

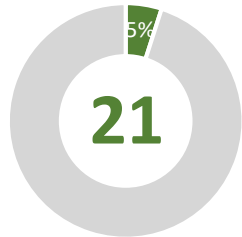
# Current Eligible Discharge Statuses

as of August 2, 2020



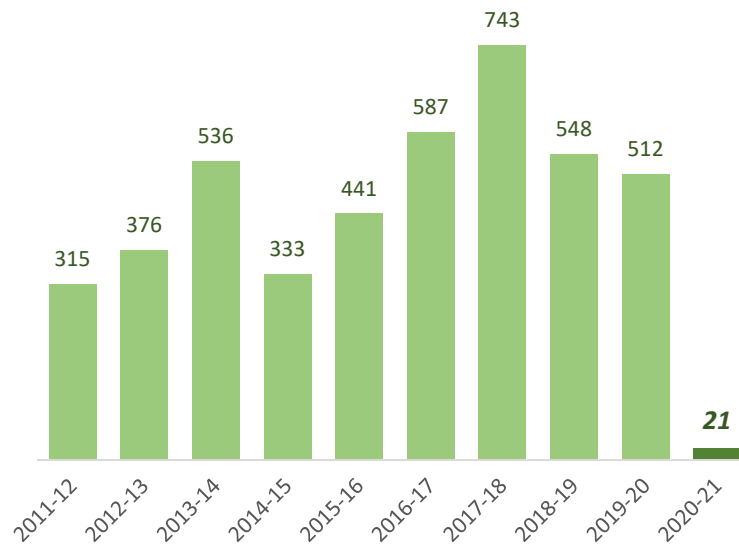
## FY 2020-21 Discharges Closed to Date

Total Closed to Date:

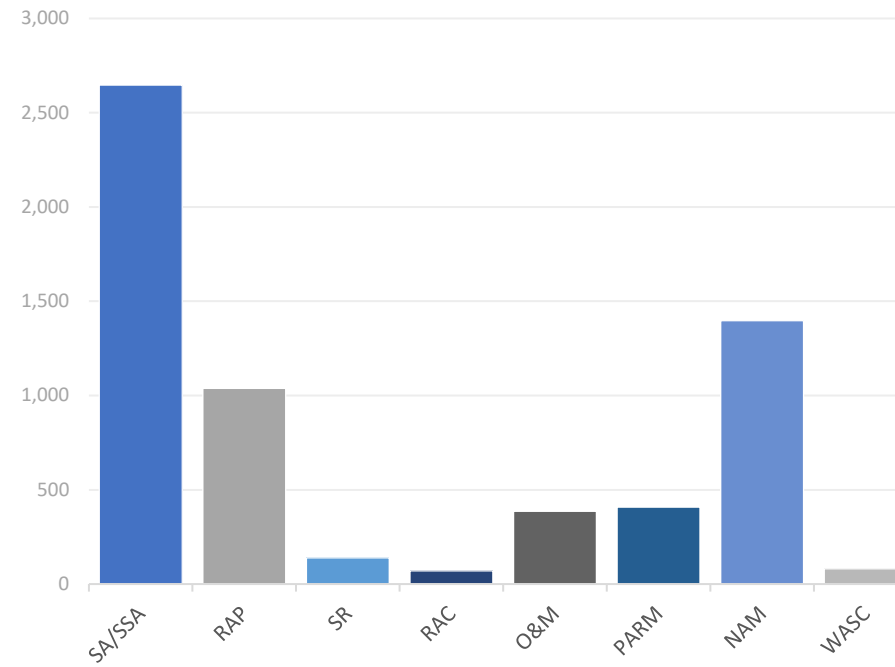


type	closures	% of total
LNFA	3	14%
NFA/SRSCO	18	86%
NFAC	0	0%
NREQ	0	0%

## Discharge Closures by Fiscal Year

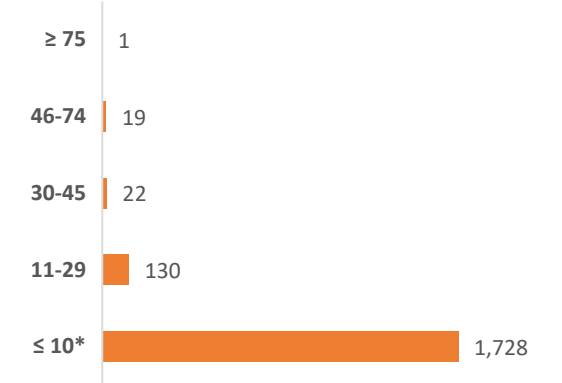


## Monthly Snapshot of Active Discharge Sub-Phases



Sub-Phase	Jul-20	Aug-20	Sep-20	Oct-20	Nov-20	Dec-20	Jan-21	Feb-21	Mar-21	Apr-21	May-21	Jun-21
Site Assessment/Supplemental (SA/SSA)	2,646											
Remedial Action Plan (RAP)	1,038											
Source Removal (SR)	139											
Remedial Action Construction (RAC)	70											
Operation & Maintenance (O&M)	386											
Post Active Remedial Monitoring (PARM)	408											
Natural Attenuation Monitoring (NAM)	1,397											
Well Abandonment/SRSCO (WASC)	81											

## Current Inactive Discharge Scores

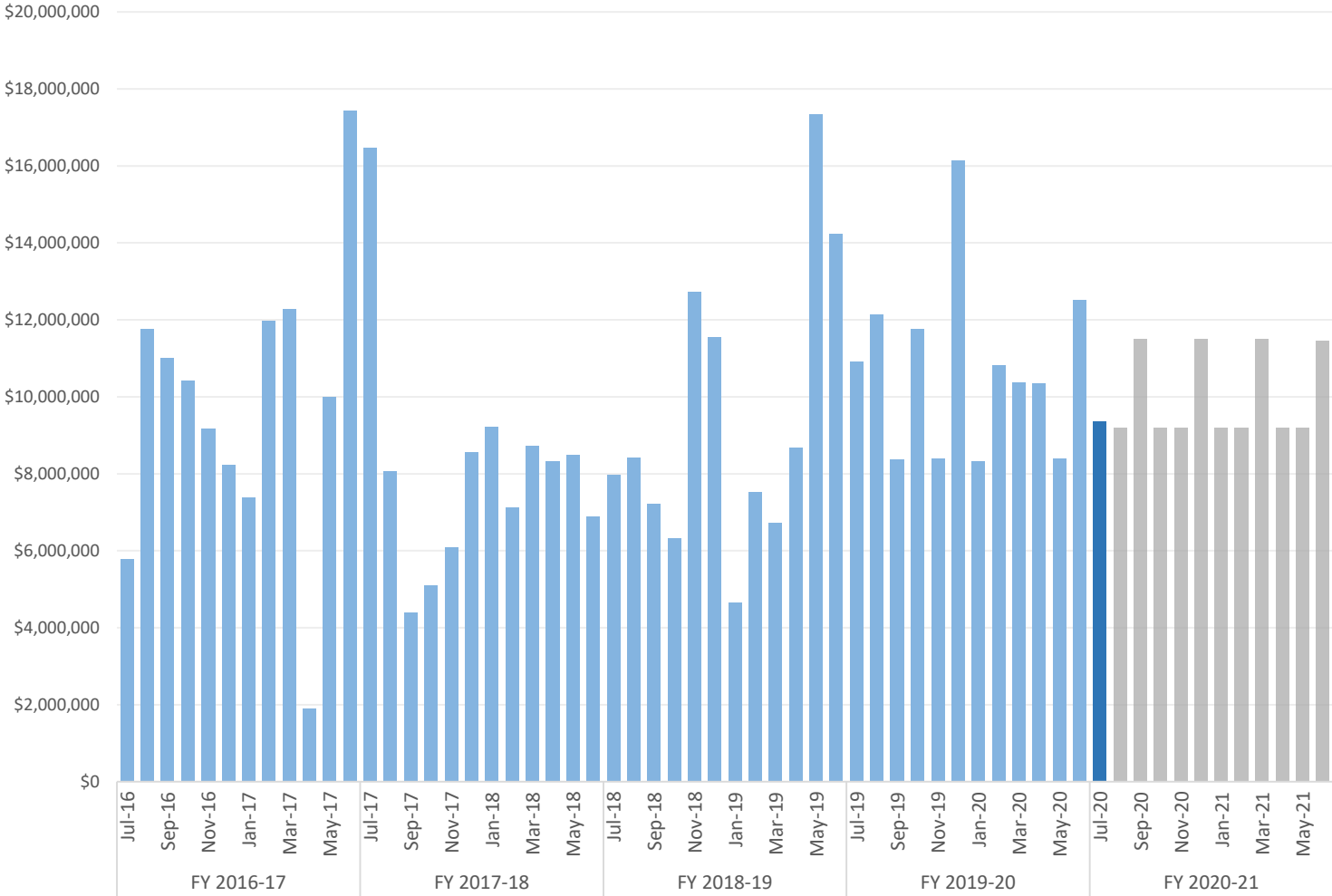


\* The current Priority Score Funding Threshold is 11.

# Encumbrances, Assignments, & Assessments

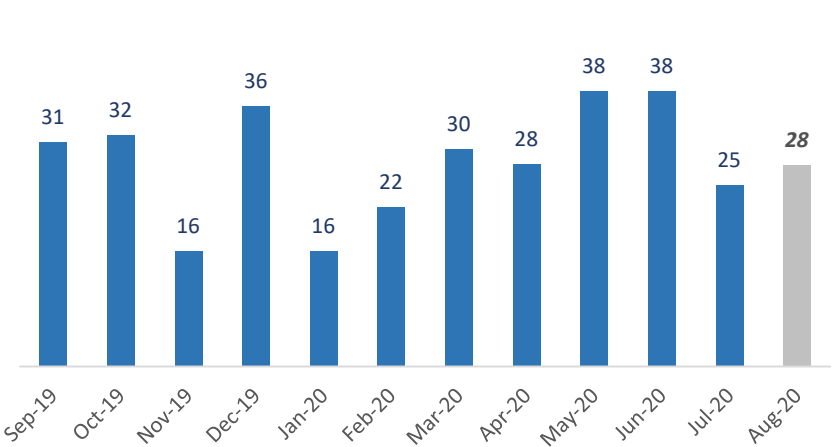
Monthly Net Encumbrance Amounts (with FY 20-21 projections)

as of July 29, 2020



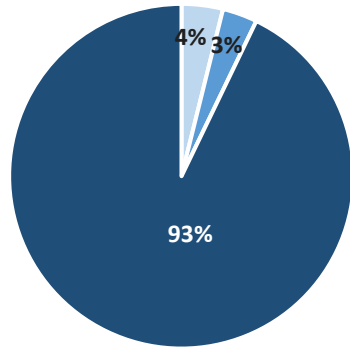
CSF Assignments by Month (with 1-month projection)

as of August 2, 2020



Current Eligible Discharge Assessment Statuses

as of August 2, 2020



Assessment Status	Discharges
Needed	313
Ongoing	264
Report Approved*	7,488

\* Does not include 11,396 completed discharges.

# Encumbrance Activity

as of July 29, 2020

## FY 2020-21 Encumbrances by Month

Month	Available Funds	FY Projection	Encumbered	*Net Encumbered	Net Percent of Projection
July 2020	\$ 10,000,000	\$ 9,200,100	\$ 11,813,915	\$ 9,359,728	102%
August 2020	\$ 10,000,000	\$ 9,200,100	-	-	0%
September 2020	\$ 10,000,000	\$ 11,490,000	-	-	0%
October 2020	\$ 10,000,000	\$ 9,200,100	-	-	0%
November 2020	\$ 10,000,000	\$ 9,200,100	-	-	0%
December 2020	\$ 10,000,000	\$ 11,490,000	-	-	0%
January 2021	\$ 10,000,000	\$ 9,200,100	-	-	0%
February 2021	\$ 10,000,000	\$ 9,200,100	-	-	0%
March 2021	\$ 10,000,000	\$ 11,490,000	-	-	0%
April 2021	\$ 10,000,000	\$ 9,200,100	-	-	0%
May 2021	\$ 10,000,000	\$ 9,200,000	-	-	0%
June 2021	\$ 9,530,701	\$ 11,460,000	-	-	0%
<b>Grand Total</b>	<b>\$ 119,530,701</b>	<b>\$ 119,530,700</b>	<b>\$ 11,813,915</b>	<b>\$ 9,359,728</b>	<b>8%</b>

## FY 2020-21 Fiscal Activity by Phase

Phase	July 2020		FY to Date	
	Count	Amount	Count	Amount
Low Score Site Initiative	25	\$ 450,879	25	\$ 450,879
Site Assessment <i>(incl. LSA)</i>	64	\$ 2,083,017	64	\$ 2,083,017
Source Removal <i>(incl. FPR)</i>	7	\$ 3,281,610	7	\$ 3,281,610
Remedial Action Plan <i>(incl. Pilot Test)</i>	26	\$ 459,515	26	\$ 459,515
Remedial Action Construction	15	\$ 1,845,506	15	\$ 1,845,506
Operation & Maintenance	26	\$ 2,849,667	26	\$ 2,849,667
Post Active Remedial Monitoring	6	\$ 121,192	6	\$ 121,192
Natural Attenuation Monitoring	43	\$ 574,905	43	\$ 574,905
Well Abandonment/SRCO	18	\$ 147,623	18	\$ 147,623
<b>Sub Total</b>	<b>230</b>	<b>\$ 11,813,915</b>	<b>230</b>	<b>\$ 11,813,915</b>

## Total Encumbered by Fiscal Year Allocation

Fiscal Year	FCO Appropriation	**Total Encumbered	Appropriation Balance
FY 2019-20 <i>(carry over)</i>	\$ 4,530,701	\$ 4,530,701	\$ 0
FY 2020-21	\$ 115,000,000	\$ 5,442,434	\$ 109,557,566

## FY 2020-21 Net Fiscal Activity

Activity	July 2020	FY to Date
Purchase/Work Orders	\$ 11,813,915	\$ 11,813,915
Change Orders & Adjustments	\$ (2,670,830)	\$ (2,670,830)
Utilities	\$ 216,643	\$ 216,643
<b>Total**</b>	<b>\$ 9,359,728</b>	<b>\$ 9,359,728</b>

\* Includes WOs, POs, COs, Utilities & Adjustments.

\*\* Monthly Net Results totals are calculated from PO/WOs sent to F&A; Total Encumbered by Fiscal Year is calculated from all encumbered in STCM.

# Current Eligible Discharge Statuses

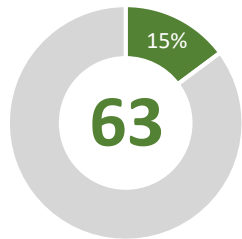
as of August 31, 2020



0% 3% 5% 8% 10% 13% 15% 18% 20% 23% 25% 28% 30% 33% 35% 38% 40% 43% 45% 48% 50% 53% 55% 58% 60% 63% 65% 68% 70% 73% 75% 78% 80% 83% 85% 88% 90% 93% 95% 98% 100%

## FY 2020-21 Discharges Closed to Date

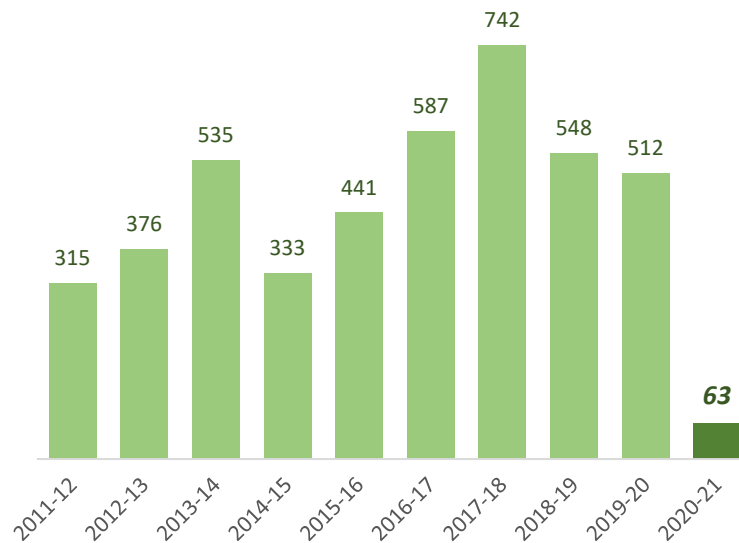
### Total Closed to Date:



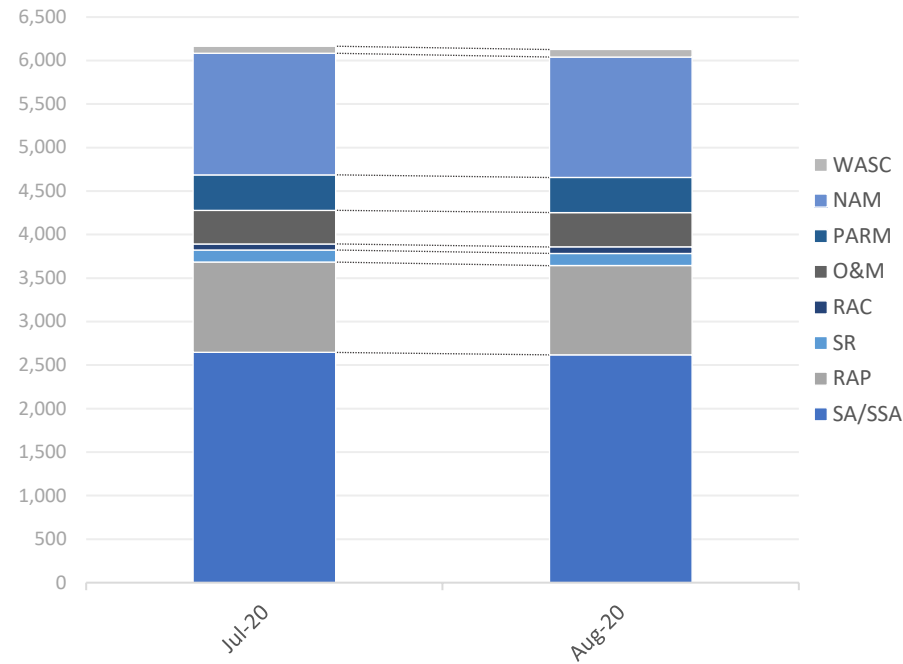
of 425  
projected closures

type	closures	% of total
LNFA	3	5%
NFA/SRSCO	59	94%
NFAC	1	2%
NREQ	0	0%

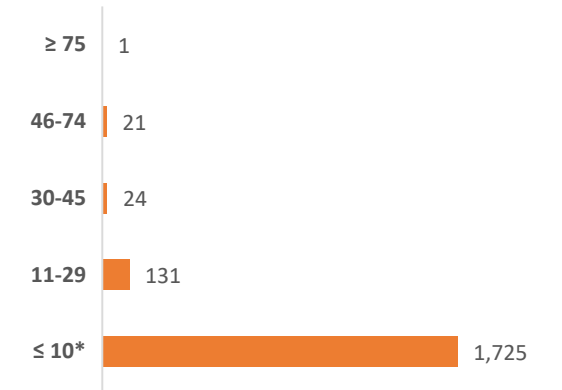
## Discharge Closures by Fiscal Year



## Monthly Snapshot of Active Discharge Sub-Phases



## Current Inactive Discharge Scores



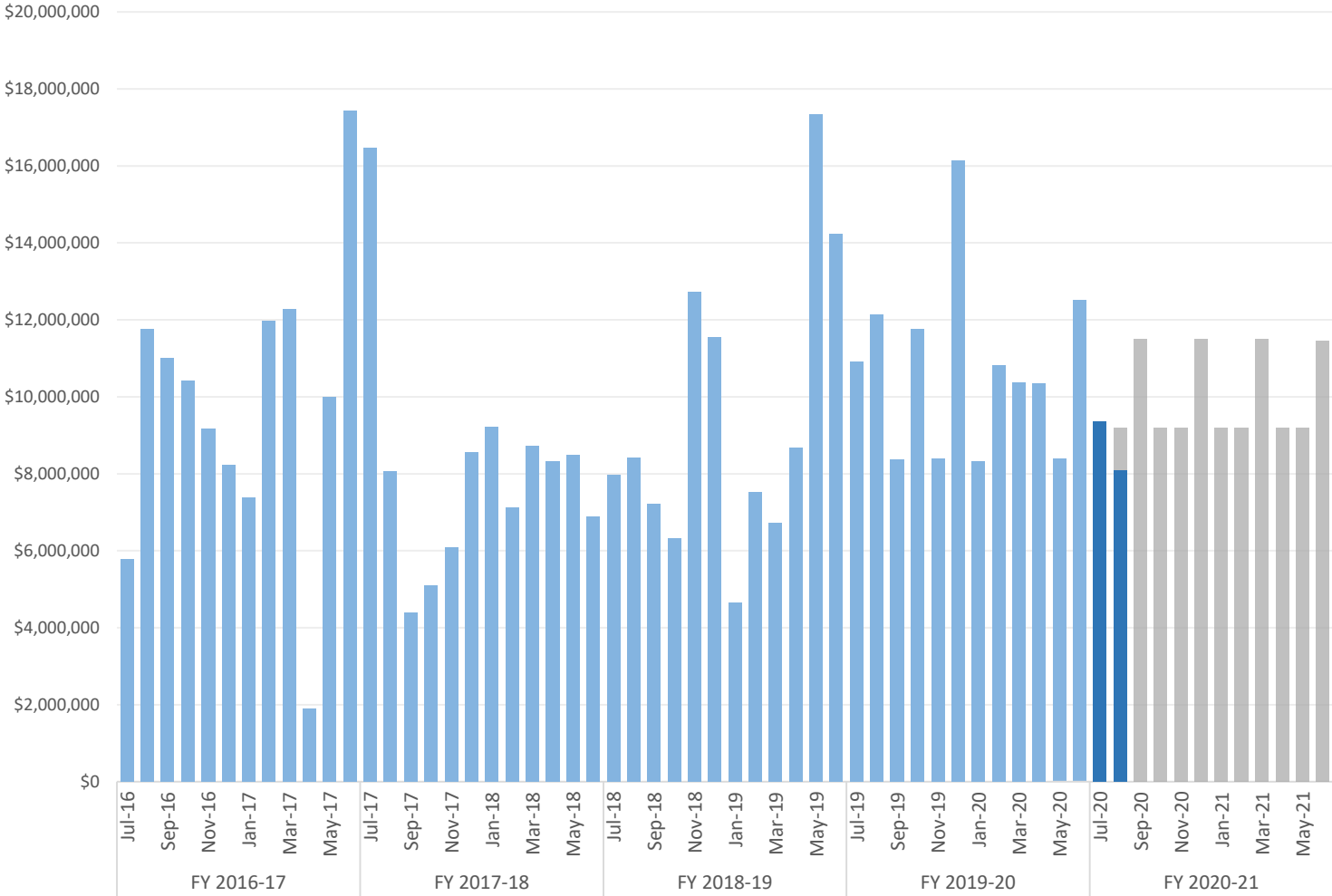
\* The current Priority Score Funding Threshold is 11.

Sub-Phase	Jul-20	Aug-20	Sep-20	Oct-20	Nov-20	Dec-20	Jan-21	Feb-21	Mar-21	Apr-21	May-21	Jun-21
Site Assessment/Supplemental (SA/SSA)	2,646	2,618										
Remedial Action Plan (RAP)	1,038	1,025										
Source Removal (SR)	139	141										
Remedial Action Construction (RAC)	70	74										
Operation & Maintenance (O&M)	386	396										
Post Active Remedial Monitoring (PARM)	408	402										
Natural Attenuation Monitoring (NAM)	1,397	1,385										
Well Abandonment/SRSCO (WASC)	81	86										

# Encumbrances, Assignments, & Assessments

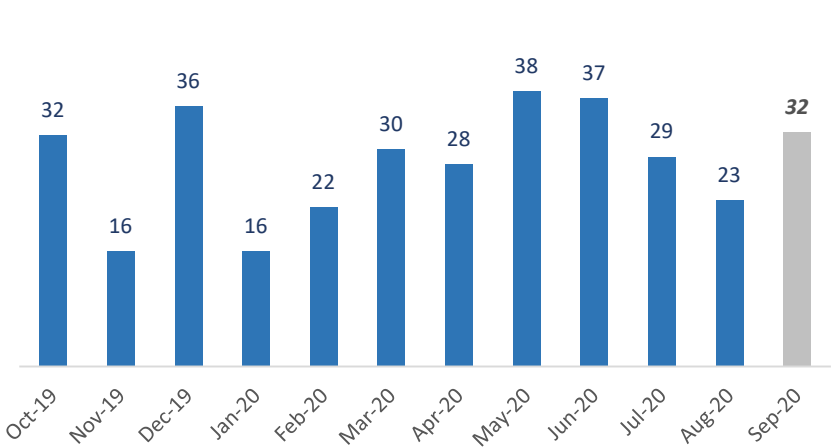
Monthly Net Encumbrance Amounts (with FY 20-21 projections)

as of August 26, 2020



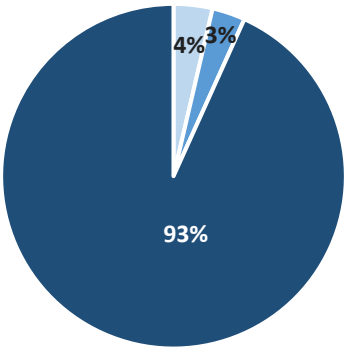
CSF Assignments by Month (with 1-month projection)

as of August 31, 2020



Current Eligible Discharge Assessment Statuses

as of August 31, 2020



Assessment Status	Discharges
Needed	293
Ongoing	249
Report Approved*	7,487

\* Does not include 11,435 completed discharges.

# Encumbrance Activity

as of August 26, 2020

## FY 2020-21 Encumbrances by Month

Month	Available Funds	FY Projection	Encumbered	*Net Encumbered	Net Percent of Projection
July 2020	\$ 10,000,000	\$ 9,200,100	\$ 11,813,915	\$ 9,359,728	102%
August 2020	\$ 10,000,000	\$ 9,200,100	\$ 10,454,498	\$ 8,079,320	88%
September 2020	\$ 10,000,000	\$ 11,490,000	-	-	0%
October 2020	\$ 10,000,000	\$ 9,200,100	-	-	0%
November 2020	\$ 10,000,000	\$ 9,200,100	-	-	0%
December 2020	\$ 10,000,000	\$ 11,490,000	-	-	0%
January 2021	\$ 10,000,000	\$ 9,200,100	-	-	0%
February 2021	\$ 10,000,000	\$ 9,200,100	-	-	0%
March 2021	\$ 10,000,000	\$ 11,490,000	-	-	0%
April 2021	\$ 10,000,000	\$ 9,200,100	-	-	0%
May 2021	\$ 10,000,000	\$ 9,200,000	-	-	0%
June 2021	\$ 9,530,701	\$ 11,460,000	-	-	0%
<b>Grand Total</b>	<b>\$ 119,530,701</b>	<b>\$ 119,530,700</b>	<b>\$ 22,268,413</b>	<b>\$ 17,439,047</b>	<b>15%</b>

## FY 2020-21 Fiscal Activity by Phase

Phase	August 2020		FY to Date	
	Count	Amount	Count	Amount
Low Score Site Initiative	31	\$ 529,103	56	\$ 979,982
Site Assessment <i>(incl. LSA)</i>	84	\$ 2,758,382	148	\$ 4,841,399
Source Removal <i>(incl. FPR)</i>	9	\$ 1,524,102	16	\$ 4,805,712
Remedial Action Plan <i>(incl. Pilot Test)</i>	34	\$ 543,301	60	\$ 1,002,816
Remedial Action Construction	19	\$ 2,466,453	34	\$ 4,311,959
Operation & Maintenance	16	\$ 1,815,533	42	\$ 4,665,200
Post Active Remedial Monitoring	7	\$ 137,925	13	\$ 259,118
Natural Attenuation Monitoring	43	\$ 543,564	86	\$ 1,118,469
Well Abandonment/SRCO	14	\$ 136,134	32	\$ 283,757
<b>Sub Total</b>	<b>257</b>	<b>\$ 10,454,498</b>	<b>487</b>	<b>\$ 22,268,413</b>

## Total Encumbered by Fiscal Year Allocation

Fiscal Year	FCO Appropriation	**Total Encumbered	Appropriation Balance
FY 2019-20 <i>(carry over)</i>	\$ 4,530,701	\$ 4,530,701	\$ 0
FY 2020-21	\$ 115,000,000	\$ 13,069,883	\$ 101,930,117

## FY 2020-21 Net Fiscal Activity

Activity	August 2020	FY to Date
Purchase/Work Orders	\$ 10,454,498	\$ 22,268,413
Change Orders & Adjustments	\$ (2,582,040)	\$ (5,252,870)
Utilities	\$ 206,862	\$ 423,505
<b>Total**</b>	<b>\$ 8,079,320</b>	<b>\$ 17,439,047</b>

\* Includes WOs, POs, COs, Utilities & Adjustments.

\*\* Monthly Net Results totals are calculated from PO/WOs sent to F&A; Total Encumbered by Fiscal Year is calculated from all encumbered in STCM.

# Current Eligible Discharge Statuses

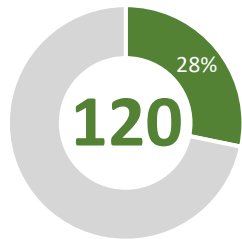
as of October 1, 2020



0% 3% 5% 8% 10% 13% 15% 18% 20% 23% 25% 28% 30% 33% 35% 38% 40% 43% 45% 48% 50% 53% 55% 58% 60% 63% 65% 68% 70% 73% 75% 78% 80% 83% 85% 88% 90% 93% 95% 98% 100%

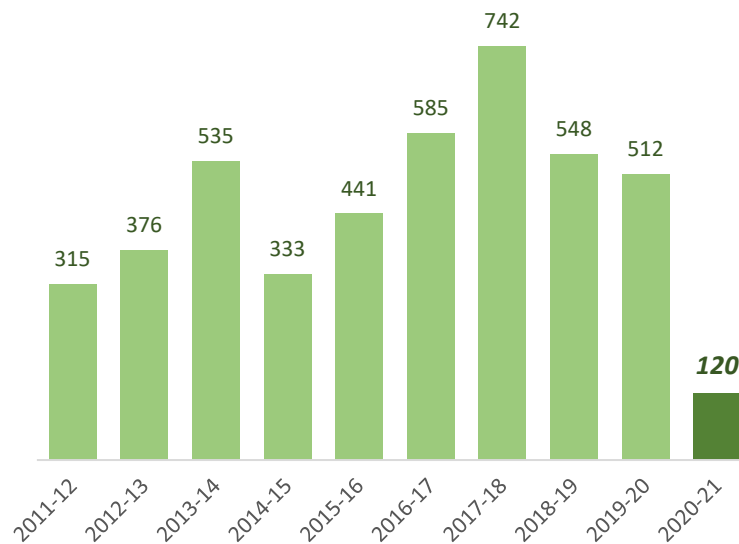
## FY 2020-21 Discharges Closed to Date

### Total Closed to Date:

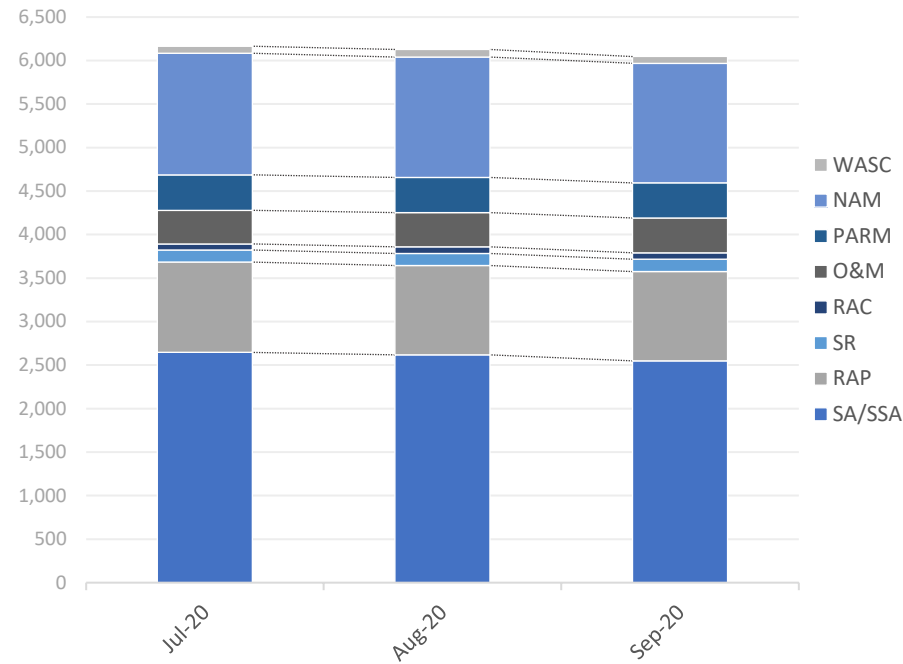


type	closures	% of total
LNFA	9	8%
NFA/SRCO	109	91%
NFAC	2	2%
NREQ	0	0%

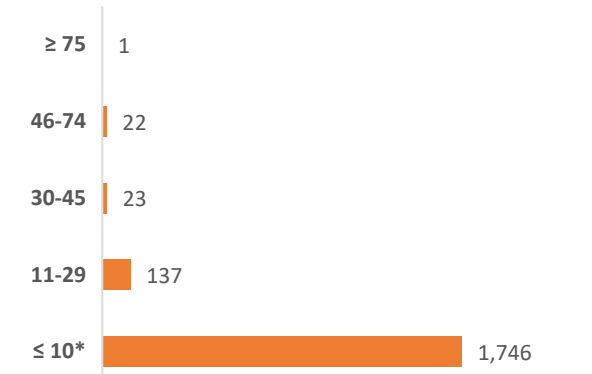
## Discharge Closures by Fiscal Year



## Monthly Snapshot of Active Discharge Sub-Phases



## Current Inactive Discharge Scores



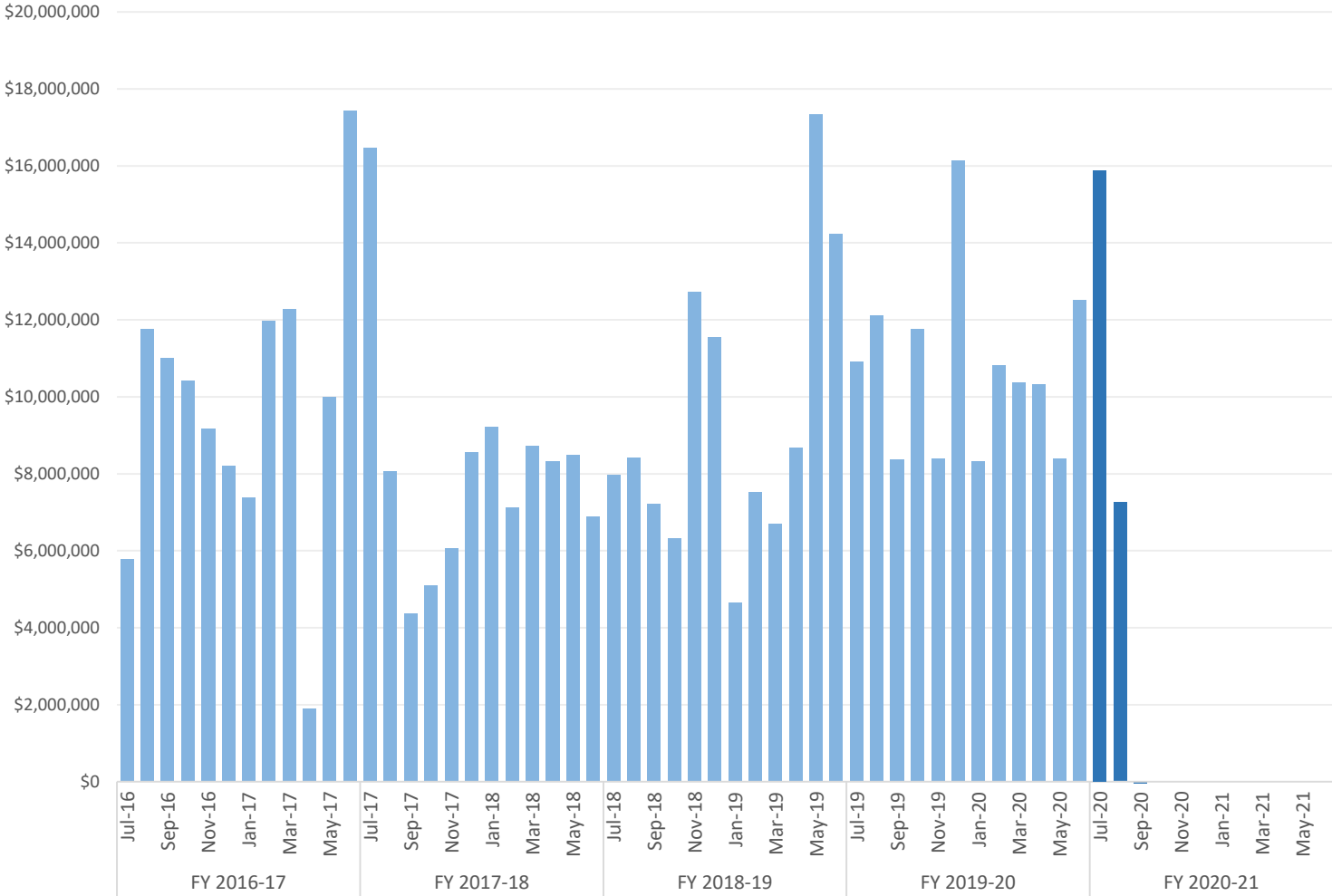
\* The current Priority Score Funding Threshold is 11.

Sub-Phase	Jul-20	Aug-20	Sep-20	Oct-20	Nov-20	Dec-20	Jan-21	Feb-21	Mar-21	Apr-21	May-21	Jun-21
Site Assessment/Supplemental (SA/SSA)	2,646	2,618	2,549									
Remedial Action Plan (RAP)	1,038	1,025	1,026									
Source Removal (SR)	139	141	142									
Remedial Action Construction (RAC)	70	74	74									
Operation & Maintenance (O&M)	386	396	400									
Post Active Remedial Monitoring (PARM)	408	402	403									
Natural Attenuation Monitoring (NAM)	1,397	1,385	1,375									
Well Abandonment/SRCO (WASC)	81	86	77									

# Encumbrances, Assignments, & Assessments

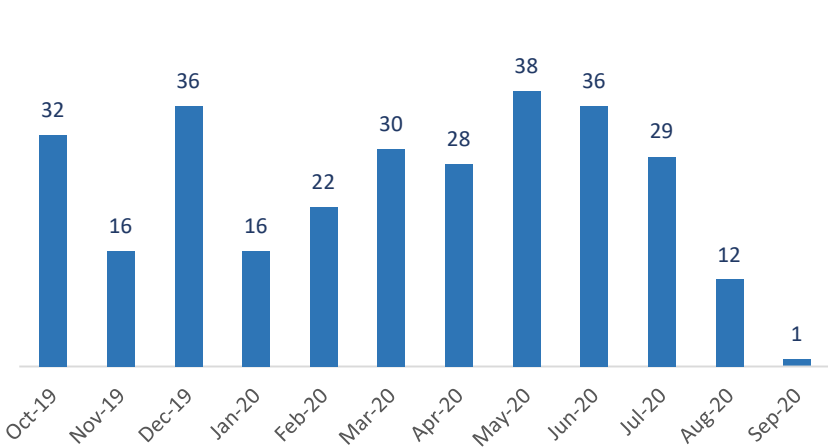
Monthly Net Encumbrance Amounts (FY 2016-17 thru present)

as of September 30, 2020



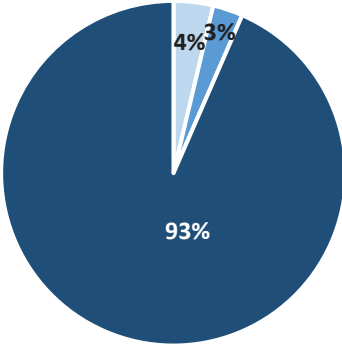
CSF Assignments by Month

as of October 1, 2020



Current Eligible Discharge Assessment Statuses

as of October 1, 2020



Assessment Status	Discharges
Needed	296
Ongoing	225
Report Approved*	7,454

\* Does not include 11,490 completed discharges.



# Encumbrance Activity

as of September 30, 2020

## FY 2020-21 Encumbrances by Month

Month	WO/PO Encumbered	*Net Encumbered
July 2020	\$ 11,813,915	\$ 15,876,605
August 2020	\$ 10,454,498	\$ 7,254,320
September 2020	\$ 2,524,065	\$ (2,970,265)
October 2020	-	-
November 2020	-	-
December 2020	-	-
January 2021	-	-
February 2021	-	-
March 2021	-	-
April 2021	-	-
May 2021	-	-
June 2021	-	-
<b>Grand Total</b>	<b>\$ 24,792,478</b>	<b>\$ 20,160,660</b>

## Total Encumbered by Fiscal Year Allocation

Fiscal Year	FCO Appropriation	**Total Encumbered	Appropriation Balance
Carry-Over	\$ 4,530,701	\$ 4,530,701	\$ 0
FY 2020-21	\$ 115,000,000	\$ 20,339,835	\$ 94,660,165

\* Includes WOs, POs, COs, Utilities & Adjustments.

\*\* Monthly Net Results totals are calculated from PO/WOs sent to F&A; Total Encumbered by Fiscal Year is calculated from all encumbered in STCM.

## FY 2020-21 Fiscal Activity by Phase

Phase	September 2020		FY to Date	
	Count	Amount	Count	Amount
Low Score Site Initiative	8	\$ 134,708	64	\$ 1,114,690
Site Assessment (incl. LSA)	0	\$ 0	148	\$ 4,841,399
Source Removal (incl. FPR)	0	\$ 0	16	\$ 4,805,712
Remedial Action Plan (incl. Pilot Test)	0	\$ 0	60	\$ 1,002,816
Remedial Action Construction	0	\$ 0	34	\$ 4,311,959
Operation & Maintenance	23	\$ 2,217,169	65	\$ 6,882,369
Post Active Remedial Monitoring	0	\$ 0	13	\$ 259,118
Natural Attenuation Monitoring	0	\$ 0	86	\$ 1,118,469
Well Abandonment/SRCO	15	\$ 172,189	47	\$ 455,946
<b>Sub Total</b>	<b>46</b>	<b>\$ 2,524,065</b>	<b>533</b>	<b>\$ 24,792,478</b>

Note: Well Abandonment includes POs for Verification for Well Abandonment. LSSI Obligations are reflected only after signed and returned from Contractor not when authorized.

## FY 2020-21 Net Fiscal Activity

Activity	September 2020	FY to Date
Purchase/Work Orders	\$ 2,524,065	\$ 24,792,478
Change Orders & Adjustments	\$ (5,735,748)	\$ (5,296,740)
Utilities	\$ 241,418	\$ 664,922
<b>Total**</b>	<b>\$ (2,970,265)</b>	<b>\$ 20,160,660</b>

# Current Eligible Discharge Statuses

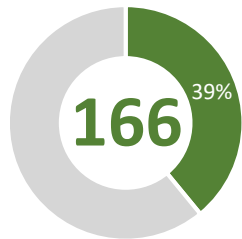
as of November 1, 2020



0% 3% 5% 8% 10% 13% 15% 18% 20% 23% 25% 28% 30% 33% 35% 38% 40% 43% 45% 48% 50% 53% 55% 58% 60% 63% 65% 68% 70% 73% 75% 78% 80% 83% 85% 88% 90% 93% 95% 98% 100%

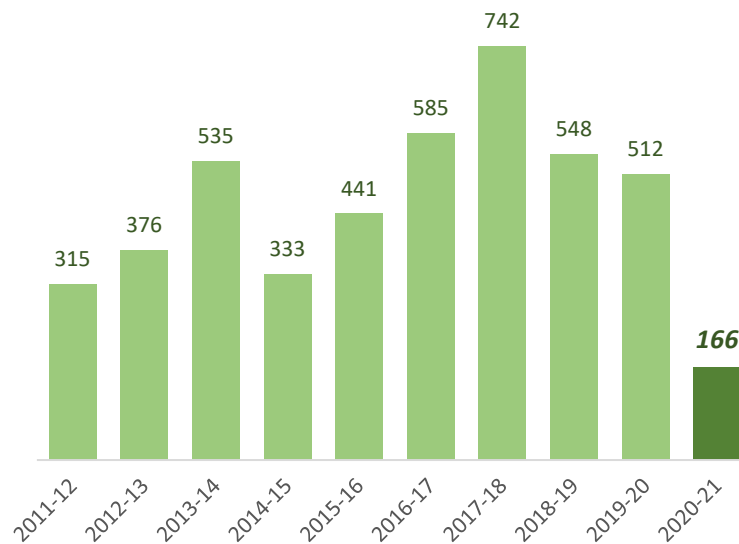
## FY 2020-21 Discharges Closed to Date

### Total Closed to Date:

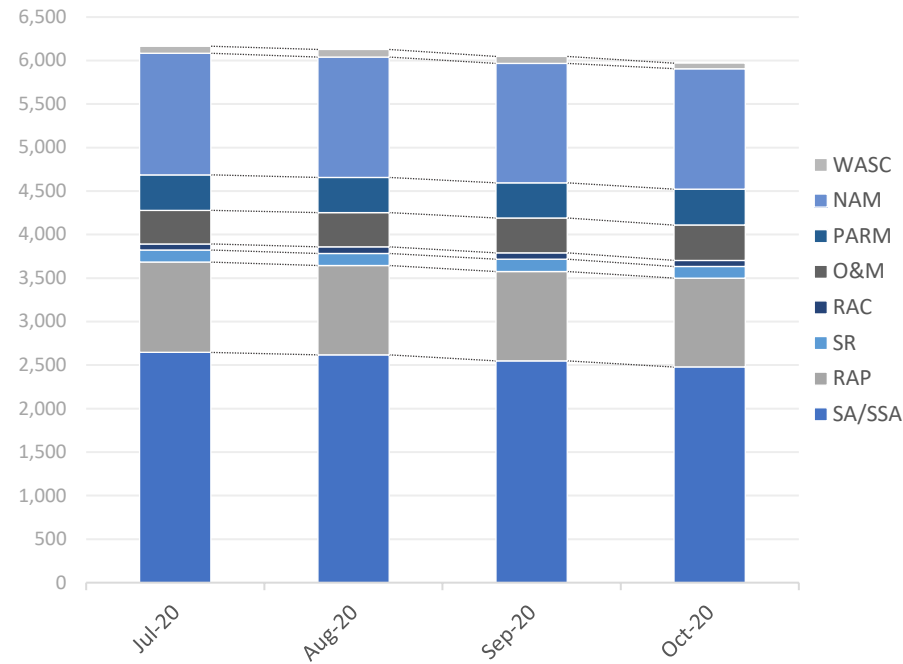


type	closures	% of total
LNFA	11	7%
NFA/SRCO	149	90%
NFAC	6	4%
NREQ	0	0%

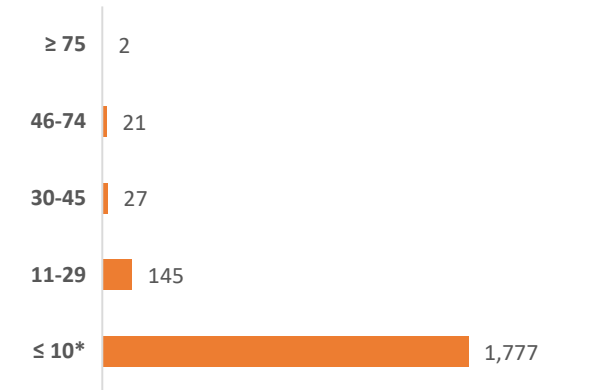
## Discharge Closures by Fiscal Year



## Monthly Snapshot of Active Discharge Sub-Phases



## Current Inactive Discharge Scores



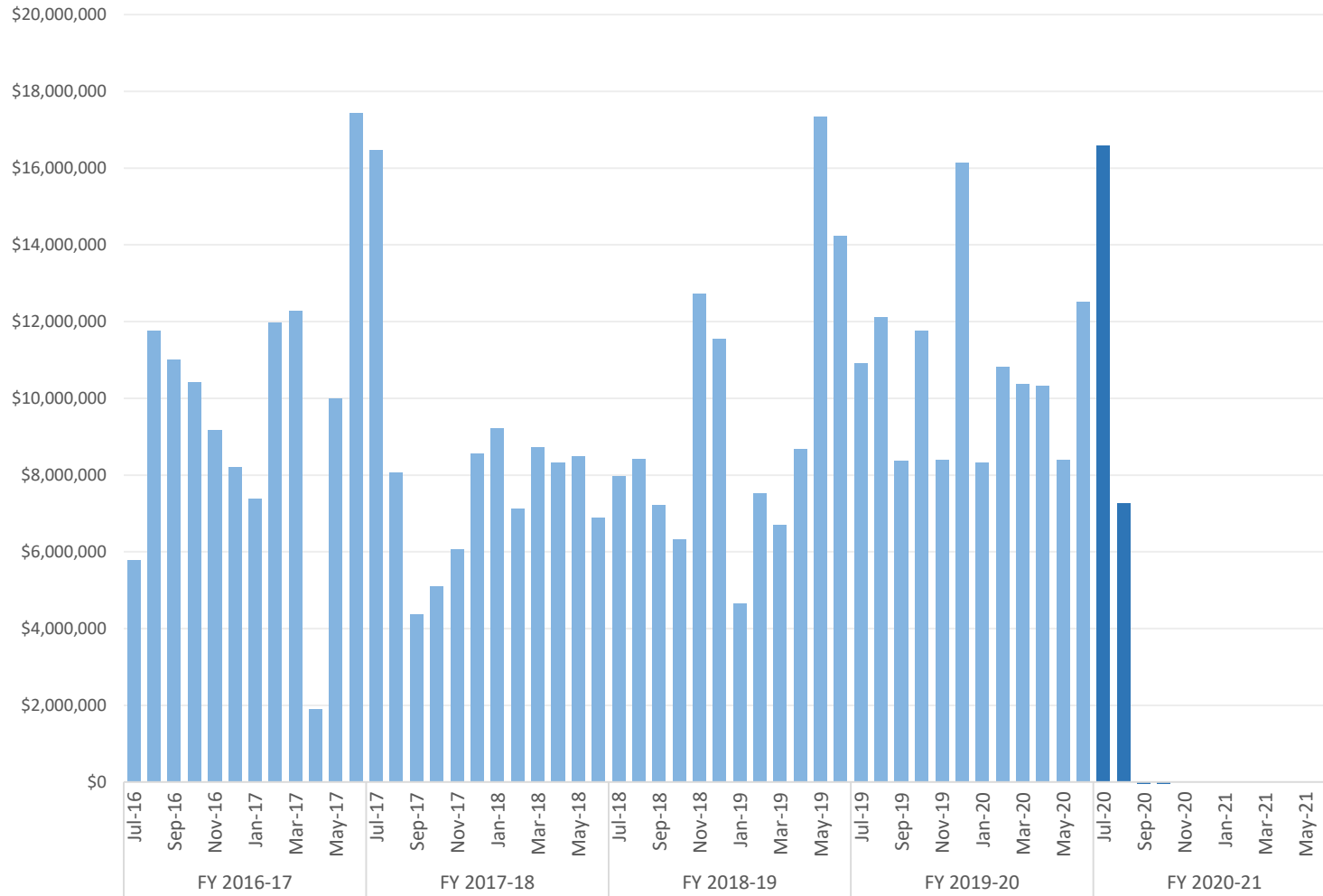
\* The current Priority Score Funding Threshold is 11.

Sub-Phase	Jul-20	Aug-20	Sep-20	Oct-20	Nov-20	Dec-20	Jan-21	Feb-21	Mar-21	Apr-21	May-21	Jun-21
Site Assessment/Supplemental (SA/SSA)	2,646	2,618	2,549	2,478								
Remedial Action Plan (RAP)	1,038	1,025	1,026	1,022								
Source Removal (SR)	139	141	142	133								
Remedial Action Construction (RAC)	70	74	74	71								
Operation & Maintenance (O&M)	386	396	400	405								
Post Active Remedial Monitoring (PARM)	408	402	403	413								
Natural Attenuation Monitoring (NAM)	1,397	1,385	1,375	1,385								
Well Abandonment/SRCO (WASC)	81	86	77	63								

# Encumbrances, Assignments, & Assessments

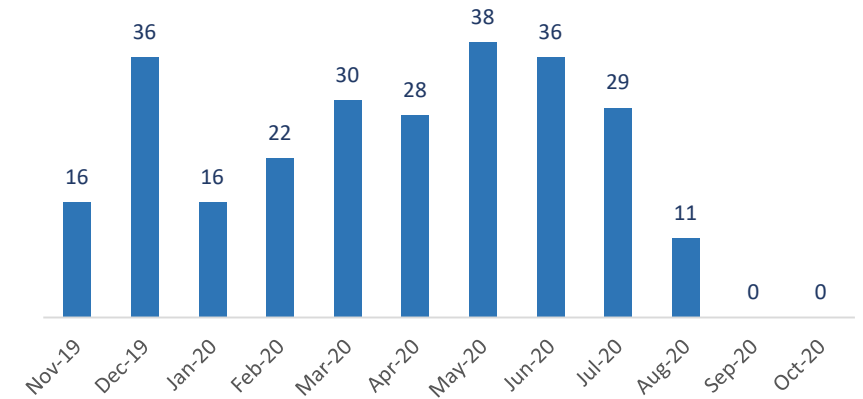
## Monthly Net Encumbrance Amounts (FY 2016-17 thru present)

as of October 28, 2020



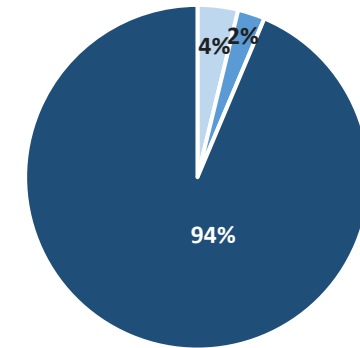
## CSF Assignments by Month

as of November 1, 2020



## Current Eligible Discharge Assessment Statuses

as of November 1, 2020



Assessment Status	Discharges
Needed	302
Ongoing	202
Report Approved*	7,438

\* Does not include 11,536 completed discharges.

# Encumbrance Activity

as of October 28, 2020

## FY 2020-21 Encumbrances by Month

Month	WO/PO Encumbered	*Net Encumbered
July 2020	\$ 11,813,915	\$ 16,594,721
August 2020	\$ 10,454,498	\$ 7,254,320
September 2020	\$ 2,524,065	\$ (2,970,265)
October 2020	\$ 3,099,629	\$ (6,178,012)
November 2020	-	-
December 2020	-	-
January 2021	-	-
February 2021	-	-
March 2021	-	-
April 2021	-	-
May 2021	-	-
June 2021	-	-
<b>Grand Total</b>	<b>\$ 27,892,106</b>	<b>\$ 14,700,764</b>

## Total Encumbered by Fiscal Year Allocation

Fiscal Year	FCO Appropriation	**Total Encumbered	Appropriation Balance
Carry-Over	\$ 4,530,701	\$ 4,530,701	\$ 0
FY 2020-21	\$ 115,000,000	\$ 14,227,014	\$ 100,772,986

\* Includes WOs, POs, COs, Utilities & Adjustments.

\*\* Monthly Net Results totals are calculated from PO/WOs sent to F&A; Total Encumbered by Fiscal Year is calculated from all encumbered in STCM.

## FY 2020-21 Fiscal Activity by Phase

Phase	October 2020		FY to Date	
	Count	Amount	Count	Amount
Low Score Site Initiative	15	\$ 47,928	79	\$ 1,162,619
Site Assessment (incl. LSA)	0	\$ 0	148	\$ 4,841,399
Source Removal (incl. FPR)	0	\$ 0	16	\$ 4,805,712
Remedial Action Plan (incl. Pilot Test)	0	\$ 0	60	\$ 1,002,816
Remedial Action Construction	0	\$ 0	34	\$ 4,311,959
Operation & Maintenance	35	\$ 2,807,857	100	\$ 9,690,226
Post Active Remedial Monitoring	0	\$ 0	13	\$ 259,118
Natural Attenuation Monitoring	0	\$ 0	86	\$ 1,118,469
Well Abandonment/SRCO	28	\$ 243,843	75	\$ 699,789
<b>Sub Total</b>	<b>78</b>	<b>\$ 3,099,629</b>	<b>611</b>	<b>\$ 27,892,106</b>

Note: Well Abandonment includes POs for Verification for Well Abandonment. LSSI Obligations are reflected only after signed and returned from Contractor not when authorized.

## FY 2020-21 Net Fiscal Activity

Activity	October 2020	FY to Date
Purchase/Work Orders	\$ 3,099,629	\$ 27,892,106
Change Orders & Adjustments	\$ (9,473,322)	\$ (14,051,947)
Utilities	\$ 195,682	\$ 860,604
<b>Total**</b>	<b>\$ (6,178,012)</b>	<b>\$ 14,700,764</b>

# Current Eligible Discharge Statuses

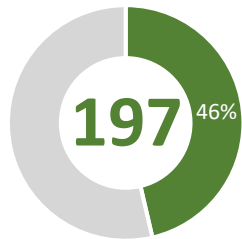
as of November 30, 2020



0% 3% 5% 8% 10% 13% 15% 18% 20% 23% 25% 28% 30% 33% 35% 38% 40% 43% 45% 48% 50% 53% 55% 58% 60% 63% 65% 68% 70% 73% 75% 78% 80% 83% 85% 88% 90% 93% 95% 98% 100%

## FY 2020-21 Discharges Closed to Date

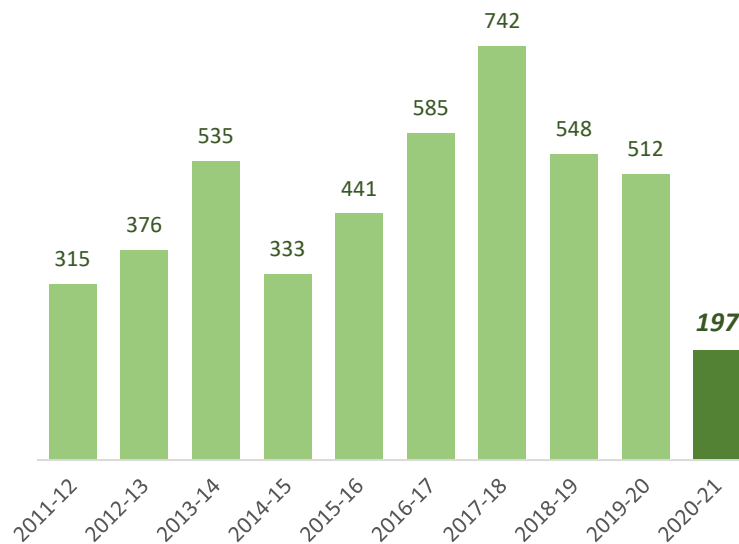
### Total Closed to Date:



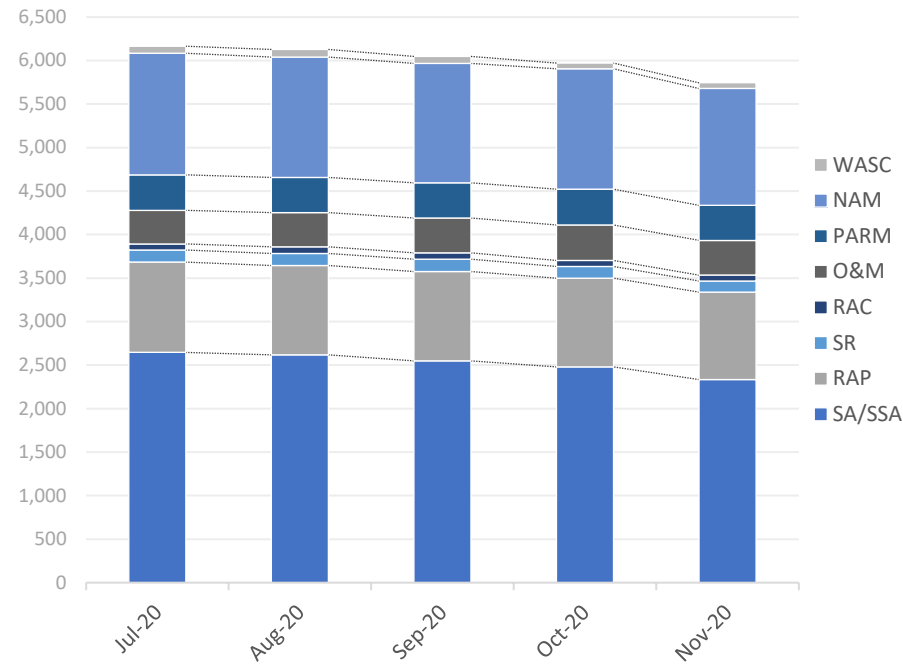
of 425  
projected closures

type	closures	% of total
LNFA	11	6%
NFA/SRCO	179	91%
NFAC	7	4%
NREQ	0	0%

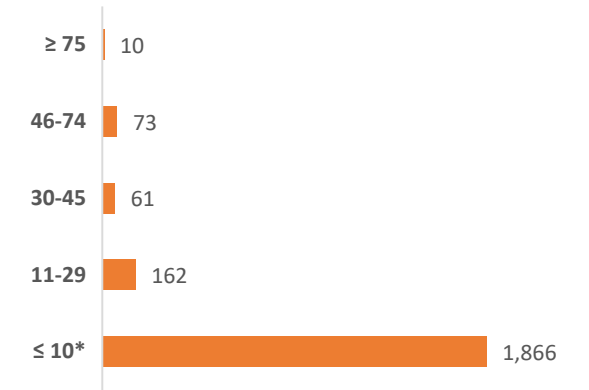
## Discharge Closures by Fiscal Year



## Monthly Snapshot of Active Discharge Sub-Phases



## Current Inactive Discharge Scores



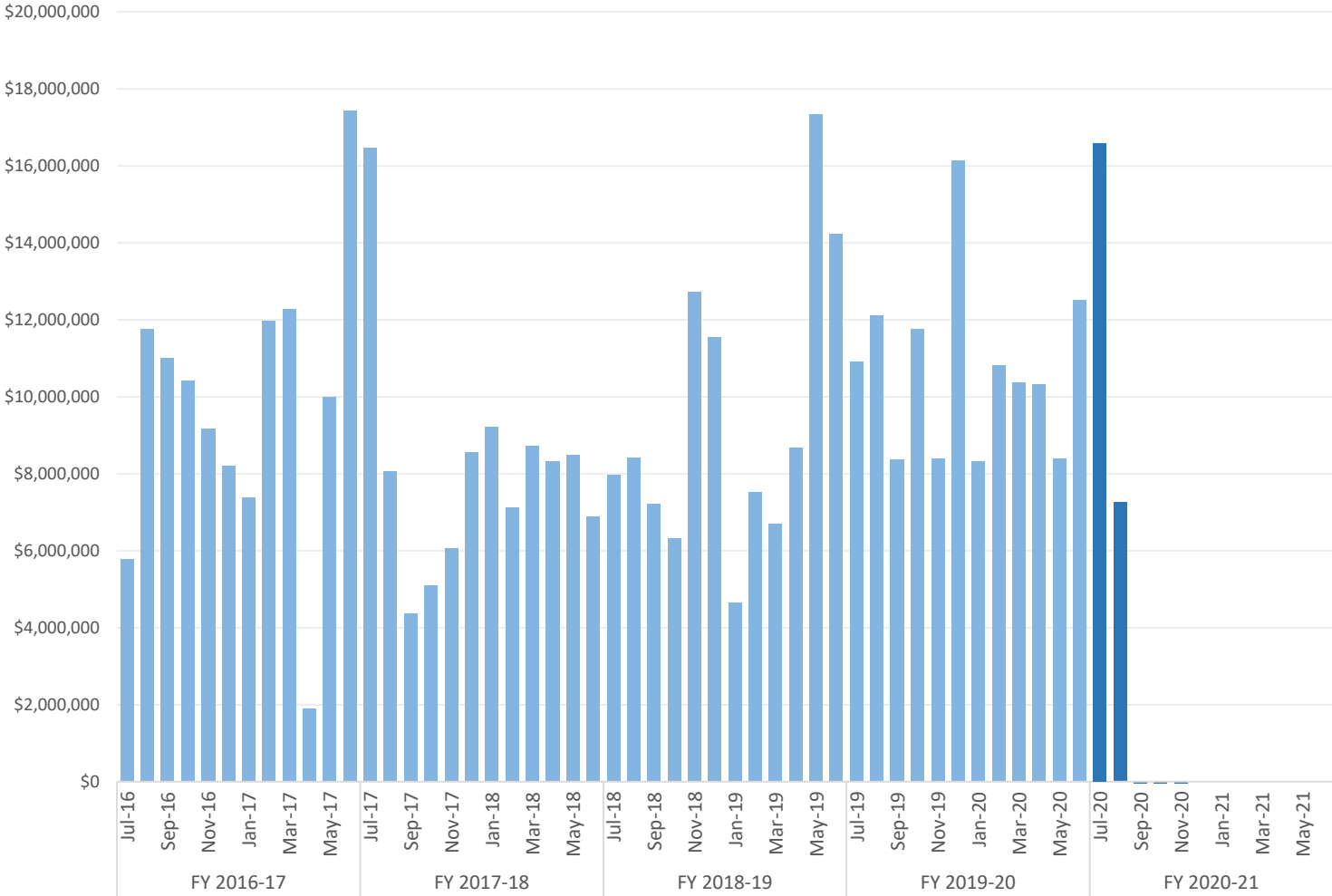
\* The current Priority Score Funding Threshold is 11.

Sub-Phase	Jul-20	Aug-20	Sep-20	Oct-20	Nov-20	Dec-20	Jan-21	Feb-21	Mar-21	Apr-21	May-21	Jun-21
Site Assessment/Supplemental (SA/SSA)	2,646	2,618	2,549	2,478	2,334							
Remedial Action Plan (RAP)	1,038	1,025	1,026	1,022	1,005							
Source Removal (SR)	139	141	142	133	128							
Remedial Action Construction (RAC)	70	74	74	71	67							
Operation & Maintenance (O&M)	386	396	400	405	400							
Post Active Remedial Monitoring (PARM)	408	402	403	413	402							
Natural Attenuation Monitoring (NAM)	1,397	1,385	1,375	1,385	1,343							
Well Abandonment/SRCO (WASC)	81	86	77	63	65							

# Encumbrances, Assignments, & Assessments

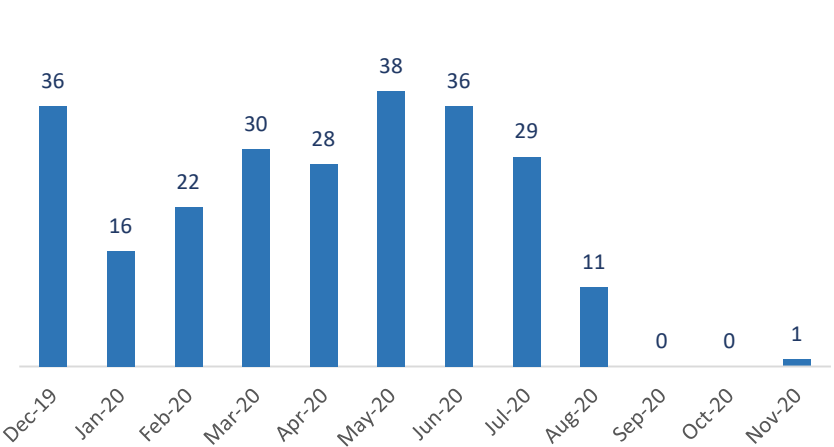
Monthly Net Encumbrance Amounts (FY 2016-17 thru present)

as of November 25, 2020



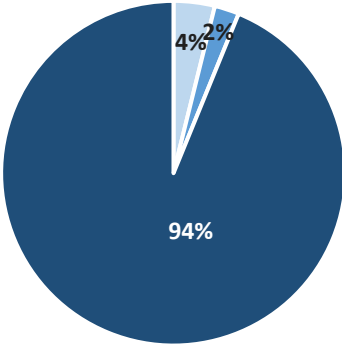
CSF Assignments by Month

as of November 30, 2020



Current Eligible Discharge Assessment Statuses

as of November 30, 2020



Assessment Status	Discharges
Needed	306
Ongoing	183
Report Approved*	7,427

\* Does not include 11,567 completed discharges.

# Encumbrance Activity

as of November 25, 2020

## FY 2020-21 Encumbrances by Month

Month	WO/PO Encumbered	*Net Encumbered
July 2020	\$ 11,813,915	\$ 16,594,721
August 2020	\$ 10,454,498	\$ 7,254,320
September 2020	\$ 2,524,065	\$ (2,970,265)
October 2020	\$ 3,099,629	\$ (6,178,012)
November 2020	\$ 1,867,006	\$ (817,684)
December 2020	-	-
January 2021	-	-
February 2021	-	-
March 2021	-	-
April 2021	-	-
May 2021	-	-
June 2021	-	-
<b>Grand Total</b>	<b>\$ 29,759,112</b>	<b>\$ 13,883,080</b>

## Total Encumbered by Fiscal Year Allocation

Fiscal Year	FCO Appropriation	**Total Encumbered	Appropriation Balance
Carry-Over	\$ 4,530,701	\$ 4,530,701	\$ 0
FY 2020-21	\$ 115,000,000	\$ 12,852,956	\$ 102,147,044

\* Includes WOs, POs, COs, Utilities & Adjustments.

\*\* Monthly Net Results totals are calculated from PO/WOs sent to F&A; Total Encumbered by Fiscal Year is calculated from all encumbered in STCM.

## FY 2020-21 Fiscal Activity by Phase

Phase	November 2020		FY to Date	
	Count	Amount	Count	Amount
Low Score Site Initiative	19	\$ 57,133	98	\$ 1,219,752
Site Assessment (incl. LSA)	0	\$ 0	148	\$ 4,841,399
Source Removal (incl. FPR)	1	\$ 43,309	17	\$ 4,849,021
Remedial Action Plan (incl. Pilot Test)	0	\$ 0	60	\$ 1,002,816
Remedial Action Construction	0	\$ 0	34	\$ 4,311,959
Operation & Maintenance	23	\$ 1,703,722	123	\$ 11,393,948
Post Active Remedial Monitoring	0	\$ 0	13	\$ 259,118
Natural Attenuation Monitoring	0	\$ 0	86	\$ 1,118,469
Well Abandonment/SRCO	12	\$ 62,842	87	\$ 762,631
<b>Sub Total</b>	<b>55</b>	<b>\$ 1,867,006</b>	<b>666</b>	<b>\$ 29,759,112</b>

Note: Well Abandonment includes POs for Verification for Well Abandonment. LSSI Obligations are reflected only after signed and returned from Contractor not when authorized.

## FY 2020-21 Net Fiscal Activity

Activity	November 2020	FY to Date
Purchase/Work Orders	\$ 1,867,006	\$ 29,759,112
Change Orders & Adjustments	\$ (2,970,050)	\$ (17,021,997)
Utilities	\$ 285,361	\$ 1,145,965
<b>Total**</b>	<b>\$ (817,684)</b>	<b>\$ 13,883,080</b>

# Current Eligible Discharge Statuses

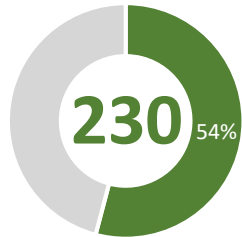
as of January 3, 2021



0% 3% 5% 8% 10% 13% 15% 18% 20% 23% 25% 28% 30% 33% 35% 38% 40% 43% 45% 48% 50% 53% 55% 58% 60% 63% 65% 68% 70% 73% 75% 78% 80% 83% 85% 88% 90% 93% 95% 98% 100%

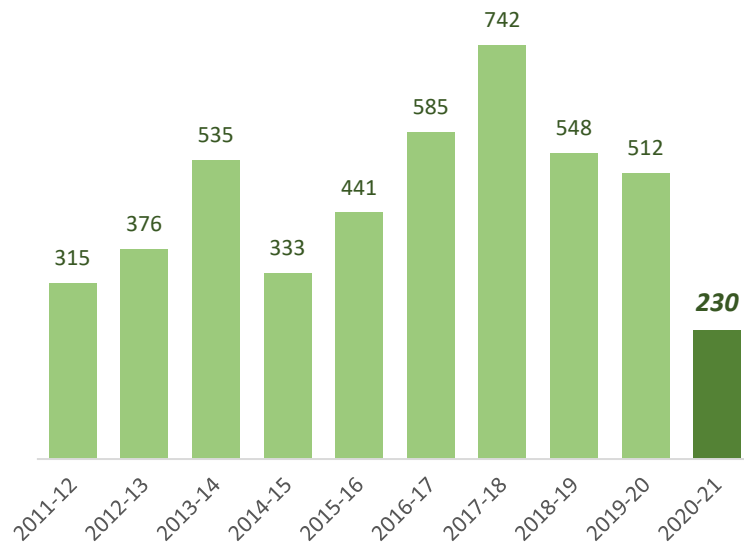
## FY 2020-21 Discharges Closed to Date

### Total Closed to Date:

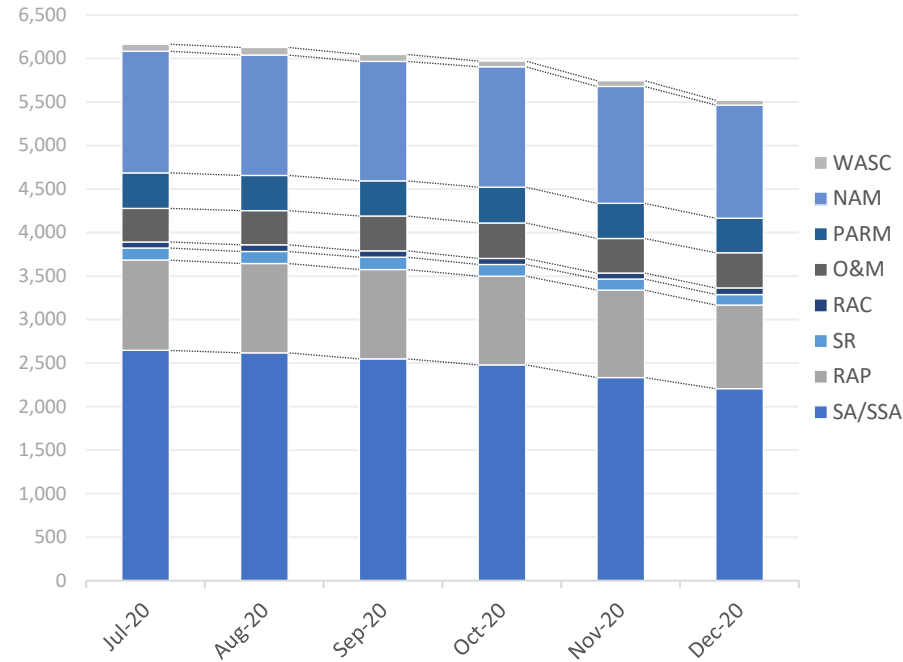


type	closures	% of total
LNFA	13	6%
NFA/SRSCO	209	91%
NFAC	8	3%
NREQ	0	0%

## Discharge Closures by Fiscal Year

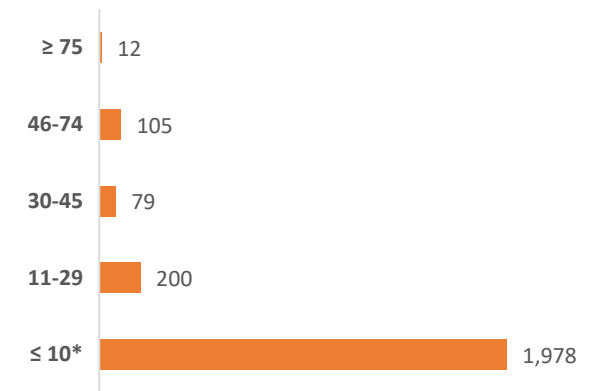


## Monthly Snapshot of Active Discharge Sub-Phases



Sub-Phase	Jul-20	Aug-20	Sep-20	Oct-20	Nov-20	Dec-20	Jan-21	Feb-21	Mar-21	Apr-21	May-21	Jun-21
Site Assessment/Supplemental (SA/SSA)	2,646	2,618	2,549	2,478	2,334	2,206						
Remedial Action Plan (RAP)	1,038	1,025	1,026	1,022	1,005	961						
Source Removal (SR)	139	141	142	133	128	122						
Remedial Action Construction (RAC)	70	74	74	71	67	74						
Operation & Maintenance (O&M)	386	396	400	405	400	405						
Post Active Remedial Monitoring (PARM)	408	402	403	413	402	397						
Natural Attenuation Monitoring (NAM)	1,397	1,385	1,375	1,385	1,343	1,301						
Well Abandonment/SRSCO (WASC)	81	86	77	63	65	55						

## Current Inactive Discharge Scores



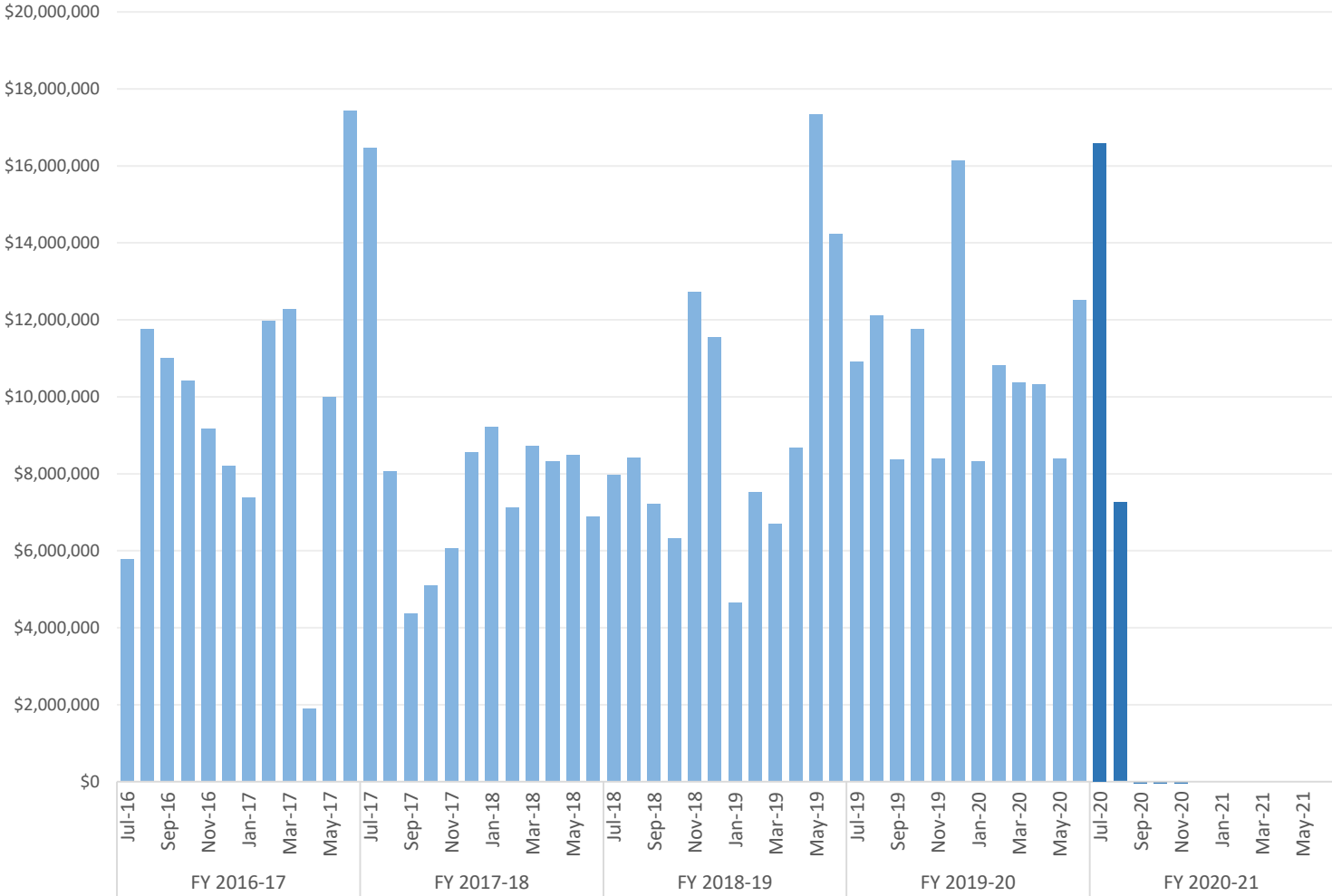
\* The current Priority Score Funding Threshold is 11.



# Encumbrances, Assignments, & Assessments

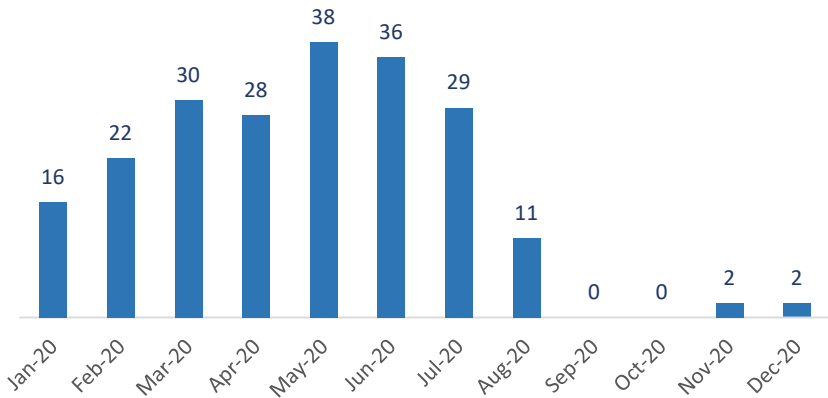
Monthly Net Encumbrance Amounts (FY 2016-17 thru present)

as of December 30, 2020



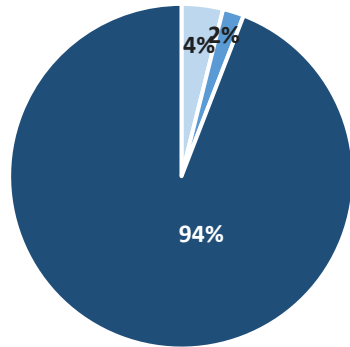
CSF Assignments by Month

as of January 3, 2021



Current Eligible Discharge Assessment Statuses

as of January 3, 2021



Assessment Status	Discharges
Needed	307
Ongoing	157
Report Approved*	7,431

\* Does not include 11,598 completed discharges.

# Encumbrance Activity

as of December 30, 2020

## FY 2020-21 Encumbrances by Month

Month	WO/PO Encumbered	*Net Encumbered
July 2020	\$ 11,813,915	\$ 16,594,721
August 2020	\$ 10,454,498	\$ 7,254,320
September 2020	\$ 2,524,065	\$ (2,970,265)
October 2020	\$ 3,099,629	\$ (6,178,012)
November 2020	\$ 1,867,006	\$ (817,684)
December 2020	\$ 3,072,783	\$ 26,783
January 2021	-	-
February 2021	-	-
March 2021	-	-
April 2021	-	-
May 2021	-	-
June 2021	-	-
<b>Grand Total</b>	<b>\$ 32,831,895</b>	<b>\$ 13,909,864</b>

## Total Encumbered by Fiscal Year Allocation

Fiscal Year	FCO Appropriation	**Total Encumbered	Appropriation Balance
Carry-Over	\$ 4,530,701	\$ 4,530,701	\$ 0
FY 2020-21	\$ 115,000,000	\$ 13,155,002	\$ 101,844,998

\* Includes WOs, POs, COs, Utilities & Adjustments.

\*\* Monthly Net Results totals are calculated from PO/WOs sent to F&A; Total Encumbered by Fiscal Year is calculated from all encumbered in STCM.

## FY 2020-21 Fiscal Activity by Phase

Phase	December 2020		FY to Date	
	Count	Amount	Count	Amount
Low Score Site Initiative	9	\$ 38,569	107	\$ 1,258,320
Site Assessment (incl. LSA)	0	\$ 0	148	\$ 4,841,399
Source Removal (incl. FPR)	0	\$ 0	17	\$ 4,849,021
Remedial Action Plan (incl. Pilot Test)	58	\$ 492,246	118	\$ 1,495,063
Remedial Action Construction	0	\$ 0	34	\$ 4,311,959
Operation & Maintenance	34	\$ 2,061,149	157	\$ 13,455,096
Post Active Remedial Monitoring	38	\$ 348,185	51	\$ 607,303
Natural Attenuation Monitoring	0	\$ 0	86	\$ 1,118,469
Well Abandonment/SRCO	17	\$ 132,634	104	\$ 895,265
<b>Sub Total</b>	<b>156</b>	<b>\$ 3,072,783</b>	<b>822</b>	<b>\$ 32,831,895</b>

Note: Well Abandonment includes POs for Verification for Well Abandonment. LSSI Obligations are reflected only after signed and returned from Contractor and include costs for Well Abandonment Activities under LSSI Cleanup.

## FY 2020-21 Net Fiscal Activity

Activity	December 2020	FY to Date
Purchase/Work Orders	\$ 3,072,783	\$ 32,831,895
Change Orders & Adjustments	\$ (3,321,446)	\$ (20,343,443)
Utilities	\$ 275,447	\$ 1,421,411
<b>Total**</b>	<b>\$ 26,783</b>	<b>\$ 13,909,864</b>

# Current Eligible Discharge Statuses

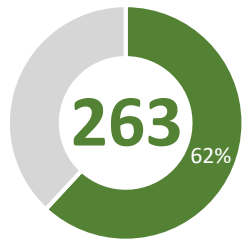
as of January 31, 2021



0% 3% 5% 8% 10% 13% 15% 18% 20% 23% 25% 28% 30% 33% 35% 38% 40% 43% 45% 48% 50% 53% 55% 58% 60% 63% 65% 68% 70% 73% 75% 78% 80% 83% 85% 88% 90% 93% 95% 98% 100%

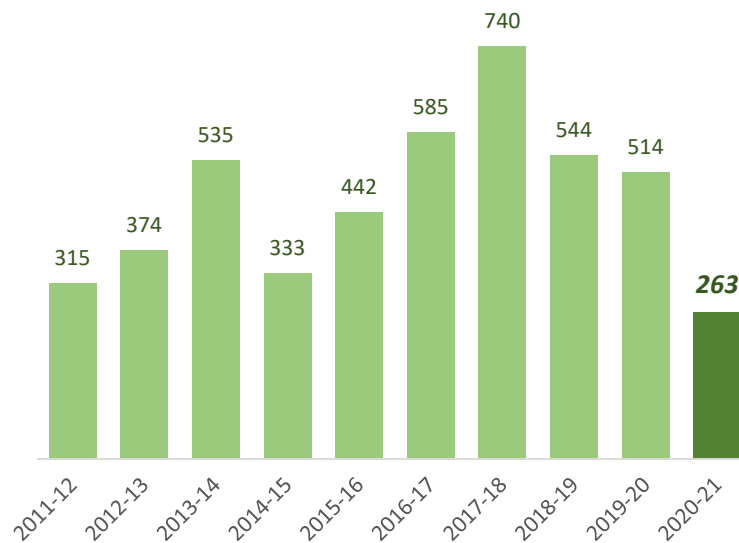
## FY 2020-21 Discharges Closed to Date

### Total Closed to Date:

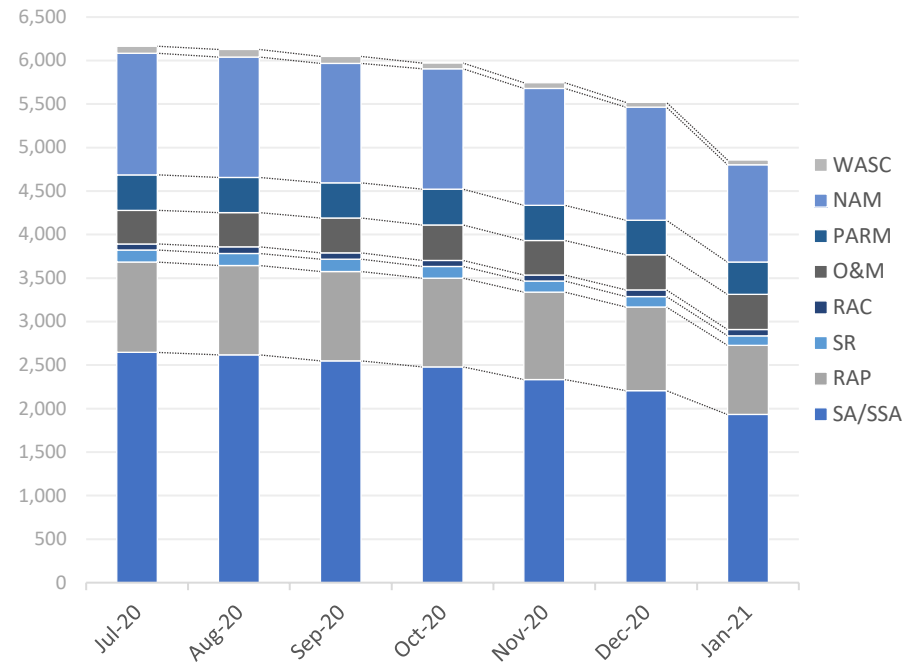


type	closures	% of total
LNFA	15	6%
NFA/SRCO	240	91%
NFAC	8	3%
NREQ	0	0%

## Discharge Closures by Fiscal Year

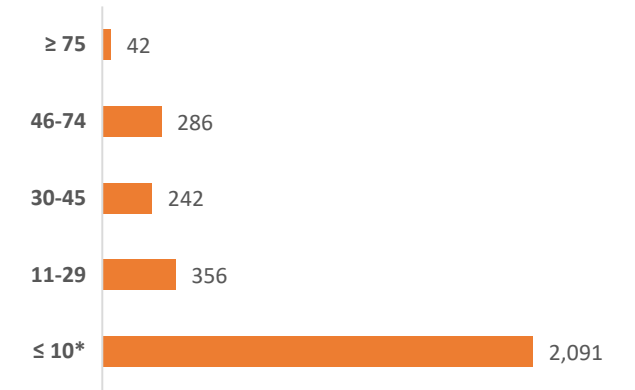


## Monthly Snapshot of Active Discharge Sub-Phases



Sub-Phase	Jul-20	Aug-20	Sep-20	Oct-20	Nov-20	Dec-20	Jan-21	Feb-21	Mar-21	Apr-21	May-21	Jun-21
Site Assessment/Supplemental (SA/SSA)	2,646	2,618	2,549	2,478	2,334	2,206	1,932					
Remedial Action Plan (RAP)	1,038	1,025	1,026	1,022	1,005	961	795					
Source Removal (SR)	139	141	142	133	128	122	110					
Remedial Action Construction (RAC)	70	74	74	71	67	74	72					
Operation & Maintenance (O&M)	386	396	400	405	400	405	403					
Post Active Remedial Monitoring (PARM)	408	402	403	413	402	397	371					
Natural Attenuation Monitoring (NAM)	1,397	1,385	1,375	1,385	1,343	1,301	1,119					
Well Abandonment/SRCO (WASC)	81	86	77	63	65	55	55					

## Current Inactive Discharge Scores

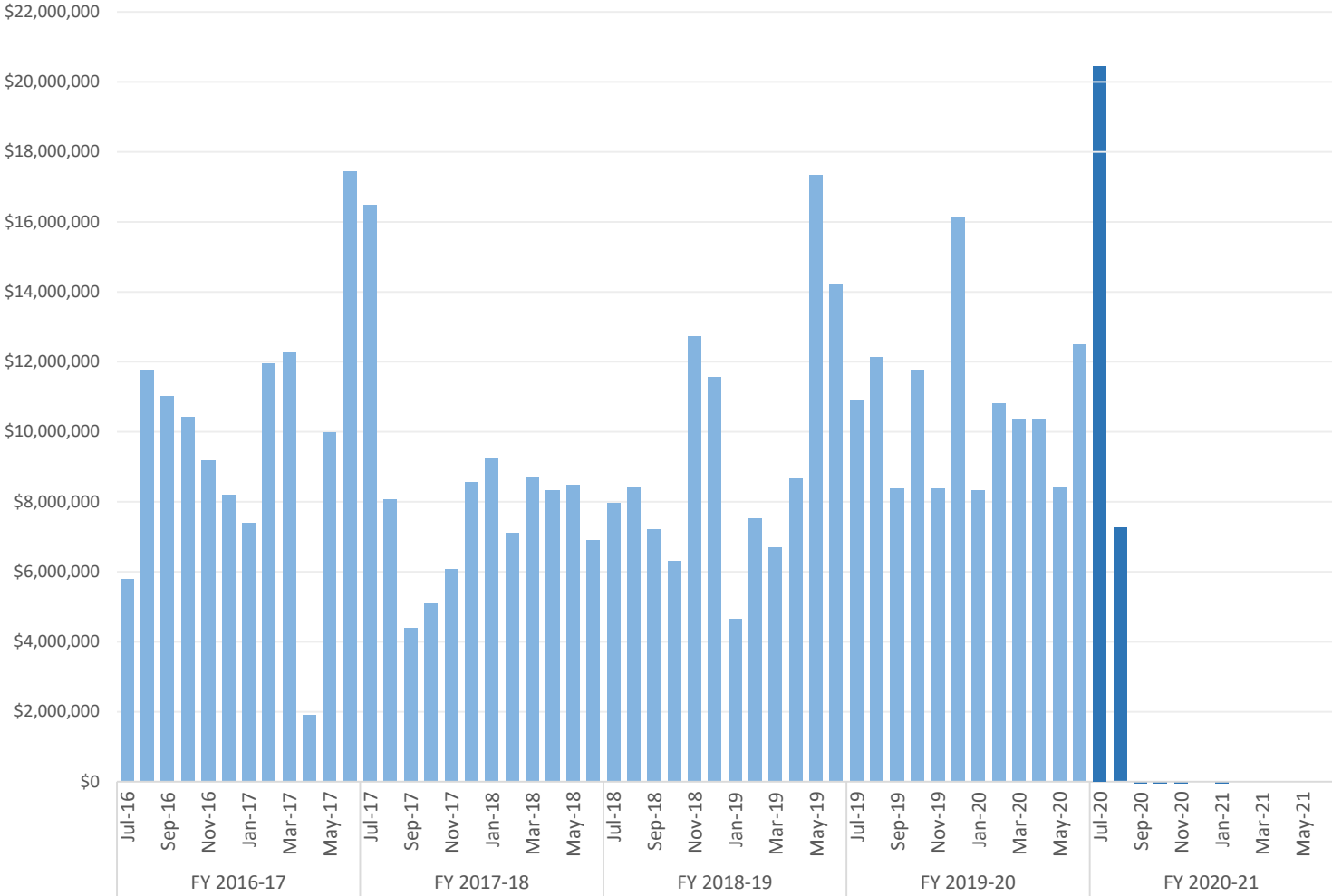


\* The current Priority Score Funding Threshold is 11.

# Encumbrances, Assignments, & Assessments

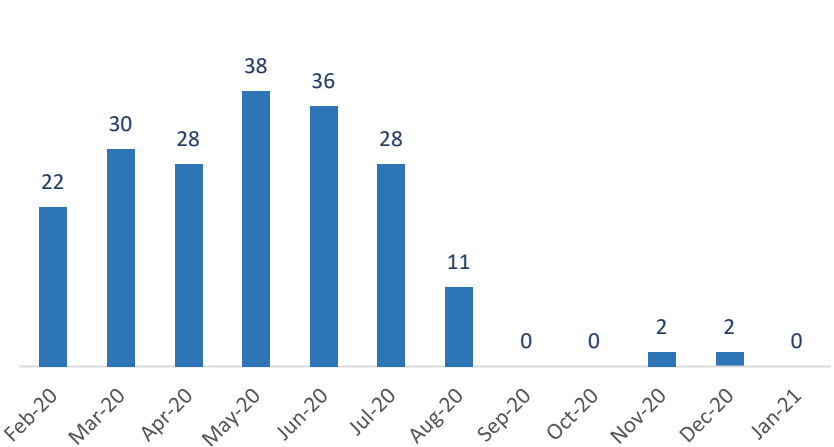
Monthly Net Encumbrance Amounts (FY 2016-17 thru present)

as of January 27, 2021



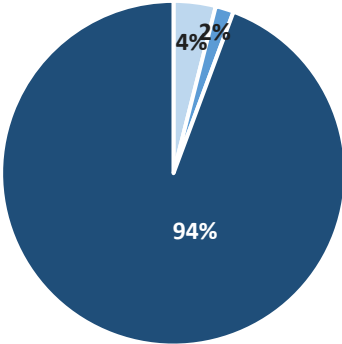
CSF Assignments by Month

as of January 31, 2021



Current Eligible Discharge Assessment Statuses

as of January 31, 2021



Assessment Status	Discharges
Needed	311
Ongoing	135
Report Approved*	7,428

\* Does not include 11,621 completed discharges.

# Encumbrance Activity

as of January 27, 2021

## FY 2020-21 Encumbrances by Month

Month	WO/PO Encumbered	*Net Encumbered
July 2020 <sup>†</sup>	\$ 11,813,915	\$ 20,444,849
August 2020	\$ 10,454,498	\$ 7,254,320
September 2020	\$ 2,524,065	\$ (2,970,265)
October 2020 <sup>†</sup>	\$ 3,099,629	\$ (2,313,074)
November 2020 <sup>†</sup>	\$ 1,867,006	\$ (1,520,989)
December 2020	\$ 3,072,783	\$ 26,783
January 2021	\$ 1,919,015	\$ (1,576,687)
February 2021	-	-
March 2021	-	-
April 2021	-	-
May 2021	-	-
June 2021	-	-
<b>Grand Total</b>	<b>\$ 34,750,911</b>	<b>\$ 19,344,938</b>

<sup>†</sup>Adjustments required due to audit of FY20-21 obligations to date.

## Total Encumbered by Fiscal Year Allocation

Fiscal Year	FCO Appropriation	**Total Encumbered	Appropriation Balance
Carry-Over	\$ 4,530,701	\$ 4,530,701	\$ 0
FY 2020-21	\$ 115,000,000	\$ 15,412,573	\$ 99,587,427

\* Includes WOs, POs, COs, Utilities & Adjustments.

\*\* Monthly Net Results totals are calculated from PO/WOs sent to F&A; Total Encumbered by Fiscal Year is calculated from all encumbered in STCM.

## FY 2020-21 Fiscal Activity by Phase

Phase	January 2021		FY to Date	
	Count	Amount	Count	Amount
Low Score Site Initiative	12	\$ 46,441	119	\$ 1,304,762
Site Assessment (incl. LSA)	0	\$ 0	148	\$ 4,841,399
Source Removal (incl. FPR)	0	\$ 0	17	\$ 4,849,021
Remedial Action Plan (incl. Pilot Test)	38	\$ 284,449	156	\$ 1,779,512
Remedial Action Construction	0	\$ 0	34	\$ 4,311,959
Operation & Maintenance	23	\$ 1,225,274	180	\$ 14,680,370
Post Active Remedial Monitoring	21	\$ 165,735	72	\$ 773,037
Natural Attenuation Monitoring	0	\$ 0	86	\$ 1,118,469
Well Abandonment/SRCO	21	\$ 197,116	125	\$ 1,092,381
<b>Sub Total</b>	<b>115</b>	<b>\$ 1,919,015</b>	<b>937</b>	<b>\$ 34,750,911</b>

Note: Well Abandonment includes POs for Verification for Well Abandonment. LSSI Obligations are reflected only after signed and returned from Contractor and include costs for Well Abandonment Activities under LSSI Cleanup.

## FY 2020-21 Net Fiscal Activity

Activity	January 2021	FY to Date
Purchase/Work Orders	\$ 1,919,015	\$ 34,750,911
Change Orders & Adjustments	\$ (3,767,579)	\$ (17,099,261)
Utilities	\$ 271,877	\$ 1,693,288
<b>Total**</b>	<b>\$ (1,576,687)</b>	<b>\$ 19,344,938</b>

# Current Eligible Discharge Statuses

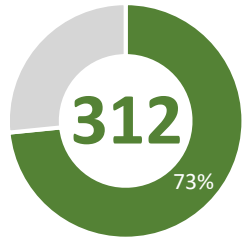
as of February 28, 2021



0% 3% 5% 8% 10% 13% 15% 18% 20% 23% 25% 28% 30% 33% 35% 38% 40% 43% 45% 48% 50% 53% 55% 58% 60% 63% 65% 68% 70% 73% 75% 78% 80% 83% 85% 88% 90% 93% 95% 98% 100%

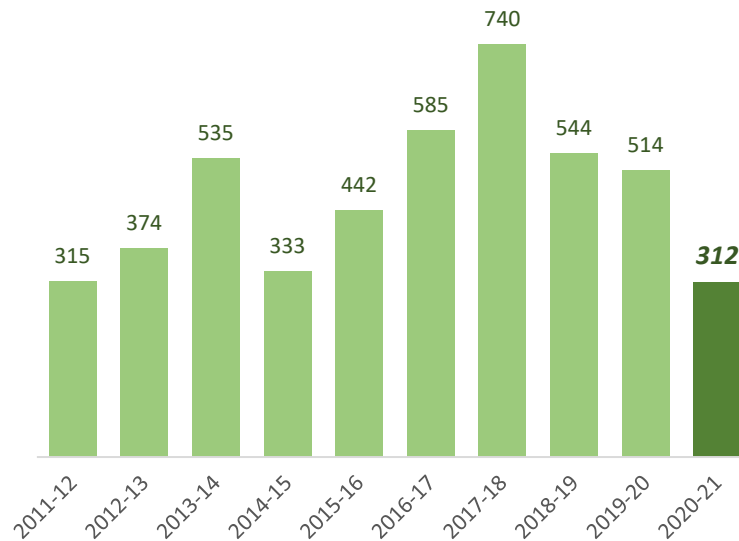
## FY 2020-21 Discharges Closed to Date

### Total Closed to Date:

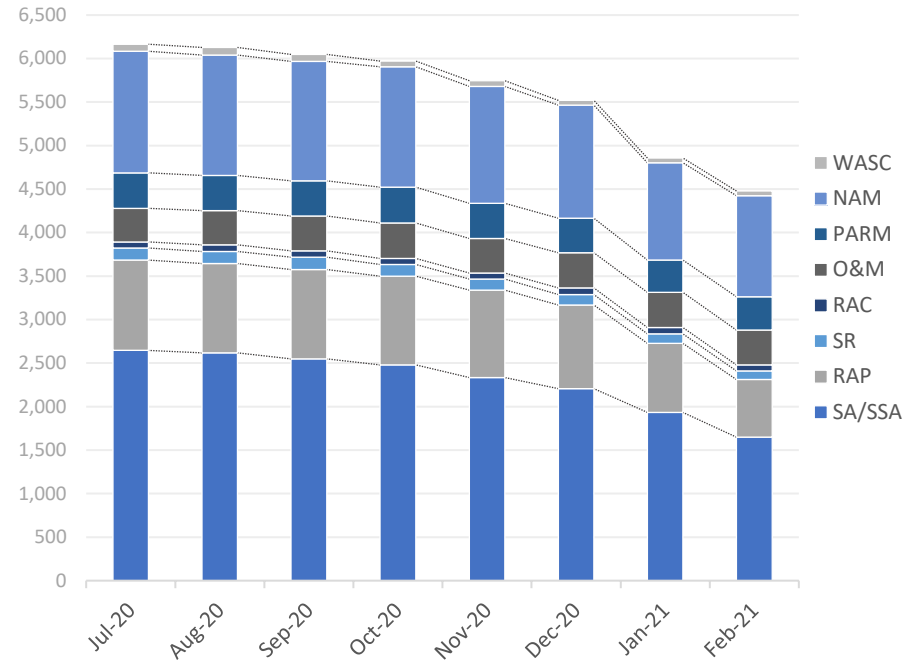


type	closures	% of total
LNFA	23	7%
NFA/SRCO	280	90%
NFAC	9	3%
NREQ	0	0%

## Discharge Closures by Fiscal Year

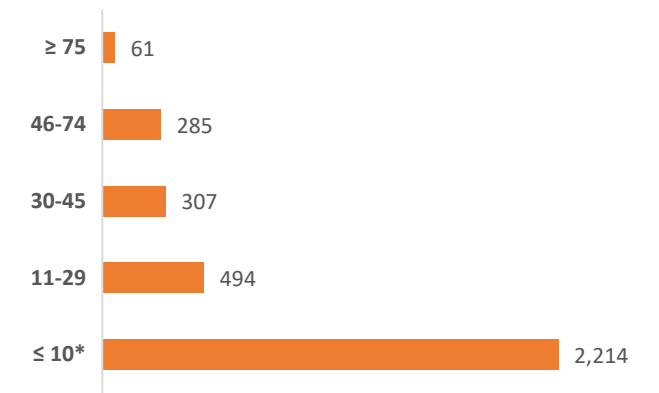


## Monthly Snapshot of Active Discharge Sub-Phases



Sub-Phase	Jul-20	Aug-20	Sep-20	Oct-20	Nov-20	Dec-20	Jan-21	Feb-21	Mar-21	Apr-21	May-21	Jun-21
Site Assessment/Supplemental (SA/SSA)	2,646	2,618	2,549	2,478	2,334	2,206	1,932	1,649				
Remedial Action Plan (RAP)	1,038	1,025	1,026	1,022	1,005	961	795	662				
Source Removal (SR)	139	141	142	133	128	122	110	99				
Remedial Action Construction (RAC)	70	74	74	71	67	74	72	69				
Operation & Maintenance (O&M)	386	396	400	405	400	405	403	400				
Post Active Remedial Monitoring (PARM)	408	402	403	413	402	397	371	383				
Natural Attenuation Monitoring (NAM)	1,397	1,385	1,375	1,385	1,343	1,301	1,119	1,162				
Well Abandonment/SRCO (WASC)	81	86	77	63	65	55	55	54				

## Current Inactive Discharge Scores

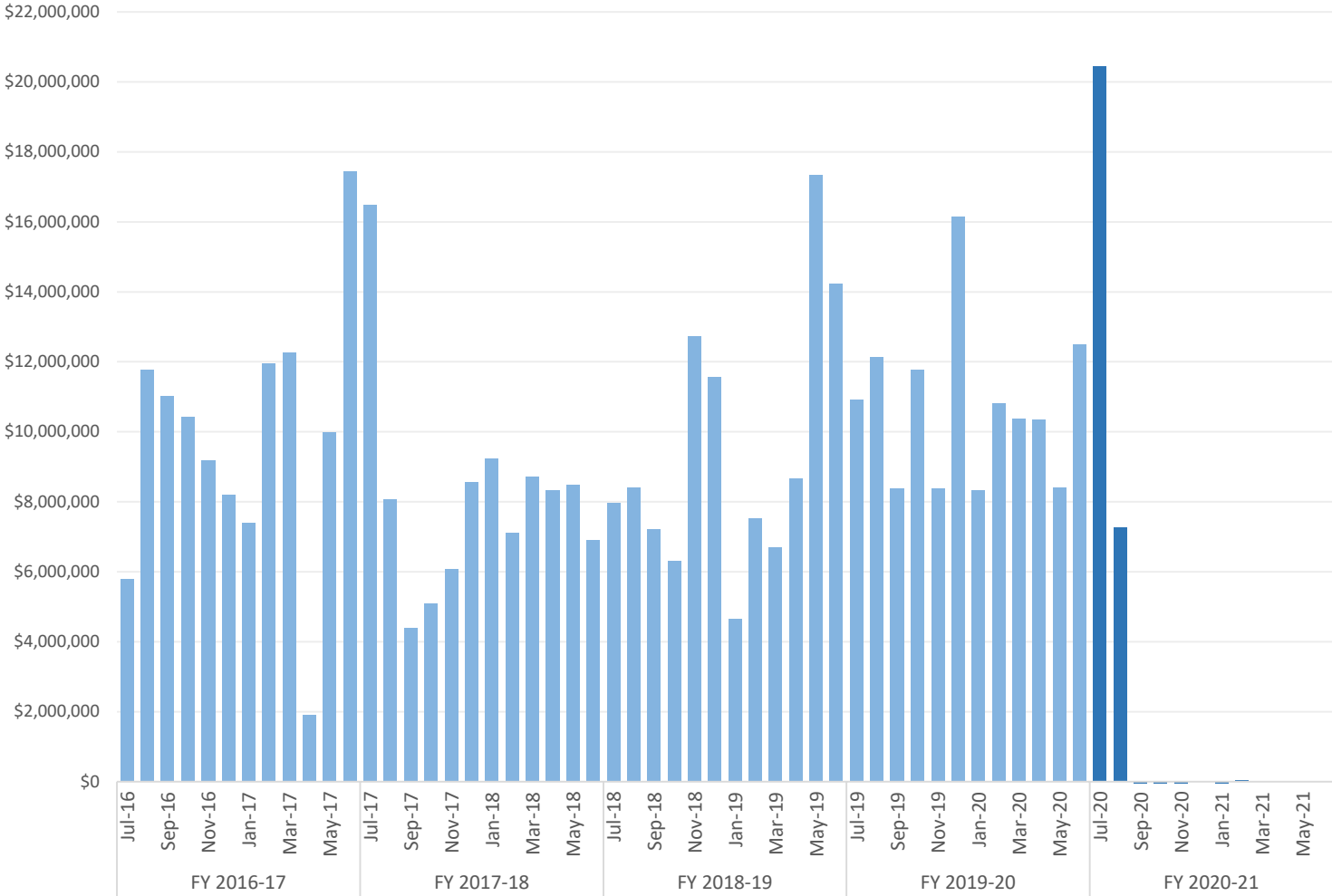


\* The current Priority Score Funding Threshold is 11.

# Encumbrances, Assignments, & Assessments

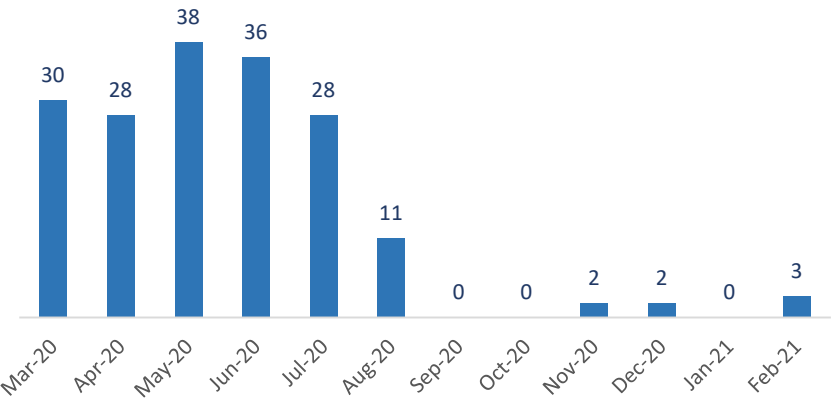
Monthly Net Encumbrance Amounts (FY 2016-17 thru present)

as of February 24, 2021



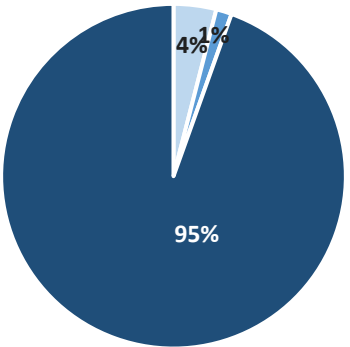
CSF Assignments by Month

as of February 28, 2021



Current Eligible Discharge Assessment Statuses

as of February 28, 2021



Assessment Status	Discharges
Needed	314
Ongoing	115
Report Approved*	7,410

\* Does not include 11,659 completed discharges.

# Encumbrance Activity

as of February 24, 2021

## FY 2020-21 Encumbrances by Month

Month	WO/PO Encumbered	*Net Encumbered
July 2020 <sup>†</sup>	\$ 11,813,915	\$ 20,444,849
August 2020	\$ 10,454,498	\$ 7,254,320
September 2020	\$ 2,524,065	\$ (2,970,265)
October 2020 <sup>†</sup>	\$ 3,099,629	\$ (2,313,074)
November 2020 <sup>†</sup>	\$ 1,867,006	\$ (1,520,989)
December 2020	\$ 3,072,783	\$ 26,783
January 2021	\$ 1,919,015	\$ (1,576,687)
February 2021	\$ 3,155,368	\$ 40,415
March 2021	-	-
April 2021	-	-
May 2021	-	-
June 2021	-	-
<b>Grand Total</b>	<b>\$ 37,906,279</b>	<b>\$ 19,385,353</b>

<sup>†</sup> Adjustments required due to audit of FY20-21 obligations to date.

## Total Encumbered by Fiscal Year Allocation

Fiscal Year	FCO Appropriation	**Total Encumbered	Appropriation Balance
Carry-Over	\$ 4,530,701	\$ 4,530,701	\$ 0
FY 2020-21	\$ 115,000,000	\$ 15,660,157	\$ 99,339,843

\* Includes WOs, POs, COs, Utilities & Adjustments.

\*\* Monthly Net Results totals are calculated from PO/WOs sent to F&A; Total Encumbered by Fiscal Year is calculated from all encumbered in STCM.

## FY 2020-21 Fiscal Activity by Phase

Phase	February 2021		FY to Date	
	Count	Amount	Count	Amount
Low Score Site Initiative	21	\$ 140,119	140	\$ 1,444,881
Site Assessment (incl. LSA)	0	\$ 0	148	\$ 4,841,399
Source Removal (incl. FPR)	0	\$ 0	17	\$ 4,849,021
Remedial Action Plan (incl. Pilot Test)	55	\$ 493,270	211	\$ 2,272,782
Remedial Action Construction	0	\$ 0	34	\$ 4,311,959
Operation & Maintenance	23	\$ 1,356,418	203	\$ 16,036,788
Post Active Remedial Monitoring	17	\$ 118,499	89	\$ 891,537
Natural Attenuation Monitoring	157	\$ 894,877	243	\$ 2,013,346
Well Abandonment/SRCO	16	\$ 152,185	141	\$ 1,244,566
<b>Sub Total</b>	<b>289</b>	<b>\$ 3,155,368</b>	<b>1,226</b>	<b>\$ 37,906,279</b>

Note: Well Abandonment includes POs for Verification for Well Abandonment. LSSI Obligations are reflected only after signed and returned from Contractor and include costs for Well Abandonment Activities under LSSI Cleanup.

## FY 2020-21 Net Fiscal Activity

Activity	February 2021	FY to Date
Purchase/Work Orders	\$ 3,155,368	\$ 37,906,279
Change Orders & Adjustments	\$ (3,411,937)	\$ (20,511,198)
Utilities	\$ 296,984	\$ 1,990,272
<b>Total**</b>	<b>\$ 40,415</b>	<b>\$ 19,385,353</b>



# Current Eligible Discharge Statuses

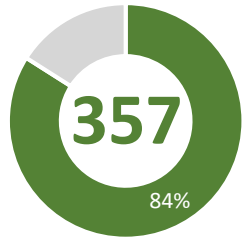
as of April 4, 2021



0% 3% 5% 8% 10% 13% 15% 18% 20% 23% 25% 28% 30% 33% 35% 38% 40% 43% 45% 48% 50% 53% 55% 58% 60% 63% 65% 68% 70% 73% 75% 78% 80% 83% 85% 88% 90% 93% 95% 98% 100%

## FY 2020-21 Discharges Closed to Date

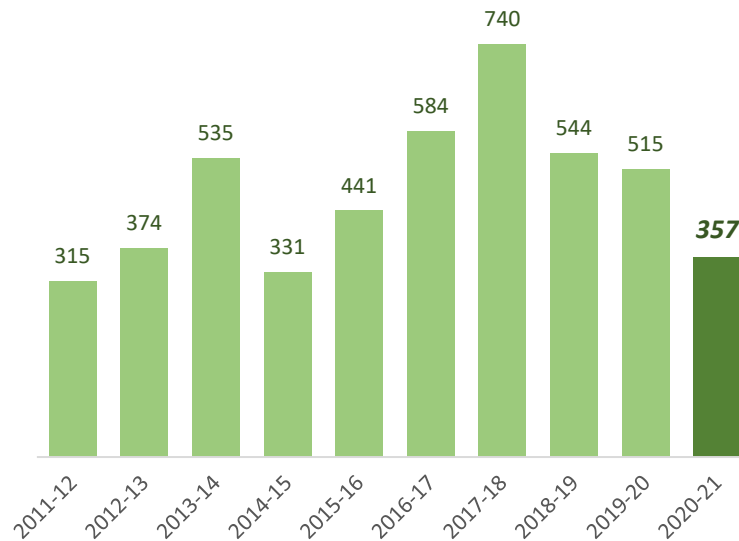
### Total Closed to Date:



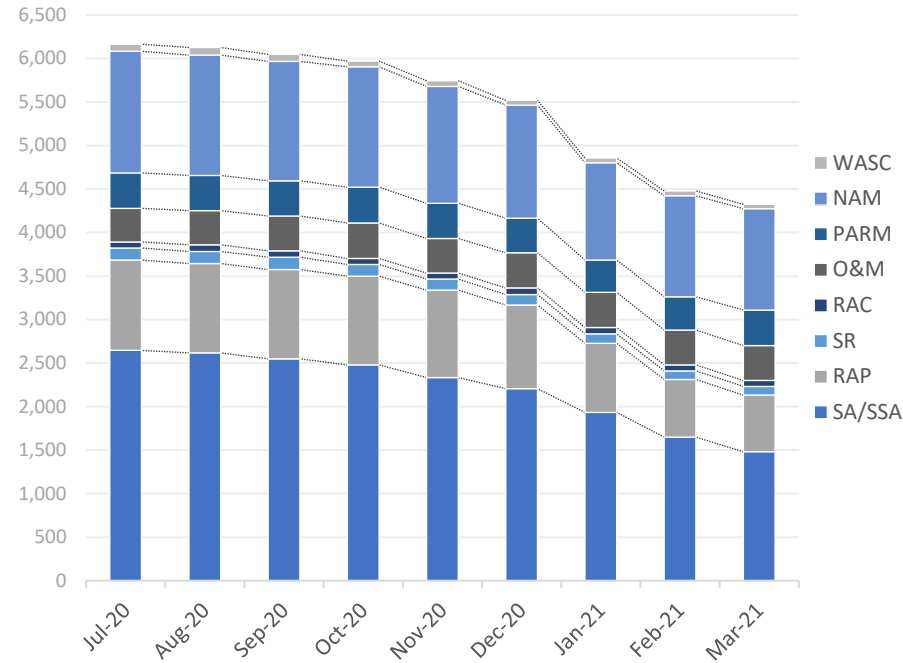
of 425  
projected closures

type	closures	% of total
LNFA	29	8%
NFA/SRCO	318	89%
NFAC	10	3%
NREQ	0	0%

## Discharge Closures by Fiscal Year

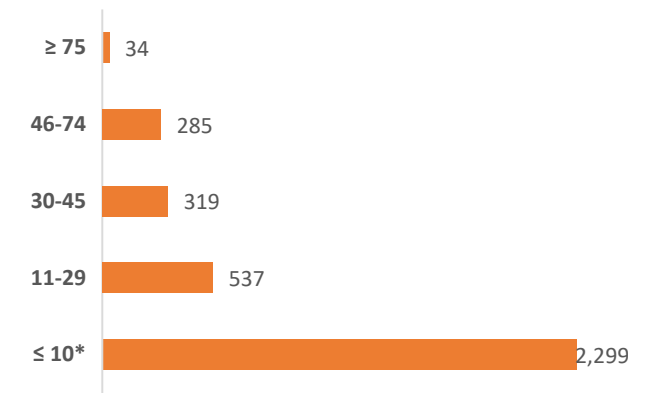


## Monthly Snapshot of Active Discharge Sub-Phases



Sub-Phase	Jul-20	Aug-20	Sep-20	Oct-20	Nov-20	Dec-20	Jan-21	Feb-21	Mar-21	Apr-21	May-21	Jun-21
Site Assessment/Supplemental (SA/SSA)	2,646	2,618	2,549	2,478	2,334	2,206	1,932	1,649	1,481			
Remedial Action Plan (RAP)	1,038	1,025	1,026	1,022	1,005	961	795	662	651			
Source Removal (SR)	139	141	142	133	128	122	110	99	101			
Remedial Action Construction (RAC)	70	74	74	71	67	74	72	69	67			
Operation & Maintenance (O&M)	386	396	400	405	400	405	403	400	401			
Post Active Remedial Monitoring (PARM)	408	402	403	413	402	397	371	383	410			
Natural Attenuation Monitoring (NAM)	1,397	1,385	1,375	1,385	1,343	1,301	1,119	1,162	1,164			
Well Abandonment/SRCO (WASC)	81	86	77	63	65	55	55	54	50			

## Current Inactive Discharge Scores

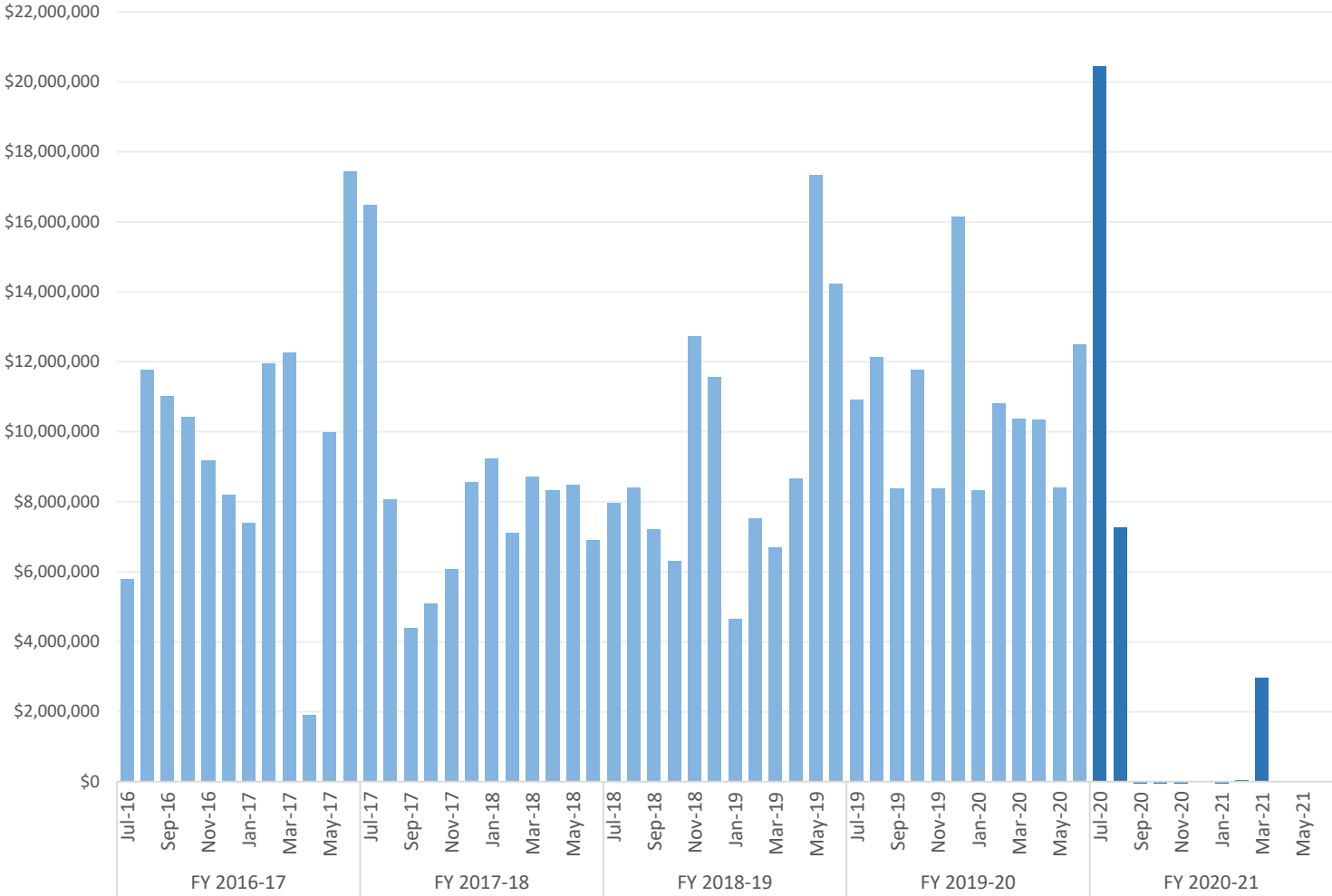


\* The current Priority Score Funding Threshold is 11.

# Encumbrances, Assignments, & Assessments

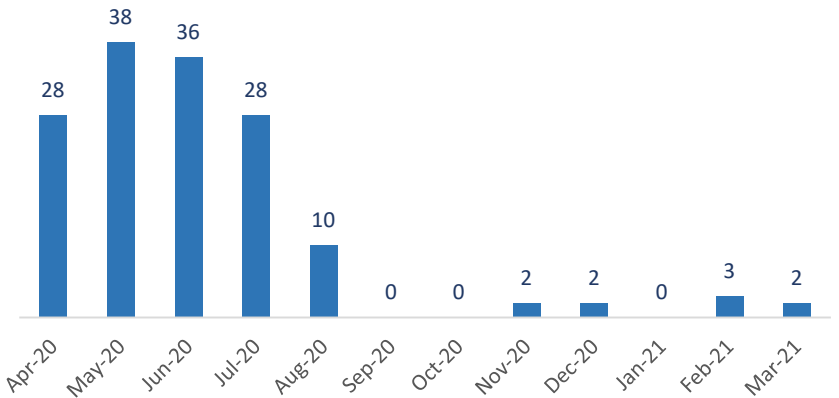
Monthly Net Encumbrance Amounts (FY 2016-17 thru present)

as of March 31, 2021



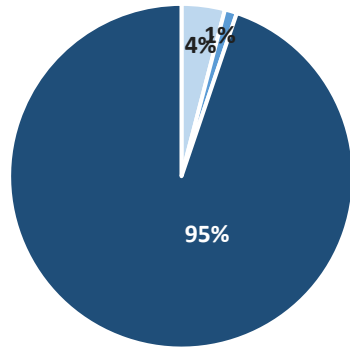
CSF Assignments by Month

as of April 4, 2021



Current Eligible Discharge Assessment Statuses

as of April 4, 2021



Assessment Status	Discharges
Needed	317
Ongoing	89
Report Approved*	7,393

\* Does not include 11,707 completed discharges.

# Encumbrance Activity

as of March 31, 2021

## FY 2020-21 Encumbrances by Month

Month	WO/PO Encumbered	*Net Encumbered
July 2020 <sup>†</sup>	\$ 11,813,915	\$ 20,444,849
August 2020	\$ 10,454,498	\$ 7,254,320
September 2020	\$ 2,524,065	\$ (2,970,265)
October 2020 <sup>†</sup>	\$ 3,099,629	\$ (2,313,074)
November 2020 <sup>†</sup>	\$ 1,867,006	\$ (1,520,989)
December 2020	\$ 3,072,783	\$ 26,783
January 2021	\$ 1,919,015	\$ (1,576,687)
February 2021	\$ 3,155,368	\$ 40,415
March 2021	\$ 6,212,050	\$ 2,968,332
April 2021	-	-
May 2021	-	-
June 2021	-	-
<b>Grand Total</b>	<b>\$ 44,118,329</b>	<b>\$ 22,353,685</b>

<sup>†</sup> Adjustments required due to audit of FY20-21 obligations to date.

## Total Encumbered by Fiscal Year Allocation

Fiscal Year	FCO Appropriation	**Total Encumbered	Appropriation Balance
Carry-Over	\$ 4,530,701	\$ 4,530,701	\$ 0
FY 2020-21	\$ 115,000,000	\$ 18,777,263	\$ 96,222,737

\* Includes WOs, POs, COs, Utilities & Adjustments.

\*\* Monthly Net Results totals are calculated from PO/WOs sent to F&A; Total Encumbered by Fiscal Year is calculated from all encumbered in STCM.

## FY 2020-21 Fiscal Activity by Phase

Phase	March 2021		FY to Date	
	Count	Amount	Count	Amount
Low Score Site Initiative	28	\$ 301,237	168	\$ 1,746,118
Site Assessment (incl. LSA)	0	\$ 0	148	\$ 4,841,399
Source Removal (incl. FPR)	0	\$ 0	17	\$ 4,849,021
Remedial Action Plan (incl. Pilot Test)	69	\$ 820,446	280	\$ 3,093,228
Remedial Action Construction	0	\$ 0	34	\$ 4,311,959
Operation & Maintenance	44	\$ 2,593,491	247	\$ 18,630,279
Post Active Remedial Monitoring	34	\$ 453,332	123	\$ 1,344,869
Natural Attenuation Monitoring	269	\$ 1,763,618	512	\$ 3,776,964
Well Abandonment/SRCO	25	\$ 279,926	166	\$ 1,524,492
<b>Sub Total</b>	<b>469</b>	<b>\$ 6,212,050</b>	<b>1,695</b>	<b>\$ 44,118,329</b>

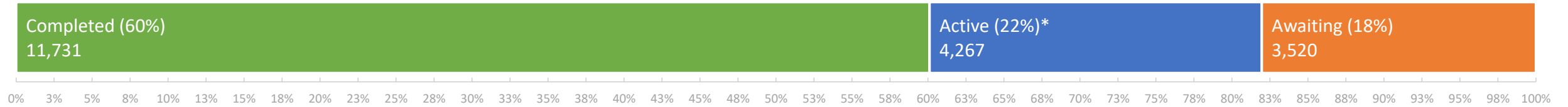
Note: Well Abandonment includes POs for Verification for Well Abandonment. LSSI Obligations are reflected only after signed and returned from Contractor and include costs for Well Abandonment Activities under LSSI Cleanup.

## FY 2020-21 Net Fiscal Activity

Activity	March 2021	FY to Date
Purchase/Work Orders	\$ 6,212,050	\$ 44,118,329
Change Orders & Adjustments	\$ (3,591,451)	\$ (24,102,649)
Utilities	\$ 347,732	\$ 2,338,004
<b>Total**</b>	<b>\$ 2,968,332</b>	<b>\$ 22,353,685</b>

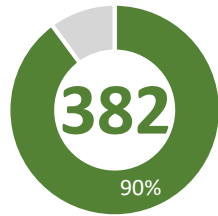
# Current Eligible Discharge Statuses

as of May 2, 2021



## FY 2020-21 Discharges Closed to Date

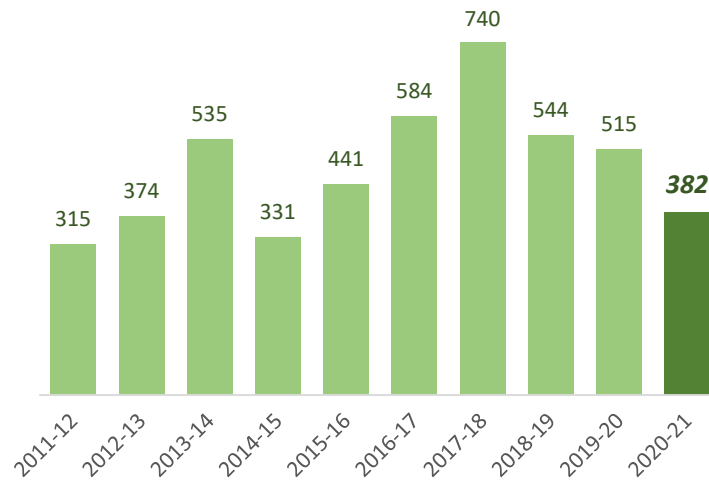
### Total Closed to Date:



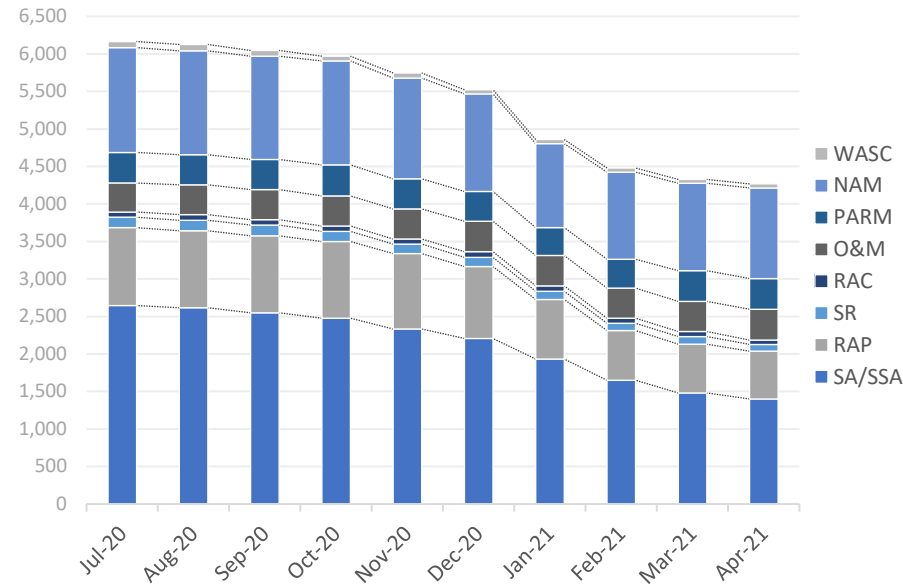
of 425  
projected closures

type	closures	% of total
LNFA	31	8%
NFA/SRCO	341	89%
NFAC	10	3%
NREQ	0	0%

## Discharge Closures by Fiscal Year

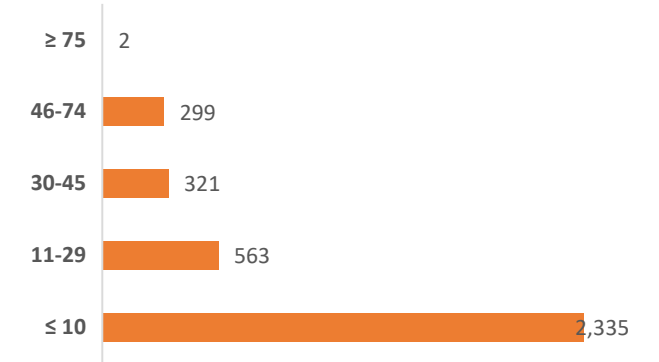


## Monthly Snapshot of Active Discharge Sub-Phases



Sub-Phase	Jul-20	Aug-20	Sep-20	Oct-20	Nov-20	Dec-20	Jan-21	Feb-21	Mar-21	Apr-21	May-21	Jun-21
Site Assessment/Supplemental (SA/SSA)	2,646	2,618	2,549	2,478	2,334	2,206	1,932	1,649	1,481	1,401		
Remedial Action Plan (RAP)	1,038	1,025	1,026	1,022	1,005	961	795	662	651	636		
Source Removal (SR)	139	141	142	133	128	122	110	99	101	91		
Remedial Action Construction (RAC)	70	74	74	71	67	74	72	69	67	57		
Operation & Maintenance (O&M)	386	396	400	405	400	405	403	400	401	412		
Post Active Remedial Monitoring (PARM)	408	402	403	413	402	397	371	383	410	409		
Natural Attenuation Monitoring (NAM)	1,397	1,385	1,375	1,385	1,343	1,301	1,119	1,162	1,164	1,208		
Well Abandonment/SRCO (WASC)	81	86	77	63	65	55	55	54	50	53		

## Current Inactive Discharge Scores

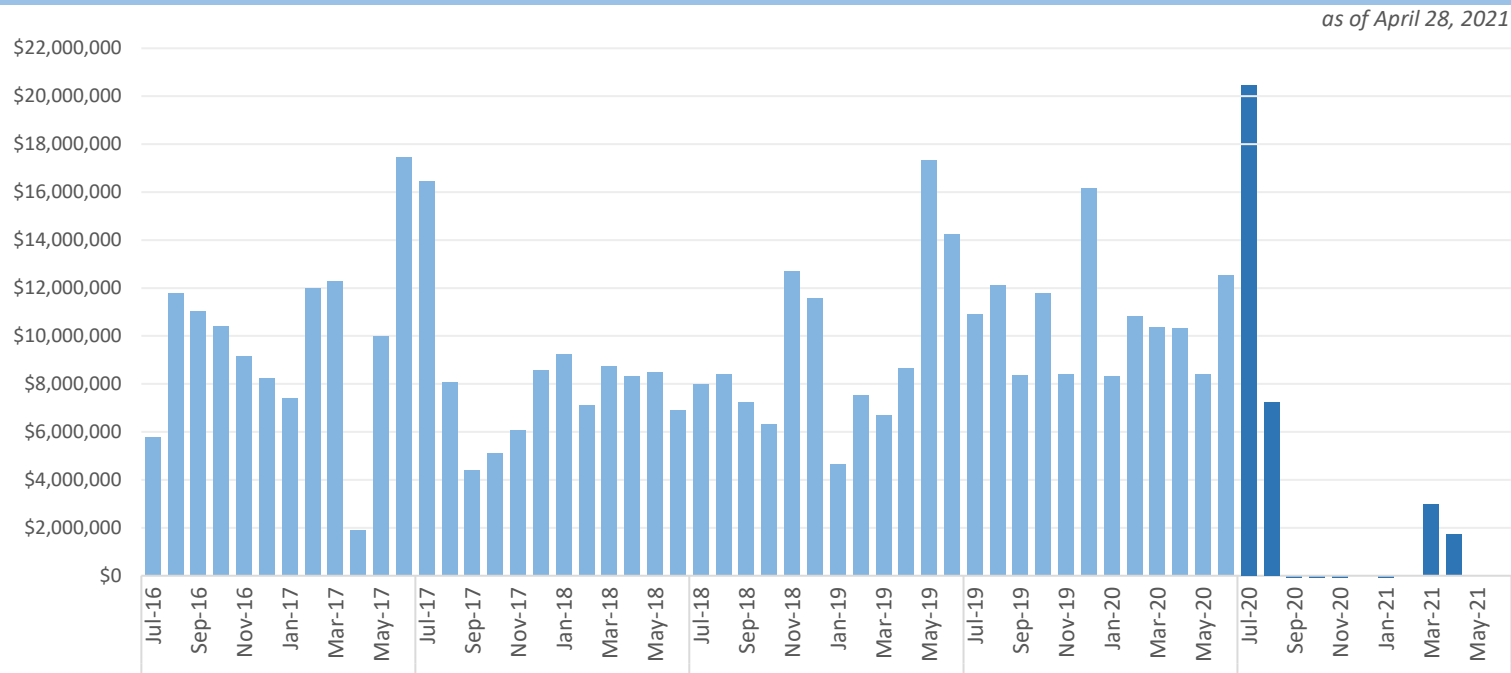


Note: The current Priority Score Funding Threshold is 11.

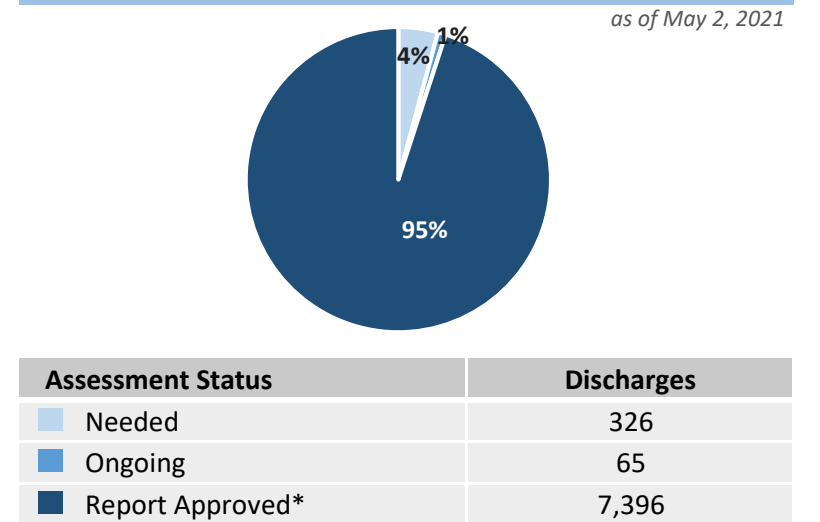
\* The count of 'Active' discharges includes 17 eligible discharges currently managed by Districts.

# Encumbrances, Assignments, & Assessments

## Monthly Net Encumbrance Amounts (FY 2016-17 thru present)

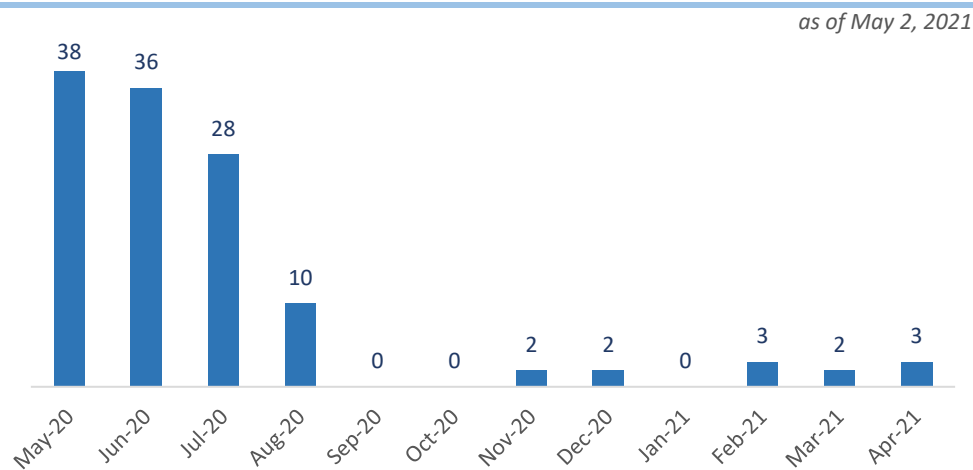


## Current Eligible Discharge Assessment Statuses

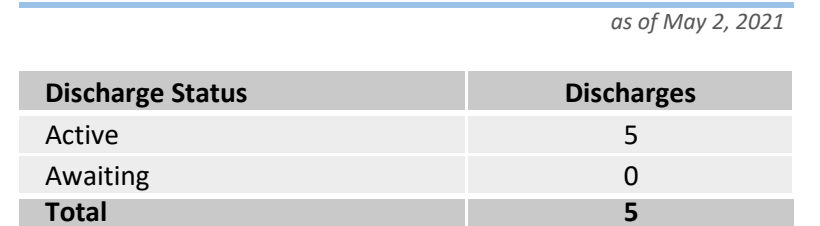


\* Does not include 11,731 completed discharges.

## CSF Assignments by Month



## Open Eligible Discharges with Cap Exhausted



# Encumbrance Activity

as of April 28, 2021

## FY 2020-21 Encumbrances by Month

Month	WO/PO Encumbered	*Net Encumbered
July 2020 <sup>†</sup>	\$ 11,813,915	\$ 20,444,849
August 2020	\$ 10,454,498	\$ 7,254,320
September 2020	\$ 2,524,065	\$ (2,970,265)
October 2020 <sup>†</sup>	\$ 3,099,629	\$ (2,313,074)
November 2020 <sup>†</sup>	\$ 1,867,006	\$ (1,520,989)
December 2020	\$ 3,072,783	\$ 26,783
January 2021	\$ 1,919,015	\$ (1,576,687)
February 2021	\$ 3,155,368	\$ 40,415
March 2021	\$ 6,212,050	\$ 2,968,332
April 2021	\$ 4,199,084	\$ 1,720,409
May 2021	-	-
June 2021	-	-
<b>Grand Total</b>	<b>\$ 48,317,414</b>	<b>\$ 24,074,094</b>

<sup>†</sup> Adjustments required due to audit of FY20-21 obligations to date.

## Total Encumbered by Fiscal Year Allocation

Fiscal Year	FCO Appropriation	**Total Encumbered	Appropriation Balance
Carry-Over	\$ 4,530,701	\$ 4,530,701	\$ 0
FY 2020-21	\$ 115,000,000	\$ 20,708,285	\$ 94,291,715

\* Includes WOs, POs, COs, Utilities & Adjustments.

\*\* Monthly Net Results totals are calculated from PO/WOs sent to F&A; Total Encumbered by Fiscal Year is calculated from all encumbered in STCM.

## FY 2020-21 Fiscal Activity by Phase

Phase	April 2021		FY to Date	
	Count	Amount	Count	Amount
Low Score Site Initiative	15	\$ 204,489	183	\$ 1,950,607
Site Assessment (incl. LSA)	12	\$ 155,988	160	\$ 4,997,387
Source Removal (incl. FPR)	2	\$ 193,588	19	\$ 5,042,609
Remedial Action Plan (incl. Pilot Test)	38	\$ 741,018	318	\$ 3,834,246
Remedial Action Construction	0	\$ 0	34	\$ 4,311,959
Operation & Maintenance	29	\$ 1,875,592	276	\$ 20,505,871
Post Active Remedial Monitoring	15	\$ 165,887	138	\$ 1,510,756
Natural Attenuation Monitoring	82	\$ 662,264	594	\$ 4,439,228
Well Abandonment/SRCO	23	\$ 200,259	189	\$ 1,724,750
<b>Sub Total</b>	<b>216</b>	<b>\$ 4,199,084</b>	<b>1,911</b>	<b>\$ 48,317,414</b>

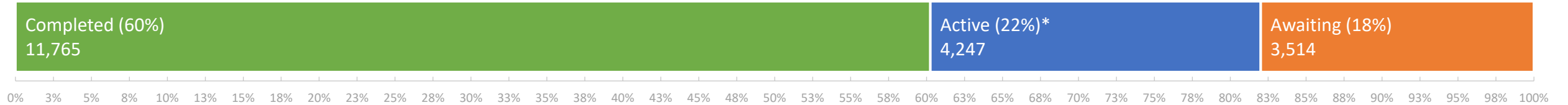
Note: Well Abandonment includes POs for Verification for Well Abandonment. LSSI Obligations are reflected only after signed and returned from Contractor and include costs for Well Abandonment Activities under LSSI Cleanup.

## FY 2020-21 Net Fiscal Activity

Activity	April 2021	FY to Date
Purchase/Work Orders	\$ 4,199,084	\$ 48,317,414
Change Orders & Adjustments	\$ (2,784,807)	\$ (26,887,456)
Utilities	\$ 306,132	\$ 2,644,137
<b>Total**</b>	<b>\$ 1,720,409</b>	<b>\$ 24,074,094</b>

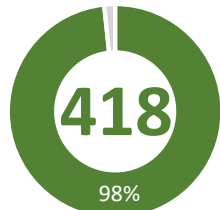
# Current Eligible Discharge Statuses

as of May 31, 2021



## FY 2020-21 Discharges Closed to Date

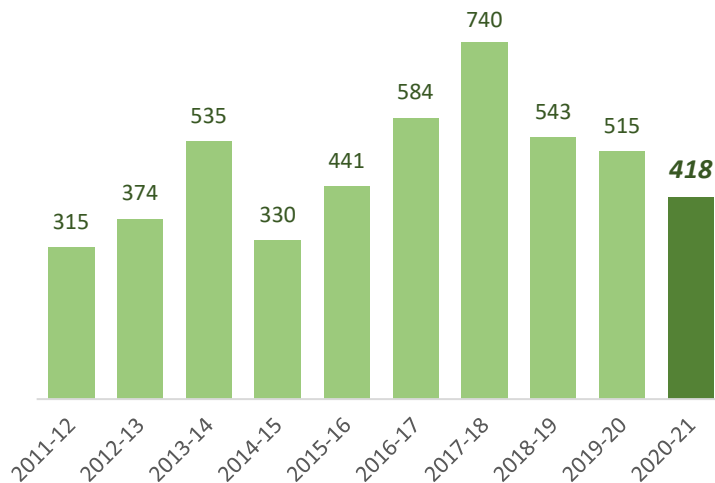
Total Closed to Date:



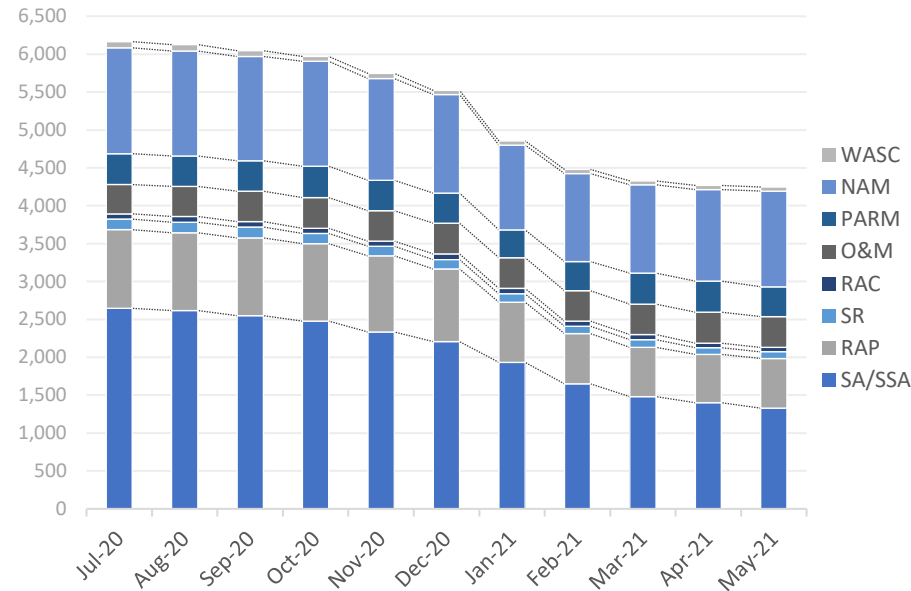
of 425  
projected closures

type	closures	% of total

## Discharge Closures by Fiscal Year

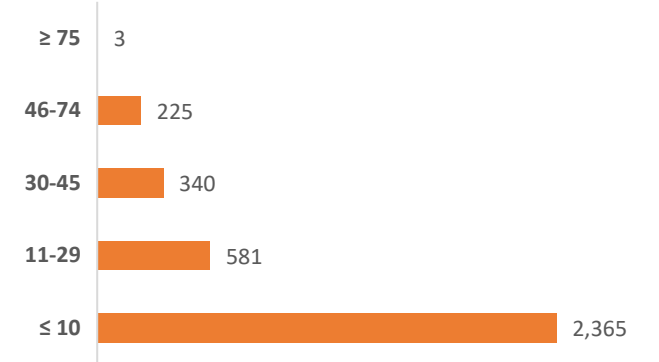


## Monthly Snapshot of Active Discharge Sub-Phases



Sub-Phase	Jul-20	Aug-20	Sep-20	Oct-20	Nov-20	Dec-20	Jan-21	Feb-21	Mar-21	Apr-21	May-21	Jun-21
Site Assessment/Supplemental (SA/SSA)	2,646	2,618	2,549	2,478	2,334	2,206	1,932	1,649	1,481	1,401	1,329	
Remedial Action Plan (RAP)	1,038	1,025	1,026	1,022	1,005	961	795	662	651	636	656	
Source Removal (SR)	139	141	142	133	128	122	110	99	101	91	86	
Remedial Action Construction (RAC)	70	74	74	71	67	74	72	69	67	57	59	
Operation & Maintenance (O&M)	386	396	400	405	400	405	403	400	401	412	407	
Post Active Remedial Monitoring (PARM)	408	402	403	413	402	397	371	383	410	409	394	
Natural Attenuation Monitoring (NAM)	1,397	1,385	1,375	1,385	1,343	1,301	1,119	1,162	1,164	1,208	1,263	
Well Abandonment/SRCO (WASC)	81	86	77	63	65	55	55	54	50	53	53	

## Current Inactive Discharge Scores

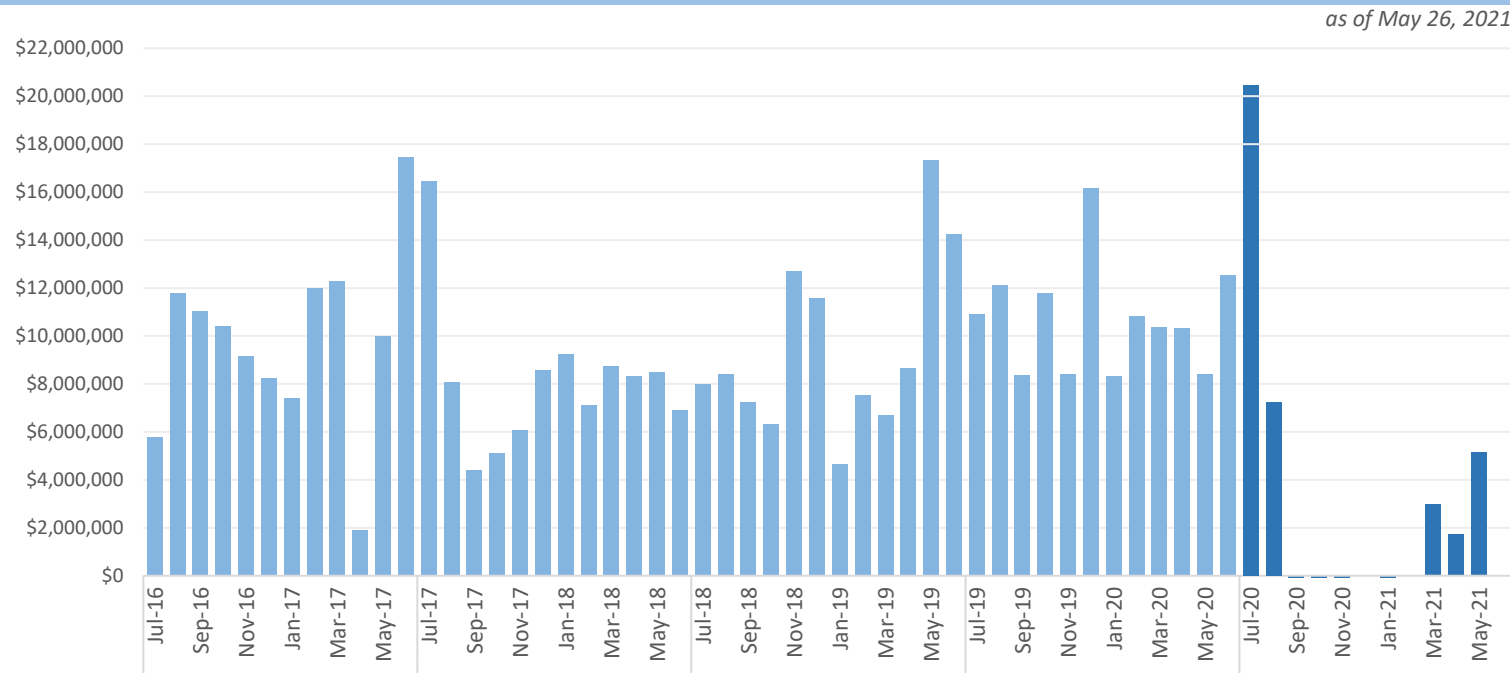


Note: The current Priority Score Funding Threshold is 11.

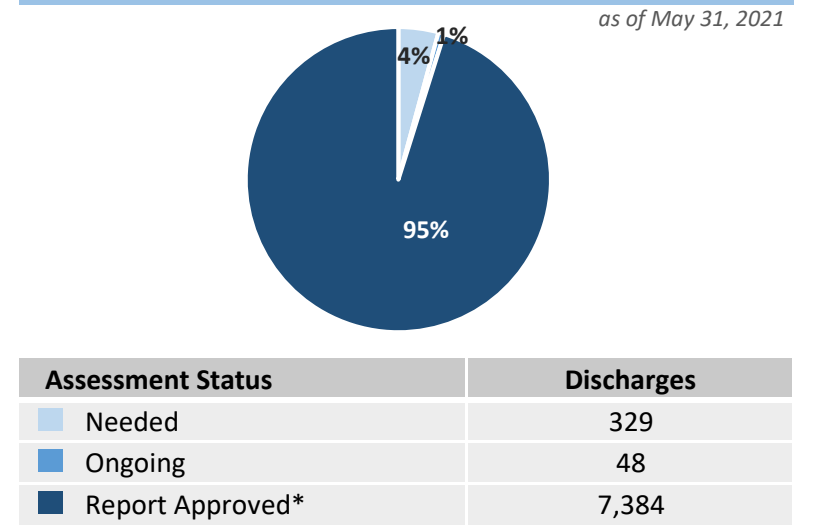
\* The count of 'Active' discharges includes 19 eligible discharges currently managed by Districts.

# Encumbrances, Assignments, & Assessments

## Monthly Net Encumbrance Amounts (FY 2016-17 thru present)

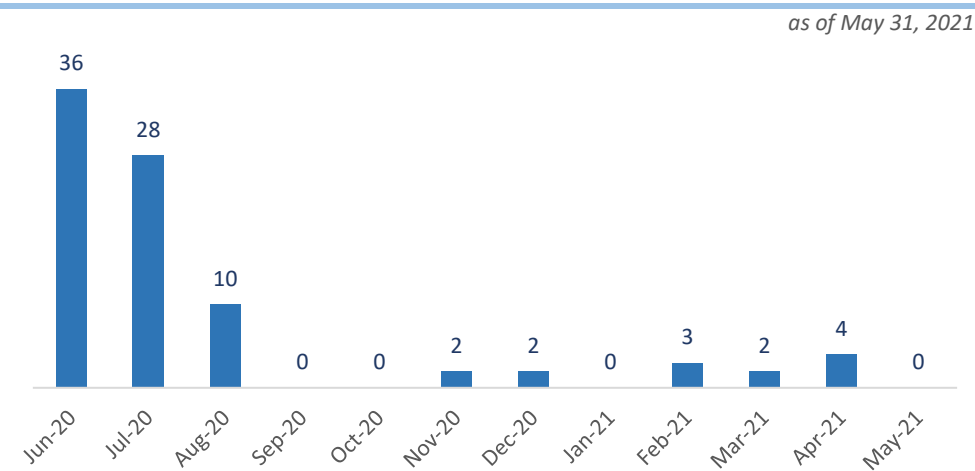


## Current Eligible Discharge Assessment Statuses

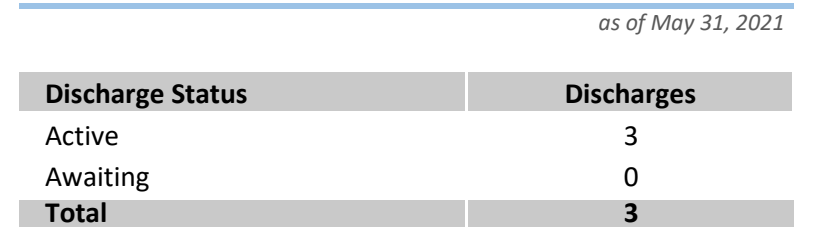


\* Does not include 11,765 completed discharges.

## CSF Assignments by Month



## Open Eligible Discharges with Cap Exhausted





# Encumbrance Activity

as of May 26, 2021

## FY 2020-21 Encumbrances by Month

Month	WO/PO Encumbered	*Net Encumbered
July 2020 <sup>†</sup>	\$ 11,813,915	\$ 20,444,849
August 2020	\$ 10,454,498	\$ 7,254,320
September 2020	\$ 2,524,065	\$ (2,970,265)
October 2020 <sup>†</sup>	\$ 3,099,629	\$ (2,313,074)
November 2020 <sup>†</sup>	\$ 1,867,006	\$ (1,520,989)
December 2020	\$ 3,072,783	\$ 26,783
January 2021	\$ 1,919,015	\$ (1,576,687)
February 2021	\$ 3,155,368	\$ 40,415
March 2021	\$ 6,212,050	\$ 2,968,332
April 2021	\$ 4,199,084	\$ 1,720,409
May 2021	\$ 7,981,843	\$ 5,141,003
June 2021	-	-
<b>Grand Total</b>	<b>\$ 56,299,256</b>	<b>\$ 29,215,097</b>

<sup>†</sup> Adjustments required due to audit of FY20-21 obligations to date.

## Total Encumbered by Fiscal Year Allocation

Fiscal Year	FCO Appropriation	**Total Encumbered	Appropriation Balance
Carry-Over	\$ 4,530,701	\$ 4,530,701	\$ 0
FY 2020-21	\$ 115,000,000	\$ 26,460,119	\$ 88,539,881

\* Includes WOs, POs, COs, Utilities & Adjustments.

\*\* Monthly Net Results totals are calculated from PO/WOs sent to F&A; Total Encumbered by Fiscal Year is calculated from all encumbered in STCM.

## FY 2020-21 Fiscal Activity by Phase

Phase	May 2021		FY to Date	
	Count	Amount	Count	Amount
Low Score Site Initiative	8	\$ 102,186	191	\$ 2,052,793
Site Assessment (incl. LSA)	20	\$ 721,568	180	\$ 5,718,955
Source Removal (incl. FPR)	1	\$ 63,359	20	\$ 5,105,968
Remedial Action Plan (incl. Pilot Test)	43	\$ 854,920	361	\$ 4,689,166
Remedial Action Construction	7	\$ 740,510	41	\$ 5,052,469
Operation & Maintenance	50	\$ 4,263,182	326	\$ 24,769,053
Post Active Remedial Monitoring	16	\$ 231,545	154	\$ 1,742,301
Natural Attenuation Monitoring	81	\$ 741,662	675	\$ 5,180,890
Well Abandonment/SRCO	23	\$ 262,911	212	\$ 1,987,661
<b>Sub Total</b>	<b>249</b>	<b>\$ 7,981,843</b>	<b>2,160</b>	<b>\$ 56,299,256</b>

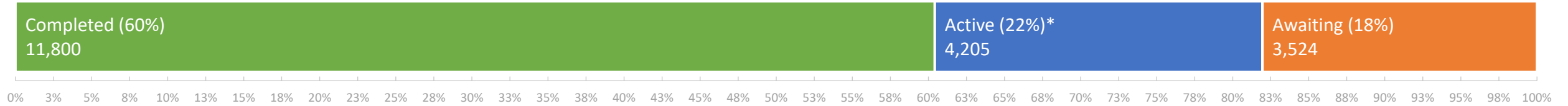
Note: Well Abandonment includes POs for Verification for Well Abandonment. LSSI Obligations are reflected only after signed and returned from Contractor and include costs for Well Abandonment Activities under LSSI Cleanup.

## FY 2020-21 Net Fiscal Activity

Activity	May 2021	FY to Date
Purchase/Work Orders	\$ 7,981,843	\$ 56,299,256
Change Orders & Adjustments	\$ (3,123,375)	\$ (30,010,831)
Utilities	\$ 282,536	\$ 2,926,672
<b>Total**</b>	<b>\$ 5,141,003</b>	<b>\$ 29,215,097</b>

# Current Eligible Discharge Statuses

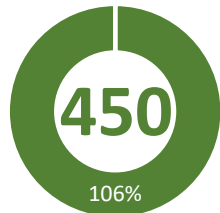
as of July 1, 2021



## FY 2020-21 Discharges Closed to Date

as of June 30, 2021

Total Closed to Date:

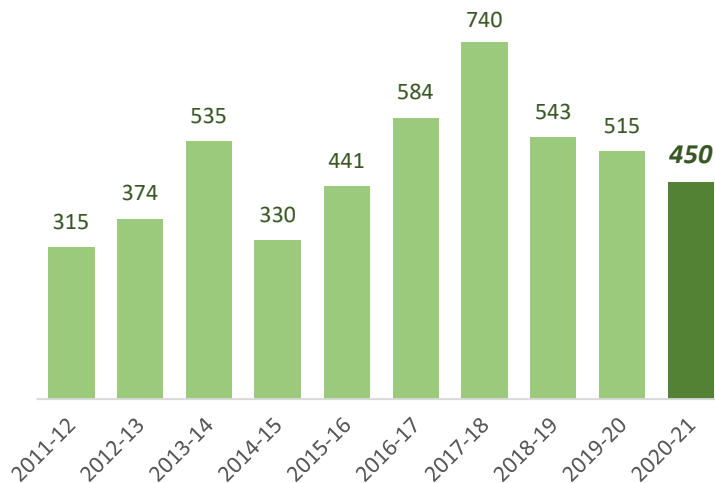


of 425  
projected closures

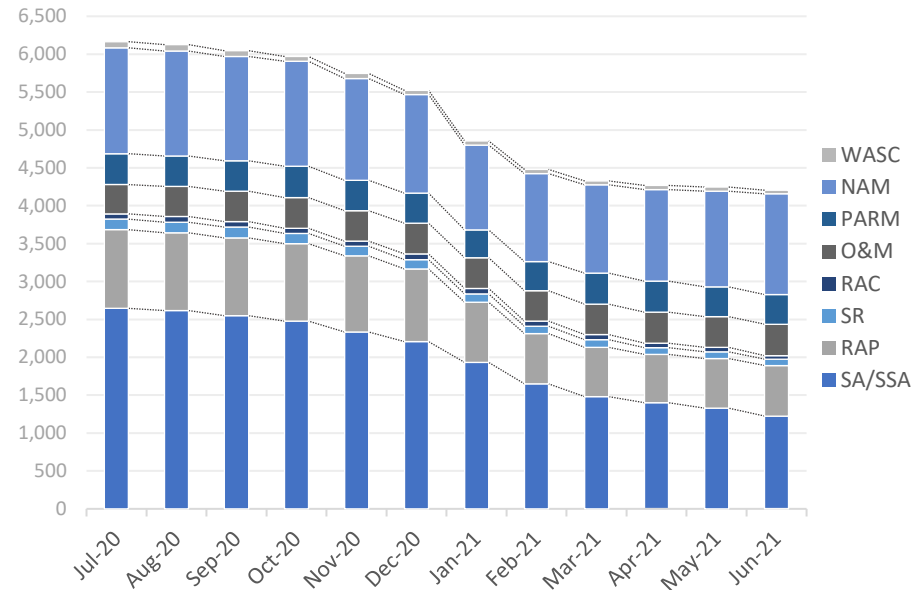
type	closures	% of total

## Discharge Closures by Fiscal Year

as of June 30, 2021

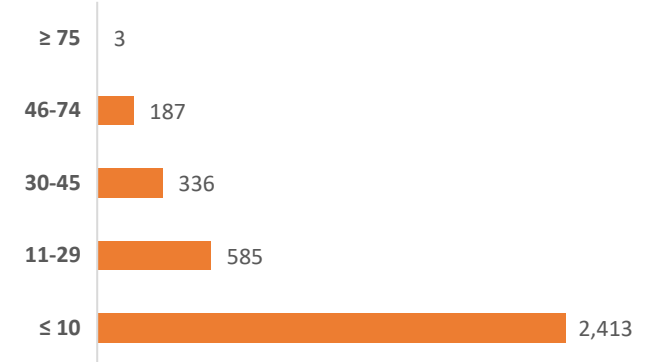


## Monthly Snapshot of Active Discharge Sub-Phases



Sub-Phase	Jul-20	Aug-20	Sep-20	Oct-20	Nov-20	Dec-20	Jan-21	Feb-21	Mar-21	Apr-21	May-21	Jun-21
Site Assessment/Supplemental (SA/SSA)	2,646	2,618	2,549	2,478	2,334	2,206	1,932	1,649	1,481	1,401	1,329	1,225
Remedial Action Plan (RAP)	1,038	1,025	1,026	1,022	1,005	961	795	662	651	636	656	667
Source Removal (SR)	139	141	142	133	128	122	110	99	101	91	86	84
Remedial Action Construction (RAC)	70	74	74	71	67	74	72	69	67	57	59	46
Operation & Maintenance (O&M)	386	396	400	405	400	405	403	400	401	412	407	415
Post Active Remedial Monitoring (PARM)	408	402	403	413	402	397	371	383	410	409	394	391
Natural Attenuation Monitoring (NAM)	1,397	1,385	1,375	1,385	1,343	1,301	1,119	1,162	1,164	1,208	1,263	1,329
Well Abandonment/SRCO (WASC)	81	86	77	63	65	55	55	54	50	53	53	48

## Current Inactive Discharge Scores

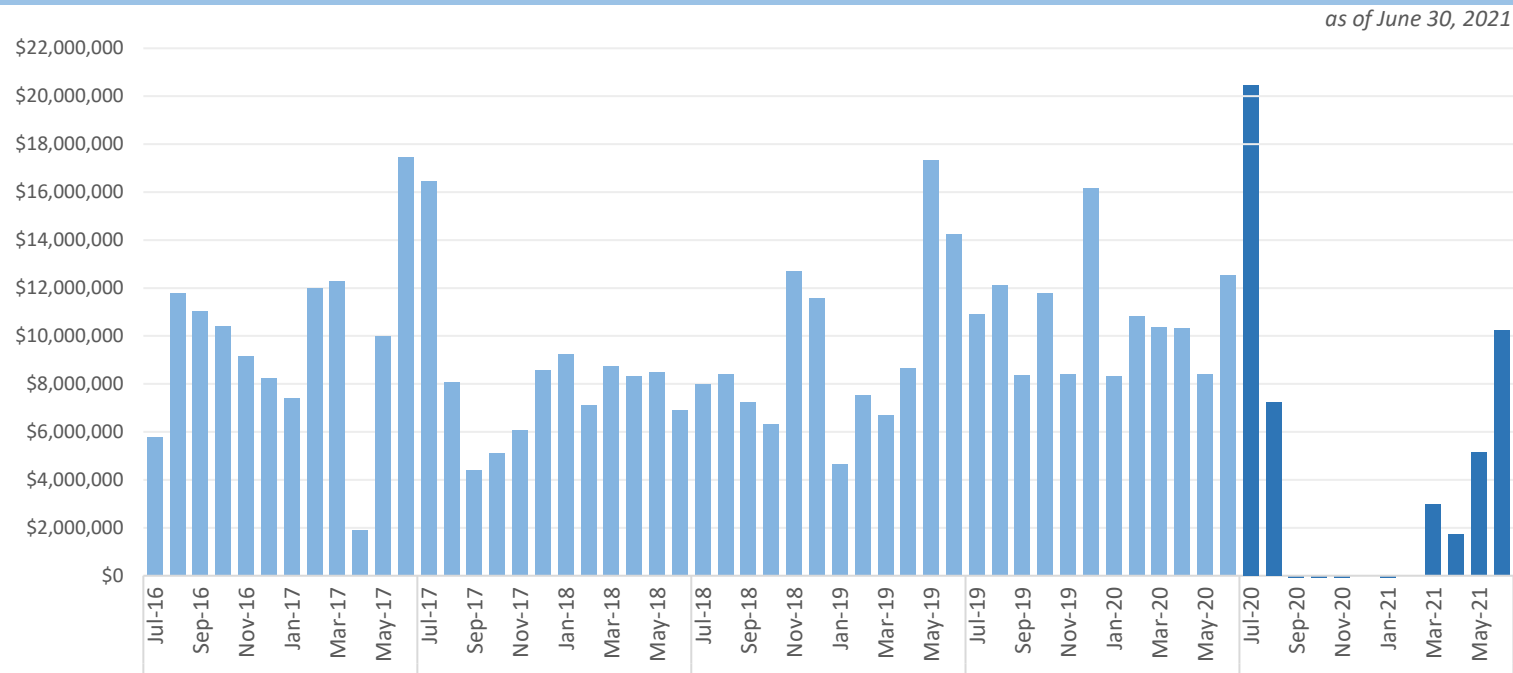


Note: The current Priority Score Funding Threshold is 11.

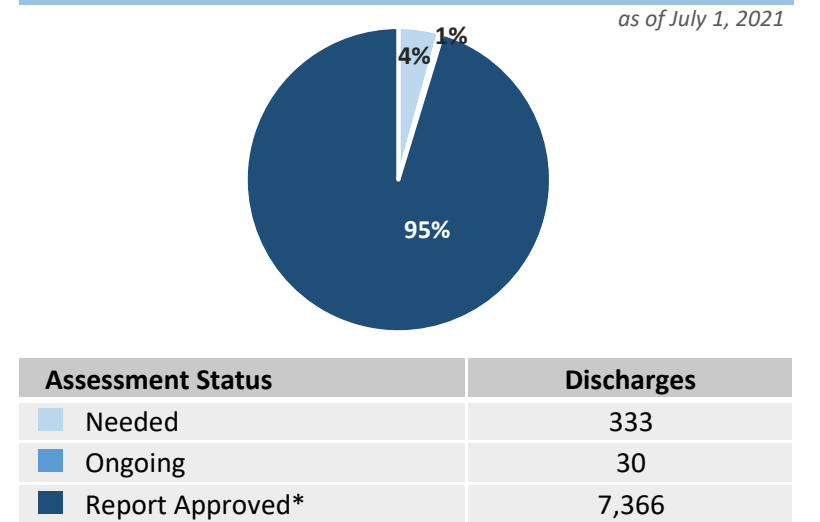
\* The count of 'Active' discharges includes 19 eligible discharges currently managed by Districts.

# Encumbrances, Assignments, & Assessments

## Monthly Net Encumbrance Amounts (FY 2016-17 thru present)

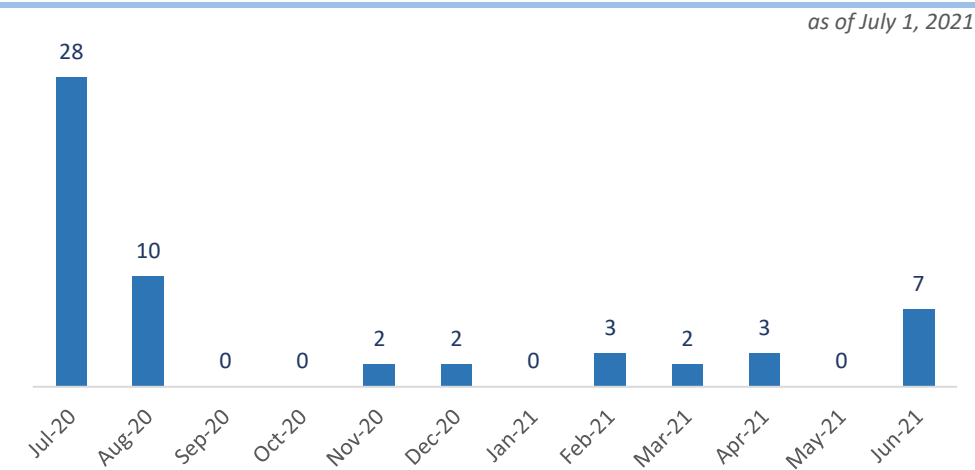


## Current Eligible Discharge Assessment Statuses

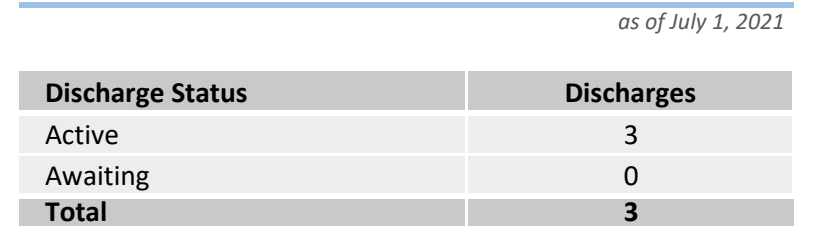


\* Does not include 11,800 completed discharges.

## CSF Assignments by Month



## Open Eligible Discharges with Cap Exhausted



# Encumbrance Activity

as of June 30, 2021

## FY 2020-21 Encumbrances by Month

Month	WO/PO Encumbered	*Net Encumbered
July 2020 <sup>†</sup>	\$ 11,813,915	\$ 20,444,849
August 2020	\$ 10,454,498	\$ 7,254,320
September 2020	\$ 2,524,065	\$ (2,970,265)
October 2020 <sup>†</sup>	\$ 3,099,629	\$ (2,313,074)
November 2020 <sup>†</sup>	\$ 1,867,006	\$ (1,520,989)
December 2020	\$ 3,072,783	\$ 26,783
January 2021	\$ 1,919,015	\$ (1,576,687)
February 2021	\$ 3,155,368	\$ 40,415
March 2021	\$ 6,212,050	\$ 2,968,332
April 2021	\$ 4,199,084	\$ 1,720,409
May 2021	\$ 7,981,843	\$ 5,141,003
June 2021	\$ 12,203,352	\$ 10,242,203
<b>Grand Total</b>	<b>\$ 68,502,609</b>	<b>\$ 39,457,300</b>

<sup>†</sup> Adjustments required due to audit of FY20-21 obligations to date.

## Total Encumbered by Fiscal Year Allocation

Fiscal Year	FCO Appropriation	**Total Encumbered	Appropriation Balance
Carry-Over	\$ 4,530,701	\$ 4,530,701	\$ 0
FY 2020-21	\$ 115,000,000	\$ 35,671,870	\$ 79,328,130

\* Includes WOs, POs, COs, Utilities & Adjustments.

\*\* Monthly Net Results totals are calculated from PO/WOs sent to F&A; Total Encumbered by Fiscal Year is calculated from all encumbered in STCM.

## FY 2020-21 Fiscal Activity by Phase

Phase	June 2021		FY to Date	
	Count	Amount	Count	Amount
Low Score Site Initiative	11	\$ 111,687	202	\$ 2,164,479
Site Assessment (incl. LSA)	31	\$ 1,104,088	211	\$ 6,823,044
Source Removal (incl. FPR)	3	\$ 819,525	23	\$ 5,925,494
Remedial Action Plan (incl. Pilot Test)	63	\$ 1,520,178	424	\$ 6,209,344
Remedial Action Construction	9	\$ 2,002,145	50	\$ 7,054,614
Operation & Maintenance	48	\$ 4,956,476	374	\$ 29,725,529
Post Active Remedial Monitoring	26	\$ 384,717	180	\$ 2,127,017
Natural Attenuation Monitoring	121	\$ 1,239,338	796	\$ 6,420,228
Well Abandonment/SRCO	10	\$ 65,199	222	\$ 2,052,860
<b>Sub Total</b>	<b>322</b>	<b>\$ 12,203,352</b>	<b>2,482</b>	<b>\$ 68,502,609</b>

Note: Well Abandonment includes POs for Verification for Well Abandonment. LSSI Obligations are reflected only after signed and returned from Contractor and include costs for Well Abandonment Activities under LSSI Cleanup.

## FY 2020-21 Net Fiscal Activity

Activity	June 2021	FY to Date
Purchase/Work Orders	\$ 12,203,352	\$ 68,502,609
Change Orders & Adjustments	\$ (2,349,940)	\$ (32,360,772)
Utilities	\$ 388,791	\$ 3,315,463
<b>Total**</b>	<b>\$ 10,242,203</b>	<b>\$ 39,457,300</b>