

Current Eligible Discharge Statuses

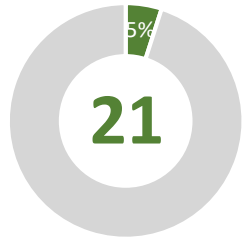
as of August 2, 2020



0% 3% 5% 8% 10% 13% 15% 18% 20% 23% 25% 28% 30% 33% 35% 38% 40% 43% 45% 48% 50% 53% 55% 58% 60% 63% 65% 68% 70% 73% 75% 78% 80% 83% 85% 88% 90% 93% 95% 98% 100%

FY 2020-21 Discharges Closed to Date

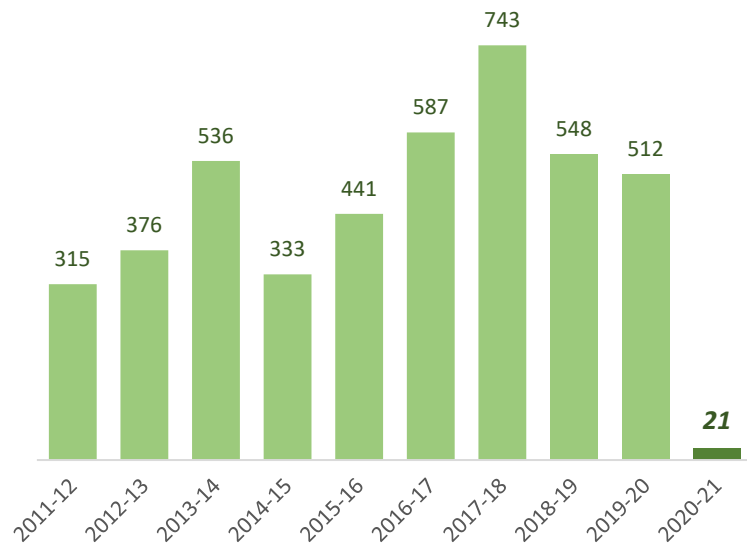
Total Closed to Date:



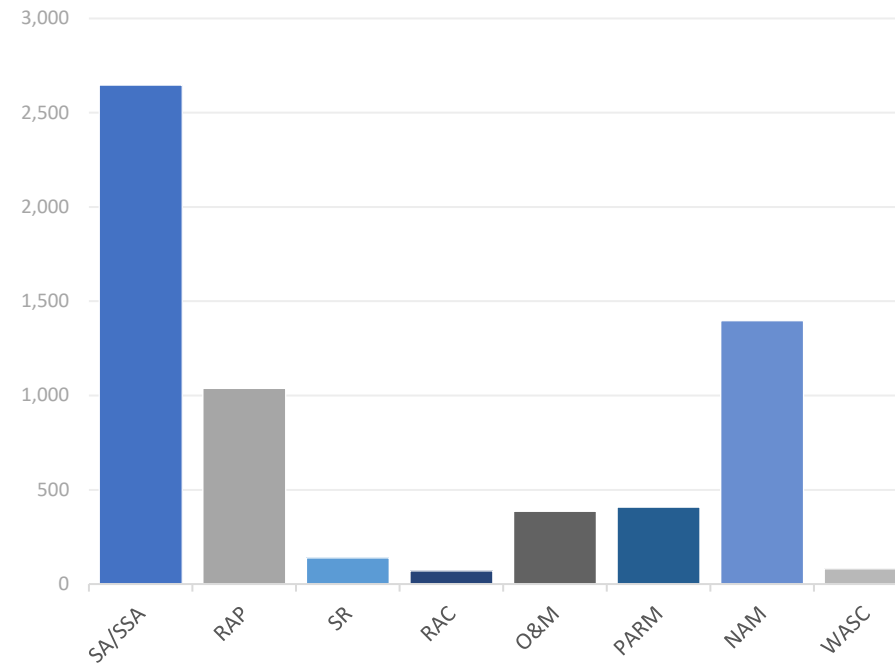
of 425
projected closures

type	closures	% of total
LNFA	3	14%
NFA/SRSCO	18	86%
NFAC	0	0%
NREQ	0	0%

Discharge Closures by Fiscal Year

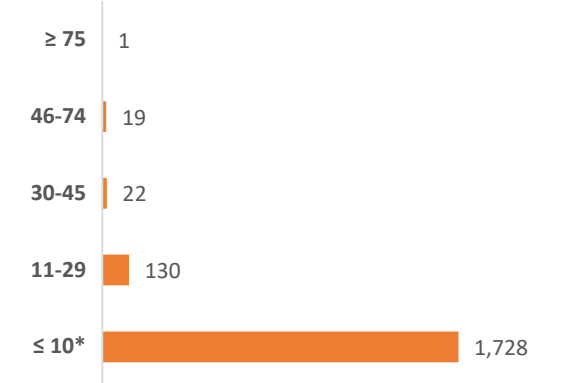


Monthly Snapshot of Active Discharge Sub-Phases



Sub-Phase	Jul-20	Aug-20	Sep-20	Oct-20	Nov-20	Dec-20	Jan-21	Feb-21	Mar-21	Apr-21	May-21	Jun-21
Site Assessment/Supplemental (SA/SSA)	2,646											
Remedial Action Plan (RAP)	1,038											
Source Removal (SR)	139											
Remedial Action Construction (RAC)	70											
Operation & Maintenance (O&M)	386											
Post Active Remedial Monitoring (PARM)	408											
Natural Attenuation Monitoring (NAM)	1,397											
Well Abandonment/SRSCO (WASC)	81											

Current Inactive Discharge Scores

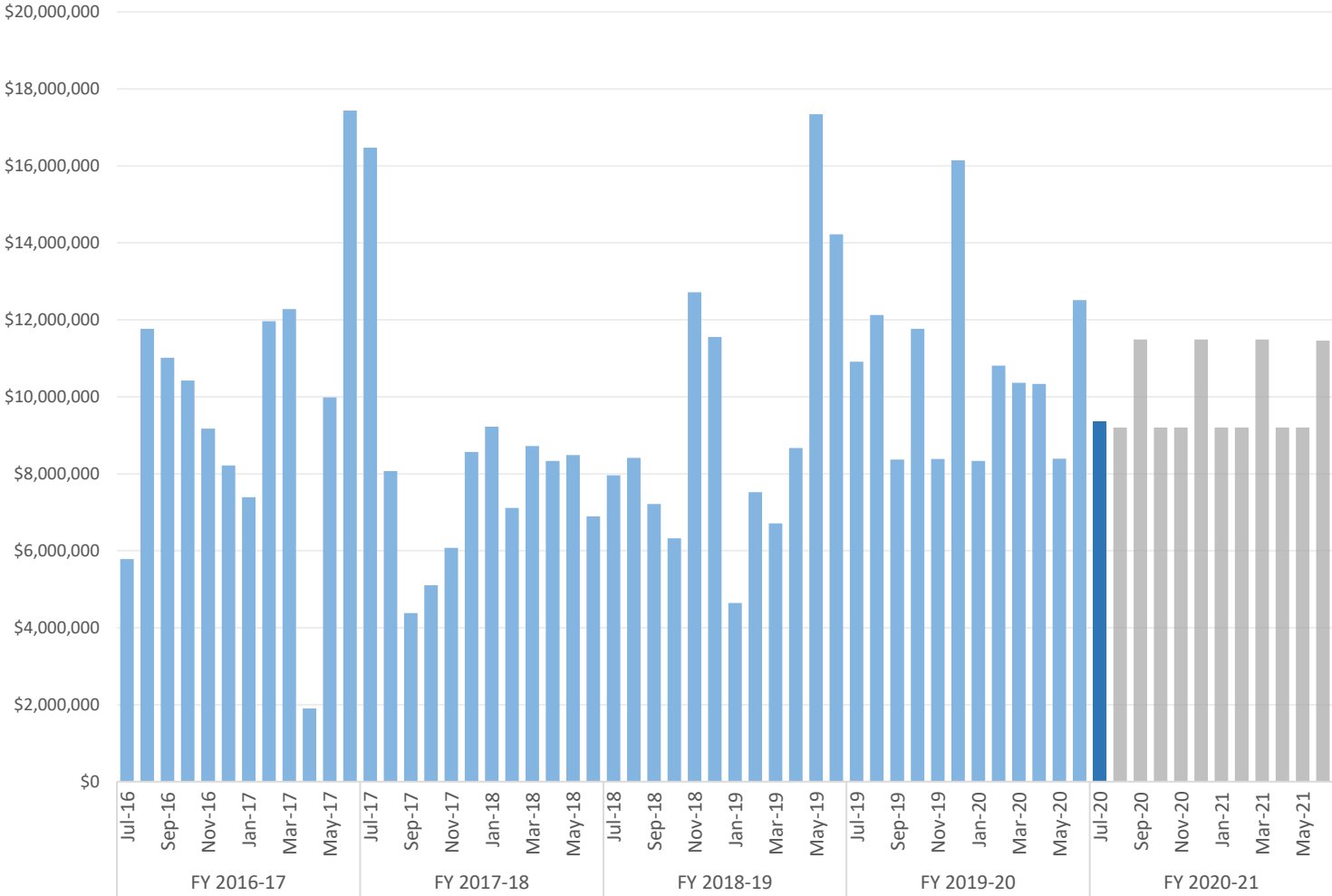


* The current Priority Score Funding Threshold is 11.

Encumbrances, Assignments, & Assessments

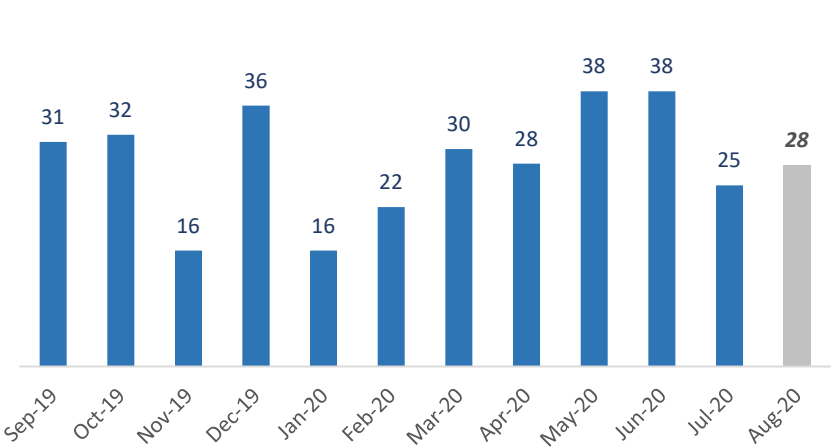
Monthly Net Encumbrance Amounts (with FY 20-21 projections)

as of July 29, 2020



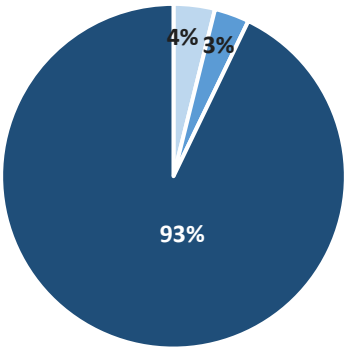
CSF Assignments by Month (with 1-month projection)

as of August 2, 2020



Current Eligible Discharge Assessment Statuses

as of August 2, 2020



Assessment Status	Discharges
Needed	313
Ongoing	264
Report Approved*	7,488

* Does not include 11,396 completed discharges.

Encumbrance Activity

as of July 29, 2020

FY 2020-21 Encumbrances by Month

Month	Available Funds	FY Projection	Encumbered	*Net Encumbered	Net Percent of Projection
July 2020	\$ 10,000,000	\$ 9,200,100	\$ 11,813,915	\$ 9,359,728	102%
August 2020	\$ 10,000,000	\$ 9,200,100	-	-	0%
September 2020	\$ 10,000,000	\$ 11,490,000	-	-	0%
October 2020	\$ 10,000,000	\$ 9,200,100	-	-	0%
November 2020	\$ 10,000,000	\$ 9,200,100	-	-	0%
December 2020	\$ 10,000,000	\$ 11,490,000	-	-	0%
January 2021	\$ 10,000,000	\$ 9,200,100	-	-	0%
February 2021	\$ 10,000,000	\$ 9,200,100	-	-	0%
March 2021	\$ 10,000,000	\$ 11,490,000	-	-	0%
April 2021	\$ 10,000,000	\$ 9,200,100	-	-	0%
May 2021	\$ 10,000,000	\$ 9,200,000	-	-	0%
June 2021	\$ 9,530,701	\$ 11,460,000	-	-	0%
Grand Total	\$ 119,530,701	\$ 119,530,700	\$ 11,813,915	\$ 9,359,728	8%

FY 2020-21 Fiscal Activity by Phase

Phase	July 2020		FY to Date	
	Count	Amount	Count	Amount
Low Score Site Initiative	25	\$ 450,879	25	\$ 450,879
Site Assessment <i>(incl. LSA)</i>	64	\$ 2,083,017	64	\$ 2,083,017
Source Removal <i>(incl. FPR)</i>	7	\$ 3,281,610	7	\$ 3,281,610
Remedial Action Plan <i>(incl. Pilot Test)</i>	26	\$ 459,515	26	\$ 459,515
Remedial Action Construction	15	\$ 1,845,506	15	\$ 1,845,506
Operation & Maintenance	26	\$ 2,849,667	26	\$ 2,849,667
Post Active Remedial Monitoring	6	\$ 121,192	6	\$ 121,192
Natural Attenuation Monitoring	43	\$ 574,905	43	\$ 574,905
Well Abandonment/SRCO	18	\$ 147,623	18	\$ 147,623
Sub Total	230	\$ 11,813,915	230	\$ 11,813,915

Total Encumbered by Fiscal Year Allocation

Fiscal Year	FCO Appropriation	**Total Encumbered	Appropriation Balance
FY 2019-20 <i>(carry over)</i>	\$ 4,530,701	\$ 4,530,701	\$ 0
FY 2020-21	\$ 115,000,000	\$ 5,442,434	\$ 109,557,566

FY 2020-21 Net Fiscal Activity

Activity	July 2020	FY to Date
Purchase/Work Orders	\$ 11,813,915	\$ 11,813,915
Change Orders & Adjustments	\$ (2,670,830)	\$ (2,670,830)
Utilities	\$ 216,643	\$ 216,643
Total**	\$ 9,359,728	\$ 9,359,728

* Includes WOs, POs, COs, Utilities & Adjustments.

** Monthly Net Results totals are calculated from PO/WOs sent to F&A; Total Encumbered by Fiscal Year is calculated from all encumbered in STCM.