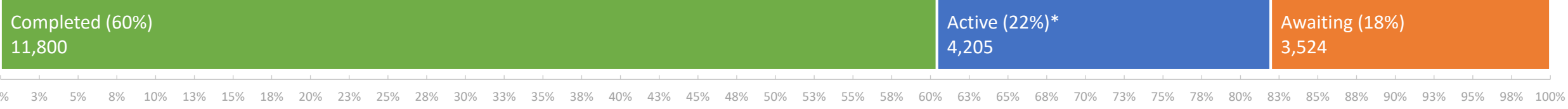


Current Eligible Discharge Statuses

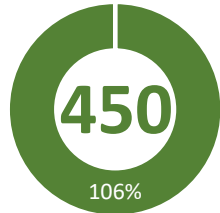
as of July 1, 2021



FY 2020-21 Discharges Closed to Date

as of June 30, 2021

Total Closed to Date:

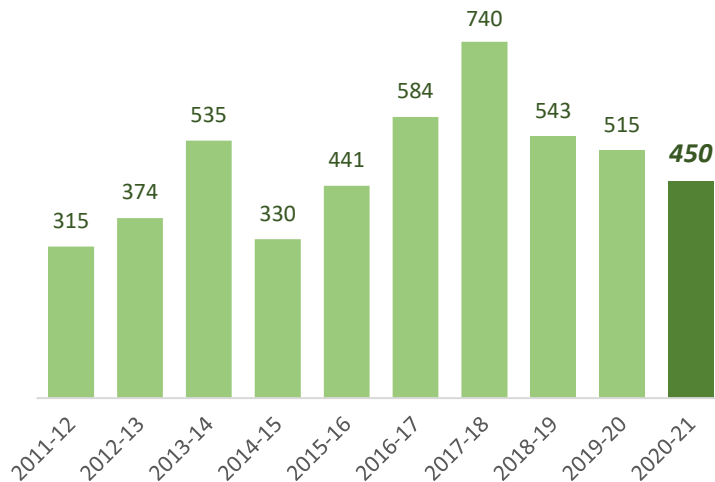


of 425
projected closures

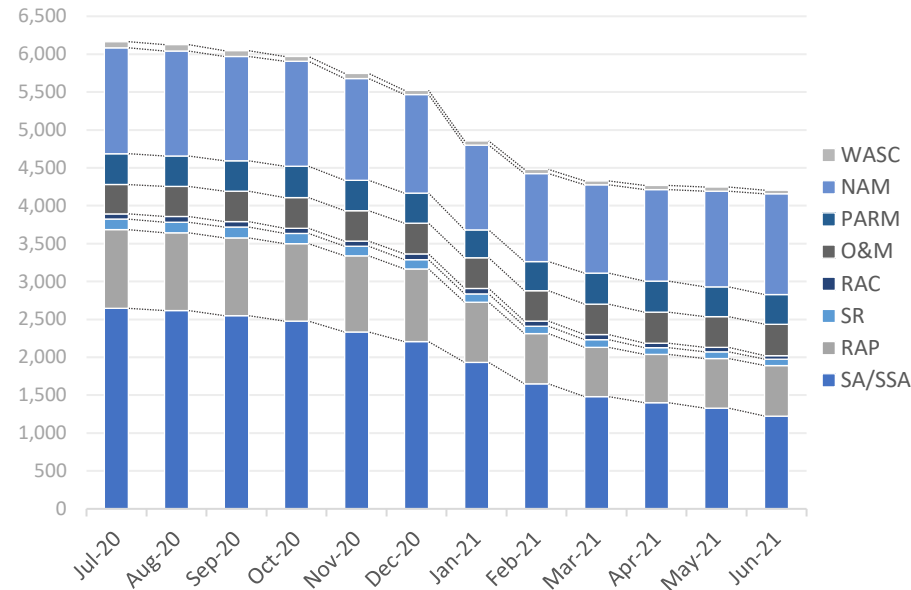
type	closures	% of total
LNFA	35	8%
NFA/SRSCO	403	90%
NFAC	12	3%
NREQ	0	0%

Discharge Closures by Fiscal Year

as of June 30, 2021

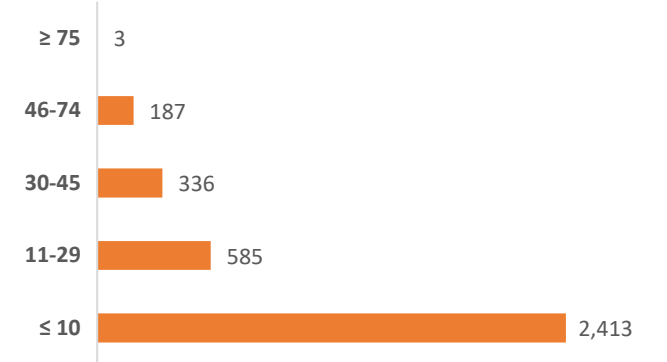


Monthly Snapshot of Active Discharge Sub-Phases



Sub-Phase	Jul-20	Aug-20	Sep-20	Oct-20	Nov-20	Dec-20	Jan-21	Feb-21	Mar-21	Apr-21	May-21	Jun-21
Site Assessment/Supplemental (SA/SSA)	2,646	2,618	2,549	2,478	2,334	2,206	1,932	1,649	1,481	1,401	1,329	1,225
Remedial Action Plan (RAP)	1,038	1,025	1,026	1,022	1,005	961	795	662	651	636	656	667
Source Removal (SR)	139	141	142	133	128	122	110	99	101	91	86	84
Remedial Action Construction (RAC)	70	74	74	71	67	74	72	69	67	57	59	46
Operation & Maintenance (O&M)	386	396	400	405	400	405	403	400	401	412	407	415
Post Active Remedial Monitoring (PARM)	408	402	403	413	402	397	371	383	410	409	394	391
Natural Attenuation Monitoring (NAM)	1,397	1,385	1,375	1,385	1,343	1,301	1,119	1,162	1,164	1,208	1,263	1,329
Well Abandonment/SRSCO (WASC)	81	86	77	63	65	55	55	54	50	53	53	48

Current Inactive Discharge Scores

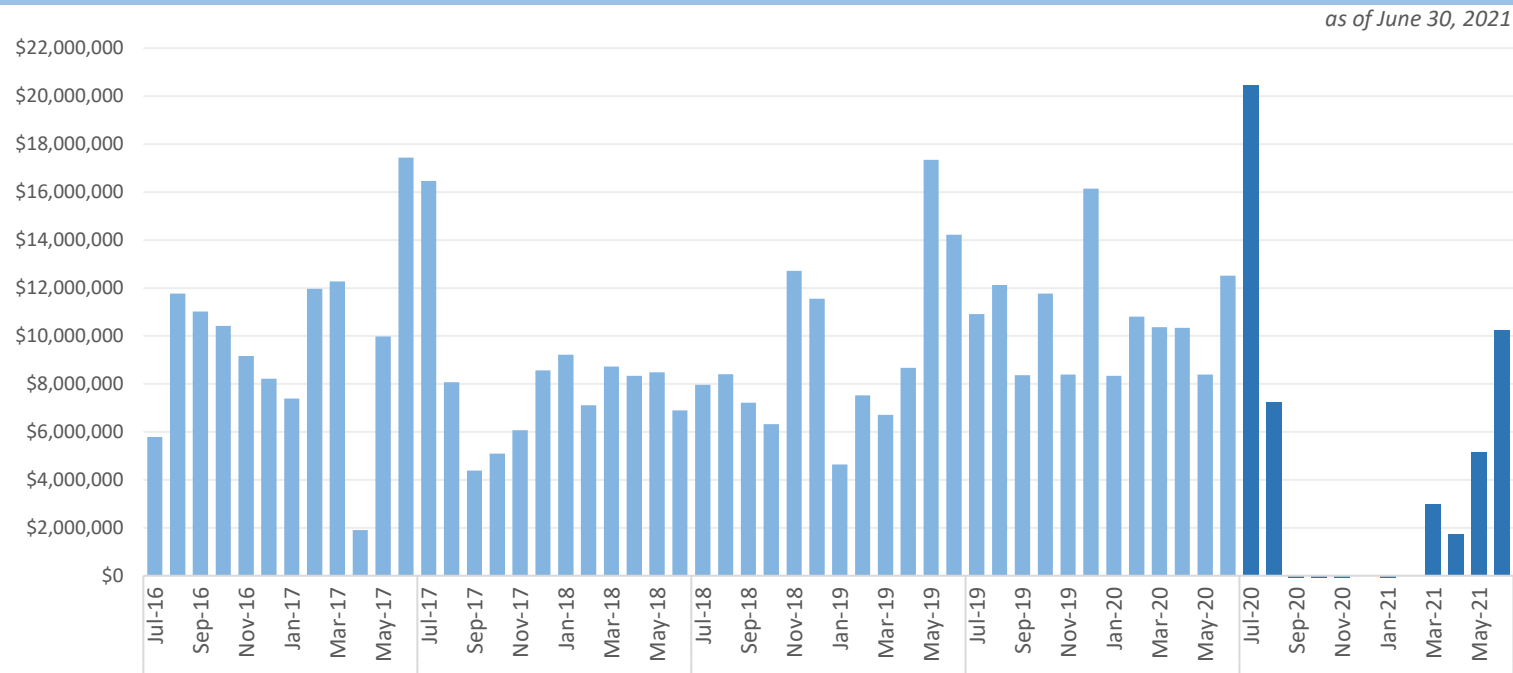


Note: The current Priority Score Funding Threshold is 11.

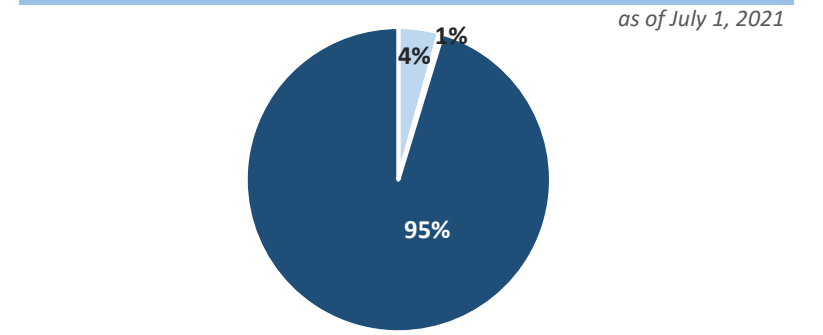
* The count of 'Active' discharges includes 19 eligible discharges currently managed by Districts.

Encumbrances, Assignments, & Assessments

Monthly Net Encumbrance Amounts (FY 2016-17 thru present)



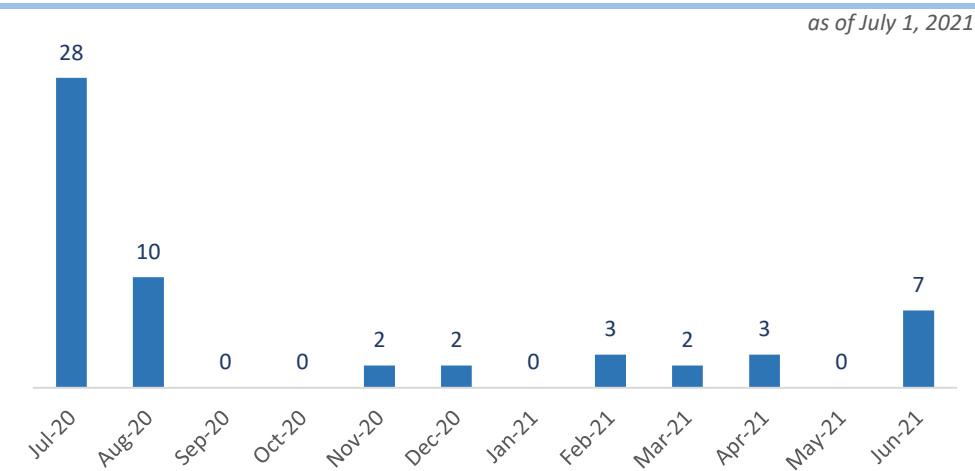
Current Eligible Discharge Assessment Statuses



Assessment Status	Discharges
Needed	333
Ongoing	30
Report Approved*	7,366

* Does not include 11,800 completed discharges.

CSF Assignments by Month



Open Eligible Discharges with Cap Exhausted

as of July 1, 2021

Discharge Status	Discharges
Active	3
Awaiting	0
Total	3

Encumbrance Activity

as of June 30, 2021

FY 2020-21 Encumbrances by Month

Month	WO/PO Encumbered	*Net Encumbered
July 2020 [†]	\$ 11,813,915	\$ 20,444,849
August 2020	\$ 10,454,498	\$ 7,254,320
September 2020	\$ 2,524,065	\$ (2,970,265)
October 2020 [†]	\$ 3,099,629	\$ (2,313,074)
November 2020 [†]	\$ 1,867,006	\$ (1,520,989)
December 2020	\$ 3,072,783	\$ 26,783
January 2021	\$ 1,919,015	\$ (1,576,687)
February 2021	\$ 3,155,368	\$ 40,415
March 2021	\$ 6,212,050	\$ 2,968,332
April 2021	\$ 4,199,084	\$ 1,720,409
May 2021	\$ 7,981,843	\$ 5,141,003
June 2021	\$ 12,203,352	\$ 10,242,203
Grand Total	\$ 68,502,609	\$ 39,457,300

[†] Adjustments required due to audit of FY20-21 obligations to date.

Total Encumbered by Fiscal Year Allocation

Fiscal Year	FCO Appropriation	**Total Encumbered	Appropriation Balance
Carry-Over	\$ 4,530,701	\$ 4,530,701	\$ 0
FY 2020-21	\$ 115,000,000	\$ 35,671,870	\$ 79,328,130

* Includes WOs, POs, COs, Utilities & Adjustments.

** Monthly Net Results totals are calculated from PO/WOs sent to F&A; Total Encumbered by Fiscal Year is calculated from all encumbered in STCM.

FY 2020-21 Fiscal Activity by Phase

Phase	June 2021		FY to Date	
	Count	Amount	Count	Amount
Low Score Site Initiative	11	\$ 111,687	202	\$ 2,164,479
Site Assessment (incl. LSA)	31	\$ 1,104,088	211	\$ 6,823,044
Source Removal (incl. FPR)	3	\$ 819,525	23	\$ 5,925,494
Remedial Action Plan (incl. Pilot Test)	63	\$ 1,520,178	424	\$ 6,209,344
Remedial Action Construction	9	\$ 2,002,145	50	\$ 7,054,614
Operation & Maintenance	48	\$ 4,956,476	374	\$ 29,725,529
Post Active Remedial Monitoring	26	\$ 384,717	180	\$ 2,127,017
Natural Attenuation Monitoring	121	\$ 1,239,338	796	\$ 6,420,228
Well Abandonment/SRCO	10	\$ 65,199	222	\$ 2,052,860
Sub Total	322	\$ 12,203,352	2,482	\$ 68,502,609

Note: Well Abandonment includes POs for Verification for Well Abandonment. LSSI Obligations are reflected only after signed and returned from Contractor and include costs for Well Abandonment Activities under LSSI Cleanup.

FY 2020-21 Net Fiscal Activity

Activity	June 2021	FY to Date
Purchase/Work Orders	\$ 12,203,352	\$ 68,502,609
Change Orders & Adjustments	\$ (2,349,940)	\$ (32,360,772)
Utilities	\$ 388,791	\$ 3,315,463
Total**	\$ 10,242,203	\$ 39,457,300