

Current Eligible Discharge Statuses

as of May 31, 2019

Completed (56%)
10,804

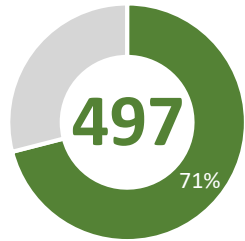
Active (31%)
6,072

Awaiting (13%)
2,501



FY 2018-19 Discharges Closed to Date

Total Closed to Date*:

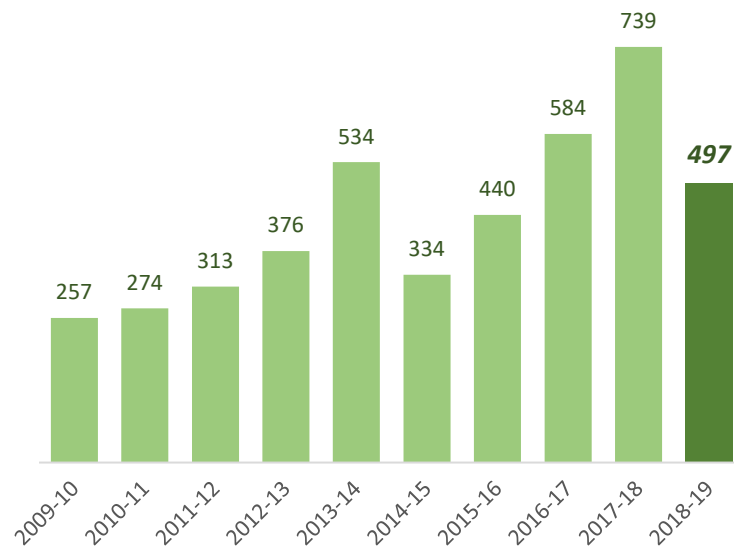


of 700
projected closures

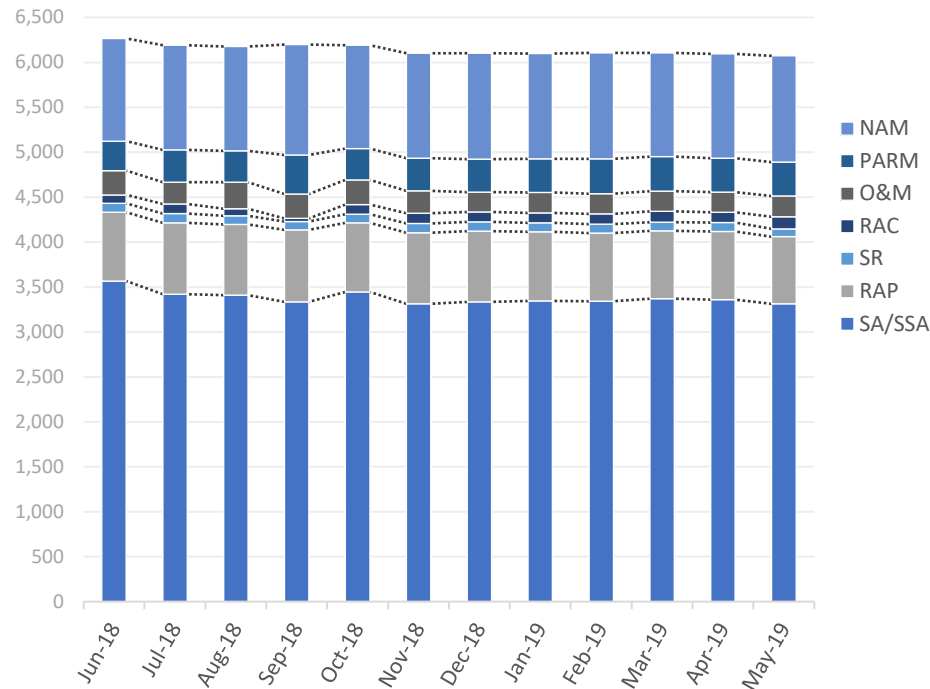
type	closures	% of total
LNFA	41	8%
NFA/SRCO	441	89%
NFAC	10	2%
NREQ	5	1%

*46 additional discharges achieved cleanup status and are awaiting deductible payment

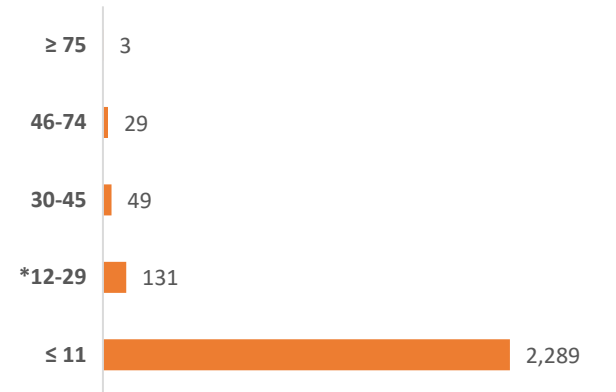
Discharge Closures by Fiscal Year



Monthly Snapshot of Active Discharge Sub-Phases



Current Inactive Discharge Scores



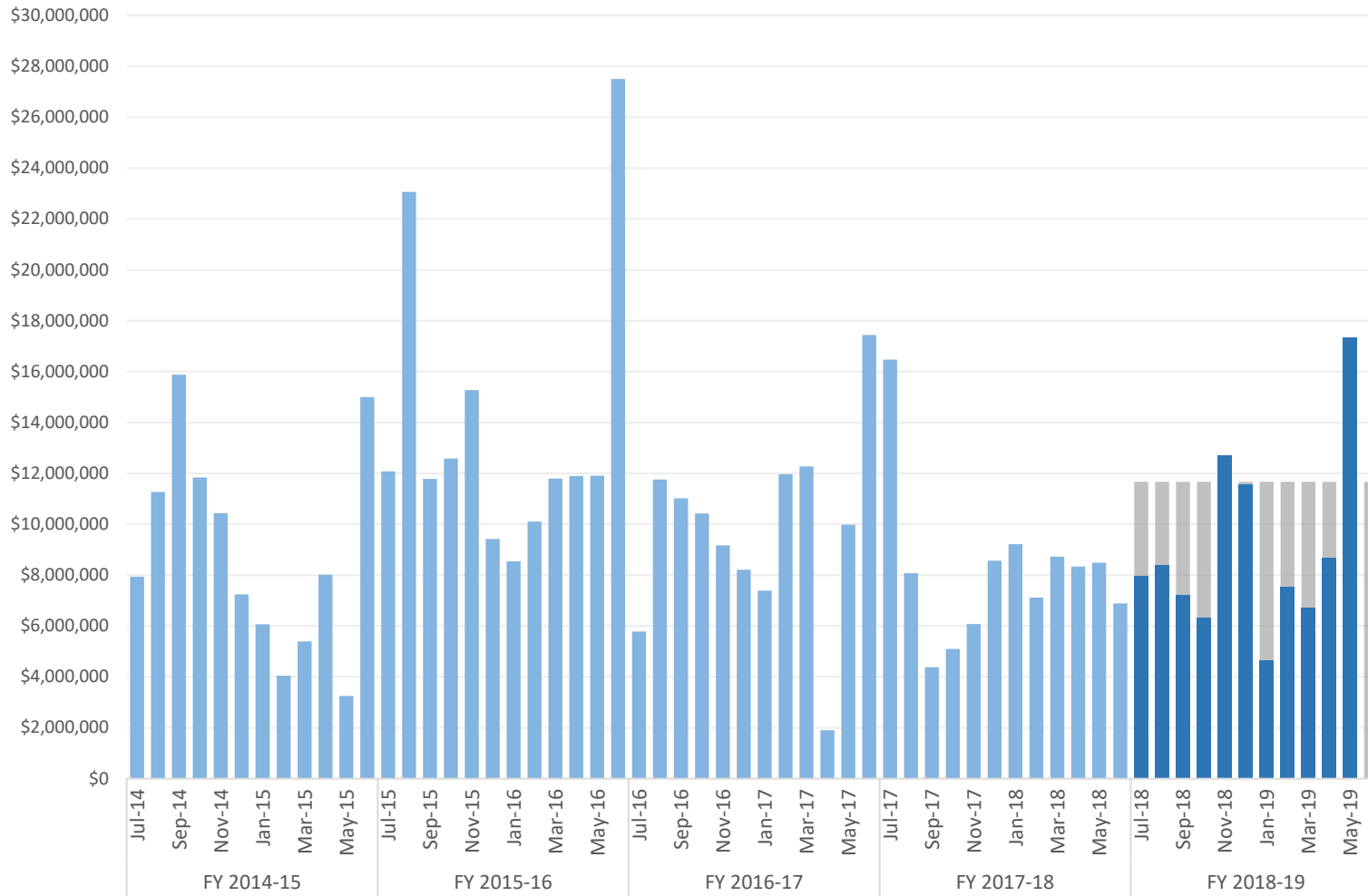
* The current Priority Score Funding Threshold is 12.

Sub-Phase	Jun-18	Jul-18	Aug-18	Sep-18	Oct-18	Nov-18	Dec-18	Jan-19	Feb-19	Mar-19	Apr-19	May-19
Site Assessment/Supplemental (SA/SSA)	3,567	3,420	3,409	3,335	3,445	3,315	3,335	3,346	3,341	3,370	3,361	3,313
Remedial Action Plan (RAP)	765	794	788	802	770	790	787	768	760	757	758	747
Source Removal (SR)	99	104	95	90	96	101	104	101	98	94	98	88
Remedial Action Construction (RAC)	95	106	80	36	108	115	110	109	116	121	116	133
Operation & Maintenance (O&M)	270	244	295	272	271	249	221	227	222	224	225	232
Post Active Remedial Monitoring (PARM)	328	358	350	435	351	364	367	377	389	384	376	377
Natural Attenuation Monitoring (NAM)	1,142	1,163	1,160	1,226	1,148	1,167	1,176	1,170	1,179	1,156	1,162	1,182

Encumbrances, Assignments, & Assessments

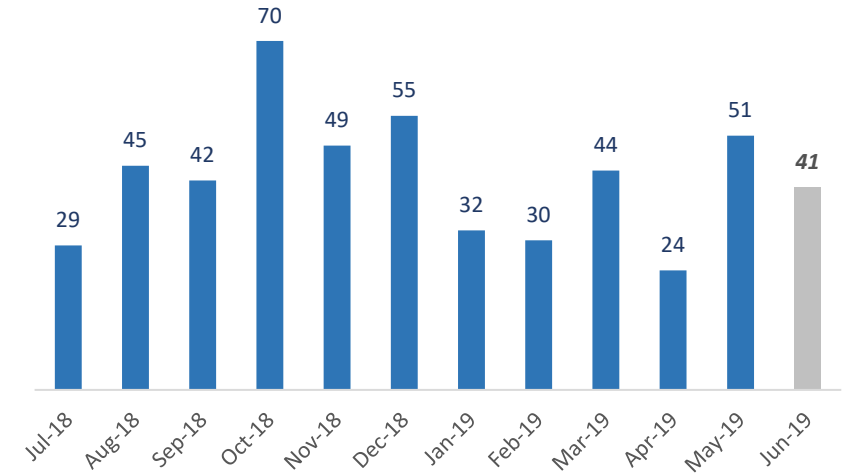
Monthly Net Encumbrance Amounts *(with FY 18-19 projections)*

as of May 29, 2019



CSF Assignments by Month *(with 1-month projection)*

as of May 31, 2019



FY 18-19 New Assessments by Month

as of May 31, 2019

Month	Number of New Assessments
July 2018	40
August 2018	38
September 2018	51
October 2018	39
November 2018	57
December 2018	41
January 2019	45
February 2019	53
March 2019	46
April 2019	68
May 2019	70
June 2019	
Total	548

Encumbrance Activity

as of May 29, 2019

FY 2018-19 Encumbrances by Month

Month	FY Projection	Encumbered	*Net Encumbered	Net Percentage
July 2018	\$ 11,667,750	\$ 9,244,371	\$ 7,961,274	68%
August 2018	\$ 11,667,750	\$ 10,471,706	\$ 8,410,410	72%
September 2018	\$ 11,667,750	\$ 9,534,673	\$ 7,212,771	62%
October 2018	\$ 11,667,750	\$ 10,005,636	\$ 6,322,746	54%
November 2018	\$ 11,667,750	\$ 12,081,739	\$ 12,716,100	109%
December 2018	\$ 11,667,750	\$ 10,828,281	\$ 11,554,678	99%
January 2019	\$ 11,667,750	\$ 10,156,061	\$ 4,641,280	40%
February 2019	\$ 11,667,750	\$ 9,083,540	\$ 7,523,416	64%
March 2019	\$ 11,667,750	\$ 8,498,409	\$ 6,707,758	57%
April 2019	\$ 11,667,750	\$ 9,460,873	\$ 8,668,608	74%
May 2019	\$ 11,667,750	\$ 14,272,411	\$ 17,343,695	149%
June 2019	\$ 11,667,248	-	-	0%
Grand Total	\$ 140,012,498	\$ 113,637,699	\$ 99,062,736	71%

FY 2018-19 Fiscal Activity by Phase

Phase	May 2019		FY to Date	
	Count	Amount	Count	Amount
Low Score Site Initiative	69	\$ 1,225,411	586	\$ 9,707,232
Site Assessment <i>(including LSA)</i>	136	\$ 4,637,519	931	\$ 33,126,694
Source Removal <i>(including FPR)</i>	10	\$ 1,933,924	77	\$ 16,650,971
Remedial Action Plan <i>(including Pilot Test)</i>	48	\$ 1,302,131	388	\$ 9,072,198
Remedial Action Construction	17	\$ 2,591,871	134	\$ 20,498,761
Operation & Maintenance	17	\$ 1,277,640	136	\$ 12,356,911
Post Active Remedial Monitoring	12	\$ 398,158	118	\$ 3,472,311
Natural Attenuation Monitoring	58	\$ 761,646	549	\$ 6,703,087
Well Abandonment/SRCO	13	\$ 144,109	149	\$ 2,049,533
Sub Total	380	\$ 14,272,411	3,068	\$ 113,637,699

Total Encumbered by Fiscal Year Allocation

Fiscal Year	FCO Appropriation	**Total Encumbered	Appropriation Balance
FY 2017-18 <i>(carry over)</i>	\$ 30,012,498	\$ 30,012,498	\$ 0
FY 2018-19	\$ 110,000,000	\$ 73,418,454	\$ 36,581,546

FY 2018-19 Net Fiscal Activity

Activity	May 2019	FY to Date
Purchase/Work Orders	\$ 14,272,411	\$ 113,637,699
STCM Change Orders & Adjustments	\$ 2,829,382	\$ (16,882,766)
Utilities	\$ 241,902	\$ 2,307,803
Total**	\$ 17,343,695	\$ 99,062,736

* Includes WOs, POs, COs, Utilities & Adjustments.

** Monthly Net Results totals are calculated from PO/WOs sent to F&A; Total Encumbered by Fiscal Year is calculated from all encumbered in STCM.