

Current Eligible Discharge Statuses

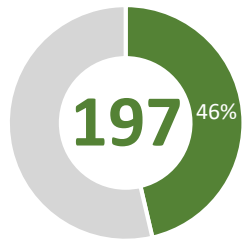
as of November 30, 2020



0% 3% 5% 8% 10% 13% 15% 18% 20% 23% 25% 28% 30% 33% 35% 38% 40% 43% 45% 48% 50% 53% 55% 58% 60% 63% 65% 68% 70% 73% 75% 78% 80% 83% 85% 88% 90% 93% 95% 98% 100%

FY 2020-21 Discharges Closed to Date

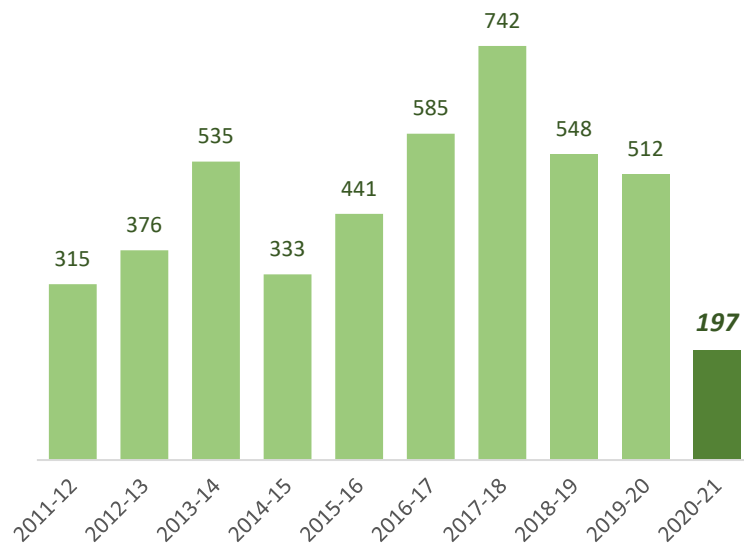
Total Closed to Date:



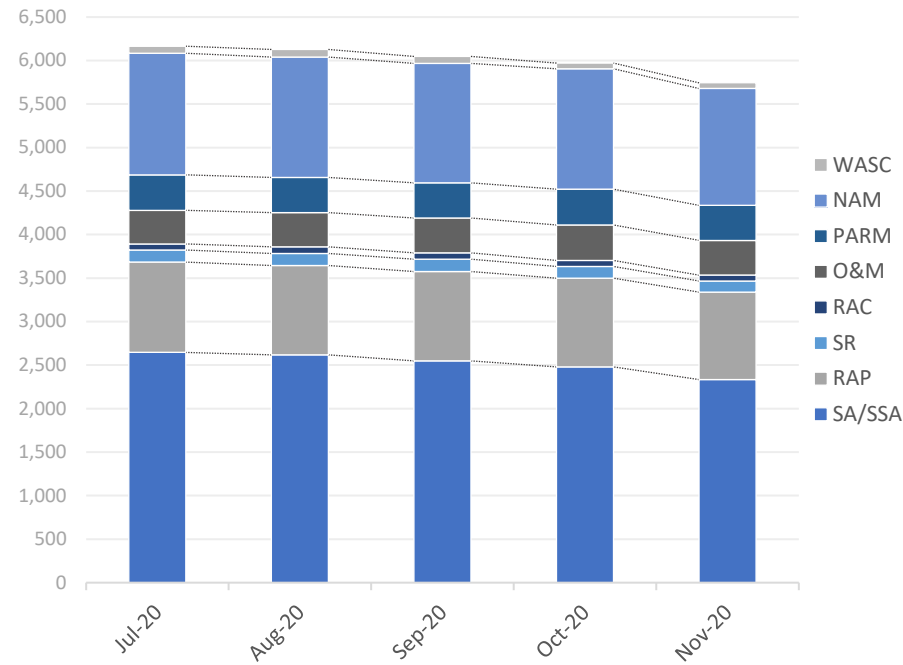
of 425
projected closures

type	closures	% of total
LNFA	11	6%
NFA/SRCO	179	91%
NFAC	7	4%
NREQ	0	0%

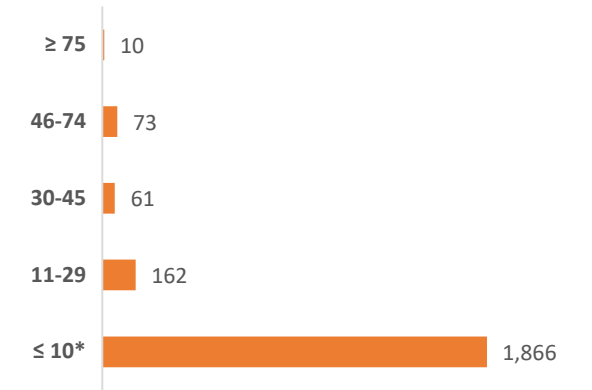
Discharge Closures by Fiscal Year



Monthly Snapshot of Active Discharge Sub-Phases



Current Inactive Discharge Scores



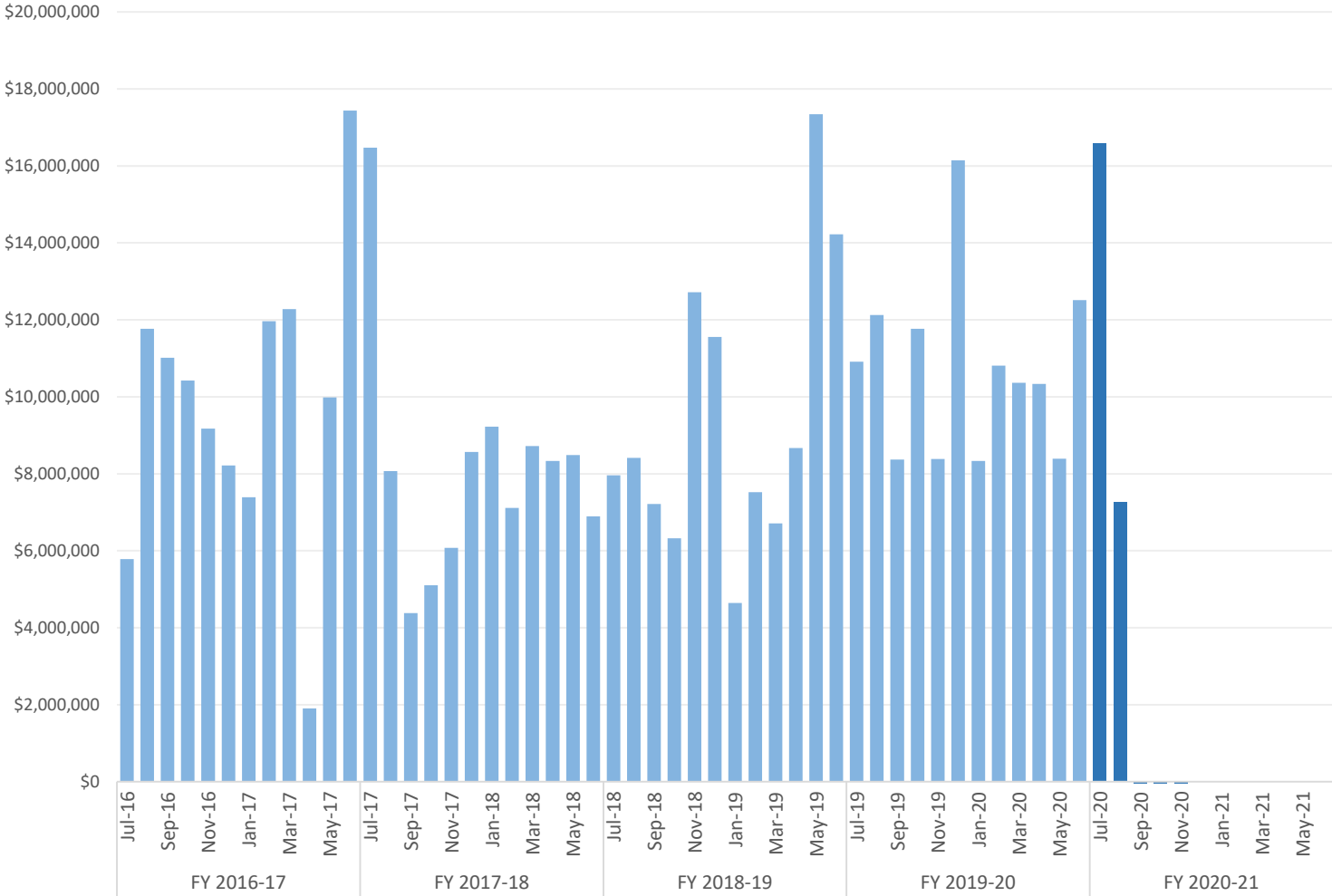
* The current Priority Score Funding Threshold is 11.

Sub-Phase	Jul-20	Aug-20	Sep-20	Oct-20	Nov-20	Dec-20	Jan-21	Feb-21	Mar-21	Apr-21	May-21	Jun-21
Site Assessment/Supplemental (SA/SSA)	2,646	2,618	2,549	2,478	2,334							
Remedial Action Plan (RAP)	1,038	1,025	1,026	1,022	1,005							
Source Removal (SR)	139	141	142	133	128							
Remedial Action Construction (RAC)	70	74	74	71	67							
Operation & Maintenance (O&M)	386	396	400	405	400							
Post Active Remedial Monitoring (PARM)	408	402	403	413	402							
Natural Attenuation Monitoring (NAM)	1,397	1,385	1,375	1,385	1,343							
Well Abandonment/SRCO (WASC)	81	86	77	63	65							

Encumbrances, Assignments, & Assessments

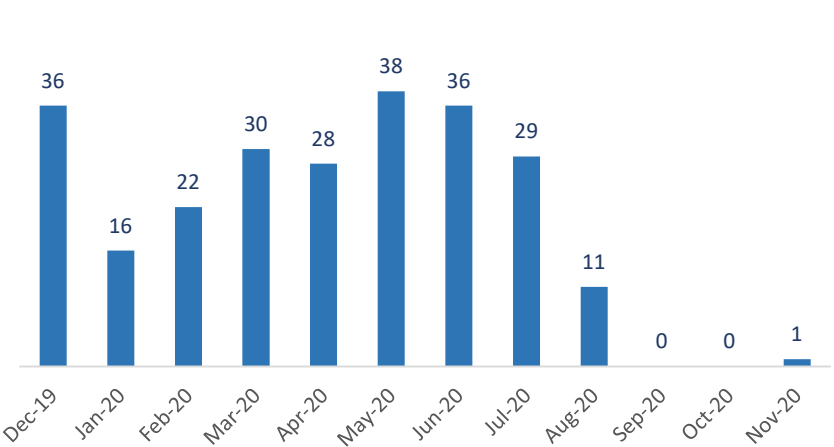
Monthly Net Encumbrance Amounts (FY 2016-17 thru present)

as of November 25, 2020



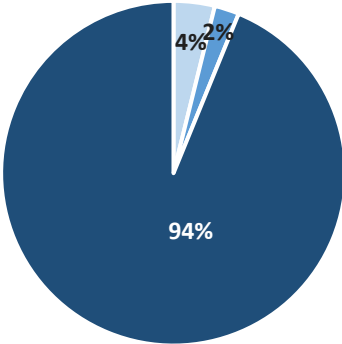
CSF Assignments by Month

as of November 30, 2020



Current Eligible Discharge Assessment Statuses

as of November 30, 2020



Assessment Status	Discharges
Needed	306
Ongoing	183
Report Approved*	7,427

* Does not include 11,567 completed discharges.

Encumbrance Activity

as of November 25, 2020

FY 2020-21 Encumbrances by Month

Month	WO/PO Encumbered	*Net Encumbered
July 2020	\$ 11,813,915	\$ 16,594,721
August 2020	\$ 10,454,498	\$ 7,254,320
September 2020	\$ 2,524,065	\$ (2,970,265)
October 2020	\$ 3,099,629	\$ (6,178,012)
November 2020	\$ 1,867,006	\$ (817,684)
December 2020	-	-
January 2021	-	-
February 2021	-	-
March 2021	-	-
April 2021	-	-
May 2021	-	-
June 2021	-	-
Grand Total	\$ 29,759,112	\$ 13,883,080

Total Encumbered by Fiscal Year Allocation

Fiscal Year	FCO Appropriation	**Total Encumbered	Appropriation Balance
Carry-Over	\$ 4,530,701	\$ 4,530,701	\$ 0
FY 2020-21	\$ 115,000,000	\$ 12,852,956	\$ 102,147,044

* Includes WOs, POs, COs, Utilities & Adjustments.

** Monthly Net Results totals are calculated from PO/WOs sent to F&A; Total Encumbered by Fiscal Year is calculated from all encumbered in STCM.

FY 2020-21 Fiscal Activity by Phase

Phase	November 2020		FY to Date	
	Count	Amount	Count	Amount
Low Score Site Initiative	19	\$ 57,133	98	\$ 1,219,752
Site Assessment (incl. LSA)	0	\$ 0	148	\$ 4,841,399
Source Removal (incl. FPR)	1	\$ 43,309	17	\$ 4,849,021
Remedial Action Plan (incl. Pilot Test)	0	\$ 0	60	\$ 1,002,816
Remedial Action Construction	0	\$ 0	34	\$ 4,311,959
Operation & Maintenance	23	\$ 1,703,722	123	\$ 11,393,948
Post Active Remedial Monitoring	0	\$ 0	13	\$ 259,118
Natural Attenuation Monitoring	0	\$ 0	86	\$ 1,118,469
Well Abandonment/SRCO	12	\$ 62,842	87	\$ 762,631
Sub Total	55	\$ 1,867,006	666	\$ 29,759,112

Note: Well Abandonment includes POs for Verification for Well Abandonment. LSSI Obligations are reflected only after signed and returned from Contractor not when authorized.

FY 2020-21 Net Fiscal Activity

Activity	November 2020	FY to Date
Purchase/Work Orders	\$ 1,867,006	\$ 29,759,112
Change Orders & Adjustments	\$ (2,970,050)	\$ (17,021,997)
Utilities	\$ 285,361	\$ 1,145,965
Total**	\$ (817,684)	\$ 13,883,080