

Current Eligible Discharge Statuses

as of October 30, 2018

Completed
10,502

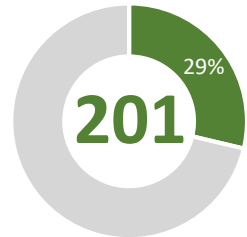
Active
6,189

Awaiting
2,665



FY 2018-19 Discharges Closed to Date

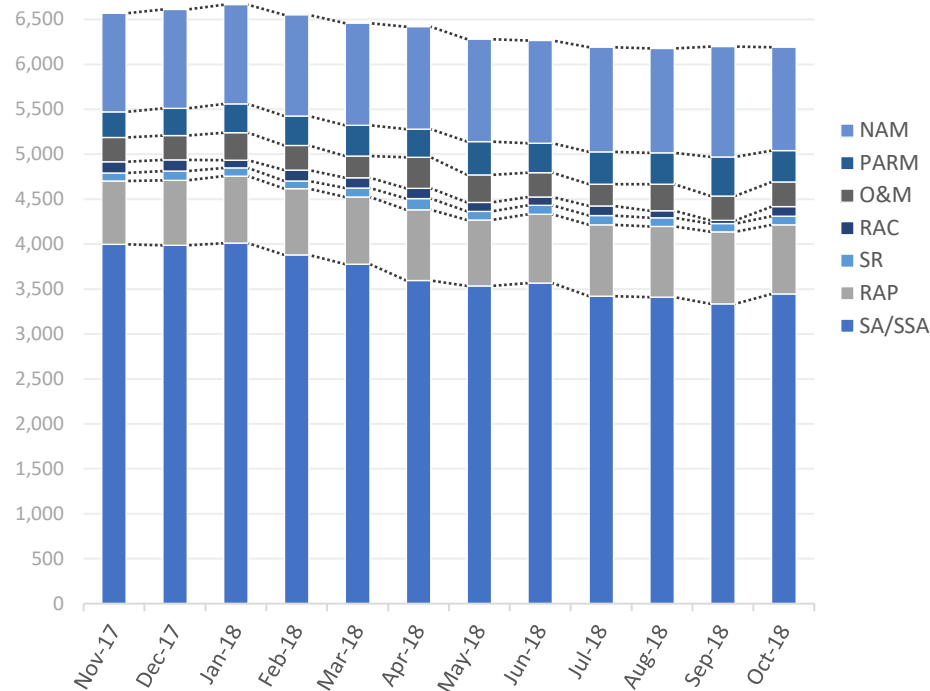
Total Closed to Date:



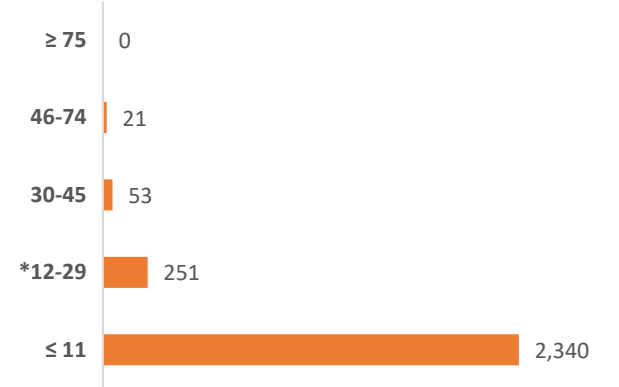
of 700
projected closures

type	closures	% of total
LNFA	17	8%
NFA/SRCO	181	90%
NFAC	3	1%
NREQ	0	0%

Monthly Snapshot of Active Discharge Sub-Phases

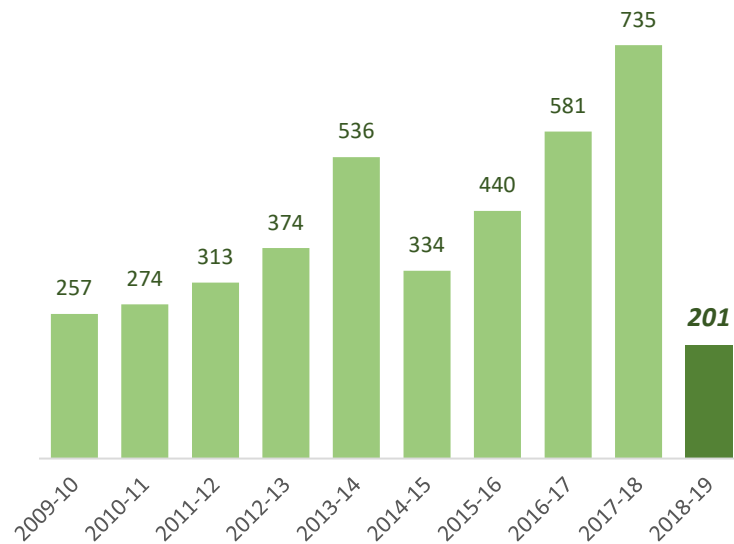


Current Inactive Discharge Scores



* The current Priority Score Funding Threshold is 12.

Discharge Closures by Fiscal Year

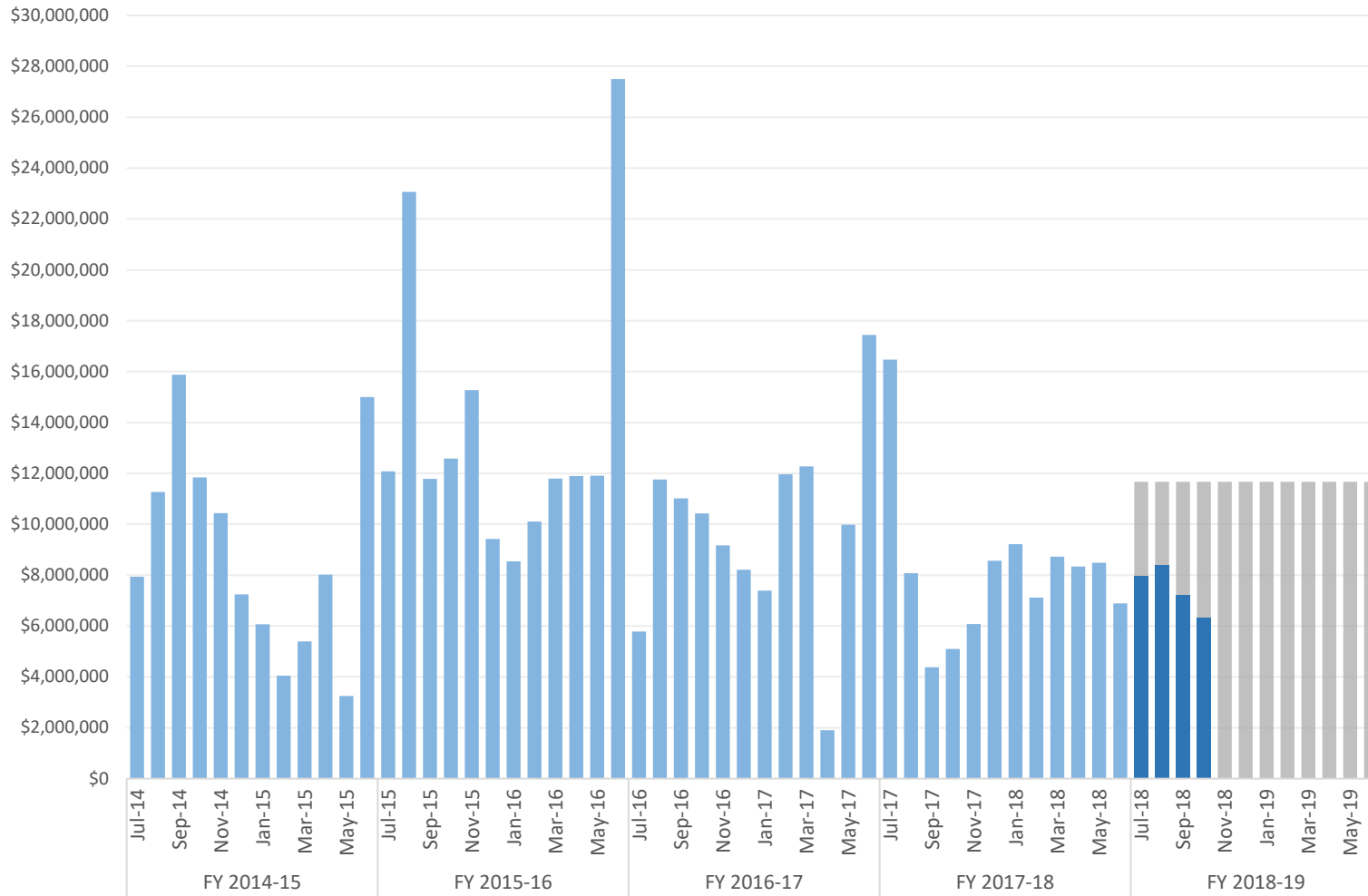


Sub-Phase	Nov-17	Dec-17	Jan-18	Feb-18	Mar-18	Apr-18	May-18	Jun-18	Jul-18	Aug-18	Sep-18	Oct-18
Site Assessment/Supplemental (SA/SSA)	3,998	3,986	4,010	3,880	3,775	3,596	3,533	3,567	3,420	3,409	3,335	3,445
Remedial Action Plan (RAP)	705	725	747	736	749	787	735	765	794	788	802	770
Source Removal (SR)	87	100	90	87	99	124	96	99	104	95	90	96
Remedial Action Construction (RAC)	125	126	88	120	116	113	101	95	106	80	36	108
Operation & Maintenance (O&M)	272	271	304	273	240	345	306	270	244	295	272	271
Post Active Remedial Monitoring (PARM)	286	302	320	328	342	314	368	328	358	350	435	351
Natural Attenuation Monitoring (NAM)	1,096	1,100	1,104	1,126	1,135	1,140	1,139	1,142	1,163	1,160	1,226	1,148

Encumbrances, Assignments, & Assessments

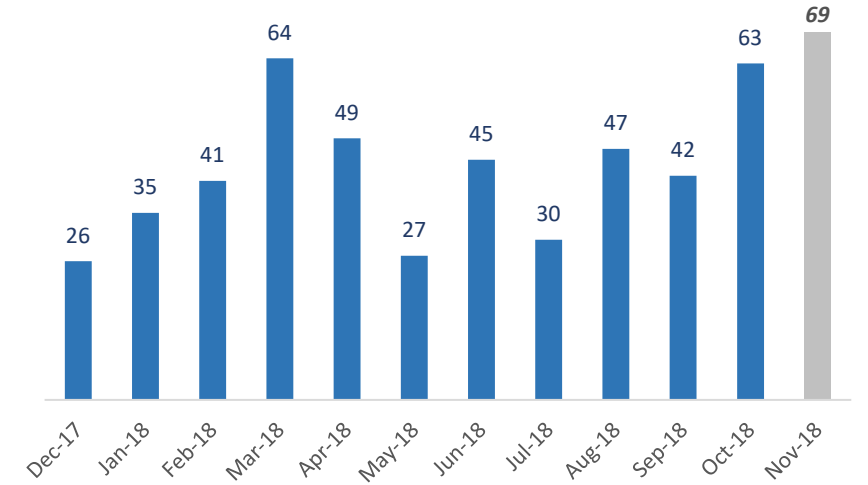
Monthly Net Encumbrance Amounts *(with FY 18-19 projections)*

as of October 31, 2018



CSF Assignments by Month *(with 1-month projection)*

as of October 30, 2018



FY 18-19 New Assessments by Month

as of October 30, 2018

Month	Number of New Assessments
July 2018	45
August 2018	43
September 2018	52
October 2018	35
November 2018	
December 2018	
January 2019	
February 2019	
March 2019	
April 2019	
May 2019	
June 2019	
Total	175

Encumbrance Activity

as of October 31, 2018

FY 2018-19 Encumbrances by Month

Month	FY Projection	Encumbered	*Net Encumbered	Net Percentage
July 2018	\$ 11,667,750	\$ 9,244,371	\$ 7,961,274	68%
August 2018	\$ 11,667,750	\$ 10,471,706	\$ 8,410,410	72%
September 2018	\$ 11,667,750	\$ 9,534,673	\$ 7,212,771	62%
October 2018	\$ 11,667,750	\$ 10,005,636	\$ 6,322,746	54%
November 2018	\$ 11,667,750	-	-	0%
December 2018	\$ 11,667,750	-	-	0%
January 2019	\$ 11,667,750	-	-	0%
February 2019	\$ 11,667,750	-	-	0%
March 2019	\$ 11,667,750	-	-	0%
April 2019	\$ 11,667,750	-	-	0%
May 2019	\$ 11,667,750	-	-	0%
June 2019	\$ 11,667,248	-	-	0%
Grand Total	\$ 140,012,498	\$ 39,256,386	\$ 29,907,202	21%

FY 2018-19 Fiscal Activity by Phase

Phase	October 2018		FY to Date	
	Count	Amount	Count	Amount
Low Score Site Initiative	44	\$ 790,210	238	\$ 3,829,552
Site Assessment <i>(including LSA)</i>	85	\$ 2,891,108	291	\$ 10,886,804
Source Removal <i>(including FPR)</i>	12	\$ 1,896,149	28	\$ 5,794,146
Remedial Action Plan <i>(including Pilot Test)</i>	42	\$ 801,079	141	\$ 3,447,723
Remedial Action Construction	10	\$ 1,543,141	43	\$ 7,544,125
Operation & Maintenance	9	\$ 677,572	36	\$ 3,410,609
Post Active Remedial Monitoring	16	\$ 343,062	47	\$ 1,214,405
Natural Attenuation Monitoring	68	\$ 811,066	209	\$ 2,531,279
Well Abandonment/SRCO	20	\$ 252,250	57	\$ 597,743
Sub Total	306	\$ 10,005,636	1,090	\$ 39,256,386

Total Encumbered by Fiscal Year Allocation

Fiscal Year	FCO Appropriation	**Total Encumbered	Appropriation Balance
FY 2017-18 <i>(carry over)</i>	\$ 30,012,498	\$ 30,012,498	\$ 0
FY 2018-19	\$ 110,000,000	\$ 0	\$ 110,000,000

FY 2018-19 Net Fiscal Activity

Activity	October 2018	FY to Date
Purchase/Work Orders	\$ 10,005,636	\$ 39,256,386
STCM Change Orders & Adjustments	\$ (3,944,666)	\$ (10,213,779)
Utilities	\$ 261,776	\$ 864,595
Total**	\$ 6,322,746	\$ 29,907,202

* Includes WOs, POs, COs, Utilities & Adjustments.

** Monthly Net Results totals are calculated from PO/WOs sent to F&A; Total Encumbered by Fiscal Year is calculated from all encumbered in STCM.