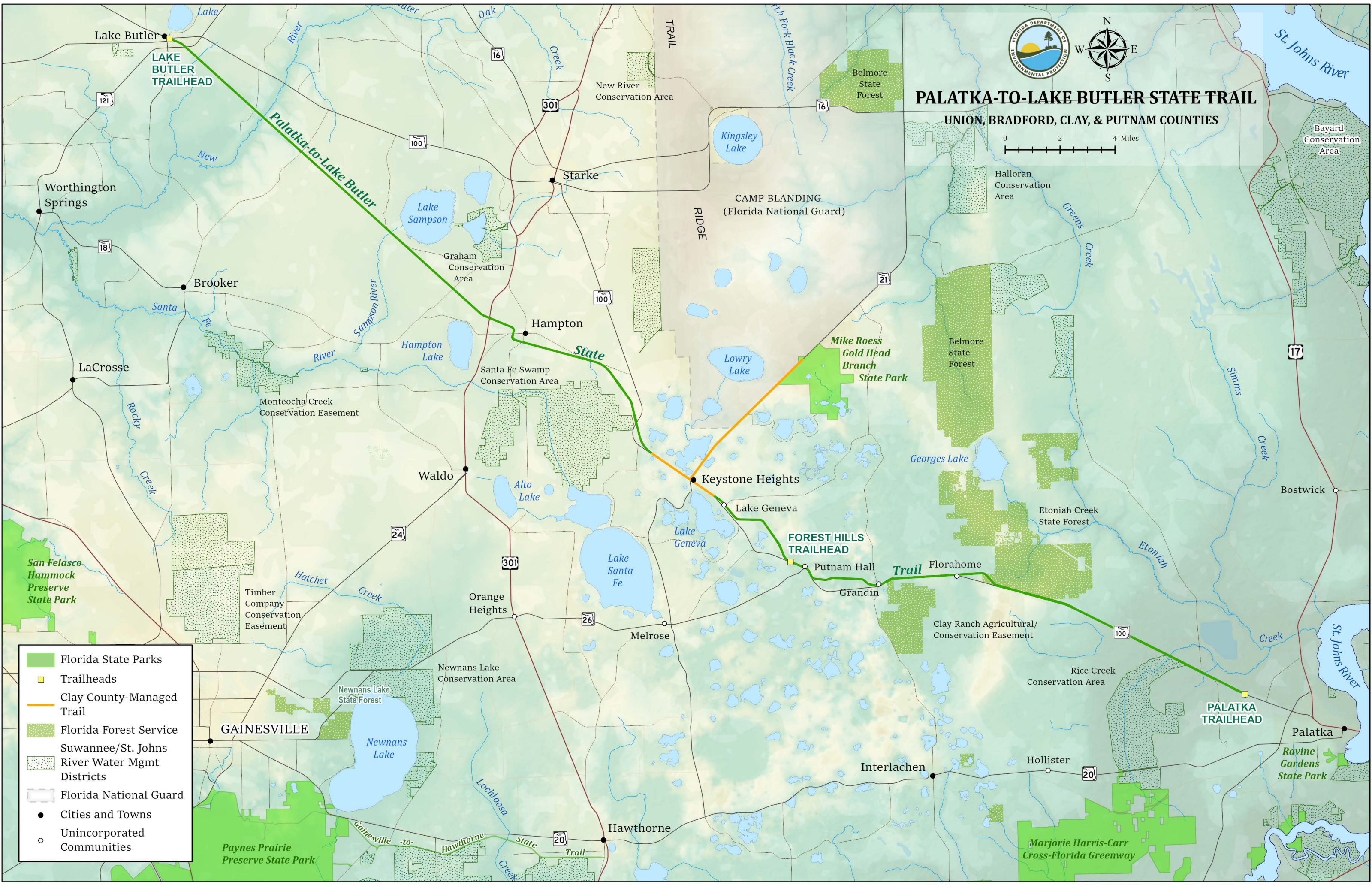
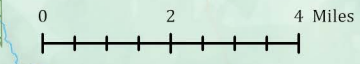


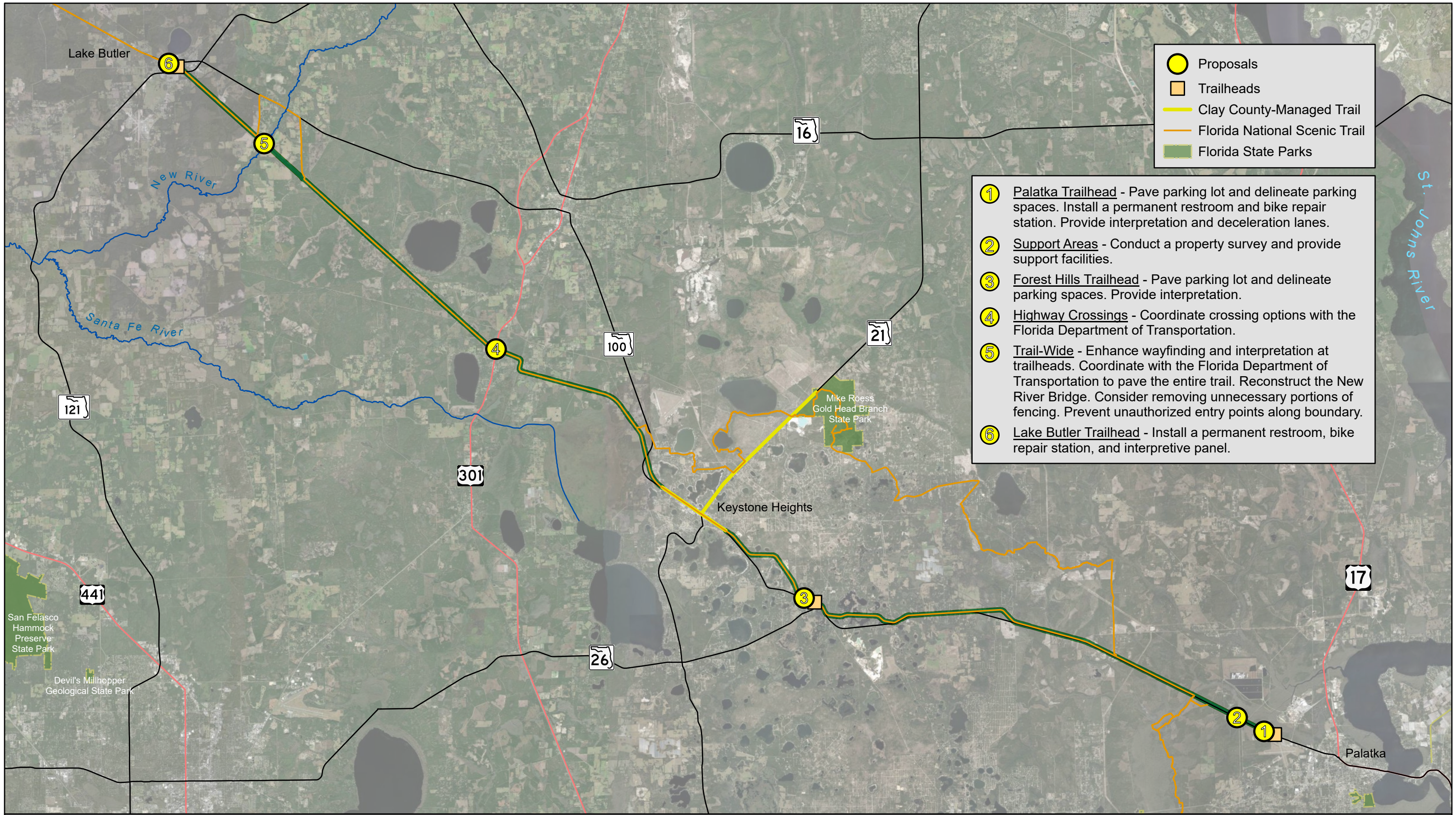


PALATKA-TO-LAKE BUTLER STATE TRAIL

UNION, BRADFORD, CLAY, & PUTNAM COUNTIES



- Florida State Parks
- Trailheads
- Clay County-Managed Trail
- Florida Forest Service
- Suwannee/St. Johns
- River Water Mgmt Districts
- Florida National Guard
- Cities and Towns
- Unincorporated Communities



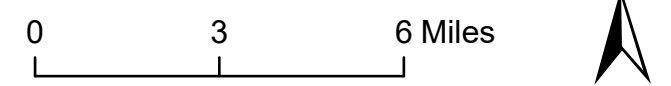
- Proposals
- Trailheads
- Clay County-Managed Trail
- Florida National Scenic Trail
- Florida State Parks

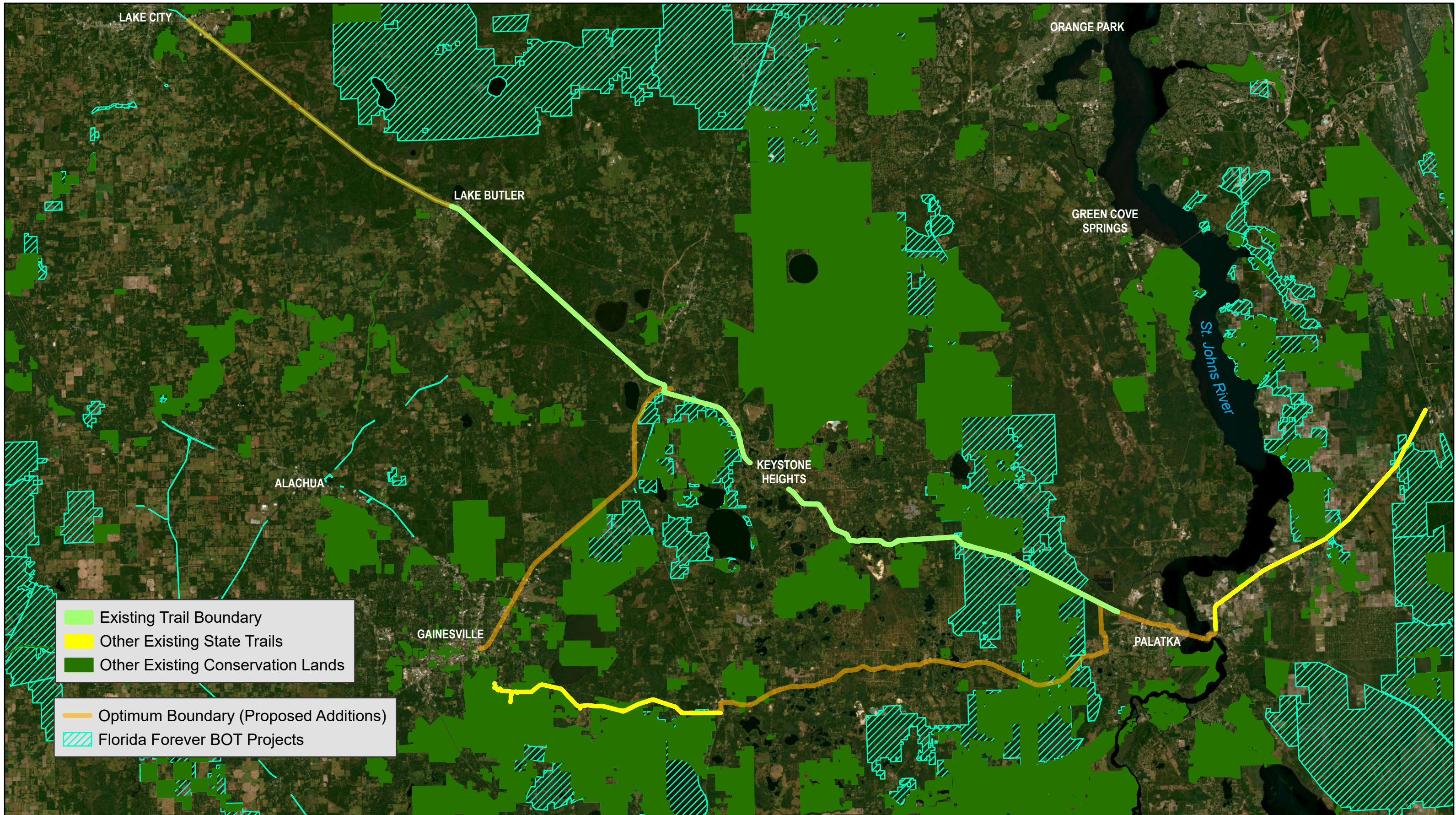
- 1** Palatka Trailhead - Pave parking lot and delineate parking spaces. Install a permanent restroom and bike repair station. Provide interpretation and deceleration lanes.
- 2** Support Areas - Conduct a property survey and provide support facilities.
- 3** Forest Hills Trailhead - Pave parking lot and delineate parking spaces. Provide interpretation.
- 4** Highway Crossings - Coordinate crossing options with the Florida Department of Transportation.
- 5** Trail-Wide - Enhance wayfinding and interpretation at trailheads. Coordinate with the Florida Department of Transportation to pave the entire trail. Reconstruct the New River Bridge. Consider removing unnecessary portions of fencing. Prevent unauthorized entry points along boundary.
- 6** Lake Butler Trailhead - Install a permanent restroom, bike repair station, and interpretive panel.



Palatka-to-Lake Butler State Trail

Conceptual Land Use Plan





Palatka-to-Lake Butler State Trail

Optimum Boundary

