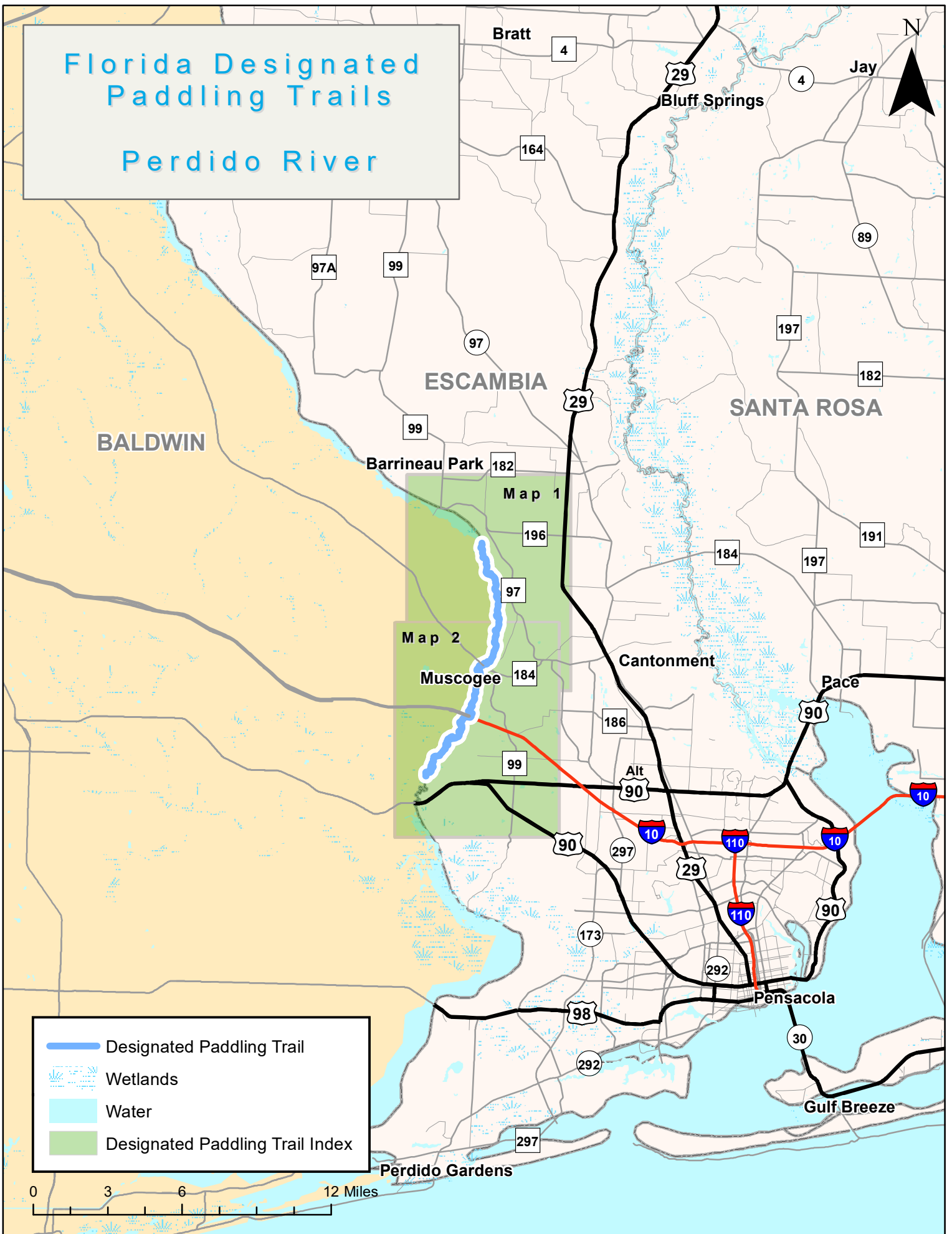


# Florida Designated Paddling Trails

## Perdido River



# Perdido River Paddling Trail Map 1

N



99

Barrineau Park

97

BARRINEAU PK SCHOOL RD

Northgate Farms

**Access Point 1: Fillingim Landing**  
N: 30.6750° W: -87.4059°

196

Cross Creek

FILLINGIM LANDING RD

**Access Point 2: Otto Hill Campground**  
N 30.6663° W -87.4050°

29

Perdido River

Perdido River Water Management Area



BALDWIN

ESCAMBIA

JACK'S BRANCH RD

**Access Point 3: Pipes Landing**  
N: 30.6305° W: -87.3932°

OLD BRIDGE RD



Perdido River Water Management Area

RIVER ANNEX RD

SANTA ROSA RD

Cantonment

Twin Pines

184

Muscogee

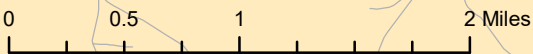
Perdido River Water Management Area

184

99

97

- Perdido River Paddling Trail
- Camping
- Canoe/Kayak Launch
- Restrooms
- Florida Conservation Lands
- Wetlands



# Perdido River Paddling Trail Map 2

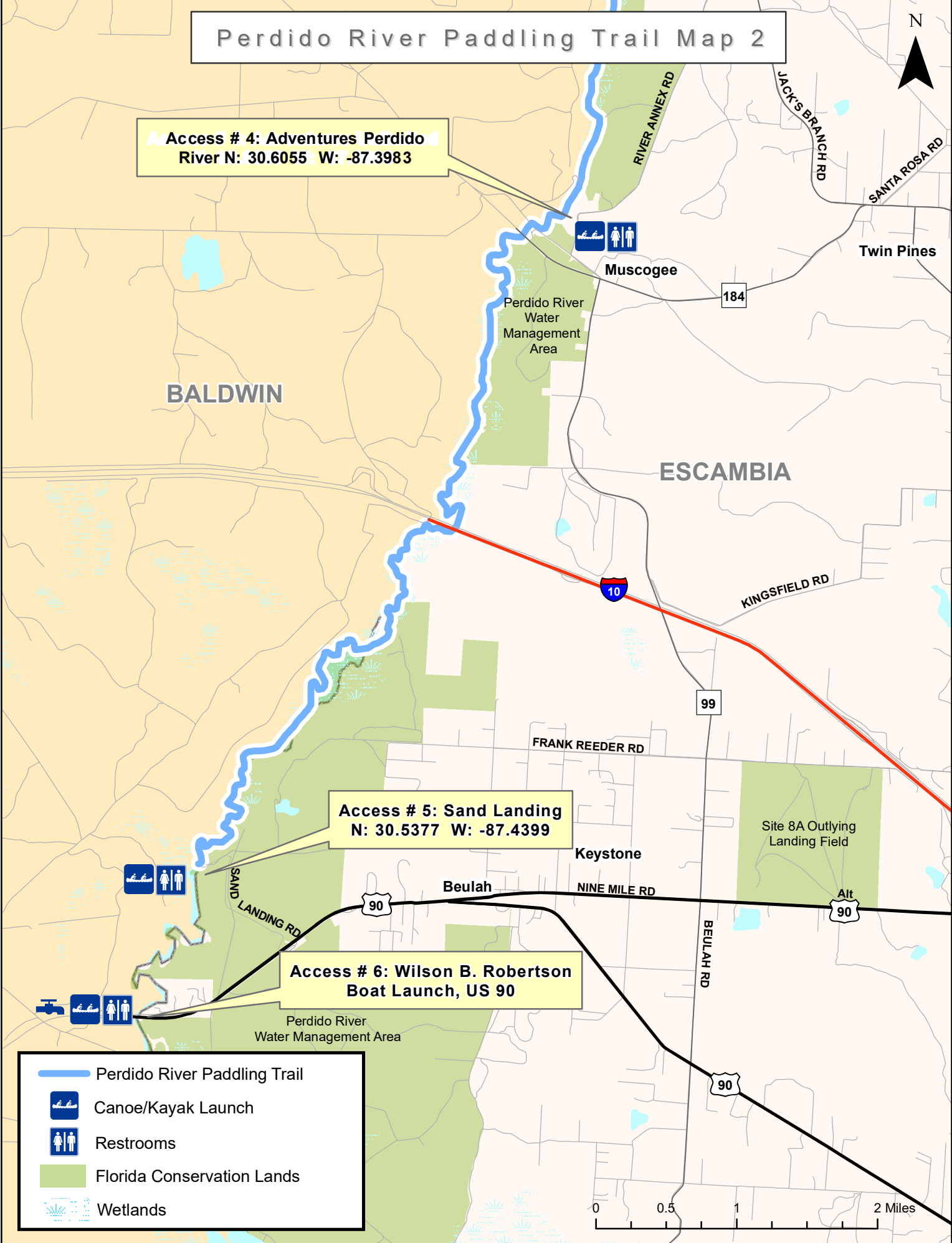


**Access # 4: Adventures Perdido**  
River N: 30.6055 W: -87.3983

**Access # 5: Sand Landing**  
N: 30.5377 W: -87.4399

**Access # 6: Wilson B. Robertson  
Boat Launch, US 90**

- Perdido River Paddling Trail
- Canoe/Kayak Launch
- Restrooms
- Florida Conservation Lands
- Wetlands





# Perdido River Paddling Trail Guide

## The Waterway

The Perdido River flows about 44 miles from southern Alabama to Perdido Bay, forming Florida's western border with Alabama. The Perdido River was named by the Spaniards who occupied the area until 1813 and the name is translated as "lost." The river curves past extensive woodlands of pine, cypress and juniper cedar while numerous sandbars offer ideal rest spots. The sparkling waters are often tinted with yellow or red-black tannins from swamp vegetation, a natural occurrence. Seepage slopes, flatwoods and wet prairie areas within the river basin are home to rare pitcher plants. The river and its tributaries also support several species of rare and imperiled fish.

## The Paddling Experience

This easy 15.4-mile paddling trail is a classic Panhandle river with tea-colored water cradled by white sandbars. The river is narrow, twisting and fast-moving in the upper stretches before becoming wider and slower as it nears Perdido Bay. The popular 4-mile segment from Fillingim Landing to The Pipes Landing offers a short day trip with scenic beauty, little development and is a good length for beginners who know how to steer. From the Pipes Landing to Sand Landing, the river becomes wider and much slower, with fewer sandbars. Several of the original private access points along the river are no longer available or they do not allow parking, such as the Barrineau Park Bridge. [Water levels](#) are best between 2 to 6 feet at the Barrineau Park Bridge gauge. Above 7 feet, some of the dirt roads leading to river access are impassable and the river is dangerous as it nears flood stage of 13 feet.

The Perdido River is also part of the [Alabama State Lands Canoe Trails](#) and six river shelters can be reserved for a fee. The Alabama trail begins above the Florida trail and efforts are underway to synchronize the two and extend the designated trail farther south.

Try your luck [fishing](#) on the Perdido River which can be very productive, especially during the warm weather months. Largemouth bass, chain pickerel, bluegill, and longear sunfish strike many types of baits and lures.

Note: Because it is narrow in places, the Perdido is prone to log jams that can move with flood waters to new locations. Check with [Adventures Perdido River](#) about current conditions:

## Access Points

### #1, Start of the Trail, Fillingim Landing

The [launch site](#) is a series of wide steps leading to the water. This is a popular local swimming area and parking may be full on warm weekends and holidays. *From I-10, travel north on US 29 (exit 10) about 13.5 miles. Turn left (west) on CR 196 and travel 3 miles to a crossroad marked by a church. Turn left (south) on CR 97 (Jack's Branch Road.) and travel less than a half mile. Turn right at Fillingim Landing Road and travel about a quarter mile to the river.*



# Perdido River Paddling Trail Guide

## #2, Mile 0.8, Otto Hill

[Otto Hill Group Campsite](#) includes a portable toilet, pavilion, and access to the bank of the river. This campsite is available by reservation only. Otto Hill is subject to flooding at certain times of the year and may be closed temporarily during times of high water. *From I-10, travel north on US 29 (exit 10) about 8.3 miles and turn left on (west) on Muscogee Road. Around 2.6 miles the road forks and becomes Jack's Branch Road (CR 97), continue about 4.8 miles to the entrance on the left on top of a hill.*

## #3, Mile 4.3, The Pipes Landing

[The Pipes](#) offers a shallow, sandy beach for launching. The river floods the road with water levels near 7 feet; so use this access when water levels are less than 6 feet. *From I-10, travel north on US 29 (exit 10) about 8 miles to Cantonment traffic signal at CR 84 (Muscogee Road). Turn left (west) for 2.6 miles to CR 97, (Jack's Branch Road), and travel northwest on Jack's Branch Road (Muscogee curves to the left). Travel 3 miles and take a left onto Old Bridge Road, a neighborhood street. Go to the end of Old Bridge Road and continue on the dirt road to the river. It is a total of 1.1 miles from Jack's Branch Road to the river.*

## #4, Mile 6.4, Adventures Unlimited (private)

Customers of [Adventures Perdido River](#) outfitters can take out at their location on the river 2 miles below The Pipes Landing. Rentals and shuttling are available, there is a fee to launch. *Take I-10 to exit #5 (90A). Turn right (or west) on 90A, go 3 miles to CR 99. Turn right on 99, go 5 miles to CR 184. Cross 184, turn left on River Annex Road, located about 1/2 mile on the left.*

## #5, Mile 15.4, End of the Trail, [Sand Landing](#)

The unpaved Sand Landing Road off US 90 may be missing a street sign, so look for a Perdido River Wildlife Management Area sign just past the weigh station and power lines on the right. This is the entrance to the road. *Take I-10 West out of Pensacola to Alt US90/SR10 (Exit 5). Take Alt US90/SR10 west which merges into US90 just west of the town of Beulah. Take US90 west to Sand Landing Road and take a right (north). Travel about a mile and take a left at the sign for the landing.*

## #6, Mile 18.0, (optional take out), Wilson B. Robertson Boat Launch, US 90 Bridge

Opened in 2016, a new park with several types of access is located at the US 90 Bridge. An accessible hand-launch option and a multi-laned concrete ramp are available along with a long floating dock to allow visitors to tie up and enjoy a picnic under the shady pavilions. Just adjacent on the northeast side of the US 90 Bridge is Ruby's Fish Camp, a colorful local stop that charges a small fee for launching.

## Outfitters and Shuttle Service

[Adventures Perdido River](#), (850) 968-5529, 160 River Annex Rd., Cantonment, 32533.



# Perdido River Paddling Trail Guide



*Perdido Boat Ramp, US 90, Liz Sparks*



*Adventures Perdido River*



*Fillingham Landing, Steve Brown*