

Piney Point Updates April 2021



FLORIDA DEPARTMENT OF ENVIRONMENTAL PROTECTION

CONTACT: DEP Press Office, 850-245-2112, DEPNews@FloridaDEP.gov

Piney Point Update - April 30, 2021

Today, a layer of geo-composite material was placed over the [steel plate](#) in the NGS-South compartment. In addition to the [stone aggregate](#) placed under the plate, this additional layer of repair will further stabilize the liner seam-separation. The flow continues to be minimized as a result of these repairs and remains contained onsite.



Key status updates and response activities:

- Discharges to Port Manatee ceased April 9, 2021, and have not resumed at this time. It remains DEP's priority, if possible, to ensure any future necessary discharges are pre-treated to minimize ecological impacts.
- DEP has been methodically relocating water among the lined storage basins onsite to safely manage water, respond to rainfall events and initiate water treatment. Water levels can be expected to fluctuate daily due to these water management activities, as well as evaporation.
- Approximately 200 million gallons remain in the NGS-South compartment.
- DEP continues to monitor and sample surrounding waterways following previous discharges. DEP's [interactive water quality dashboard](#) details sampling locations and corresponding results to evaluate any environmental impact. Sampling results to date currently range between non-detect to normal/background levels. Results will continue to be posted as soon as they are available.
- DEP is also working collaboratively with the Tampa Bay Estuary Program (TBEP) and local governments to cover more area and collect more data. For a comprehensive view of all sampling in Tampa Bay related to Piney Point, visit TBEP's [interactive water quality dashboard](#).

- DEP continues working with the Florida Fish and Wildlife Conservation Commission (FWC) and the Florida Department of Health to monitor algal blooms and water quality in the area. Currently, [FWC sampling results](#) in the localized area of discharges in Manatee County remain within the range of non-detect to low concentrations of *K. brevis* (a species of red tide). There are no reported fish kills in this area. FWC is the lead agency on red tide and will continue to update conditions on their [website](#). For more information on red tide, please visit [ProtectingFloridaTogether.gov](#).

Residents can find the latest information on the status of the site and response activities at [ProtectingFloridaTogether.gov/PineyPointUpdate](#).

<https://content.govdelivery.com/accounts/FLDEP/bulletins/2d7199f>



CONTACT: DEP Press Office, 850-245-2112, DEPNews@FloridaDEP.gov

Piney Point Update - April 29, 2021

Today, DEP and dive teams concluded their latest mission utilizing submerged cameras and technology to further assess the [stone aggregate](#) and steel plate repairs in NGS-South. Based on this assessment, no further aggregate is expected to be needed at this time. Flow continues to be minimized as a result of these repairs. Work for additional repairs are already underway to maintain stabilization and control of the concentrated seepage onsite.



Key status updates and response activities:

- DEP has been methodically relocating water among the lined storage basins onsite to safely manage water, respond to rainfall events and initiate water treatment. Water levels can be expected to fluctuate daily due to these water management activities, as well as evaporation.
- Discharges to Port Manatee ceased April 9, 2021, and have not resumed at this time. It remains DEP's priority, if possible, to ensure any future necessary discharges are pre-treated to minimize ecological impacts. Water treatment onsite has been initiated.
- Approximately 197 million gallons remain in the NGS-South compartment.
- DEP continues to monitor and sample surrounding waterways following previous discharges. At this time, bloom conditions have been observed in the localized area of previous discharges. To date, results have ranged from non-detect to trace levels of cyanotoxins. DEP's [interactive water quality dashboard](#) details sampling locations and corresponding results to evaluate any environmental impact. Results will continue to be posted as soon as they are available. DEP is working collaboratively with the Tampa Bay Estuary Program (TBEP) and local governments to cover more area and collect more data. For a comprehensive view of all sampling in Tampa Bay related to Piney Point, visit TBEP's [interactive water quality dashboard](#).
- DEP continues working with the Florida Fish and Wildlife Conservation Commission (FWC) and the Florida Department of Health to monitor algal blooms and water quality in the area. Currently, [FWC sampling results](#) in the localized area of discharges in Manatee County remain within the range of non-detect to low concentrations of *K. brevis* (a species of red tide). There are no reported fish kills in this area. FWC is the lead agency on red tide and will continue to update conditions on their [website](#). For more information on red tide, please visit ProtectingFloridaTogether.gov.

Residents can find the latest information on the status of the site and response activities at ProtectingFloridaTogether.gov/PineyPointUpdate.



Dive teams assess repair efforts using submerged technology.

<https://content.govdelivery.com/accounts/FLDEP/bulletins/2d6e05a>



CONTACT: DEP Press Office, 850-245-2112, DEPNews@FloridaDEP.gov

Piney Point Update - April 28, 2021

Today, dive teams were deployed in the NGS-South compartment to inspect the [stone aggregate](#) and further assess repair efforts of the liner seam separation. The goal of this mission was to gain additional visual monitoring and install a pipe to place any future necessary stone aggregate. DEP continues to observe daily reductions in flow as a result of these repairs.



Key status updates and response activities:

- DEP has been methodically relocating water among the lined storage basins onsite to safely manage water, respond to rainfall events and prepare for water treatment. Water levels can be expected to fluctuate daily due to these water management activities, as well as evaporation.
- Discharges to Port Manatee ceased April 9, 2021, and have not resumed at this time. It remains DEP's priority, if possible, to ensure any future necessary discharges are pre-treated to minimize ecological impacts.
- Approximately 194 million gallons remain in the NGS-South compartment.
- DEP continues to monitor and sample surrounding waterways following previous discharges. At this time, bloom conditions have been observed in the localized area of previous discharges. To date, results have ranged from non-detect to trace levels of cyanotoxins. DEP's [interactive water quality dashboard](#) details sampling locations and corresponding results to evaluate any environmental impact. Results will continue to be posted as soon as they are available. DEP is working collaboratively with the Tampa Bay Estuary Program (TBEP) and local governments to cover more area and collect more data. For a comprehensive view of all sampling in Tampa Bay related to Piney Point, visit TBEP's [interactive water quality dashboard](#).
- DEP continues working with the Florida Fish and Wildlife Conservation Commission (FWC) and the Florida Department of Health to monitor algal blooms and water quality in the area. Currently, [FWC sampling results](#) in the localized area of discharges in Manatee County remain within the range of non-detect to low concentrations of *K. brevis* (a species of red tide). There are no reported fish kills in this area. FWC is the lead agency on red tide and will continue to update conditions on their [website](#). For more information on red tide, please visit ProtectingFloridaTogether.gov.

Residents can find the latest information on the status of the site and response activities at ProtectingFloridaTogether.gov/PineyPointUpdate.



Dive teams preparing to further assess repair efforts underwater.

<https://content.govdelivery.com/accounts/FLDEP/bulletins/2d54131>



CONTACT: DEP Press Office, 850-245-2112, DEPNews@FloridaDEP.gov

Piney Point Update - April 27, 2021

Florida Department of Environmental Protection (DEP) surface water samplers are onsite daily to conduct monitoring and maintain oversight of sampling methods and protocols for water treatment efforts.

Key status updates and response activities:

- DEP continues to observe daily reductions of concentrated seepage onsite as a result of the [stone aggregate](#) that was placed as a repair to the NGS-South liner seam separation. Field operation crews continue to monitor the plate and aggregate using submerged technology.
- DEP has been methodically relocating water among the lined storage basins onsite to safely manage water, respond to rainfall events and prepare for water treatment. Water levels can be expected to fluctuate daily due to these water management activities, as well as evaporation.
- Discharges to Port Manatee ceased April 9, 2021, and have not resumed at this time. It remains DEP's priority, if possible, to ensure any future necessary discharges are pre-treated to minimize ecological impacts.
- Approximately 193 million gallons remain in the NGS-South compartment.
- DEP continues to monitor and sample surrounding waterways following previous discharges. At this time, bloom conditions have been observed in the localized area of previous discharges. To date, results have ranged from non-detect to trace levels of cyanotoxins. DEP's [interactive water quality dashboard](#) details sampling locations and corresponding results to evaluate any environmental impact. Results will continue to be posted as soon as they are available. DEP is working collaboratively with the Tampa Bay Estuary Program (TBEP) and local governments to cover more area and collect more data. For a comprehensive view of all sampling in Tampa Bay related to Piney Point, visit TBEP's [interactive water quality dashboard](#).



- Red tide conditions in the Gulf of Mexico were detected prior to previous discharges, but outside of the immediate discharge area. This past week, results were reported detecting red tide in lower Tampa Bay, west of the Manatee River. Based on results of water quality monitoring and utilization of [Ocean Circulation Models](#), the red tide conditions in these areas are not thought to be a direct result of the Piney Point discharges. However, elevated nutrients have the potential to exacerbate these algal blooms. Increased sampling is ongoing. DEP continues working with the Florida Fish and Wildlife Conservation Commission (FWC) and the Florida Department of Health to monitor algal blooms and water quality in the area. Currently, there are no reported fish kills in the localized discharge area. FWC is the lead agency on red tide and will continue to update conditions on their [website](#). For more information on red tide, please visit [ProtectingFloridaTogether.gov](#).

Residents can find the latest information on the status of the site and response activities at [ProtectingFloridaTogether.gov/PineyPointUpdate](#).

<https://content.govdelivery.com/accounts/FLDEP/bulletins/2d39cd9>



CONTACT: DEP Press Office, 850-245-2112, DEPNews@FloridaDEP.gov

Piney Point Update - April 26, 2021

DEP continues to observe daily reductions of concentrated seepage on-site as a result of the [stone aggregate](#) that was placed as a repair to the NGS-South liner seam separation. Field operation crews continue to monitor the plate and aggregate using submerged technology.

Key status updates and response activities:

- DEP has been methodically relocating water among the lined storage basins onsite to safely manage water, respond to rainfall events and prepare for water treatment. Water levels can be expected to fluctuate daily due to these water management activities, as well as evaporation.
- Discharges to Port Manatee ceased April 9, 2021, and have not resumed at this time. It remains DEP's priority, if possible, to ensure any future necessary discharges are pre-treated to minimize ecological impacts.
- Approximately 192 million gallons remain in the NGS-South compartment.
- DEP continues to monitor and sample surrounding waterways following previous discharges. At this time, bloom conditions have been observed in the localized area of previous discharges. To date, results have ranged from non-detect to trace levels of cyanotoxins. DEP's [interactive water quality dashboard](#) details sampling locations and corresponding results to evaluate any environmental impact. Results will continue to be posted as soon as they are available. DEP is working collaboratively with the Tampa Bay Estuary Program (TBEP) and local governments to cover more area and collect more data. For a comprehensive view of all sampling in Tampa Bay related to Piney Point, visit TBEP's [interactive water quality dashboard](#).



- Red tide conditions in the Gulf of Mexico were detected prior to previous discharges, but outside of the immediate discharge area. This past week, results were reported detecting red tide in lower Tampa Bay, west of the Manatee River. Based on results of water quality monitoring and utilization of [Ocean Circulation Models](#), the red tide conditions in these areas are not thought to be a direct result of the Piney Point discharges. However, elevated nutrients have the potential to exacerbate these algal blooms. Increased sampling is ongoing. DEP continues working with the Florida Fish and Wildlife Conservation Commission (FWC) and the Florida Department of Health to monitor algal blooms and water quality in the area. Currently, there are no reported fish kills in the localized discharge area. FWC is the lead agency on red tide and will continue to update conditions on their [website](#). For more information on red tide, please visit [ProtectingFloridaTogether.gov](#).

Residents can find the latest information on the status of the site and response activities at [ProtectingFloridaTogether.gov/PineyPointUpdate](#).

<https://content.govdelivery.com/accounts/FLDEP/bulletins/2d14c85>



CONTACT: DEP Press Office, 850-245-2112, DEPNews@FloridaDEP.gov

Piney Point Update - April 25, 2021

The low-level flow that was observed from the concentrated seepage area April 13 has significantly reduced after incorporating stone aggregate below the steel plate covering the liner seam separation. The placement of this aggregate is one tool being implemented to stabilize the plate. Stabilization will help reduce the low-level seepage flow, minimize erosion and provide a stable foundation for continued repair activities.

Field operation crews continue to monitor the plate and aggregate using submerged technologies.

Key status updates and response activities:

- DEP has been methodically relocating water among the lined storage basins onsite to safely manage water, respond to rainfall events and prepare for water treatment. Water levels can be expected to fluctuate daily due to these water management activities, as well as evaporation.
- Discharges to Port Manatee ceased April 9, and have not resumed at this time. It remains DEP's priority, if possible, to ensure any future necessary discharges are pre-treated to minimize ecological impacts.
- Approximately 192 million gallons remain in the NGS-South compartment.
- DEP continues to monitor and sample surrounding waterways following previous discharges. At this time, bloom conditions have been observed in the localized area of previous discharges. To date, results have ranged from non-detect to trace levels of cyanotoxins. DEP's [interactive water quality dashboard](#) details sampling locations and corresponding results to evaluate any environmental impact. Results will continue to be posted as soon as they are available. DEP is working collaboratively with the Tampa Bay Estuary Program (TBEP) and local governments to cover more area and collect more data. For a comprehensive view of all sampling in Tampa Bay related to Piney Point, visit TBEP's [interactive water quality dashboard](#).
- Red tide conditions in the Gulf of Mexico were detected prior to previous discharges, but outside of the immediate discharge area. This past week, results were reported detecting red tide in lower Tampa Bay, west of the Manatee River. Based on results of water quality monitoring and utilization of [Ocean Circulation Models](#), the red tide conditions in these areas are not thought to be a direct result of the Piney Point discharges. However, elevated nutrients have the potential to exacerbate these algal blooms, and increased sampling is ongoing. DEP continues working with the Florida Fish and Wildlife Conservation Commission (FWC) and the Florida Department of Health to monitor algal

blooms and water quality in the area. Thus far, there are no reported fish kills in the localized discharge area. FWC is the lead agency on red tide and will continue to update conditions on their [website](#). For more information on red tide, please visit ProtectingFloridaTogether.gov.

Residents can find the latest information on the status of the site and response activities at ProtectingFloridaTogether.gov/PineyPointUpdate.

<https://content.govdelivery.com/accounts/FLDEP/bulletins/2d0eeeb>



CONTACT: DEP Press Office, 850-245-2112, DEPNews@FloridaDEP.gov

Piney Point Update - April 24, 2021

The low-level flow that was observed from the concentrated seepage area last Tuesday was significantly reduced after incorporating stone aggregate below the steel plate covering the liner seam separation.

The placement of this aggregate is one tool being implemented to stabilize the plate. Stabilization will help reduce the low-level seepage flow, minimize erosion and provide a stable foundation for continued repair activities.

Field operation crews will continue to monitor the plate and aggregate using sonar and video technologies.

Key status updates and response activities:

- DEP has been methodically relocating water among the lined storage basins onsite to safely manage water, respond to rainfall events and prepare for water treatment. Water levels can be expected to fluctuate daily due to these water management activities, as well as evaporation.
- Discharges to Port Manatee ceased April 9, and have not resumed at this time. It remains DEP's priority, if possible, to ensure any future necessary discharges are pre-treated to minimize ecological impacts.
- Approximately 193 million gallons remain in the NGS-South compartment.
- DEP continues to monitor and sample surrounding waterways following previous discharges. At this time, bloom conditions have been observed in the localized area of previous discharges. To date, results have ranged from non-detect to trace levels of cyanotoxins. DEP's [interactive water quality dashboard](#) details sampling locations and corresponding results to evaluate any environmental impact. Results will continue to be posted as soon as they are available. DEP is working collaboratively with the Tampa Bay Estuary Program (TBEP) and local governments to cover more area and collect more data. For a comprehensive view of all sampling in Tampa Bay related to Piney Point, visit TBEP's [interactive water quality dashboard](#).
- Red tide conditions in the Gulf of Mexico were detected prior to previous discharges, but outside of the immediate discharge area. This past week, results were reported detecting red tide in lower Tampa Bay, west of the Manatee River. Based on results of water quality monitoring and utilization of [Ocean Circulation Models](#), the red tide conditions in these areas are not thought to be a direct result of the Piney Point discharges. However,

elevated nutrients have the potential to exacerbate these algal blooms, and increased sampling is ongoing. DEP continues working with the Florida Fish and Wildlife Conservation Commission (FWC) and the Florida Department of Health to monitor algal blooms and water quality in the area. Thus far, there are no reported fish kills. FWC is the lead agency on red tide and will continue to update conditions on their [website](#). For more information on red tide, please visit [ProtectingFloridaTogether.gov](https://protectingfloridatogether.gov).

Residents can find the latest information on the status of the site and response activities at [ProtectingFloridaTogether.gov/PineyPointUpdate](https://protectingfloridatogether.gov/PineyPointUpdate).

<https://content.govdelivery.com/accounts/FLDEP/bulletins/2d0a09f>



CONTACT: DEP Press Office, 850-245-2112, DEPNews@FloridaDEP.gov

Piney Point Update - April 23, 2021

Today, the Florida Department of Environmental Protection (DEP) started placing stone aggregate underneath the steel plate that is covering the liner seam separation on the east wall of the NGS-South compartment. The placement of this aggregate is one tool that will help reduce the low-level seepage flow, minimize erosion and provide a stable foundation for continued repair activities.

Field operation crews will continue to monitor the plate and aggregate using sonar and video technology.

Key status updates and response activities:

- DEP has been methodically relocating water among the lined storage basins onsite to safely manage water, respond to rainfall events and prepare for water treatment. Water levels can be expected to fluctuate daily due to these water management activities, as well as evaporation.
- Discharges to Port Manatee ceased April 9, and have not resumed at this time. It remains DEP's priority, if possible, to ensure any future necessary discharges are pre-treated to minimize ecological impacts.
- Approximately 193 million gallons remain in the NGS-South compartment.
- DEP continues to monitor and sample surrounding waterways following previous discharges. At this time, bloom conditions have been observed in the localized area of previous discharges. To date, results have ranged from non-detect to trace levels of cyanotoxins. DEP's [interactive water quality dashboard](#) details sampling locations and corresponding results to evaluate any environmental impact. Results will continue to be posted as soon as they are available.
- Red tide conditions in the Gulf of Mexico were detected prior to previous discharges, but outside of the immediate discharge area. This past week, results were reported detecting red tide in lower Tampa Bay, west of the Manatee River. Based on results of water quality monitoring and utilization of [Ocean Circulation Models](#), the red tide conditions in these areas are not thought to be a direct result of the Piney Point discharges. However, elevated nutrients have the potential to exacerbate these algal blooms, and increased sampling is ongoing. DEP continues working with the Florida Fish and Wildlife Conservation Commission (FWC) and the Florida Department of Health to monitor algal blooms and water quality in the area. Thus far, there are no reported fish kills. FWC is the

lead agency on red tide and will continue to update conditions on their [website](#). For more information on red tide, please visit [ProtectingFloridaTogether.gov](https://protectingfloridatogether.gov).

Residents can find the latest information on the status of the site and response activities at [ProtectingFloridaTogether.gov/PineyPointUpdate](https://protectingfloridatogether.gov/PineyPointUpdate).

<https://content.govdelivery.com/accounts/FLDEP/bulletins/2cf54f6>



CONTACT: DEP Press Office, 850-245-2112, DEPNews@FloridaDEP.gov

Piney Point Update - April 22, 2021

The Florida Department of Environmental Protection (DEP) continues to conduct repair activities associated with the small detachment discovered underneath the steel plate. DEP is monitoring the steel plate and low-level flow around the clock.

Key status updates and response activities:

- DEP has been methodically relocating water among the lined storage basins onsite to safely manage water, respond to rainfall events and prepare for water treatment. Water levels can be expected to fluctuate daily due to these water management activities, as well as evaporation.
- Discharges to Port Manatee ceased April 9, and have not resumed at this time. It remains DEP's priority, if possible, to ensure any future necessary discharges are pre-treated to minimize ecological impacts.
- Approximately 195 million gallons remain in the NGS-South compartment.
- DEP continues to monitor and sample surrounding waterways following previous discharges. At this time, bloom conditions have been observed in the localized area of previous discharges. To date, results have ranged from non-detect to trace (0.38 ppb) levels of cyanotoxins. DEP's [interactive water quality dashboard](#) details sampling locations and corresponding results to evaluate any environmental impact. Results will continue to be posted as soon as they are available.
- Red tide conditions in the Gulf of Mexico were detected prior to previous discharges, but outside of the immediate discharge area. Yesterday, results were reported detecting red tide in lower Tampa Bay, southwest of the Manatee River. Based on results of water quality monitoring and utilization of [Ocean Circulation Models](#), the red tide conditions in these areas are not thought to be a direct result of the Piney Point discharges. However, elevated nutrients have the potential to exacerbate these algal blooms, and increased sampling is ongoing. DEP continues working with the Florida Fish and Wildlife Conservation Commission (FWC) and the Florida Department of Health to monitor algal blooms and water quality in the area. At this time, there are no reported fish kills. FWC is the lead agency on red tide and will continue to update conditions on their [website](#). For more information on red tide, please visit [ProtectingFloridaTogether.gov](#).

Residents can find the latest information on the status of the site and response activities at [ProtectingFloridaTogether.gov/PineyPointUpdate](https://content.govdelivery.com/accounts/FLDEP/bulletins/2cec820).

<https://content.govdelivery.com/accounts/FLDEP/bulletins/2cec820>



FLORIDA DEPARTMENT OF ENVIRONMENTAL PROTECTION

CONTACT: DEP Press Office, 850-245-2112, DEPNews@FloridaDEP.gov

Piney Point Update - April 21, 2021

Today, third-party engineers completed on-site microgravity surveys in the NGS-South compartment that allows further inspection of subsurface features that could warrant additional investigation.

Key status updates and response activities:

- DEP has been methodically relocating water among the lined storage basins onsite to safely manage water, respond to rainfall events and prepare for water treatment. Water levels can be expected to fluctuate daily due to these water management activities, as well as evaporation.
- Discharges to Port Manatee ceased April 9 and have not resumed at this time. It remains DEP's priority, if possible, to ensure any future necessary discharges are pre-treated to minimize ecological impacts.
- Approximately 190 million gallons remain in the NGS-South compartment. This level will be updated later today.
- DEP continues to monitor and sample surrounding waterways following previous discharges. At this time, bloom conditions have been observed in the localized area of previous discharges. To date, results have ranged from non-detect to trace (0.38 ppb) levels of cyanotoxins. DEP's [interactive water quality dashboard](#) details sampling locations and corresponding results to evaluate any environmental impact. Results will continue to be posted as soon as they are available.
- There are no reported fish kills in the area.

Residents can find the latest information on the status of the site and response activities at ProtectingFloridaTogether.gov/PineyPointUpdate.

<https://content.govdelivery.com/accounts/FLDEP/bulletins/2ce394a>



CONTACT: DEP Press Office, 850-245-2112, DEPNews@FloridaDEP.gov

Piney Point Update - April 20, 2021

The Florida Department of Environmental Protection (DEP) has been methodically relocating water among the lined storage basins onsite to safely manage water, respond to rainfall events and prepare for water treatment. Water levels can be expected to fluctuate daily due to these water management activities, as well as evaporation.

Key status updates and response activities:

- Discharges to Port Manatee ceased April 9 and have not resumed at this time. It remains DEP's priority, if possible, to ensure any future necessary discharges are pre-treated to minimize ecological impacts.
- Approximately 190 million gallons remain in the NGS-South compartment.
- There have been no observed changes in the status of the detachment underneath the steel plate and the low-level flow remains contained within the on-site stormwater collection system.
- DEP continues to monitor and sample surrounding waterways following previous discharges. At this time, bloom conditions have been observed in the localized area of previous discharges. To date, results have ranged from non-detect to trace (0.34 ppb) levels of cyanotoxins. DEP's [interactive water quality dashboard](#) details sampling locations and corresponding results to evaluate any environmental impact. Results will continue to be posted as soon as they are available.
- There are no reported fish kills in the area.

Residents can find the latest information on the status of the site and response activities at ProtectingFloridaTogether.gov/PineyPointUpdate.

<https://content.govdelivery.com/accounts/FLDEP/bulletins/2cdebe1>



FLORIDA DEPARTMENT OF ENVIRONMENTAL PROTECTION

CONTACT: DEP Press Office, 850-245-2112, DEPNews@FloridaDEP.gov

Piney Point Update - April 19, 2021

The Florida Department of Environmental Protection (DEP) is working closely with state meteorologists to monitor predicted weather events. Field operations teams continue making preparations to manage increased stormwater ahead of early week forecasts of rain and wind.

Teams also continue to monitor the small detachment underneath the steel plate around the clock using submerged equipment. There have been no observed changes in the status of the detachment.

Key status updates and response activities:

- Discharges to Port Manatee remain ceased. DEP is working rigorously to get innovative technologies up and running as quickly as possible. It remains DEP's priority, if possible, to ensure any future necessary discharges are pre-treated to minimize ecological impacts.
- Approximately 196.6 million gallons remain in the NGS-South compartment. Elevation and volume will likely fluctuate as innovative technologies are deployed to initiate water treatment.
- Today, DEP deployed an additional surveying and assessment tool. Third-party engineers arrived on-site to conduct microgravity surveys in the vicinity of the NGS-South compartment to further inspect subsurface features that could warrant additional investigation.
- DEP continues to monitor and sample surrounding waterways following previous discharges. At this time, bloom conditions have been observed in the localized area of previous discharges. To date, results have ranged from non-detect to trace (0.34 ppb) levels of cyanotoxins. DEP's [interactive water quality dashboard](#) details sampling locations and corresponding results to evaluate any environmental impact. Results will continue to be posted as soon as they are available.
- There are no reported fish kills in the area.

Residents can find the latest information on the status of the site and response activities at ProtectingFloridaTogether.gov/PineyPointUpdate.

<https://content.govdelivery.com/accounts/FLDEP/bulletins/2cda729>



CONTACT: DEP Press Office, 850-245-2112, DEPNews@FloridaDEP.gov

Piney Point Update - April 18, 2021

The Florida Department of Environmental Protection (DEP) continues to monitor the small detachment discovered underneath the steel plate placed over the liner seam separation on the east wall of the NGS-South compartment. Field operations teams are fully engaged in repair activities. There have been no observed increases in the flow rate and it remains contained within the on-site stormwater collection system.

Key status updates and response activities:

- Discharges to Port Manatee remain ceased. DEP is working rigorously to get innovative technologies up and running as quickly as possible. It remains DEP's priority, if possible, to ensure any future necessary discharges are pre-treated to minimize ecological impacts.
- DEP is making preparations to manage increased stormwater onsite ahead of early week forecasts of rain and wind.
- Approximately 197 million gallons remain in the NGS-South compartment. Elevation and volume will likely fluctuate as innovative technologies are deployed to initiate water treatment.
- DEP continues to monitor and sample surrounding waterways following previous discharges. At this time, bloom conditions have been observed in the localized area of previous discharges. To date, results have ranged from non-detect to trace (0.34 ppb) levels of cyanotoxins. DEP's [interactive water quality dashboard](#) details sampling locations and corresponding results to evaluate any environmental impact. Results will continue to be posted as soon as they are available.
- There are no reported fish kills in the area.

Residents can find the latest information on the status of the site and response activities at ProtectingFloridaTogether.gov/PineyPointUpdate.

<https://content.govdelivery.com/accounts/FLDEP/bulletins/2cd9c93>



FLORIDA DEPARTMENT OF ENVIRONMENTAL PROTECTION

CONTACT: DEP Press Office, 850-245-2112, DEPNews@FloridaDEP.gov

Piney Point Update - April 17, 2021

Today, surface water samplers from the Florida Department of Environmental Protection (DEP) were onsite reviewing innovative technology sampling methods and protocols. It remains DEP's priority, if possible, to ensure any future necessary discharges are pre-treated to minimize ecological impacts.

Key status updates and response activities:

- Discharges to Port Manatee remain ceased. DEP is working rigorously to get innovative technologies up and running as quickly as possible.
- DEP is making preparations to manage increased stormwater onsite ahead of early week forecasts of rain and wind.
- Approximately 205 million gallons remain in the NGS-South compartment. Elevation and volume will likely fluctuate as innovative technologies are deployed to initiate water treatment.
- DEP continues to monitor and sample surrounding waterways following previous discharges. At this time, bloom conditions have been observed in the localized area of previous discharges. To date, results have ranged from non-detect to trace (0.34 ppb) levels of cyanotoxins. DEP's [interactive water quality dashboard](#) details sampling locations and corresponding results to evaluate any environmental impact. Results will continue to be posted as soon as they are available.
- There are no reported fish kills in the area.

Residents can find the latest information on the status of the site and response activities at ProtectingFloridaTogether.gov/PineyPointUpdate.

<https://content.govdelivery.com/accounts/FLDEP/bulletins/2cd89dc>



CONTACT: DEP Press Office, 850-245-2112, DEPNews@FloridaDEP.gov

Piney Point Update - April 16, 2021

Today, the University of South Florida's School of Geosciences began utilizing bathymetry in the NGS-South to survey and further assess the compartment.



On Tuesday afternoon, a low-level flow was observed from the concentrated seepage area on the east wall of NGS-South compartment. Dive crews

immediately arrived on-scene and identified a small detachment underneath the plate placed over the liner seam separation. At this time, the low-level flow rate appears to be consistent and repair efforts continue.

Key status updates and response activities:

- Discharges to Port Manatee remain ceased. The department is working rigorously to get innovative technologies up and running as quickly as possible. It is the department's focus to ensure that, if possible, any future necessary discharges are pre-treated to minimize any ecological impacts.
- DEP continues to monitor and sample surrounding waterways following previous discharges. At this time, bloom conditions have been observed in the localized area of previous discharges. To date, results have ranged from non-detect to trace (0.34 ppb) levels of cyanotoxins. DEP's [interactive water quality dashboard](#) details sampling locations and corresponding results to evaluate any environmental impact. Results will continue to be posted as soon as they are available.
- Approximately 213 million gallons remain in the NGS-South compartment. Elevation and volume will likely fluctuate as innovative technologies are deployed to initiate water treatment.
- There are no reported fish kills in the area.

Residents can find the latest information on the status of the site and response activities at ProtectingFloridaTogether.gov/PineyPointUpdate.

<https://content.govdelivery.com/accounts/FLDEP/bulletins/2cd5a54>



CONTACT: DEP Press Office, 850-245-2112, DEPNews@FloridaDEP.gov

Piney Point Update - April 15, 2021

The department remains fully engaged in first response activities and is diligently monitoring conditions at the site.

On Tuesday afternoon, a low-level flow was observed from the concentrated seepage area on the east wall of NGS-South compartment. Dive crews immediately arrived on-scene and identified a small detachment underneath the plate placed over the liner seam separation. At this time, the low-level flow rate appears to be consistent. Assessment and repair efforts continue.



DEP's Florida Geological Survey, in consultation with Dr. Mark Rains, DEP's Chief Science Officer, is currently on-site completing ground penetrating radar to further assess the concentrated seepage.

Key status updates and response activities:

- Discharges to Port Manatee remain ceased. The department is working rigorously to get innovative technologies up and running as quickly as possible. It is the department's focus to ensure that, if possible, any future necessary discharges are pre-treated to minimize any ecological impacts.
- Approximately 215 million gallons remain in the NGS-South compartment. Elevation and volume will likely fluctuate as innovative technologies are deployed to initiate water treatment.
- DEP continues to monitor and sample surrounding waterways following previous discharges. DEP's [interactive water quality dashboard](#) details sampling locations and corresponding results to evaluate any environmental impact. Results will continue to be posted as soon as they are available.
- There are no reported fish kills in the area.



Residents can find the latest information on the status of the site and response activities at ProtectingFloridaTogether.gov/PineyPointUpdate.

<https://content.govdelivery.com/accounts/FLDEP/bulletins/2cd1a19>



CONTACT: DEP Press Office, 850-245-2112, DEPNews@FloridaDEP.gov

Piney Point Update - April 14, 2021

The department remains fully engaged in first response activities and is diligently monitoring conditions at the site.

On Tuesday, at approximately 3:30 p.m., a low-level flow was observed from the concentrated seepage area on the east wall of NGS-South compartment. Dive crews immediately arrived on-scene and identified a small detachment underneath the plate placed over the liner seam separation. At this time, the low-level flow rate is consistent and not increasing. Crews continue to make progress in repairing the seal. No other leaks have been identified and the released flow has remained within the on-site stormwater collection system.



Key status updates and response activities:

- Discharges to Port Manatee remain ceased. The department is working rigorously to get innovative technologies up and running as quickly as possible. It is the department's focus to ensure that, if possible, any future necessary discharges are pre-treated to minimize any ecological impacts.
- Approximately 222 million gallons remain in the NGS-South compartment. Elevation and volume will likely fluctuate as innovative technologies are deployed to initiate water treatment.
- DEP continues to monitor and sample surrounding waterways following previous discharges. DEP's [interactive water quality dashboard](#) details sampling locations and corresponding results to evaluate any environmental impact. Results will continue to be posted as soon as they are available.
- There are no reported fish kills in the area.



Residents can find the latest information on the status of the site and response activities at ProtectingFloridaTogether.gov/PineyPointUpdate.

<https://content.govdelivery.com/accounts/FLDEP/bulletins/2ccb36>



FLORIDA DEPARTMENT OF ENVIRONMENTAL PROTECTION

CONTACT: DEP Press Office, 850-245-2112, DEPNews@FloridaDEP.gov

Piney Point Update - April 13, 2021



Today, Governor DeSantis was joined by legislators, DEP Secretary Noah Valenstein and Manatee County officials at the Piney Point facility in Manatee County to announce next steps in the state's response at Piney Point. The announcement included directing DEP to create a long-term plan for the closure of Piney Point, ensuring this will be the last chapter in the site's long history. The Governor also directed DEP to take any and all legal actions to ensure HRK and any other actors are held fully accountable.

The first step towards permanent closure is to ensure we are ready to take the next steps toward any necessary restoration and mitigation as quickly as possible. To that end, Governor DeSantis also announced that he is redirecting \$15.4 million from existing appropriations at DEP to be used for innovative technologies to pre-treat water at the site.

Senator Wilton Simpson expressed the legislature's support to supplement these immediate actions with future funding appropriations, starting with an estimated \$100 million in the coming fiscal year.

Key status updates and response activities:

- Discharges to Port Manatee remain ceased.
- Approximately 222 million gallons remain in the NGS-South compartment. Elevation and volume will likely fluctuate as innovative technologies are deployed to initiate water treatment.
- DEP continues to monitor and sample surrounding waterways following previous discharges. DEP's [interactive water quality dashboard](#) details sampling locations and corresponding results to evaluate any environmental impact. Results will continue to be posted as soon as they are available.
- There are no reported fish kills in the area.
- The department remains fully engaged in first response activities and is diligently monitoring conditions at the site. At approximately 3:30 PM, a low-level flow was observed from the concentrated seepage area on the east wall of NGS-South compartment. Dive crews immediately arrived on-scene and are currently in the water confirming that the plate placed over the liner seam separation has remained secured and no other leaks are identified.

Residents can find the latest information on the status of the site and response activities at [ProtectingFloridaTogether.gov/PineyPointUpdate](https://www.floridadep.com/ProtectingFloridaTogether.gov/PineyPointUpdate).



<https://content.govdelivery.com/accounts/FLDEP/bulletins/2ccbab6>



CONTACT: DEP Press Office, 850-245-2112, DEPNews@FloridaDEP.gov

Piney Point Update - April 13, 2021

Today, Governor DeSantis announced at DEP's on-site mobile command at Piney Point that he is directing \$15.4 million toward ongoing response efforts. This is the first step towards permanent closure of the facility and ensures the state is ready to take the next steps toward any necessary restoration and mitigation as quickly as possible.



Key status updates and response activities:

- Discharges to Port Manatee remain ceased.
- Approximately 222 million gallons remain in the NGS-South compartment. Elevation and volume will likely fluctuate as innovative technologies are deployed to initiate water treatment.
- DEP continues to monitor and sample surrounding waterways following previous discharges. DEP's [interactive water quality dashboard](#) details sampling locations and corresponding results to evaluate any environmental impact. Results will continue to be posted as soon as they are available.
- There are no reported fish kills in the area.
- The department remains fully engaged in first response activities and is diligently monitoring conditions at the site. At approximately 3:30 p.m., a low-level flow was observed from the concentrated seepage area on the east wall of NGS-South compartment. Dive crews immediately arrived on-scene and are currently in the water confirming that the plate placed over the liner seam separation has remained secured, and no other leaks are identified.



Residents can find the latest information on the status of the site and response activities at ProtectingFloridaTogether.gov/PineyPointUpdate.

<https://content.govdelivery.com/accounts/FLDEP/bulletins/2cc8a67>



CONTACT: DEP Press Office, 850-245-2112, DEPNews@FloridaDEP.gov

Piney Point Update - April 12, 2021

Severe weather passed through the Piney Point site, on Sunday, April 11, producing approximately 2.8 inches of rain and strong winds. At this time, there is no identified damage as a result of the recent storm system. The steel plate repair remains sealed at the seam separation and will continue to be monitored.



Key status updates and response activities:

- Discharges to Port Manatee remain ceased.
- 221 million gallons remain in the NGS-South compartment.
- Piezometers (pictured below) are installed below ground surrounding the NGS-South to detect changes in water pressure within the stack system. This is part of ongoing monitoring in place to help ensure integrity of the stack system.
- DEP continues to monitor and sample surrounding waterways following previous discharges. DEP's [interactive water quality dashboard](#) details sampling locations and corresponding results to evaluate any environmental impact. Results will continue to be posted as soon as they are available.
- There are no reported fish kills in the area.



Residents can find the latest information on the status of the site and response activities at ProtectingFloridaTogether.gov/PineyPointUpdate.

<https://content.govdelivery.com/accounts/FLDEP/bulletins/2cc7965>



FLORIDA DEPARTMENT OF ENVIRONMENTAL PROTECTION

CONTACT: DEP Press Office, 850-245-2112, DEPNews@FloridaDEP.gov

Piney Point Update - April 11, 2021

DEP is managing increased stormwater on-site due to scattered heavy rain and wind forecasted through tomorrow morning. Teams were on-site all night and continue to coordinate with state meteorologists throughout the weather event.



Yesterday, 217 million gallons remained in the NGS-South compartment. The site received 0.6 inches of rain, thus increasing the volume in the compartment to 221 million gallons. The steel plate repair is currently sealing the seam separation at this time and will continue to be monitored throughout the storms.

Key status updates and response activities:

- At this time, discharges to Port Manatee are still ceased.
- Sampling efforts and monitoring are ongoing. DEP's [interactive water quality dashboard](#) details sampling locations and corresponding results to evaluate any environmental impacts to Tampa Bay from the Piney Point discharges. Results will continue to be posted as soon as they are available.

Residents can find the latest information on the status of the site and response activities at ProtectingFloridaTogether.gov/PineyPointUpdate.

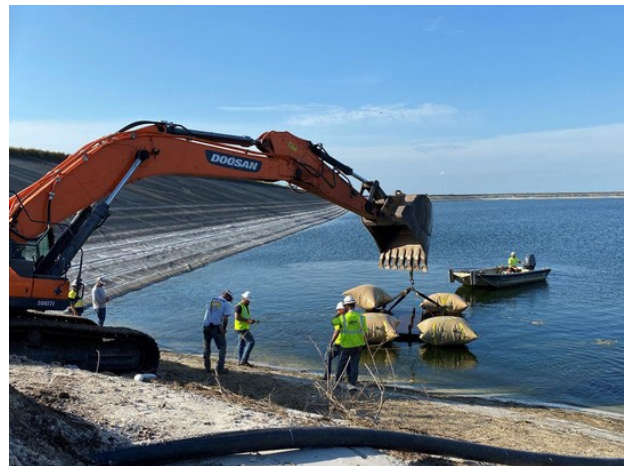
<https://content.govdelivery.com/accounts/FLDEP/bulletins/2cc52f1>



CONTACT: DEP Press Office, 850-245-2112, DEPNews@FloridaDEP.gov

Piney Point Update - April 10, 2021

This week, DEP deployed diving companies and submersible cameras that identified a seam separation on the east wall of the NGS-South. Dive operations have strategically placed a steel plate on the seam separation to temporarily repair this identified source of concentrated seepage. At this time, the plate has been installed and we will continue to monitor the success of this repair. We continue to work to identify whether there are any additional separations of the liner.



In anticipation of weekend weather forecasts, DEP has made preparations for managing increased stormwater on-site due to anticipated heavy rain and wind. DEP is coordinating with state meteorologists and response teams will remain on-site throughout the foreseen weather event.

Key status updates and response activities:

- At this time, discharges to Port Manatee are still ceased.
- Approximately 217 million gallons remain in the NGS-South compartment. To date, 215 million gallons were discharged to the port.
- Sampling efforts and monitoring are ongoing. DEP's [interactive water quality dashboard](#) details sampling locations and corresponding results to evaluate any environmental impacts to Tampa Bay from the Piney Point discharges. Results will continue to be posted as soon as they are available.
- DEP tasked two innovative technology companies to initiate nutrient reduction and removal treatments from water on-site prior to discharging to Port Manatee. These technologies are on-site preparing for operation.

Residents can find the latest information on the status of the site and response activities at ProtectingFloridaTogether.gov/PineyPointUpdate.

<https://content.govdelivery.com/accounts/FLDEP/bulletins/2cc413d>



FLORIDA DEPARTMENT OF ENVIRONMENTAL PROTECTION

CONTACT: DEP Press Office, 850-245-2112, DEPNews@FloridaDEP.gov

Piney Point Update - April 9, 2021

All discharges of untreated water to Port Manatee are currently ceased. As we deploy innovative technology on-site, the Florida Department of Environmental Protection's (DEP) goal is to ensure that any future required discharges to the port are treated to reduce nutrients entering surrounding waterways and minimize possible ecological impacts such as algal blooms.

DEP continues to monitor and sample surrounding waterways following previous discharges from the NGS-South compartment to Port Manatee. Localized impacts to water quality were observed by DEP in the immediate zone of discharge at the port, which is to be expected at this time. By ceasing untreated discharge, ecological impacts to the area will be mitigated. Sampling efforts and monitoring are ongoing. There are no reported fish kills in the area.

Key status updates and response activities:

- At this time, discharges to Port Manatee have ceased.
- Approximately 223 million gallons remain in the NGS-South compartment.
- To date, approximately 215 million gallons have been discharged to the port.
- DEP tasked two innovative technology companies to initiate nutrient reduction and removal treatments from water on-site prior to discharging to Port Manatee.
- DEP deployed diving companies and submersible cameras and identified a seam separation on the east wall of the compartment. Field operations teams are working around the clock to implement necessary repairs to the liner to contain the flow. The flow of the seepage has reduced and remains contained onsite in the facility's lined stormwater management system.
- DEP's [interactive water quality dashboard](#) details sampling locations and corresponding results to evaluate any environmental impacts to Tampa Bay from the Piney Point discharges. Results will continue to be posted as soon as they are available.

Residents can find the latest information on the status of the site and response activities at ProtectingFloridaTogether.gov/PineyPointUpdate.

<https://content.govdelivery.com/accounts/FLDEP/bulletins/2cc253e>



CONTACT: DEP Press Office, 850-245-2112, DEPNews@FloridaDEP.gov

Piney Point Update - April 8, 2021

Within the past 24 hours, DEP has reduced discharge flow to Port Manatee by more than 90%. Teams are now deploying nutrient reduction and removal treatments of the water on-site to address any required discharges in the future. This will significantly reduce nutrient loading to Port Manatee and help minimize water quality impacts.

Yesterday, DEP deployed diving companies and submersible cameras in the NGS-South compartment and identified a seam separation on the east wall of the compartment. DEP and contracted crews continue to work around the clock to implement necessary repairs to the liner to contain the flow. Field operations teams are actively assessing the remainder of the system to continue stabilization and water treatment efforts. These efforts have enabled DEP to move forward with these important steps to reduce the current discharge volume of untreated water and ensure future discharges are pre-treated.

DEP continues to work with its partners to implement solutions in the waterways surrounding Piney Point to combat potential harmful algal blooms and continues sampling the water quality network in this area daily.

Key status updates and response activities:

- The reduced rate of discharge to Port Manatee is now estimated to be less than 5 million gallons per day.
- Approximately 232 million gallons remain in the NGS-South compartment.
- To date, approximately 202 million gallons have been discharged to the port.
- DEP tasked two innovative technology companies to initiate nutrient reduction and removal treatments from water on-site prior to discharging to Port Manatee.
- DEP is working to repair the one identified area where there is concentrated seepage from the east wall of the NGS-South compartment. The flow of the seepage has reduced and remains contained onsite in the facility's lined stormwater management system.
- DEP's [interactive water quality dashboard](#) details sampling locations and corresponding results to evaluate any environmental impacts to Tampa Bay from the Piney Point discharges. Results will continue to be posted as soon as they are available.

- Manatee County Emergency Management reopened U.S. Highway 41 and Buckeye Road to traffic and lifted the local evacuation order enabling local residents and businesses to return home safely.

Residents can find the latest information on the status of the site and response activities at [ProtectingFloridaTogether.gov/PineyPointUpdate](https://protectingfloridatogether.gov/PineyPointUpdate).

<https://content.govdelivery.com/accounts/FLDEP/bulletins/2cbf7c3>



FLORIDA DEPARTMENT OF ENVIRONMENTAL PROTECTION

CONTACT: DEP Press Office, 850-245-2112, DEPNews@FloridaDEP.gov

Piney Point Update - April 7, 2021

The Florida Department of Environmental Protection (DEP) tasked two innovative technology companies to initiate nutrient reduction and removal treatments from water on-site prior to discharging to Port Manatee. DEP continues to work with its partners to implement solutions in the waterways surrounding Piney Point to combat potential harmful algal blooms.

Key status updates and response activities:

- Approximately 258 million gallons remain in the NGS-South compartment.
- More than 38 million gallons per day are being removed from the NGS-South compartment through pumps and other water management activities.
- Controlled discharges of mixed saltwater from NGS-South compartment to Port Manatee are ongoing to reduce the water volume and pressure, and stabilize the system. To date, approximately 173 million gallons have been discharged to the port.
- The department is working to repair the one identified area where there is concentrated seepage from the east wall of the NGS-South compartment. The flow of the seepage has reduced and remains contained onsite in the facility's lined stormwater management system.
- DEP's [interactive water quality dashboard](#) details sampling locations and corresponding results to evaluate any environmental impacts to Tampa Bay from the Piney Point discharges. The most recent results show sampling locations in Tampa Bay are attaining marine water quality standards; however, sampling from areas surrounding the active discharge point in Port Manatee shows elevated levels of phosphorus.
- Results will continue to be posted as soon as they are available.
- Yesterday, Manatee County Emergency Management reopened U.S. Highway 41 to traffic and lifted the local evacuation order enabling local residents and businesses to return home safely.

Residents can find the latest information on the status of the site and response activities at ProtectingFloridaTogether.gov/PineyPointUpdate.

For information on public safety and evacuation guidance in this area, please visit MyManatee.org.

<https://content.govdelivery.com/accounts/FLDEP/bulletins/2cbb3ec>



CONTACT: DEP Press Office, 850-245-2112, DEPNews@FloridaDEP.gov

Piney Point Update - April 6, 2021

Yesterday, the Florida Department of Environmental Protection (DEP) launched an [interactive water quality dashboard](#) detailing sampling locations and corresponding results to evaluate any environmental impacts to Tampa Bay from the Piney Point discharges. This enables citizens to have access to water quality data collected in response to this incident as soon as it's available. **Sampling results received to date meet all water quality standards.**

DEP continues to work in conjunction with the U.S. Environmental Protection Agency (EPA), the Florida Division of Emergency Management (FDEM), the Florida Department of Health (DOH) and local county governments to maximize water management options to remove water from the NGS-South compartment, relieve pressure and stabilize the system.

Key status updates and response activities:

- Approximately 303 million gallons remain in the NGS-South compartment. More than 35 million gallons per day are being removed from the NGS-South compartment through pumps, vacuum trucks and other water management activities.
- Controlled discharges from NGS-South compartment to Port Manatee are ongoing to reduce the volume in order to lessen the pressure and stabilize the system. To date, approximately 165 million gallons have been discharged to the port.
- There is **one** area of concentrated seepage from the east wall of the NGS-South compartment. DEP continues to monitor the area for any developments. The water from this seepage remains contained onsite in the facility's lined stormwater management system.
- The uncontrolled discharge to Piney Point Creek ceased Saturday, April 3, 2021. It has not resumed.
- DOH and DEP staff visited the site yesterday to collect samples to obtain the latest water quality information on the water in the NGS-South compartment, including radiologicals. These results will be published [here](#) as soon as available. All water quality information to date concludes that this water is **NOT** radioactive.
- Last night, DEP in conjunction with the EPA, the FDEM and Manatee County brought three additional pumps online to expedite water removal efforts from the NGS-South compartment. DEP continues to maximize every opportunity available at the site to relieve pressure and stabilize the compartment.

- Statewide, DEP has prioritized research and supporting the use of innovative technologies for water quality protection and restoration. This week, DEP established a professional working group to collaborate with private and public partners to identify and deploy innovative technologies and solutions to aid in nutrient removal efforts for water in the containment areas at the Piney Point facility. This group will also address options for treatment technologies for surface water discharge points in order to prevent or minimize algal blooms.

Residents can find the latest information on the status of the site and response activities at [ProtectingFloridaTogether.gov/PineyPointUpdate](https://protectingfloridatogether.gov/PineyPointUpdate).

For information on public safety and evacuation guidance in this area, please visit [MyManatee.org](https://mymanatee.org).

<https://content.govdelivery.com/accounts/FLDEP/bulletins/2cb7ede>



CONTACT: DEP Press Office, 850-245-2112, DEPNews@FloridaDEP.gov

Piney Point Update - April 5, 2021

There have been news reports of a second area of seepage from the east wall of the NGS-South compartment at Piney Point. These reports are unsubstantiated. A technical working group, including engineers and dam safety specialists from the Florida Department of Environmental Protection (DEP), the Florida Division of Emergency Management (DEM), the Southwest Florida Water Management District, the Army Corps of Engineers and additional third-party engineers, was on-site today evaluating conditions and determined the site was safe to continue work.

Key status updates and response activities:

- The department continues to monitor the **one** identified area where there is concentrated seepage from the east wall of the NGS-South compartment. The water from this seepage remains contained onsite in the site's lined stormwater management.
- The uncontrolled discharge to Piney Point Creek has ceased.
- Controlled discharges from NGS-South compartment to Port Manatee are ongoing to reduce the volume in order to reduce pressure and stabilize the system.
- In addition to the controlled discharge to Port Manatee, the DEM has also deployed at least 26 pumps for use of water removal from the NGS-South compartment and other water management activities at the site. They have also deployed 10 vacuum trucks.
- More than 35 million gallons per day are being removed from the NGS-South compartment through these combined water activities.
- DEP has collaborated with Manatee, Hillsborough and Pinellas counties, and the Tampa Bay Estuary Program, to identify additional sampling locations around Port Manatee and the adjacent coastline. An additional five sampling locations have been added. Beginning today, that makes a total of 11 locations that will be monitored daily by the department. This monitoring includes sampling to determine changes in salinity, dissolved oxygen, clarity, nutrient levels, turbidity, radionuclides and other variables that will determine any changes in baseline water quality status in this area. The counties will be sampling additional separate site locations. To date results have been received for dissolved oxygen, salinity and pH, all of which meet water quality standards. Additional water quality information, including additional parameters, will be published [here](#) as it is available in the coming days.

- Department staff went out to the site today to collect samples to obtain the latest water quality information on the water in the NGS-South compartment, including radiologicals. All water quality information concludes that this water is **NOT** radioactive. These results will be published [here](#) as soon as available.
- The department is also working to deploy innovative technologies to remove nutrients from the water in NGS-South compartment prior to discharge and that could be implemented to prevent or minimize algal blooms in Port Manatee and surrounding areas.

Residents can find the latest information on the status of the site and response activities at ProtectingFloridaTogether.gov/PineyPointUpdate.

For information on public safety and evacuation guidance in this area, please visit MyManatee.org.

<https://content.govdelivery.com/accounts/FLDEP/bulletins/2cb4a51>