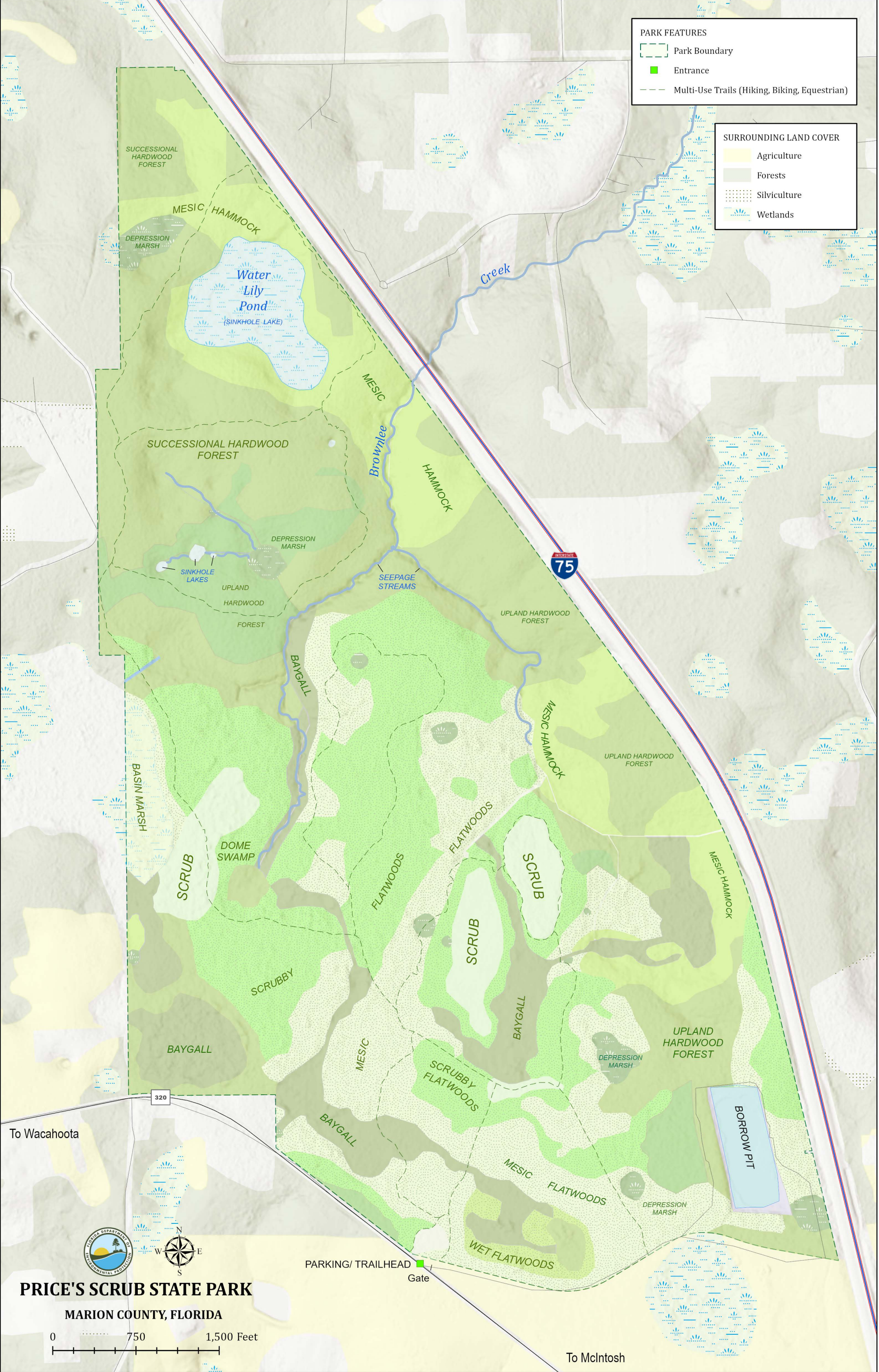


PARK FEATURES

- Park Boundary
- Entrance
- Multi-Use Trails (Hiking, Biking, Equestrian)

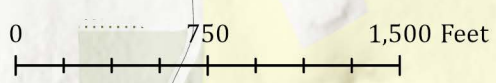
SURROUNDING LAND COVER

- Agriculture
- Forests
- Silviculture
- Wetlands

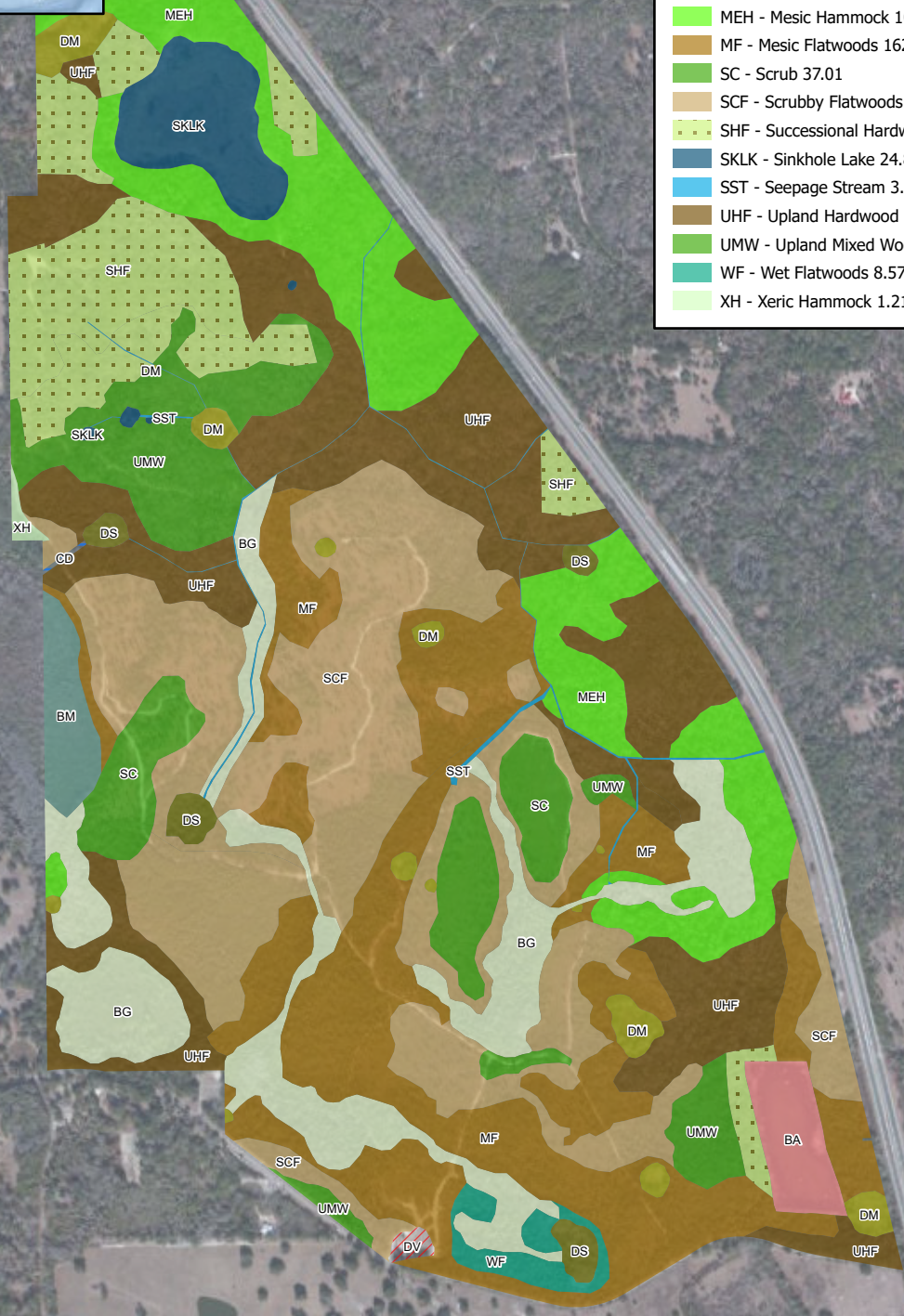
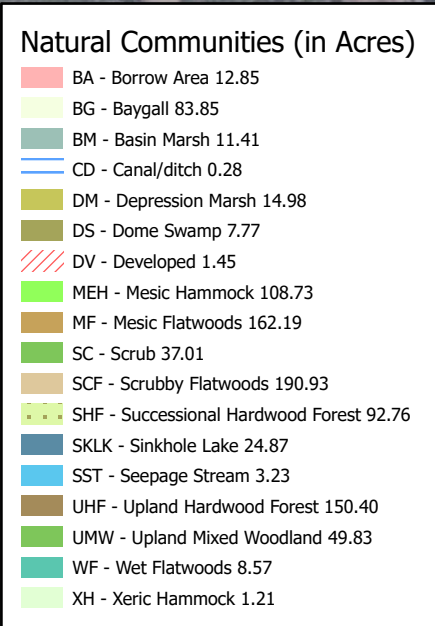


PRICE'S SCRUB STATE PARK

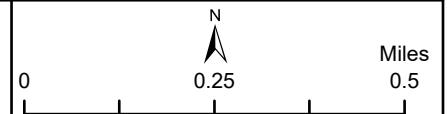
MARION COUNTY, FLORIDA



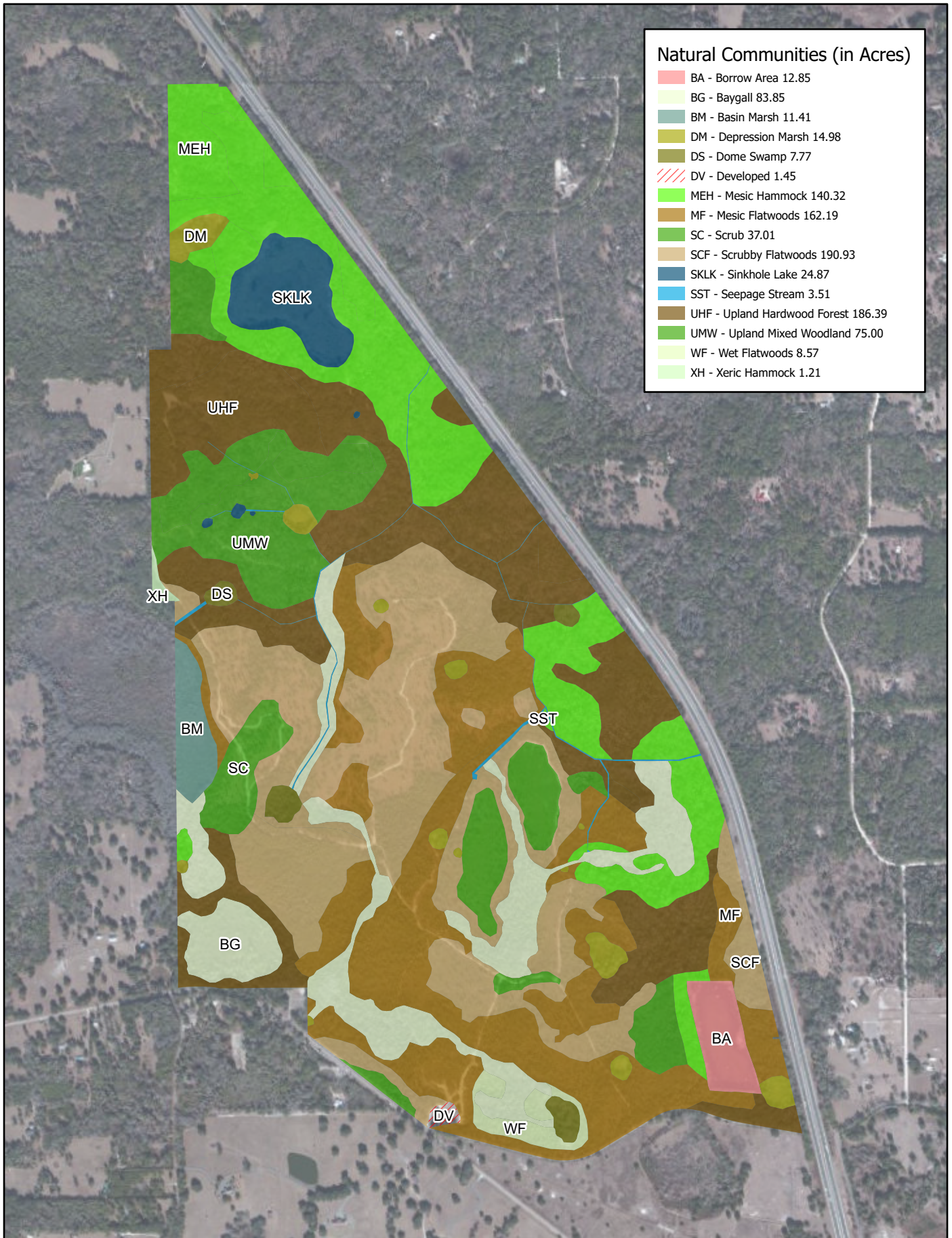
To McIntosh



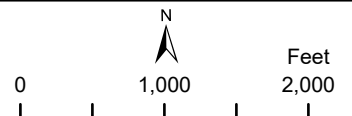
PRICE'S SCRUB STATE PARK Natural Communities - Existing Conditions



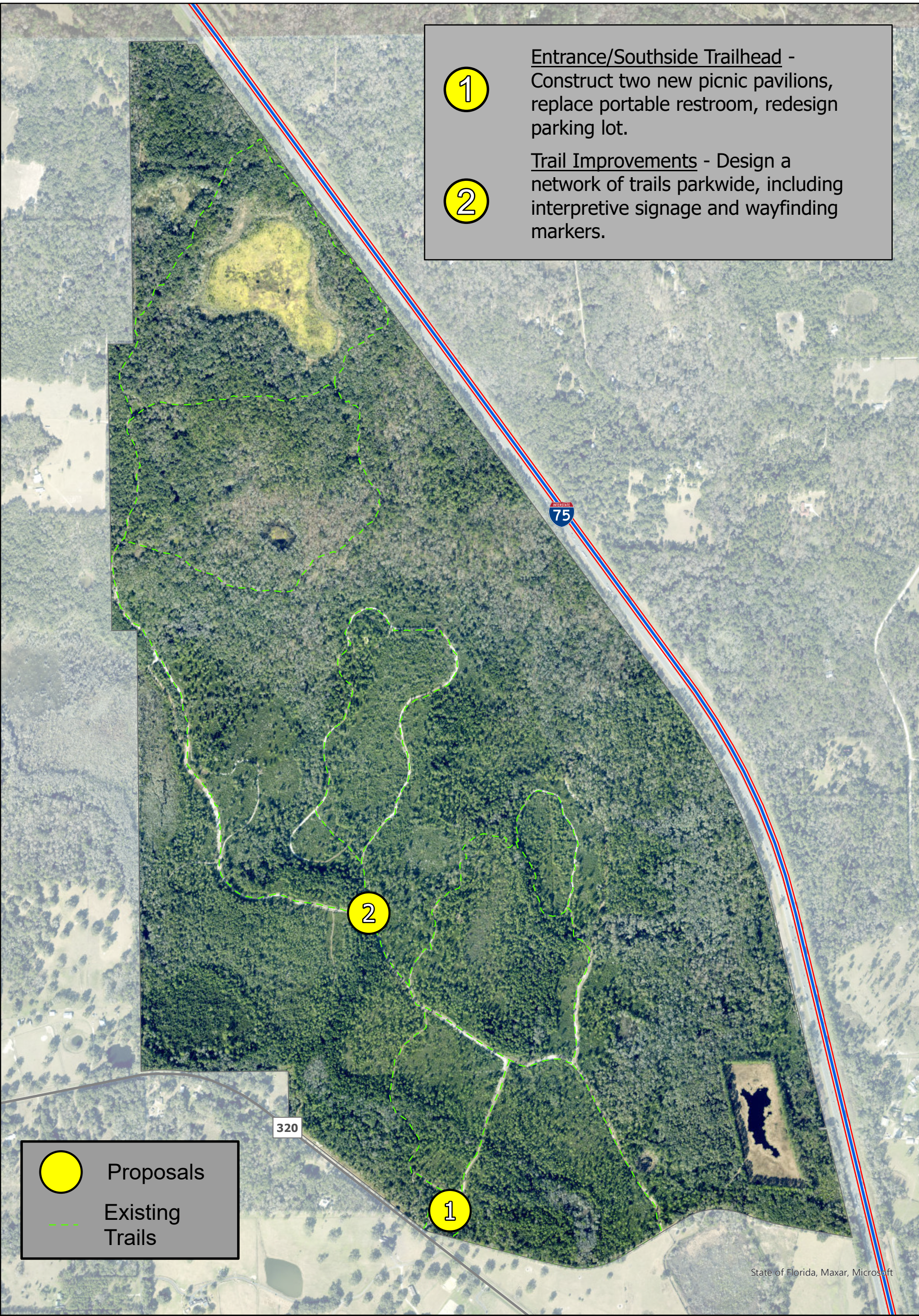
This graphical representation is provided for informational purposes and should not be considered authoritative for navigational, engineering, legal, and other uses.



PRICE'S SCRUB STATE PARK
Natural Communities - Desired Future Conditions



This graphical representation is provided for informational purposes and should not be considered authoritative for navigational, engineering, legal, and other uses.



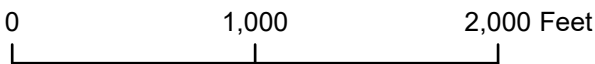
- 1** Entrance/Southside Trailhead - Construct two new picnic pavilions, replace portable restroom, redesign parking lot.
- 2** Trail Improvements - Design a network of trails parkwide, including interpretive signage and wayfinding markers.

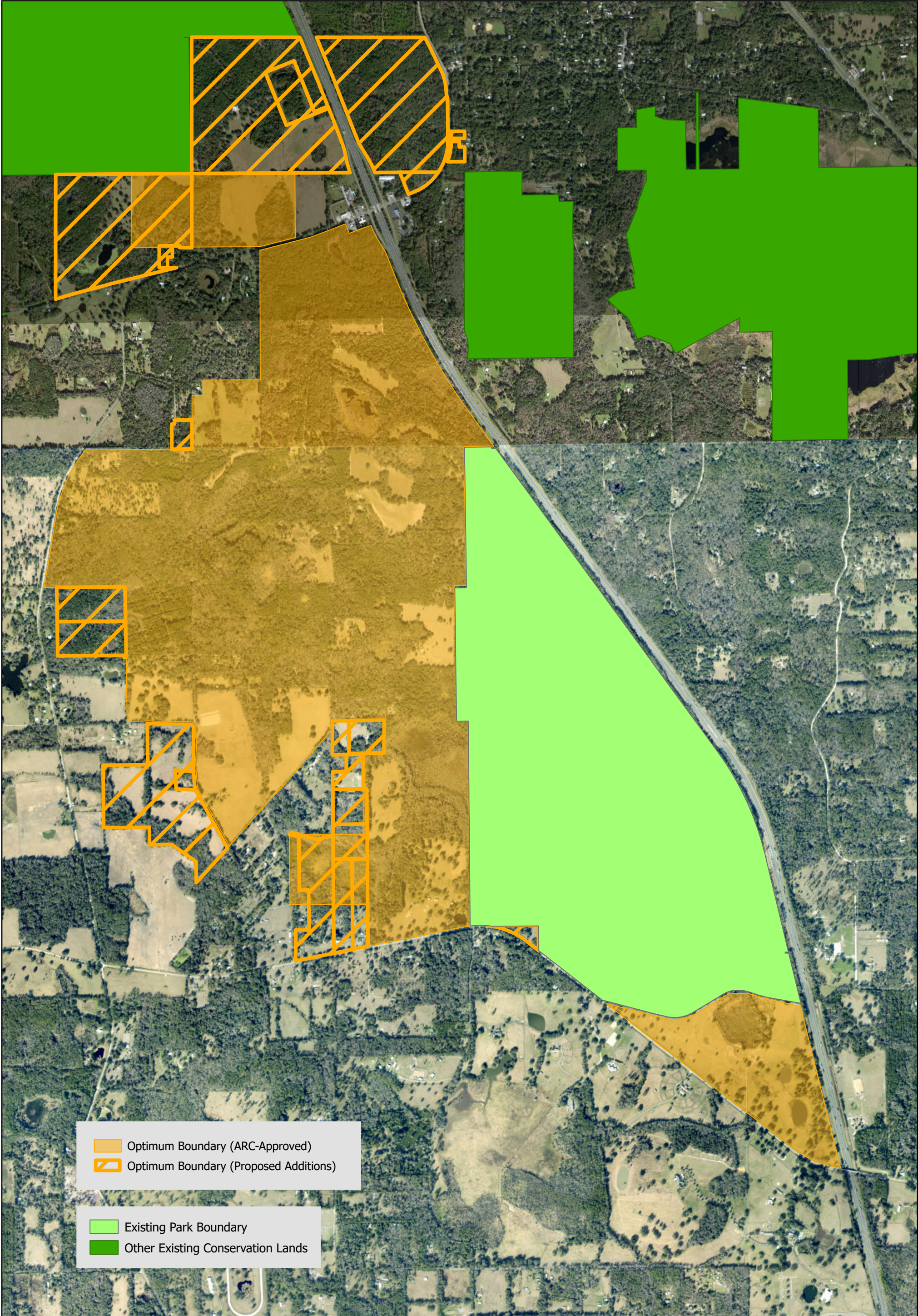
 Proposals
 Existing Trails



State of Florida, Maxar, Microsoft


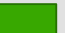


Price's Scrub State Park
 Conceptual Land Use Plan





 Optimum Boundary (ARC-Approved)
 Optimum Boundary (Proposed Additions)

 Existing Park Boundary
 Other Existing Conservation Lands



Price's Scrub State Park

Optimum Boundary Map

