

# Florida's Statewide Comprehensive Outdoor Recreation Plan

# SCORP

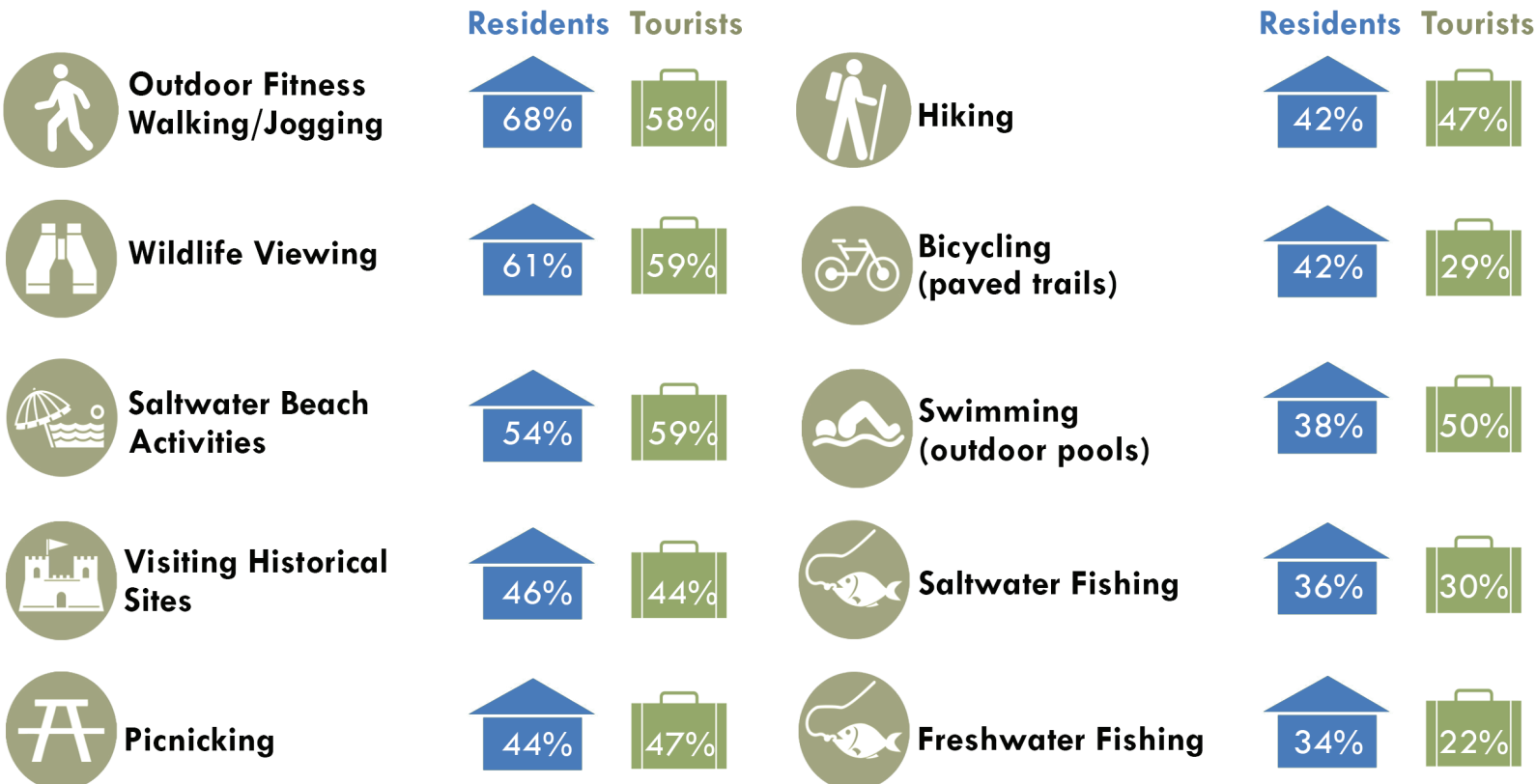


## WHAT IS SCORP?

Simply put, the Statewide Comprehensive Outdoor Recreation Plan (SCORP) is Florida's blueprint for outdoor recreation. It provides guidance to communities, businesses and organizations to meet the recreation demands of Florida's diverse and growing population.

## FLORIDA'S TOP OUTDOOR RECREATION ACTIVITIES

Household Participation Rates



# Florida's Statewide Comprehensive Outdoor Recreation Plan

# SCORP

SCORP HELPS FLORIDA'S COMMUNITIES BALANCE RECREATION SUPPLY AND DEMAND

**15**  
Million

15 million acres available for recreation

**20**  
Million

Third largest state in population

**112**  
Million

Annual visitation exceeds 112 million

## TOP PRIORITIES



Promoting Health Benefits & Wellness



Improving Public Access, Accessibility & Connectivity

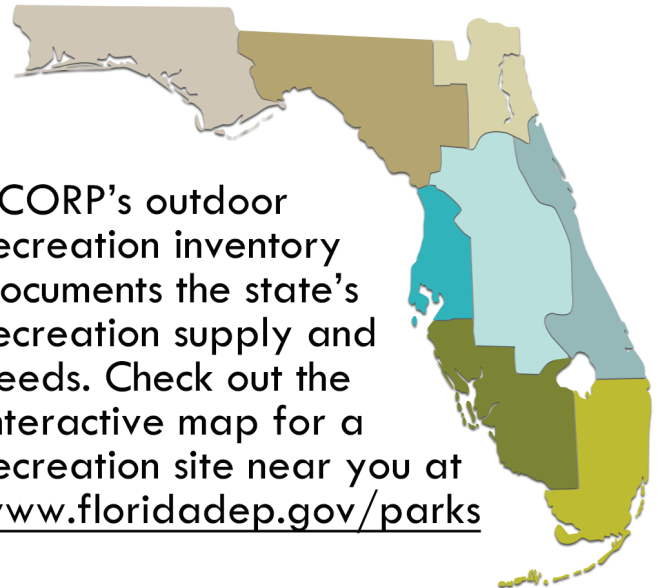


Promoting Economic Benefits & Ecotourism



Resource Management & Stewardship

## OUTDOOR RECREATION INVENTORY



SCORP's outdoor recreation inventory documents the state's recreation supply and needs. Check out the interactive map for a recreation site near you at [www.floridadep.gov/parks](http://www.floridadep.gov/parks)

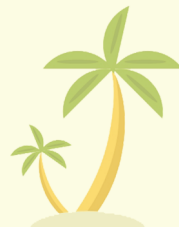
## OUTDOOR RECREATION ECONOMIC IMPACT

Total Economic Output \$145(billion)

Visitor Spending \$70(billion)

State/Local Taxes \$3.5(billion)

Jobs 1.2(million)



SCORP encompasses jobs and tourism, health and fitness, wildlife and conservation, quality of life and sustainability.

Visit [www.floridadep.gov/parks/florida-scorp-outdoor-recreation-florida](http://www.floridadep.gov/parks/florida-scorp-outdoor-recreation-florida) to learn more about Florida's outdoor recreation planning.



**FLORIDA State Parks**  
...the Real Florida<sup>SM</sup>

