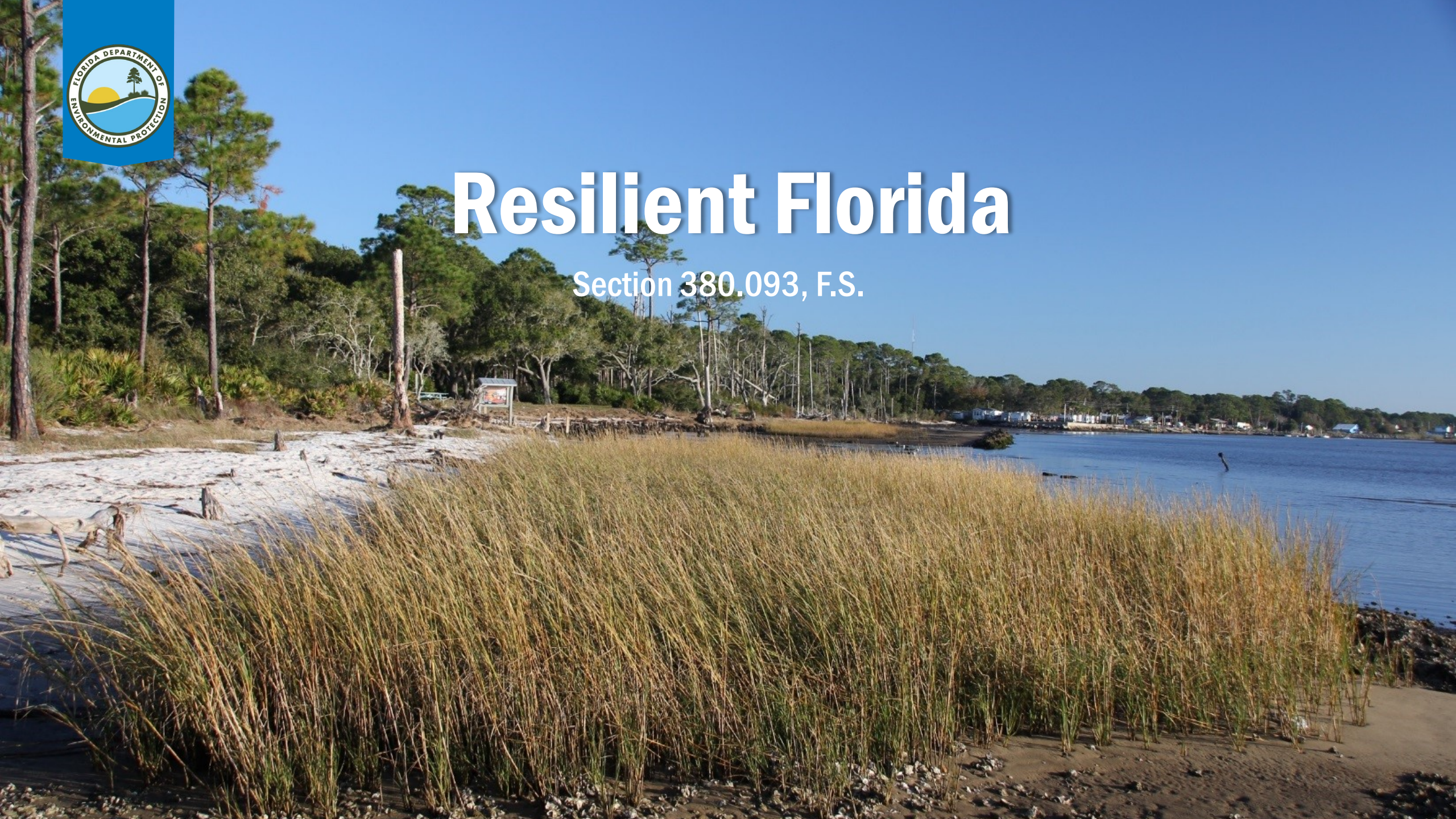




Resilient Florida

Section 380.093, F.S.





Housekeeping

Thank you for coming today!

- Please introduce yourself in the chat: Name and organization
- This webinar will be recorded; we'll send a follow-up email with a link ASAP.
- The presentation is available as a PDF attached in the meeting info.
- Write your questions in the chat. We will be answering questions from the chat.
- If you have any other questions after the webinar, contact

Resilience@FloridaDEP.gov



Resilient Florida

- **5 major sections**
 - **“Resilient Florida Grant Program” Planning + Critical Asset Adaptation Grants (s. 380.093 (1)(3), F.S.)**
 - **Comprehensive Statewide Flood Vulnerability Data Set and Assessment (s. 380.093 (1)(4), F.S.)**
 - **Statewide Flooding and Sea Level Rise Resilience Plan (s. 380.093 (1)(5), F.S.)**
 - **Regional Resilience Entities (s. 380.093 (1)(6), F.S.)**
 - **Florida Flood Hub (s. 380.093 (2), F.S.)**



Resilient Florida Grant Program

- Focused on planning
 - Comp plan amendments, especially compliance with the Peril of Flood statute
 - Vulnerability assessments
 - Adaptation/resilience plans
 - Projects to adapt critical assets

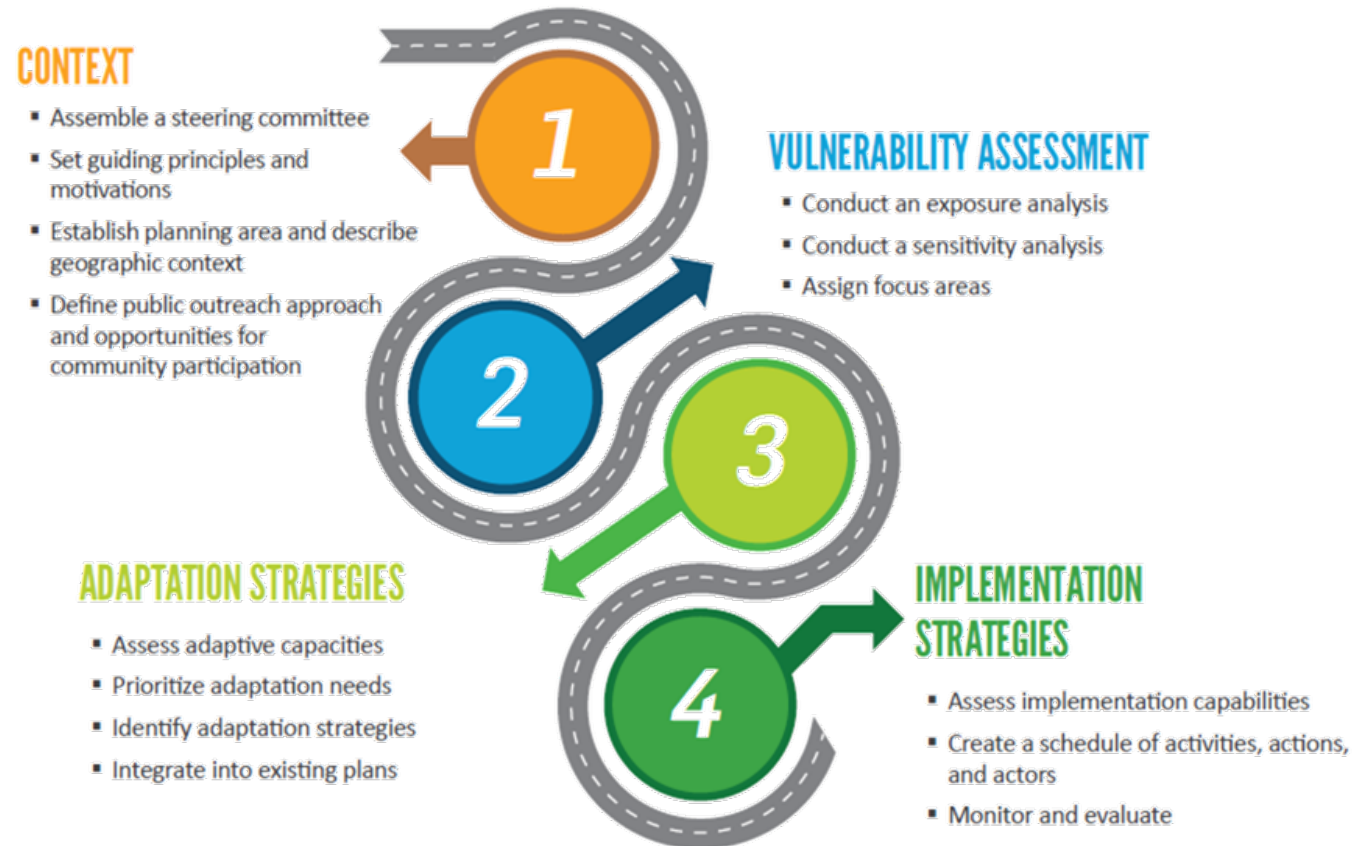


Figure 1. Communities can follow this roadmap of steps to create an adaptation plan.



Resilient Florida Grant Program

Consistent vulnerability assessments

- Will comprise the Statewide Vulnerability Assessment and be the basis for the Statewide Resilience Plan
- Encompass entire city or county and all critical assets
- Use most recent publicly available DEM and generally accepted analysis and modeling
- Address Peril of Flood compliance (if applicable)
- Assess flooding using, at least, Intermediate Low and Intermediate High scenarios from NOAA 2017 for at least 2040 and 2070
 - Tidal flooding, including future high tide flooding
 - Current and future storm surge flooding
 - Rain-fall induced flooding to the extent practicable
 - Compound flooding



Resilient Florida Grant Program

Project types and funding

1. Peril of Flood compliance
2. Vulnerability assessments
3. Adaptation/resilience plans
4. **Projects to adapt critical assets**



- “Planning grants”
- \$20,000,000 from Gov and legislature
- No cost share required
- Reviewed and ranked by staff



- “Implementation/adaptation grants”
- \$500,000,000 from American Rescue Plan Act
- Tier system from Section 5 will be used to prioritize



Resilient Florida Grant Program

Projects to adapt critical assets

Critical Assets (s. 380.093 (1)(2) Definitions)

1. Transportation assets and evacuation routes

- Airports, bridges, bus terminals, ports, major roadways, marinas, rail facilities, railroad bridges

2. Critical infrastructure

- Wastewater treatment facilities & lift stations, stormwater treatment facilities & pump stations, drinking water facilities, water utility conveyance systems, electric production & supply facilities, solid & hazardous waste facilities, military installations, communications facilities, disaster debris management sites

3. Critical community and emergency facilities

- Schools, colleges, universities, community centers, correctional facilities, disaster recovery centers, emergency medical service facilities, emergency operation centers, fire stations, health care facilities, hospitals, law enforcement facilities, local government facilities, logistical staging areas, affordable public housing, risk shelter inventory, state government facilities

4. Natural, cultural, and historical resources

- Conservation lands, parks, shorelines, surface waters, wetlands, historical and cultural assets



Statewide Flooding & Sea Level Rise Resilience Plan

- 3-year rolling plan of projects taken from vulnerability assessments
- Year 1 Preliminary Plan uses already completed local vulnerability assessments that comply with the requirements in s. 380.093 (3), F.S.
- Year 2 will update the Year 1 plan
- Year 3 and following will use projects identified in the Statewide Vulnerability Assessment
- Counties and municipalities, regional resilience entities (on behalf of a member), WMDs and flood control districts may submit projects to DEP starting 9/1/21.



Statewide Flooding and Sea Level Rise Resilience Plan

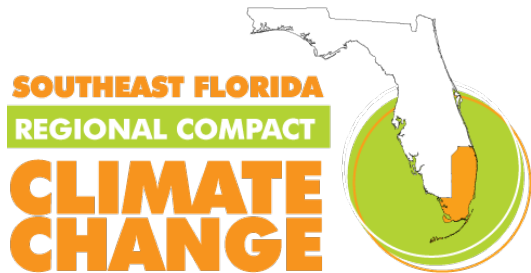
Cont'd.

- Minimum 50% cost share unless the applicant is a “financially disadvantaged small community” as defined in the statute
- Projects must be identified in a vulnerability assessment that complies with the requirements in s. 380.093 (3), F.S.
- The tier system in the statute will be used to prioritize all projects
- Ranked projects will be submitted to the legislature for funding in FY 22-23



Regional Resilience Entities

- Funding for regional resilience entities to assist communities and coordinate intergovernmental solutions
 - Technical assistance
 - Coordinate multijurisdictional vulnerability assessments
 - Develop project proposals to go into the Resilience Plan





Florida Flood Hub

- Designates the College of Marine Science at USF to serve as the lead institution to engage other academic and research institutions, private partners, and financial sponsors to coordinate efforts to support applied research and innovation to address the flooding and sea level rise challenges of the state.



	Resilient Florida Grant Program		Comprehensive Statewide Flood Vulnerability Data Set and Assessment		Statewide Flooding and Sea Level Rise Resilience Plan	Regional Resilience Entities	
	<i>Planning Grants</i>	<i>Resilience Projects</i>	<i>Data Set</i>	<i>Assessment</i>			
Activities	Provides funding for comprehensive plan amendments, Peril of Flood, vulnerability assessments, adaptation plans, and projects to adapt critical assets to the effects of flooding and sea level rise. Provides a methodology for completing vulnerability assessments.	“The nonrecurring sum of \$500,000,000 from the Resilient Florida Trust Fund is appropriated in Fixed Capital Outlay for the Resilient Florida Grant Program authorized in Senate Bill 1954.”	Provides for the collection and aggregation of data from vulnerability assessments that are existing , those completed from grant program, and to fill any gaps.	This section provides for the incorporation of the data collected for the data set and other analyses into a statewide sea level rise vulnerability assessment.	Statewide Flooding and Sea Level Rise Resilience Plan will be developed and submitted to the Governor and Legislature. The Plan will work on a 3-year rolling planning horizon and will consist of ranked projects that address the risks of flooding and sea level rise identified in the Statewide Flood and Sea Level Rise Vulnerability Assessment.	Provides funding to regional entities that are established by local governments to provide technical assistance on multijurisdictional projects.	Provides for the establishment of the Florida Flood Hub at USF's College of Marine Science. The Flood Hub will serve as the lead institution and will engage other institutions and partners to coordinate research and innovation around the flooding and sea level rise challenges facing the state.
Deadlines	Application portal opens: July 1, 2021. Applications due September 1, 2021		Data Set due July 1, 2022.	Assessment due July 1, 2023.	Application portal opens: July 1, 2021. Applications Due September 1, 2021. Plan due to EOG/Legislature December 1, 2021. Starting December 1, 2023, the Resilience Plan will be based on the Statewide Assessment.	Application portal Opens: July 1, 2021. Applications due September 1, 2021	Annual Report due July 1, 2022.
Annual Funding							
FY 21-22	\$20,000,000	\$500,000,000	\$4,000,000			\$2,000,000	
FY 22-23 (anticipated)		?	?		Up to \$100,000,000		



Application Process

- Visit the Project Portal to add your project proposal by September 1, 2021.
 - <https://protectingfloridatogether.gov/state-action/grants-submissions>
- Portal proposals will be screened for submission to one of the 3 Resilient Florida grant types: planning, implementation/adaptation, regional resilience entity
- Applicants will be directed to flesh out the details of their project in a specific online form.
- Online forms will be reviewed according to statutory guidelines and prioritized.
- Projects for the Statewide Flooding and Sea Level Rise Resilience Plan will be ranked and submitted to the Legislature by December 1, 2021.



Thank you!

**Contact Whitney Gray at 850-245-2098
or Whitney.Gray@FloridaDEP.gov**