



Contents

Summary.....	3
2018 Project Ledger.....	4
2018 Sub-basin Ledger.....	5
2018 Conservation Easements.....	6
Conservation Easement GIS Map.....	7
Conservation Unit Ledger.....	8
Conservation Unit Land Management Summary...	9

RGP SAJ-105 & Ecosystem Management Agreement

2018 Annual Report

SUMMARY

In 2015, the Florida Department of Environmental Protection executed a second Ecosystem Management Agreement with The St. Joe Company covering 42,889 acres of St. Joe ownership. Subsequently, the Army Corps of Engineers issued SAJ-105 for 43,977 acres including St. Joe ownership as well as other ownership located in the West Bay watershed within Bay County, Florida.

This is the fourth annual report for SAJ 105 and EMA 2. All projects approved under the SAJ-105 EMA 2 criteria area included in the Project Ledger. No projects are in the Individual Project Approval process at the time of this annual report.

Prior to execution of SAJ-105 and EMA 2, two projects were authorized within the subject boundary under the SAJ-86 framework. These projects are depicted in the Conservation Easement map and listed in the following SAJ-105 Project Ledger.

2018 Project Ledger

SUMMARY

The below Projects Ledger reflects projects for which final authorizations have been granted as of December 31, 2018.


Number	Type	Permitting Basin	Sub-basin	Project	Tot Prj Ac	HQ	HQ IMP	LQ	LQIMP	WTL	UPL	Onsite CE	Offsite CE	CU Mit CE	CU CE	CR MIT	Status
1	ERP/NWP	DSMB/BPMB	CCWB	West Bay Business Center Road Crossing 03-300713-004-DF / SAJ-2010-02464(NW-AAK)	2.36	1.39	0.49	0	0	1.41	0.97	21.75	0	0	0	0.43	Complete
2	ERP/NWP	DSMB/BPMB	CCWB	C-Store/ Express Lane @ Hwy 79 & CR 388 03-06141-001 EI/ SAJ-2011-01434 (NW- AAK)	2.21	0.22	0	0.39	0.17	0.6	1.61	0.883	0.81	0	0.92	0.09	Complete
3A	EMA/RGP	BPMB	CCWB	SR 388 Expansion 0354652-002 EA/ SAJ-2009-02897	154.1	7.30 COE 10.13 DEP	5.95 COE 7.47 DEP	23.4	20.67	30.7 COE 33.53 DEP	123.4 COE 120.57 DEP	4.08 COE 5.39 DEP	114.47	0	78.531	17.46	In Progress
3B	EMA/RGP	BPMB	BMC	SR 388 Expansion 0354652-002 EA/ SAJ-2009-02897	48.3	1.55	1.3	28.13	23.2	29.68	18.62	5.18	126.61	0	55.586	13.43	In Progress
3C	EMA/RGP	BPMB	ICW	SR 388 Expansion 0354652-002 EA/ SAJ-2009-02897	2.4	0	0	0.57	0.36	0.57	1.83	0.21	1.847	0	No CU +0.21% to CCWB	0.19	In Progress

Tot Prj Ac Total Project Acres Within Sub-basin
 HQ High Quality Wetlands
 HQ IMP High Quality Wetland Impacts
 LQ Low Quality Wetlands

LQ IMP Low Quality Wetland Impacts
 UPL Uplands
 Onsite CE Onsite Conservation Easements
 Offsite CE Offsite Conservation Easements

CU MIT CE Conservation Unit Mitigation Conservation Easement
 CU CE Conservation Unit Conservation Easement
 CR MIT Mitigation Credits
 WTL Wetland

GP Regional General Permit SAJ-86
 IP Individual Permit

 Impacts have not occurred as of 12/31/18.

2018 Sub-basin Ledger

2018 Sub-basin

Sub-basin	Change?	Tot_A	Tot_LQ	Tot_HQ	Tot_LQ_IMP	%**	Tot_HQ_IMP	%**	Tot_LQ_Remain	Tot_HQ_Remain
Burnt Mill Creek – Doyle Bayou	Y	9168	3098	2289	23.20	0.7	1.3	0.05	3074.8	2287.7
Crooked Creek – West Bay	Y	12,574	3554	3036	20.84	0.5	7.96	.02	3533.16	3027.84
Fannin Bayou – Warren Bayou	N	5793	2226	1580	0	0	0	0	2226	1580
Intercoastal Waterway – West Bay	Y	1617	435	374	0.21	0.05	0	0	434.79	374
Little Burnt Mill Creek	N	12,958	3912	3250	0	0	0	0	3912	3250
Pine Log Creek	N	1867	328	409	0	0	0	0	328	409
* Cumulative through December 31, 2018								Total	13,508.75	10,928.54

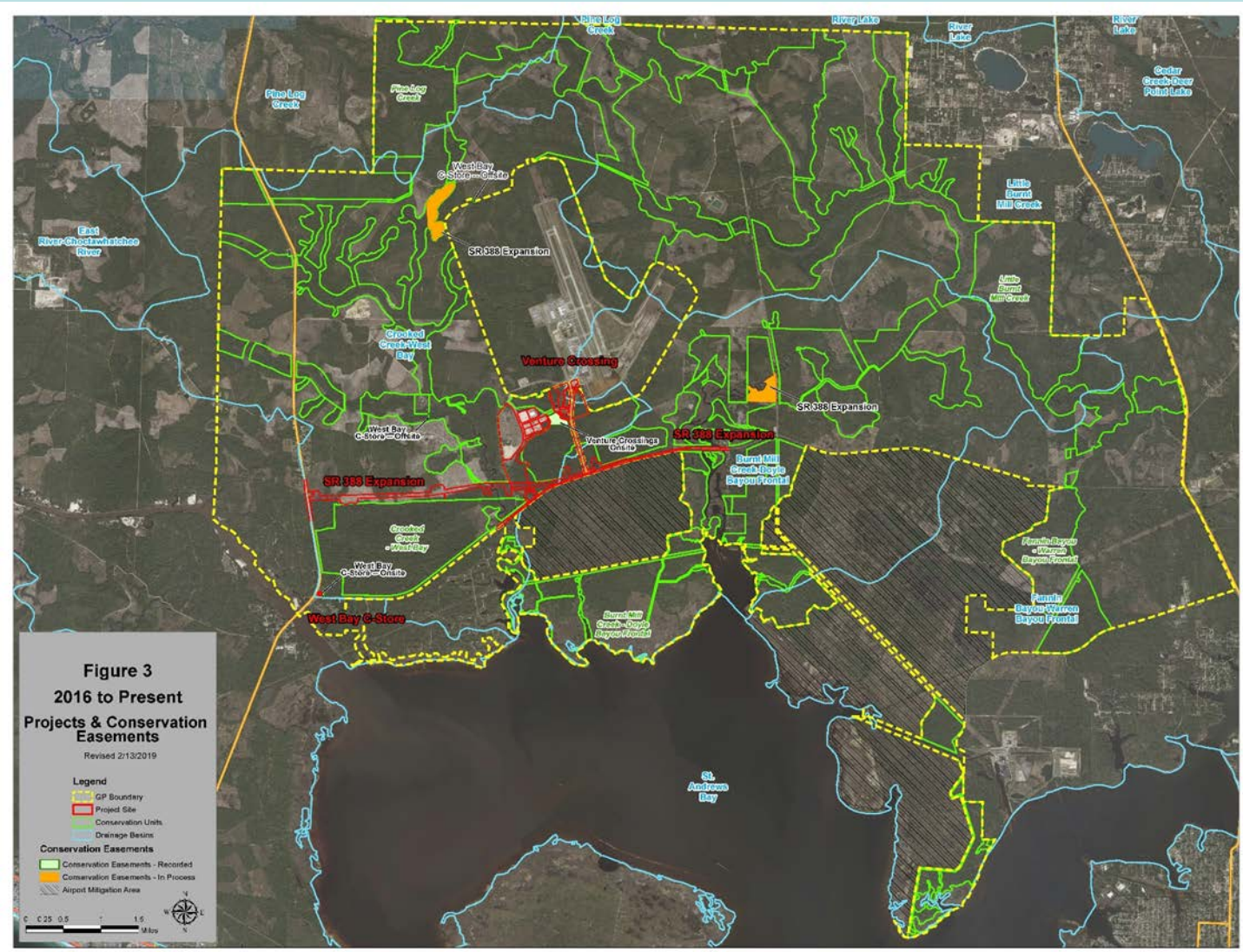
** From Total

2018 Conservation Easements

SUMMARY

No conservation easements were recorded in 2018. All conservation easements associated with the SR 388 expansion are in progress.

GIS Conservation Easement Map



2018 Conservation Unit Ledger

Conservation Unit	Ownership	Conservation Easements	
		Recorded	In Process
		Acres	Acres
Burnt Mill Creek – Doyle Bayou	St. Joe	0	54.66
Crooked Creek – West Bay	St. Joe	24.36	78.52
Fannin Bayou – Warren Bayou	St. Joe	0	0
Intracoastal Waterway – West Bay	St. Joe	0	0*
Little Burnt Mill Creek	St. Joe	0	0
Pine Log Creek	St. Joe	0	0
Total		24.36	133.18

* No CUs in ICW added to CCWB

Conservation Unit Land Management 2018

SUMMARY

Since SAJ-105 and EMA 2 were fully executed in 2015, required management activities have continued within designated Conservation Units. The below is a summary table and map of 2018 land management activities.

