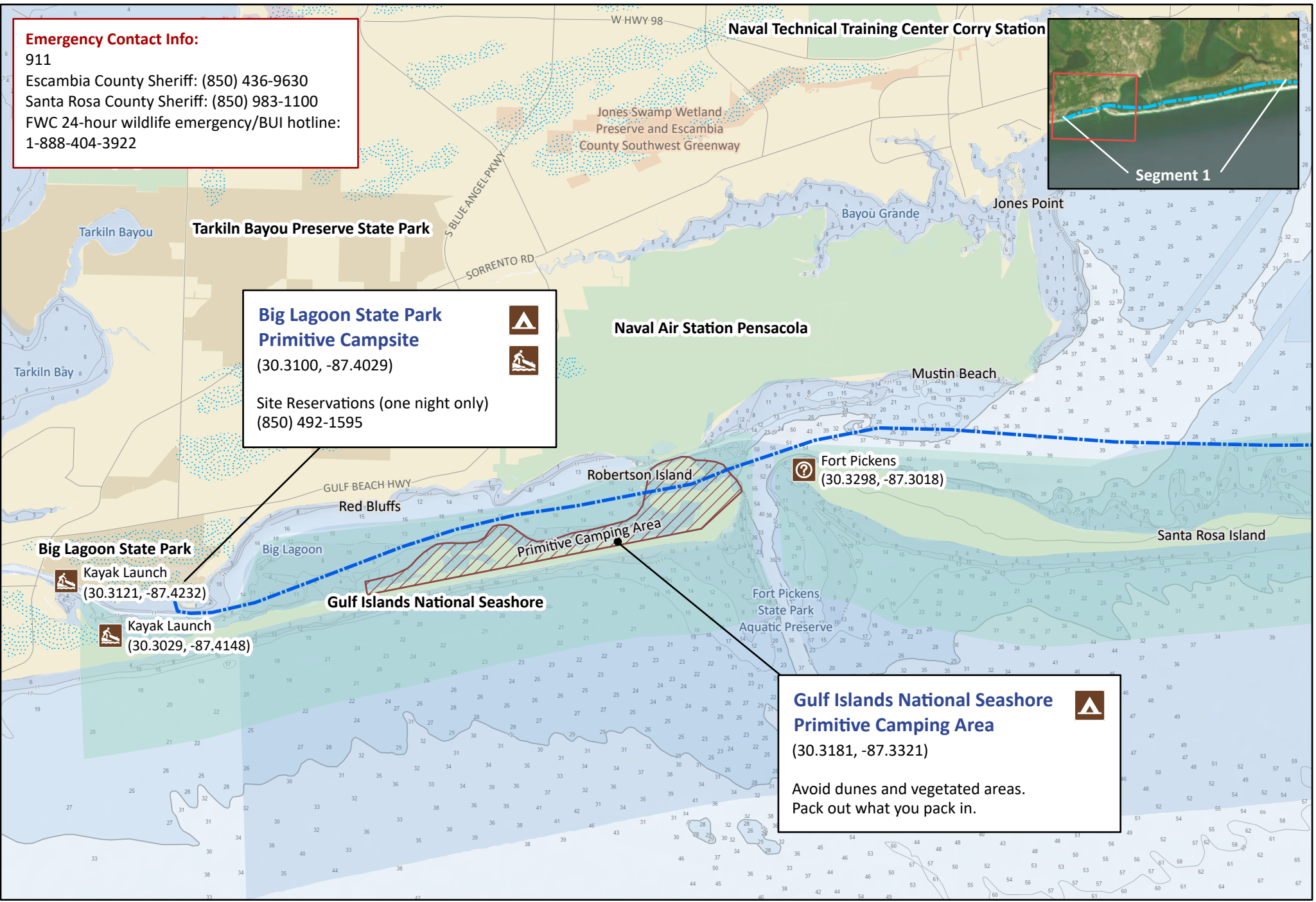


Emergency Contact Info:
 911
 Escambia County Sheriff: (850) 436-9630
 Santa Rosa County Sheriff: (850) 983-1100
 FWC 24-hour wildlife emergency/BUI hotline:
 1-888-404-3922



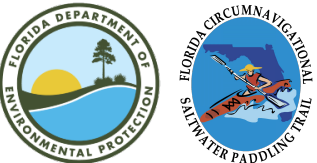
**Big Lagoon State Park
 Primitive Campsite**
 (30.3100, -87.4029)
 Site Reservations (one night only)
 (850) 492-1595



Big Lagoon State Park
 Kayak Launch
 (30.3121, -87.4232)
 Kayak Launch
 (30.3029, -87.4148)



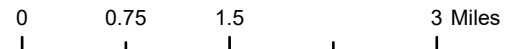
**Gulf Islands National Seashore
 Primitive Camping Area**
 (30.3181, -87.3321)
 Avoid dunes and vegetated areas.
 Pack out what you pack in.



Florida Circumnavigational Saltwater Paddling Trail

Segment 1: Pensacola/Fort Pickens (Map 1 of 3)

Begin: Big Lagoon State Park Distance: 37 miles
 End: Navarre Beach Camping Resort Duration: 3 days



Disclaimer: This guide is intended as an aid to navigation only. A Global Positioning System (GPS) unit is required and persons are encouraged to supplement these maps with NOAA charts or other maps.
 Updated: 11/2022



Emergency Contact Info:
 911
 Escambia County Sheriff: (850) 436-9630
 Santa Rosa County Sheriff: (850) 983-1100
 FWC 24-hour wildlife emergency/BUI hotline:
 1-888-404-3922



**Gulf Islands National Seashore
 Visitor Center**
 (30.3637, -87.1296)



**Gulf Islands National
 Seashore Park**
 (30.3270, -87.1809)



Gulf Islands National Seashore
 (30.3388, -87.1457)



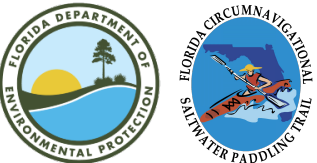
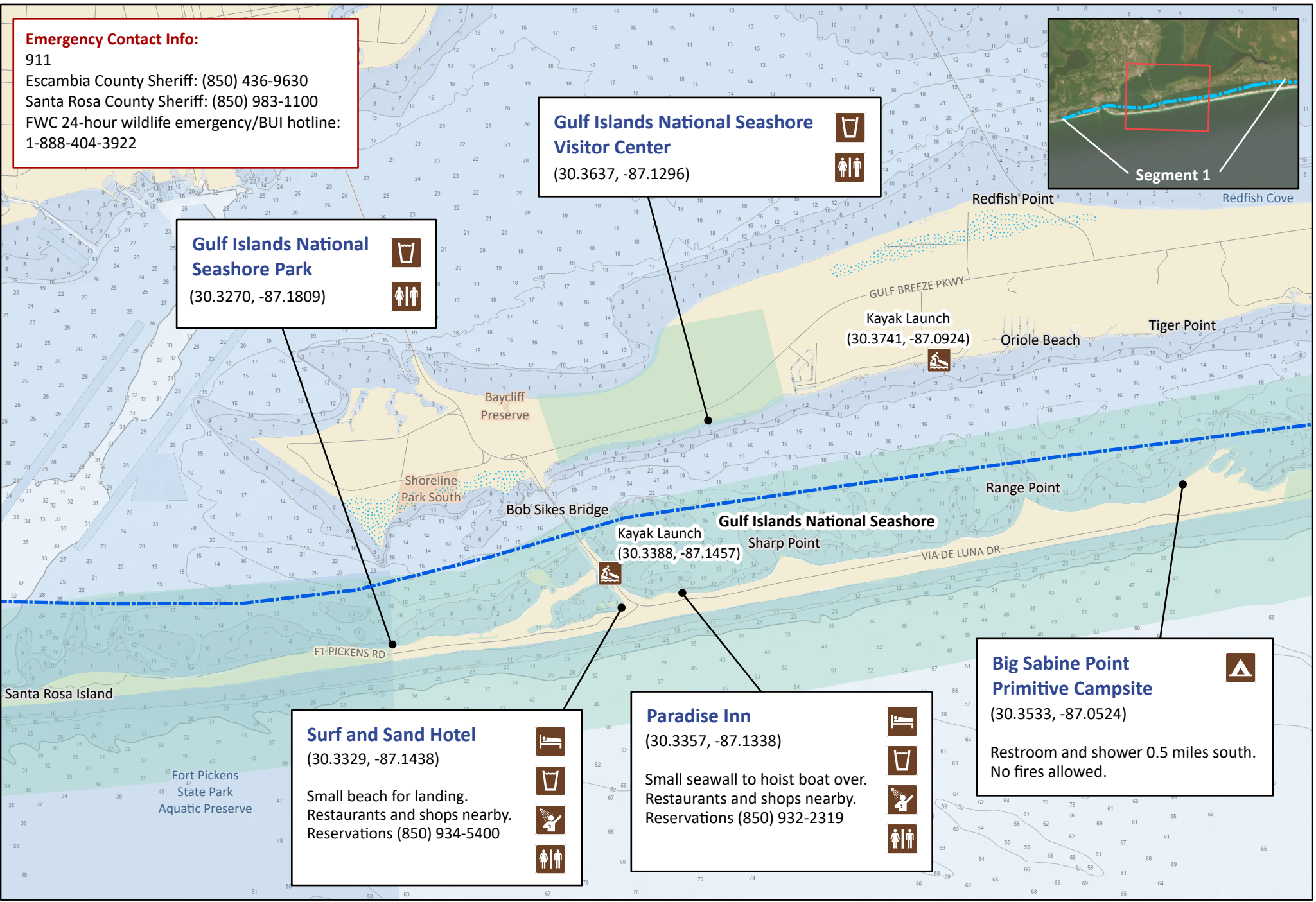
**Big Sabine Point
 Primitive Campsite**
 (30.3533, -87.0524)
 Restroom and shower 0.5 miles south.
 No fires allowed.



Surf and Sand Hotel
 (30.3329, -87.1438)
 Small beach for landing.
 Restaurants and shops nearby.
 Reservations (850) 934-5400



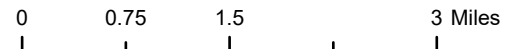
Paradise Inn
 (30.3357, -87.1338)
 Small seawall to hoist boat over.
 Restaurants and shops nearby.
 Reservations (850) 932-2319



Florida Circumnavigational Saltwater Paddling Trail

Segment 1: Pensacola/Fort Pickens (Map 2 of 3)

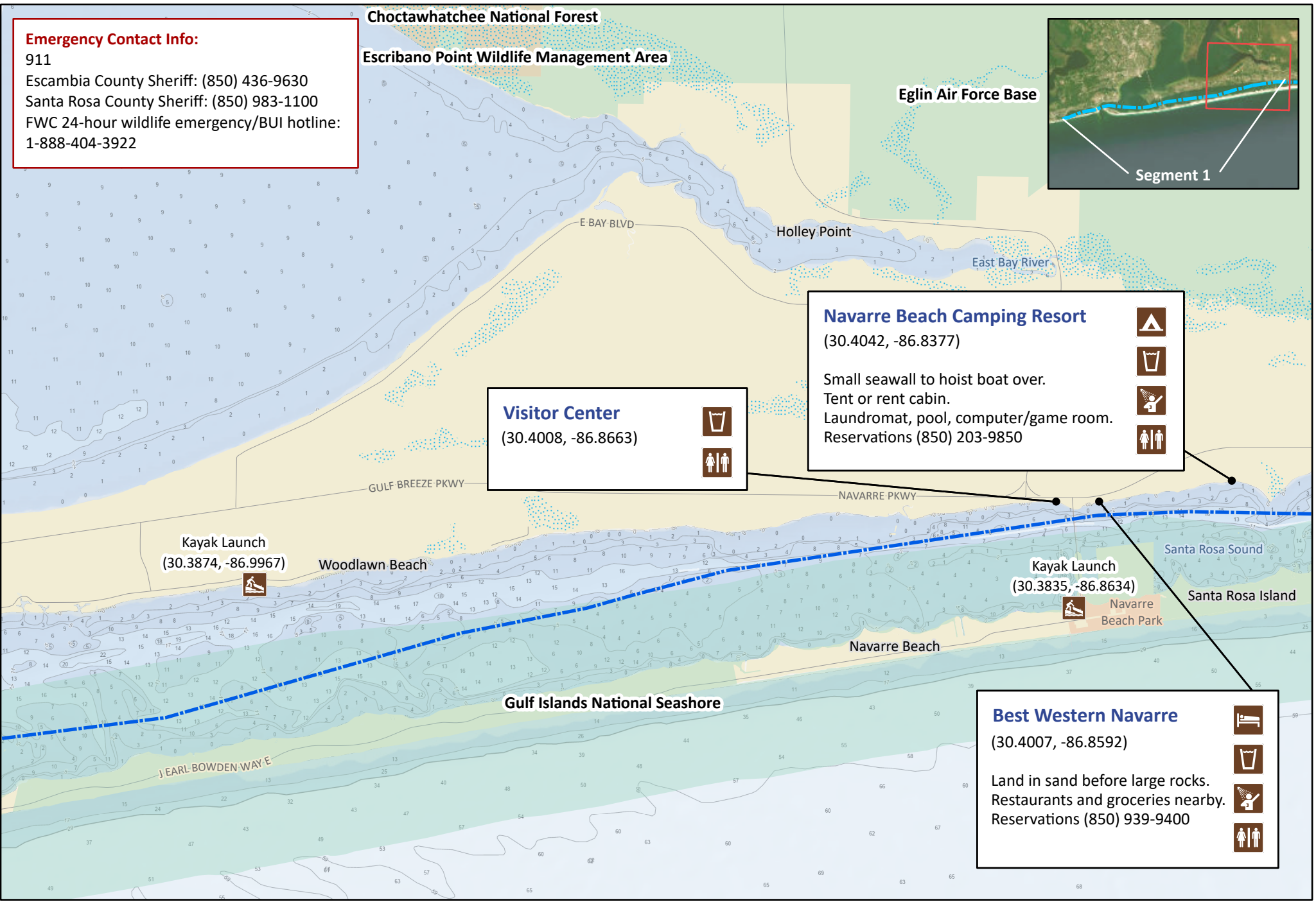
Begin: Big Lagoon State Park Distance: 37 miles
 End: Navarre Beach Camping Resort Duration: 3 days





Disclaimer: This guide is intended as an aid to navigation only. A Global Positioning System (GPS) unit is required and persons are encouraged to supplement these maps with NOAA charts or other maps.
 Updated: 11/2022



Emergency Contact Info:
 911
 Escambia County Sheriff: (850) 436-9630
 Santa Rosa County Sheriff: (850) 983-1100
 FWC 24-hour wildlife emergency/BUI hotline:
 1-888-404-3922



Visitor Center
 (30.4008, -86.8663)

Navarre Beach Camping Resort
 (30.4042, -86.8377)




Small seawall to hoist boat over.
 Tent or rent cabin.
 Laundromat, pool, computer/game room.
 Reservations (850) 203-9850

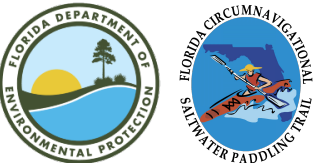





Best Western Navarre
 (30.4007, -86.8592)

Land in sand before large rocks.
 Restaurants and groceries nearby.
 Reservations (850) 939-9400

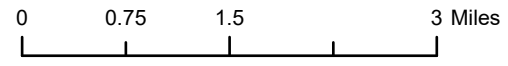




Florida Circumnavigational Saltwater Paddling Trail

Segment 1: Pensacola/Fort Pickens (Map 3 of 3)

Begin: Big Lagoon State Park Distance: 37 miles
 End: Navarre Beach Camping Resort Duration: 3 days



Disclaimer: This guide is intended as an aid to navigation only. A Global Positioning System (GPS) unit is required and persons are encouraged to supplement these maps with NOAA charts or other maps.
 Updated: 11/2022

