

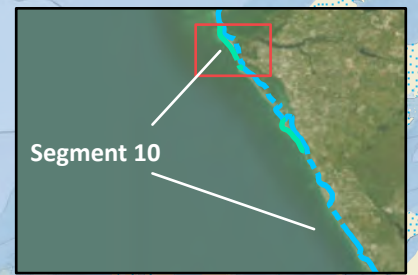
**Emergency Contact Info:**

911  
Sarasota County Sheriff: (941) 861-5800  
FWC 24-hour wildlife emergency/BUI hotline:  
1-888-404-3922

**Bayfront Park**

(27.5358, -82.7368)

Picnic tables, grills,  
and pavillions available.



Segment 10

**Holmes Beach Motels**

(27.5147, -82.7253)

Free trolley system on  
Anna Maria Island. Shops  
and restaurants nearby.



**Dream Inn**

(27.4812, -82.7049)



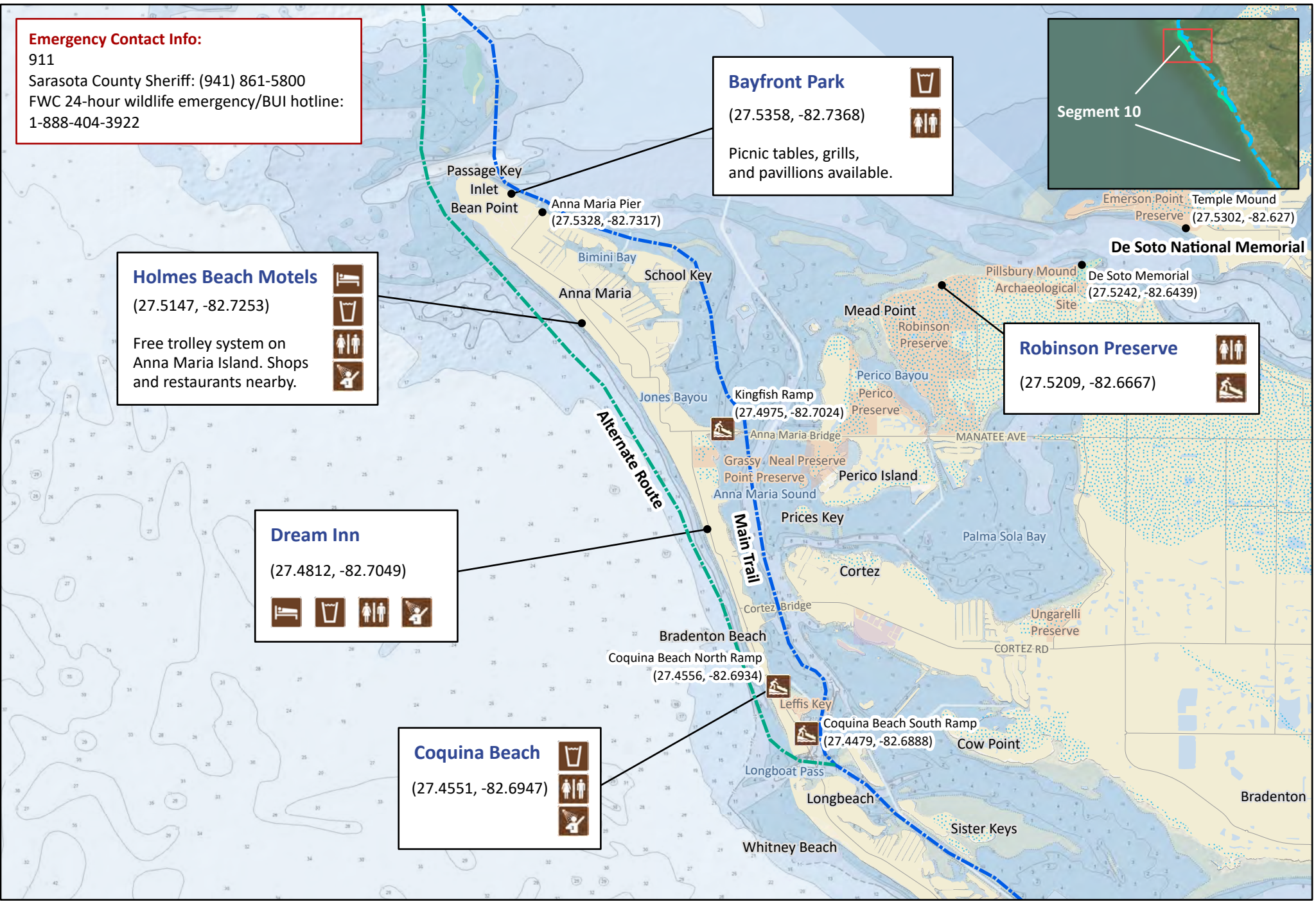
**Coquina Beach**

(27.4551, -82.6947)



**Robinson Preserve**

(27.5209, -82.6667)

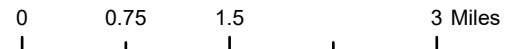


**Florida Circumnavigational Saltwater Paddling Trail**

**Segment 10: Sarasota/Venice (Map 1 of 5)**

Begin: Anna Maria Island/Bayfront Park  
End: Wanna B Inn

Distance: 51 miles  
Duration: 3 days

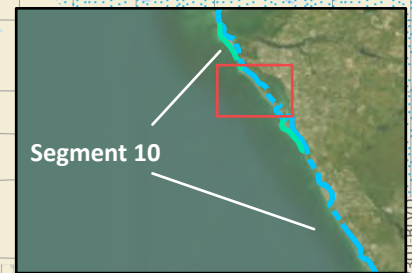


Disclaimer: This guide is intended as an aid to navigation only. A Global Positioning System (GPS) unit is required and persons are encouraged to supplement these maps with NOAA charts or other maps.  
Updated: 12/21/2023



**Emergency Contact Info:**

911  
Sarasota County Sheriff: (941) 861-5800  
FWC 24-hour wildlife emergency/BUI hotline:  
1-888-404-3922

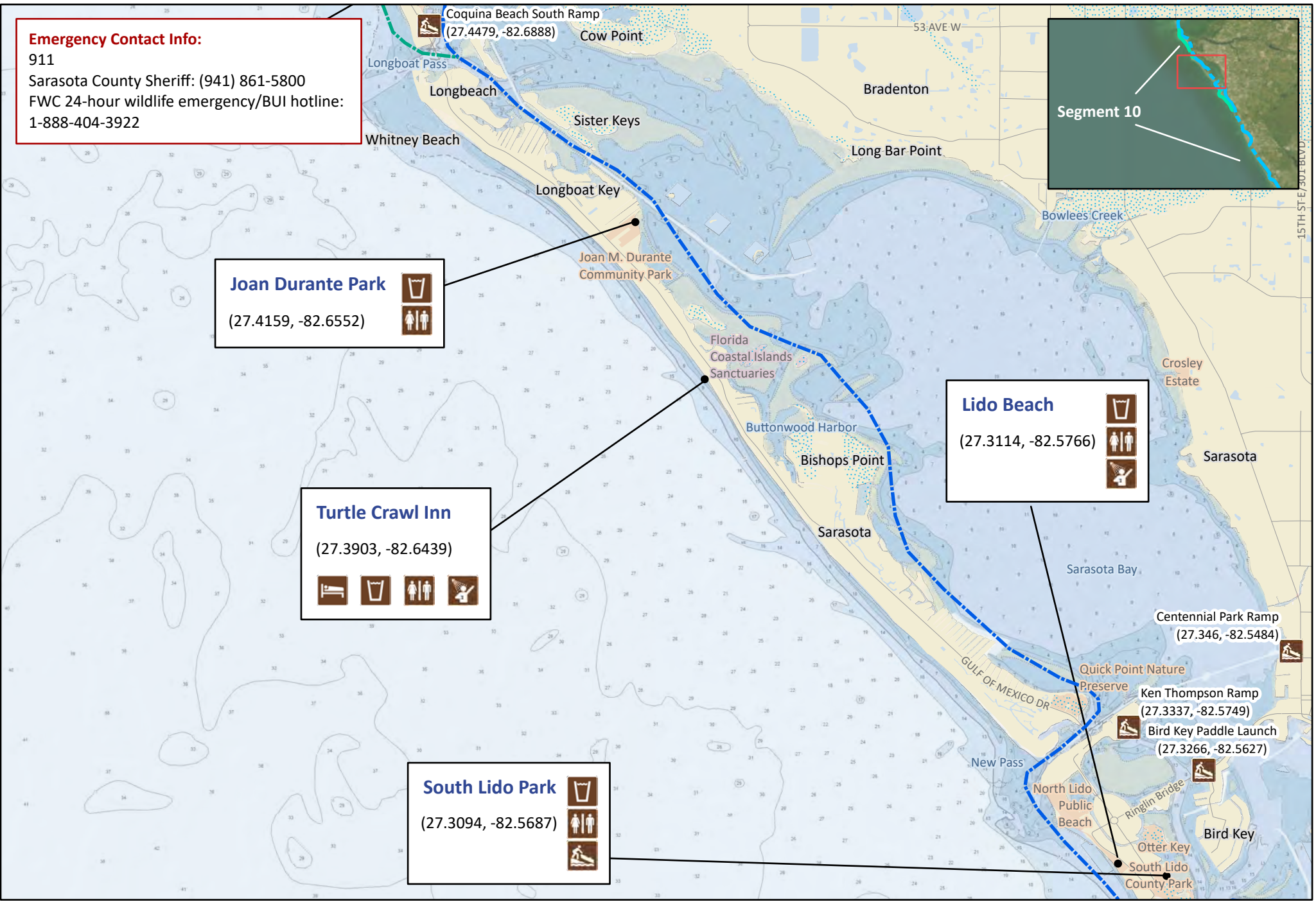


**Joan Durante Park**  
(27.4159, -82.6552)

**Turtle Crawl Inn**  
(27.3903, -82.6439)

**South Lido Park**  
(27.3094, -82.5687)

**Lido Beach**  
(27.3114, -82.5766)

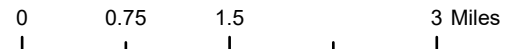


**Florida Circumnavigational Saltwater Paddling Trail**

**Segment 10: Sarasota/Venice (Map 2 of 5)**

Begin: Anna Maria Island/Bayfront Park  
End: Wanna B Inn

Distance: 51 miles  
Duration: 3 days



Disclaimer: This guide is intended as an aid to navigation only. A Global Positioning System (GPS) unit is required and persons are encouraged to supplement these maps with NOAA charts or other maps.  
Updated: 12/21/2023



**Emergency Contact Info:**

911  
Sarasota County Sheriff: (941) 861-5800  
FWC 24-hour wildlife emergency/BUI hotline:  
1-888-404-3922

**Sandcastle Resort**

(27.3037, -82.5718)



**Siesta Beach Park**

(27.2661, -82.5526)



**Turtle Beach Campground**

(27.2201, -82.5178)

Advanced reservations  
recommended: (941) 349-3839  
Restaurants nearby.



**Oscar Scherer  
Campground**

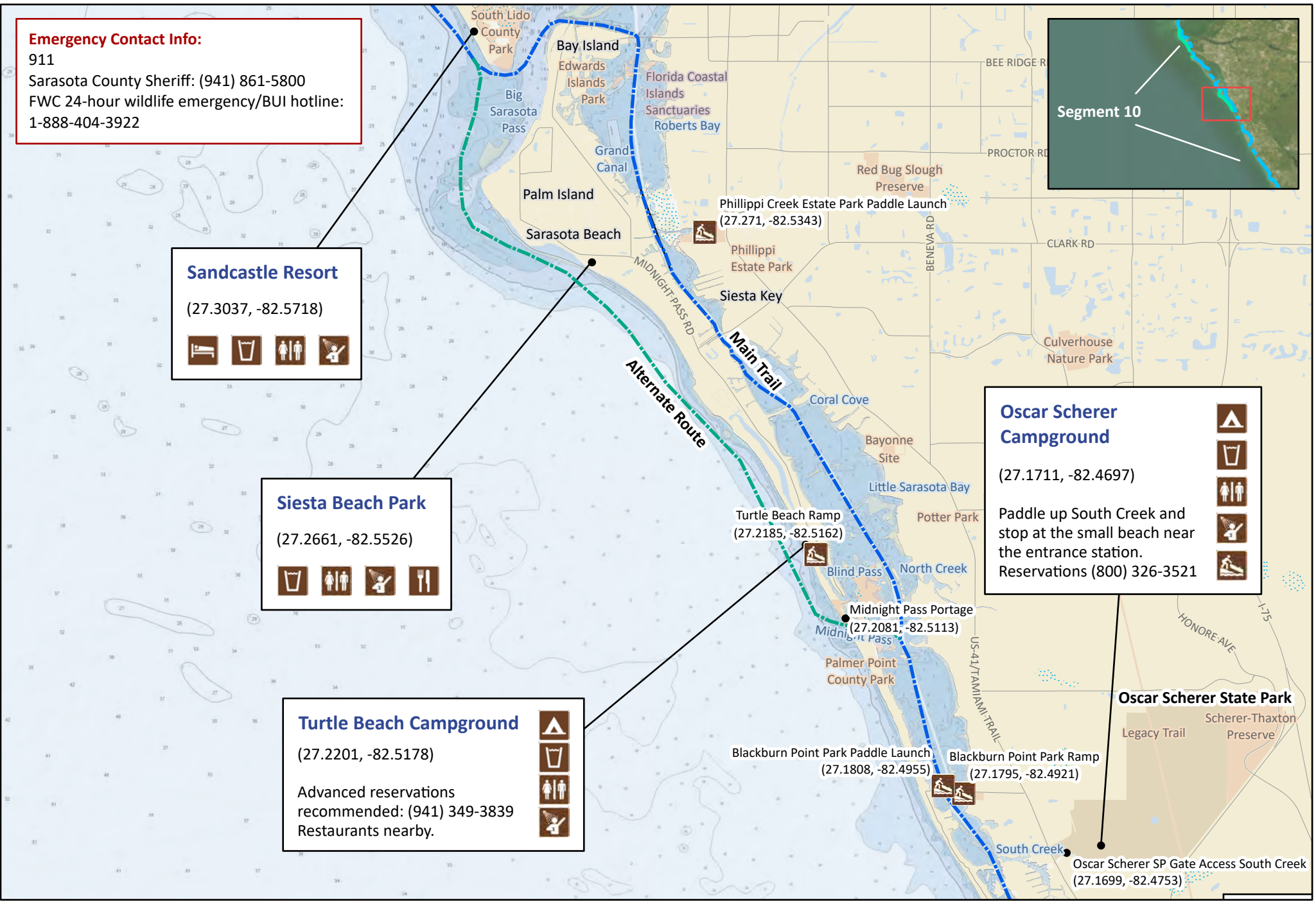
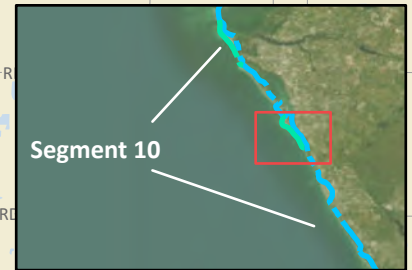
(27.1711, -82.4697)

Paddle up South Creek and  
stop at the small beach near  
the entrance station.  
Reservations (800) 326-3521



**Oscar Scherer State Park**

Oscar Scherer SP Gate Access South Creek  
(27.1699, -82.4753)

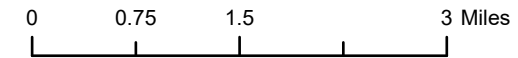


**Florida Circumnavigational Saltwater Paddling Trail**

**Segment 10: Sarasota/Venice (Map 3 of 5)**

Begin: Anna Maria Island/Bayfront Park  
End: Wanna B Inn

Distance: 51 miles  
Duration: 3 days

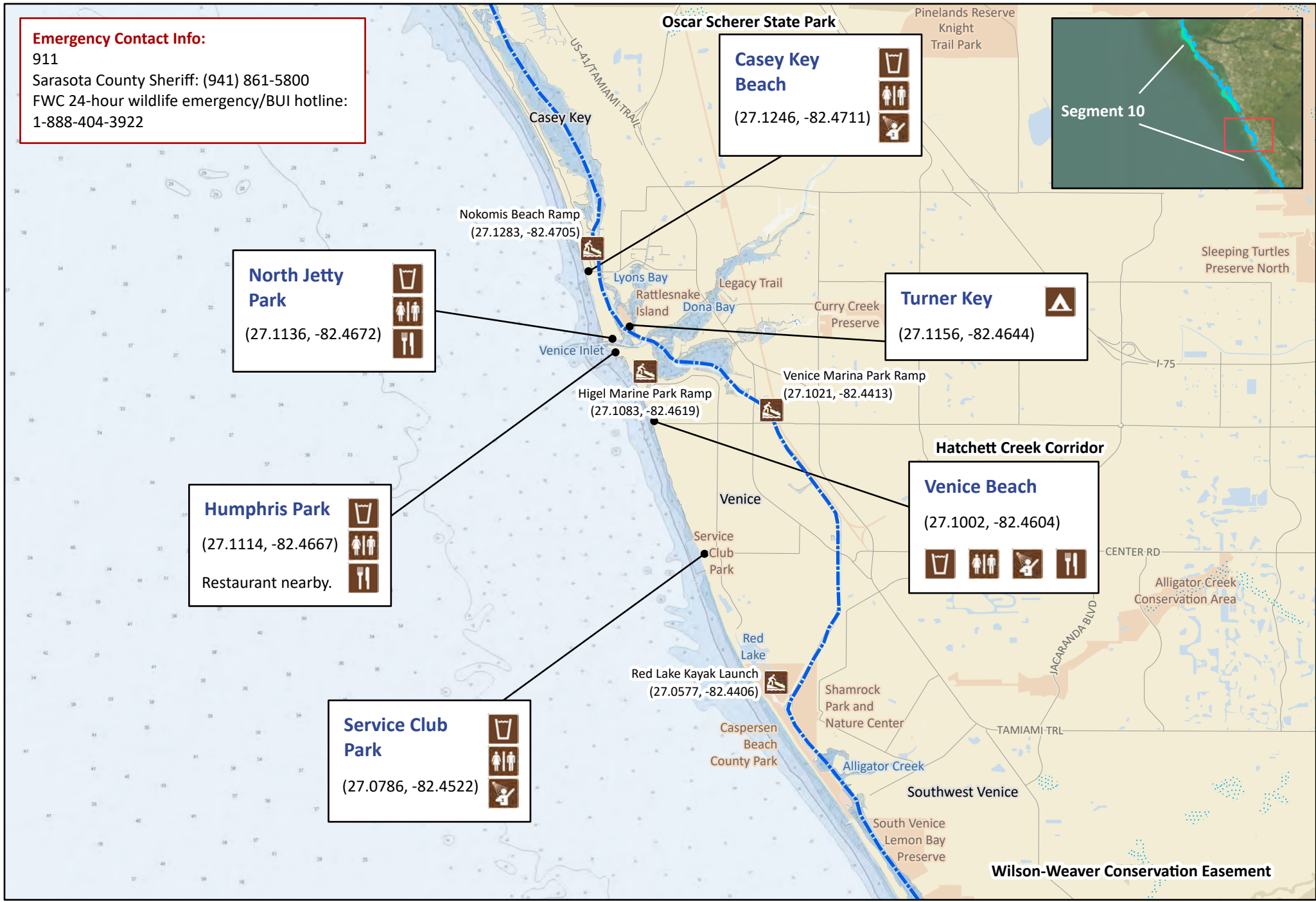


Disclaimer: This guide is intended as an aid to navigation only. A Global Positioning System (GPS) unit is required and persons are encouraged to supplement these maps with NOAA charts or other maps.  
Updated: 12/21/2023



**Emergency Contact Info:**

911  
Sarasota County Sheriff: (941) 861-5800  
FWC 24-hour wildlife emergency/BUI hotline:  
1-888-404-3922

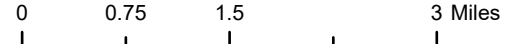


**Florida Circumnavigational Saltwater Paddling Trail**

**Segment 10: Sarasota/Venice (Map 4 of 5)**

Begin: Anna Maria Island/Bayfront Park  
End: Wanna B Inn

Distance: 51 miles  
Duration: 3 days



Disclaimer: This guide is intended as an aid to navigation only. A Global Positioning System (GPS) unit is required and persons are encouraged to supplement these maps with NOAA charts or other maps.  
Updated: 12/21/2023



**Emergency Contact Info:**

911  
Sarasota County Sheriff: (941) 861-5800  
FWC 24-hour wildlife emergency/BUI hotline:  
1-888-404-3922

**Manasota Beach**

(27.0104, -82.4126)



**Blind Pass Park**

(26.9631, -82.3851)



**Beach Croft Motel**

(26.9266, -82.3621)

Reservations:  
(941) 474-6509



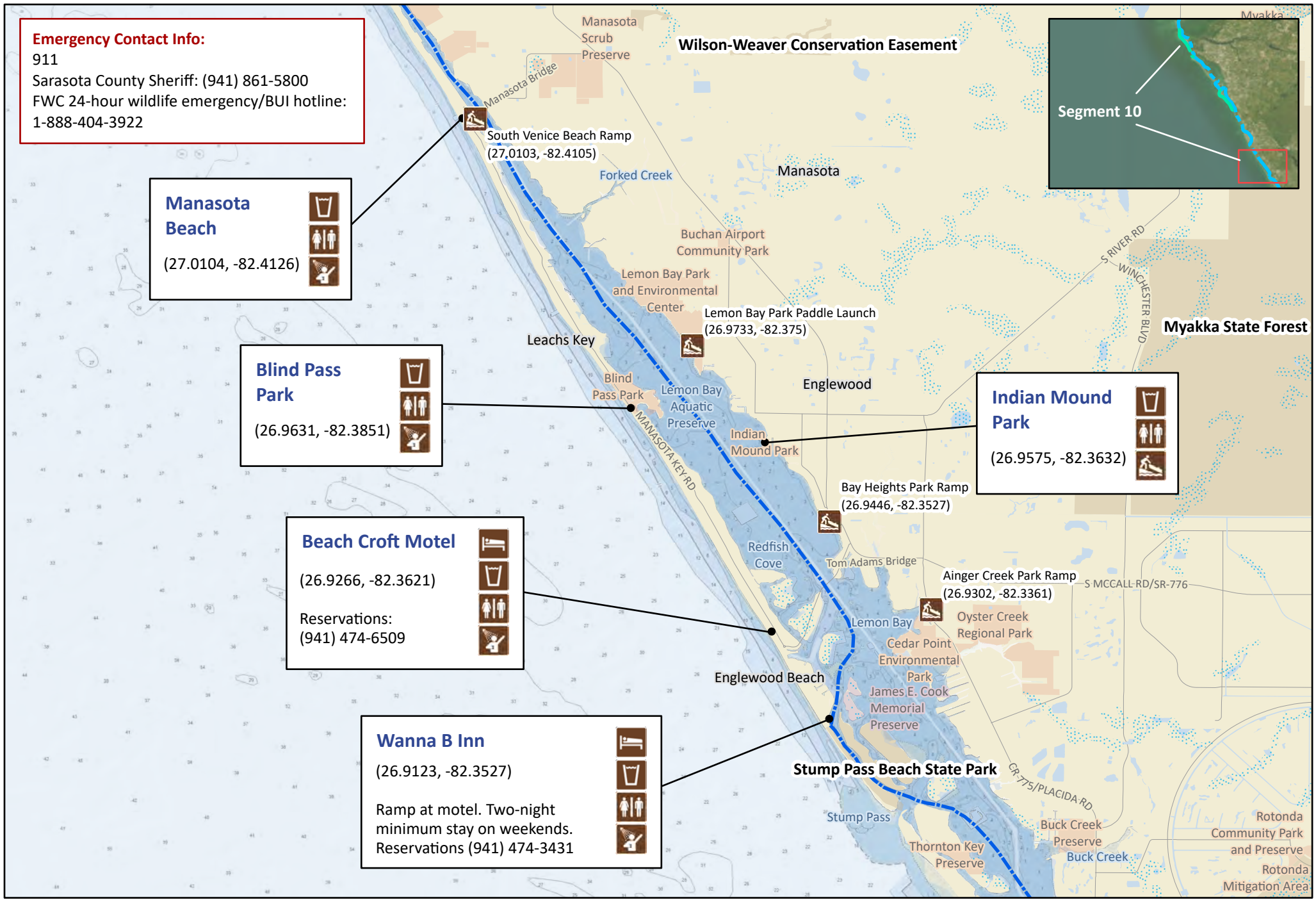
**Wanna B Inn**

(26.9123, -82.3527)

Ramp at motel. Two-night minimum stay on weekends.  
Reservations (941) 474-3431



**Segment 10**

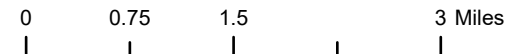


**Florida Circumnavigational Saltwater Paddling Trail**

**Segment 10: Sarasota/Venice (Map 5 of 5)**

Begin: Anna Maria Island/Bayfront Park  
End: Wanna B Inn

Distance: 51 miles  
Duration: 3 days



Disclaimer: This guide is intended as an aid to navigation only. A Global Positioning System (GPS) unit is required and persons are encouraged to supplement these maps with NOAA charts or other maps.  
Updated: 12/21/2023

