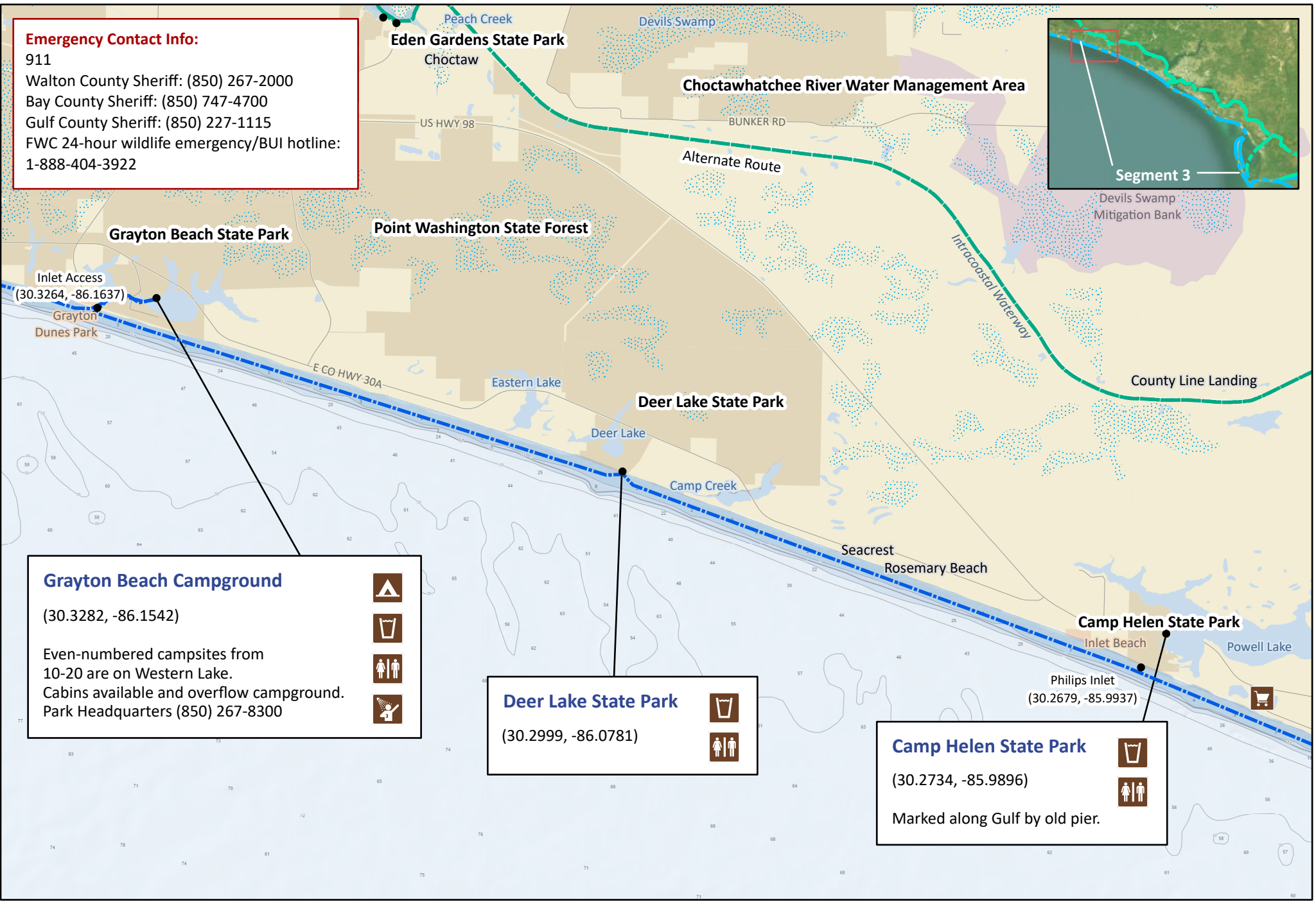
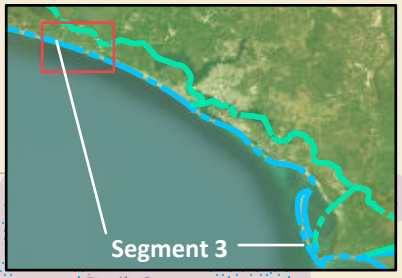


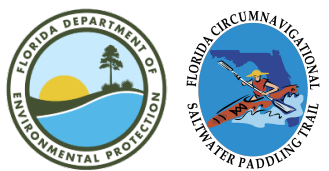
Emergency Contact Info:
 911
 Walton County Sheriff: (850) 267-2000
 Bay County Sheriff: (850) 747-4700
 Gulf County Sheriff: (850) 227-1115
 FWC 24-hour wildlife emergency/BUI hotline:
 1-888-404-3922



Grayton Beach Campground
 (30.3282, -86.1542)
 Even-numbered campsites from 10-20 are on Western Lake.
 Cabins available and overflow campground.
 Park Headquarters (850) 267-8300

Deer Lake State Park
 (30.2999, -86.0781)

Camp Helen State Park
 (30.2734, -85.9896)
 Marked along Gulf by old pier.

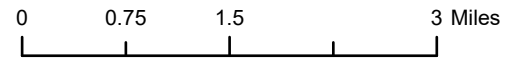


Florida Circumnavigational Saltwater Paddling Trail

Segment 3: Panama City Beach/St. Andrews Bay (Map 1 of 6)

Begin: Grayton Beach State Park
 End: St. Joseph's Bay State Buffer Preserve's Deal Tract

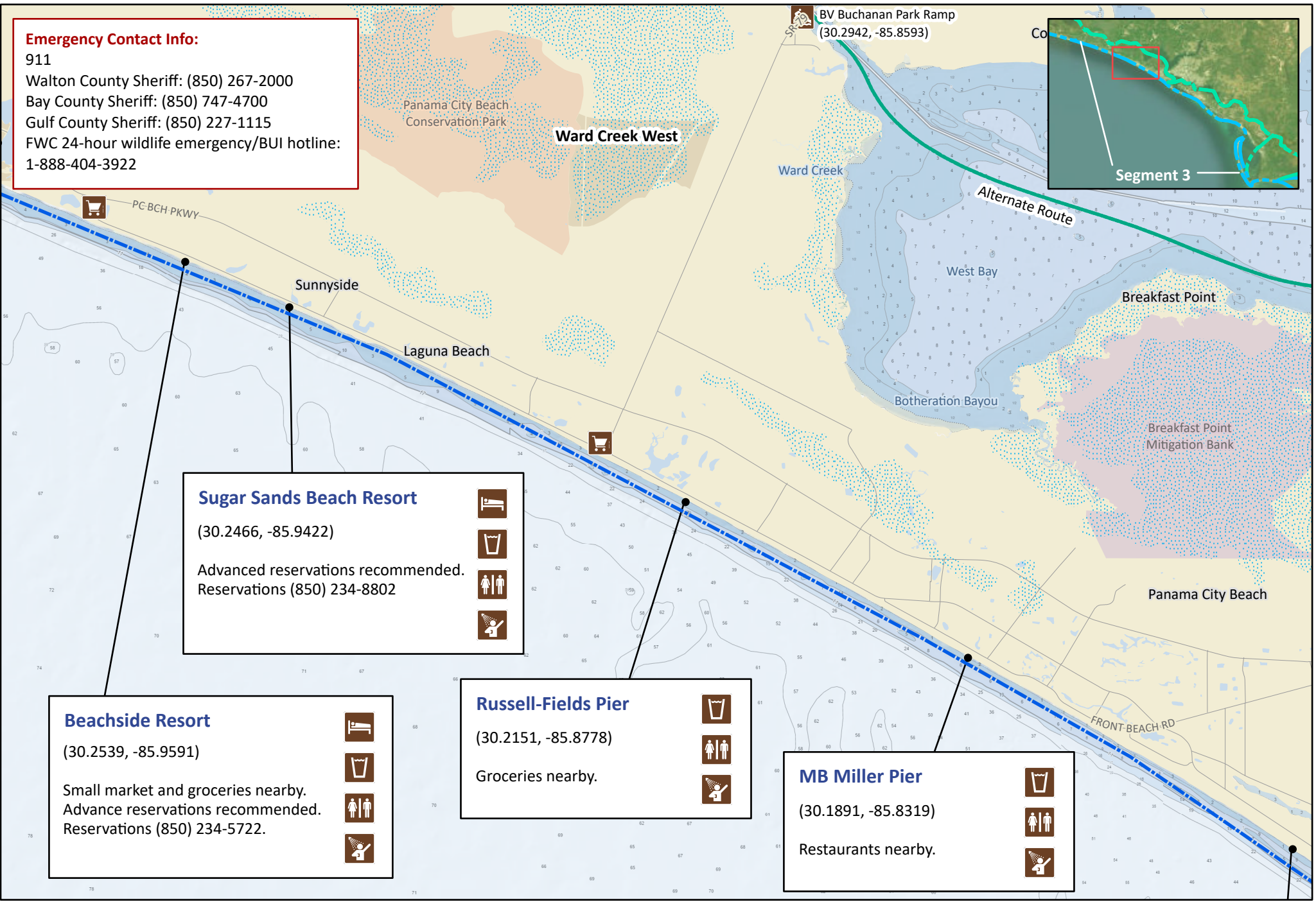
Distance: 63 miles, depending on side trips
 Duration: 4-5 days



Disclaimer: This guide is intended as an aid to navigation only. A Global Positioning System (GPS) unit is required and persons are encouraged to supplement these maps with NOAA charts or other maps.
 Updated: 9/28/2023



Emergency Contact Info:
 911
 Walton County Sheriff: (850) 267-2000
 Bay County Sheriff: (850) 747-4700
 Gulf County Sheriff: (850) 227-1115
 FWC 24-hour wildlife emergency/BUI hotline:
 1-888-404-3922

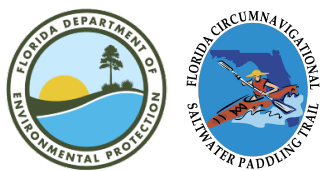


Sugar Sands Beach Resort
 (30.2466, -85.9422)
 Advanced reservations recommended.
 Reservations (850) 234-8802

Beachside Resort
 (30.2539, -85.9591)
 Small market and groceries nearby.
 Advance reservations recommended.
 Reservations (850) 234-5722.

Russell-Fields Pier
 (30.2151, -85.8778)
 Groceries nearby.

MB Miller Pier
 (30.1891, -85.8319)
 Restaurants nearby.

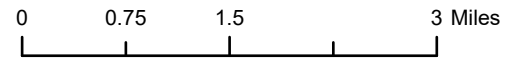


Florida Circumnavigational Saltwater Paddling Trail

Segment 3: Panama City Beach/St. Andrews Bay (Map 2 of 6)

Begin: Grayton Beach State Park
 End: St. Joseph's Bay State Buffer Preserve's Deal Tract

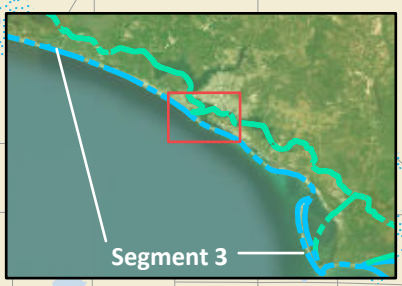
Distance: 63 miles, depending on side trips
 Duration: 4-5 days



Disclaimer: This guide is intended as an aid to navigation only. A Global Positioning System (GPS) unit is required and persons are encouraged to supplement these maps with NOAA charts or other maps.
 Updated: 9/28/2023



Emergency Contact Info:
 911
 Walton County Sheriff: (850) 267-2000
 Bay County Sheriff: (850) 747-4700
 Gulf County Sheriff: (850) 227-1115
 FWC 24-hour wildlife emergency/BUI hotline:
 1-888-404-3922



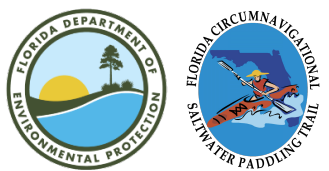
Richard Seltzer Park
 (30.1587, -85.7790)

-
-
-

St. Andrews State Park
 (30.1335, -85.7317)

Just past the boat ramp.
 Campsites on water (even numbers from 16-38, 96-114 and 101, 132, 134, and 143).

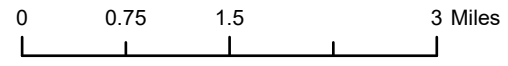
-
-
-
-



Florida Circumnavigational Saltwater Paddling Trail
Segment 3: Panama City Beach/St. Andrews Bay (Map 3 of 6)

Begin: Grayton Beach State Park
 End: St. Joseph's Bay State Buffer Preserve's Deal Tract

Distance: 63 miles, depending on side trips
 Duration: 4-5 days

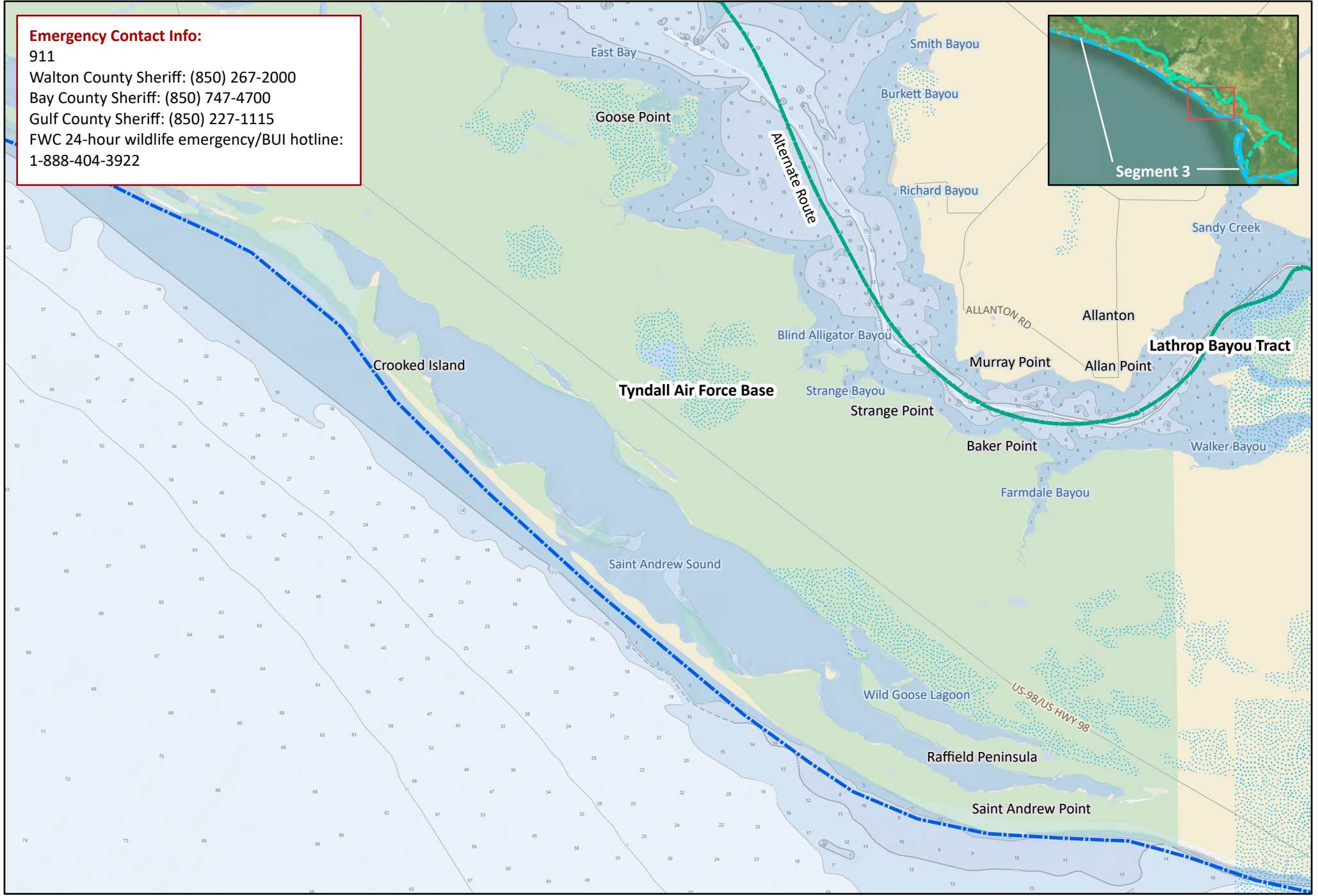
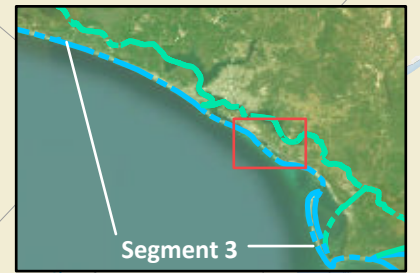


Disclaimer: This guide is intended as an aid to navigation only. A Global Positioning System (GPS) unit is required and persons are encouraged to supplement these maps with NOAA charts or other maps.
 Updated: 9/28/2023



Emergency Contact Info:

911
Walton County Sheriff: (850) 267-2000
Bay County Sheriff: (850) 747-4700
Gulf County Sheriff: (850) 227-1115
FWC 24-hour wildlife emergency/BUI hotline:
1-888-404-3922

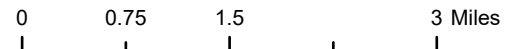


Florida Circumnavigational Saltwater Paddling Trail

Segment 3: Panama City Beach/St. Andrews Bay (Map 4 of 6)

Begin: Grayton Beach State Park
End: St. Joseph's Bay State Buffer Preserve's Deal Tract

Distance: 63 miles, depending on side trips
Duration: 4-5 days



Disclaimer: This guide is intended as an aid to navigation only. A Global Positioning System (GPS) unit is required and persons are encouraged to supplement these maps with NOAA charts or other maps.
Updated: 9/28/2023



Emergency Contact Info:
 911
 Walton County Sheriff: (850) 267-2000
 Bay County Sheriff: (850) 747-4700
 Gulf County Sheriff: (850) 227-1115
 FWC 24-hour wildlife emergency/BUI hotline:
 1-888-404-3922

El Governor Hotel
 (29.9423, -85.4106)
 Reservations:
 (850) 648-5757



Campsite #11
 (29.8324, -85.4113)



Campsite #10
 (29.8322, -85.4147)



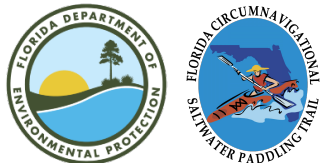
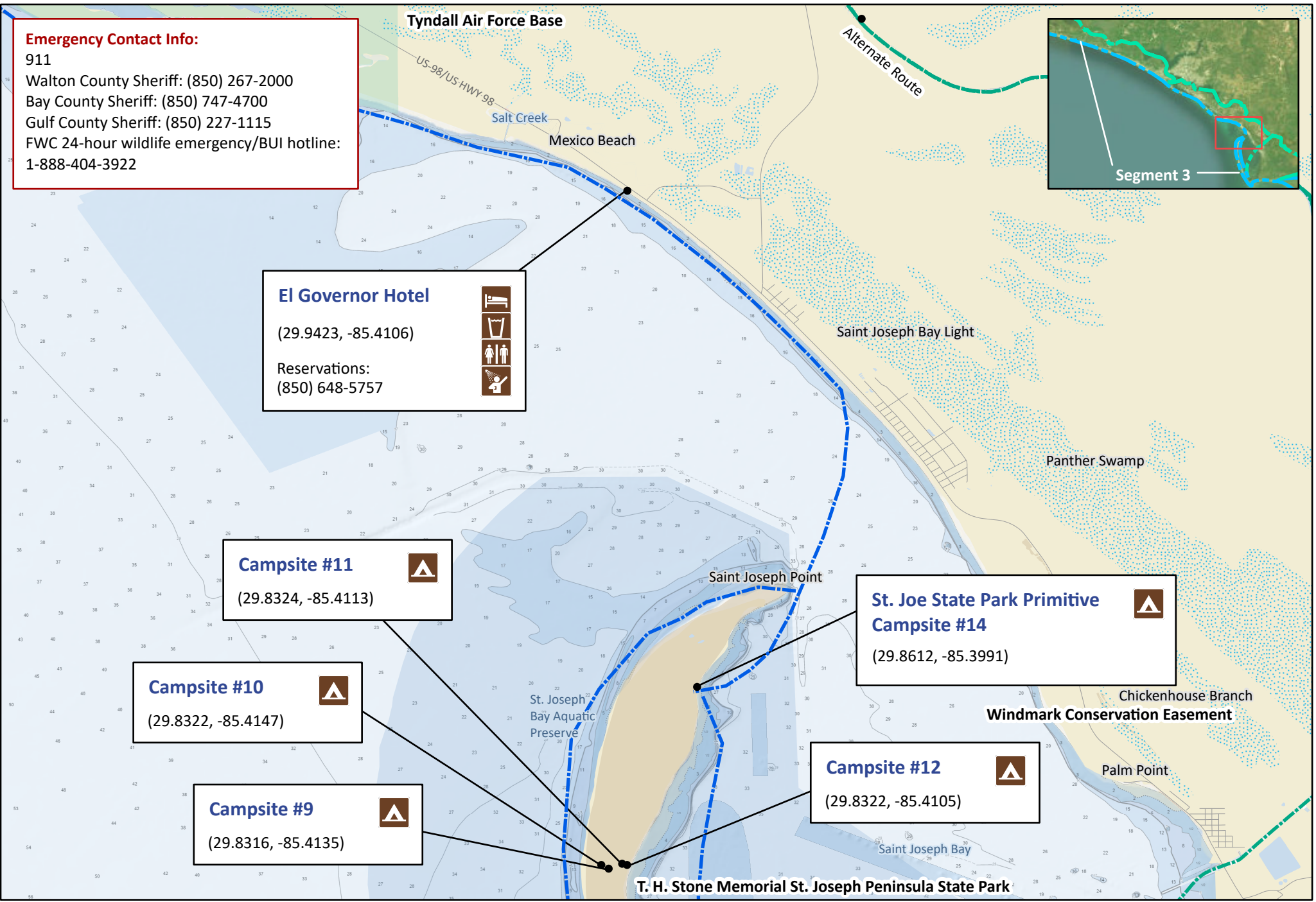
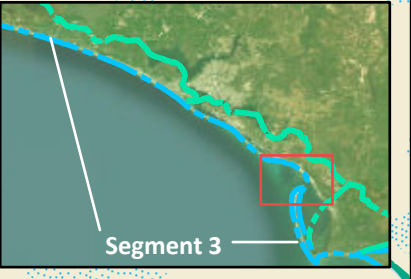
Campsite #9
 (29.8316, -85.4135)



**St. Joe State Park Primitive
 Campsite #14**
 (29.8612, -85.3991)



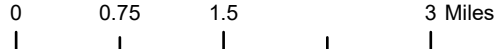
Campsite #12
 (29.8322, -85.4105)


Florida Circumnavigational Saltwater Paddling Trail
Segment 3: Panama City Beach/St. Andrews Bay (Map 5 of 6)

Begin: Grayton Beach State Park
 End: St. Joseph's Bay State Buffer Preserve's Deal Tract

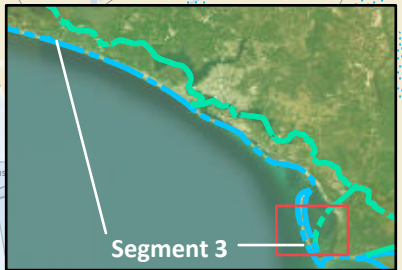
Distance: 63 miles, depending on side trips
 Duration: 4-5 days



Disclaimer: This guide is intended as an aid to navigation only. A Global Positioning System (GPS) unit is required and persons are encouraged to supplement these maps with NOAA charts or other maps.
 Updated: 9/28/2023



Emergency Contact Info:
 911
 Walton County Sheriff: (850) 267-2000
 Bay County Sheriff: (850) 747-4700
 Gulf County Sheriff: (850) 227-1115
 FWC 24-hour wildlife emergency/BUI hotline:
 1-888-404-3922



Campsite #6
 (29.8068, -85.4126)

Campsite #5
 (29.8062, -85.4107)

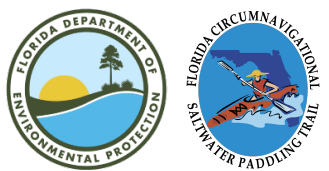
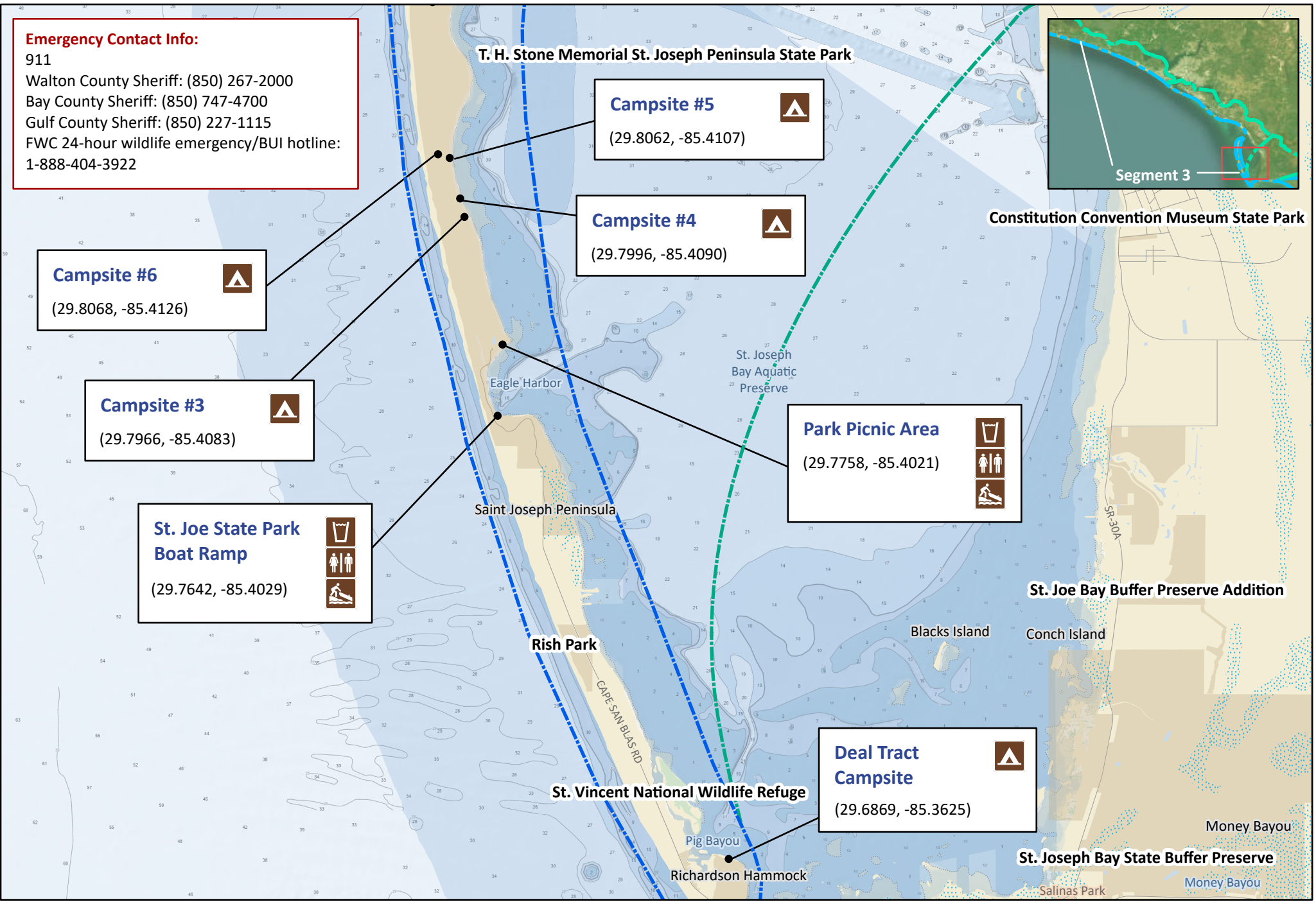
Campsite #4
 (29.7996, -85.4090)

Campsite #3
 (29.7966, -85.4083)

St. Joe State Park Boat Ramp
 (29.7642, -85.4029)

Park Picnic Area
 (29.7758, -85.4021)

Deal Tract Campsite
 (29.6869, -85.3625)

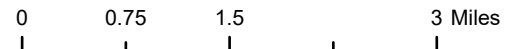


Florida Circumnavigational Saltwater Paddling Trail

Segment 3: Panama City Beach/St. Andrews Bay (Map 6 of 6)

Begin: Grayton Beach State Park
 End: St. Joseph's Bay State Buffer Preserve's Deal Tract

Distance: 63 miles, depending on side trips
 Duration: 4-5 days



Disclaimer: This guide is intended as an aid to navigation only. A Global Positioning System (GPS) unit is required and persons are encouraged to supplement these maps with NOAA charts or other maps.
 Updated: 9/28/2023

