

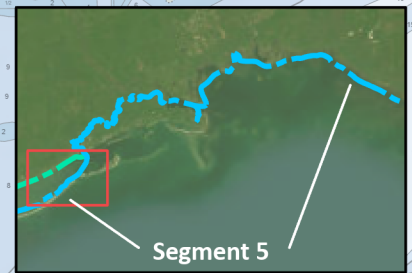
Emergency Contact Info:

911
Franklin County Sheriff: (850) 670-8500
Wakulla County Sheriff: (850) 745-7100
FWC 24-hour wildlife emergency/BUI hotline:
1-888-404-3922

Carrabelle Beach Park

(29.8293, -84.6923)

Picnic shelters available.



Segment 5

Tate's Hell State Forest

Alternate Route

Apalachicola National Estuarine Research Reserve

Gap Point Campsite 2

(29.7088, -84.7737)

Park Office (850) 927-2111



Dr. Julian G. Bruce St. George Island State Park

Sugar Hill Campsite

(29.7267, -84.7388)

Outdoor showers, water, and restrooms available 200 yards southeast of campsite. Camp in designated area. Avoid walking on dunes. Park Office (850) 927-2111



Gap Point Campsite 1

(29.7029, -84.7781)

Restrooms and showers available at family campground - end of the 2.5 mile trail from Gap Point. Park Office (850) 927-2111

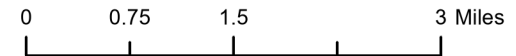


Florida Circumnavigational Saltwater Paddling Trail

Segment 5: Crooked River/St. Marks Refuge (Map 1 of 6)

Begin: Gap Point Campsite/St. George Island State Park
End: Econfina River State Park

Distance: 94 miles
Duration: 8-9 days



Disclaimer: This guide is intended as an aid to navigation only. A Global Positioning System (GPS) unit is required and persons are encouraged to supplement these maps with NOAA charts or other maps.
Updated: 12/13/2023



Emergency Contact Info:

911
Franklin County Sheriff: (850) 670-8500
Wakulla County Sheriff: (850) 745-7100
FWC 24-hour wildlife emergency/BUI hotline:
1-888-404-3922

Tate's Hell State Forest

Warren Bluff Hunt Campsite (PC#48)

(29.8735, -84.6965)

Hunting campsite.
Reservations (877) 879-3859

Oxbow Campsite (PC#47)

(29.8705, -84.6827)

Reservations
(877) 879-3859

Sunday Rollaway Hunt Campsite (PC#46)

(29.9029, -84.6517)

Hunting campsite.
Reservations (877) 879-3859

Rock Landing Campsite (PC#41-43)

(29.9793, -84.5683)

Reservations
(877) 879-3859

Moorings of Carrabelle

(29.8521, -84.6752)



Lanark Launch Site
(29.8809, -84.5953)

Crooked River PC#45

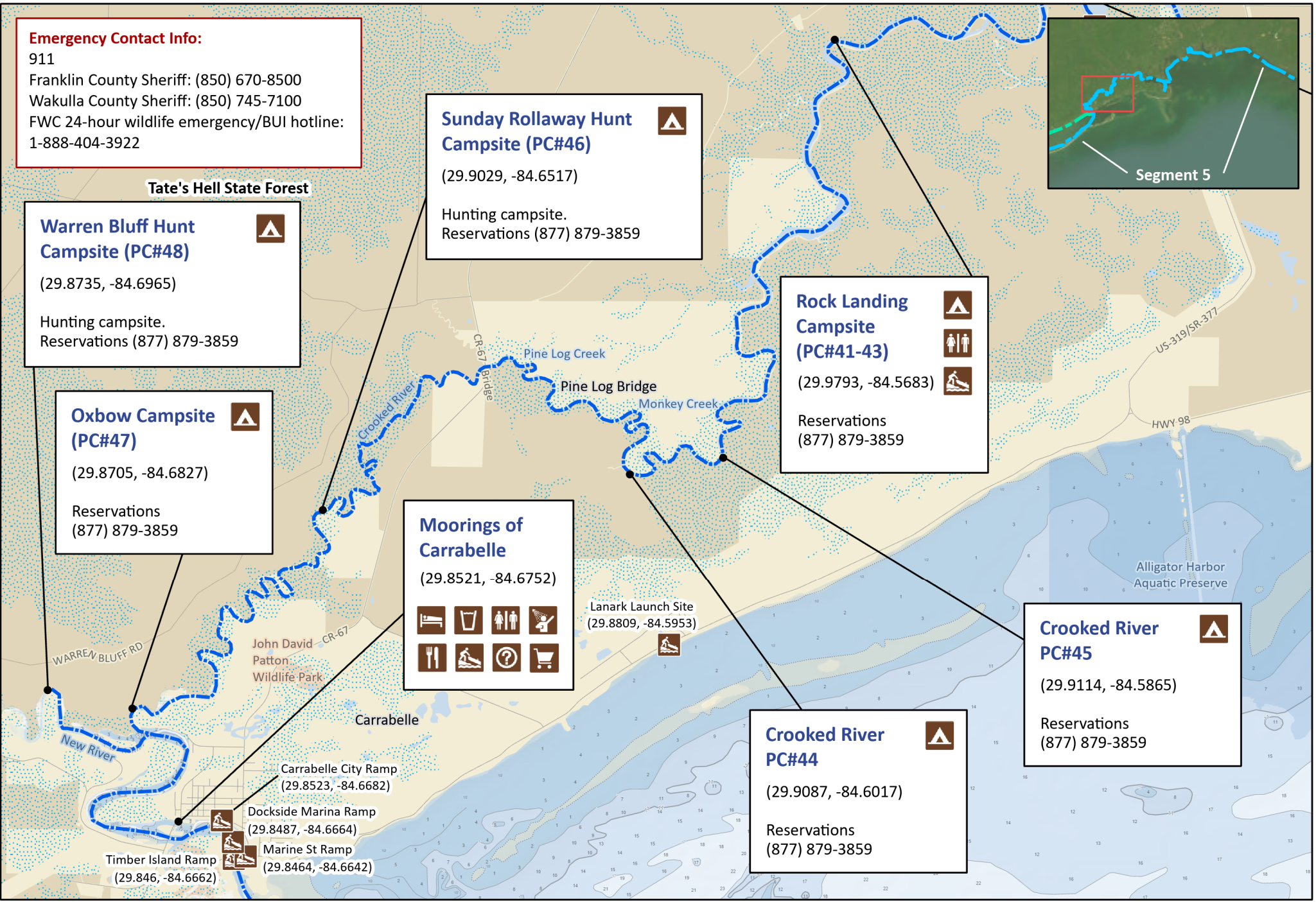
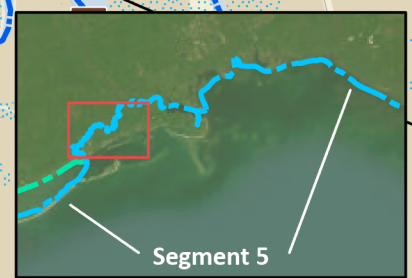
(29.9114, -84.5865)

Reservations
(877) 879-3859

Crooked River PC#44

(29.9087, -84.6017)

Reservations
(877) 879-3859

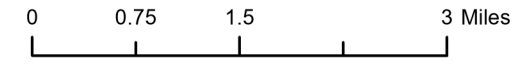


Florida Circumnavigational Saltwater Paddling Trail

Segment 5: Crooked River/St. Marks Refuge (Map 2 of 6)

Begin: Gap Point Campsite/St. George Island State Park
End: Econfina River State Park

Distance: 94 miles
Duration: 8-9 days



Disclaimer: This guide is intended as an aid to navigation only. A Global Positioning System (GPS) unit is required and persons are encouraged to supplement these maps with NOAA charts or other maps.
Updated: 12/13/2023



Emergency Contact Info:

911
Franklin County Sheriff: (850) 670-8500
Wakulla County Sheriff: (850) 745-7100
FWC 24-hour wildlife emergency/BUI hotline:
1-888-404-3922

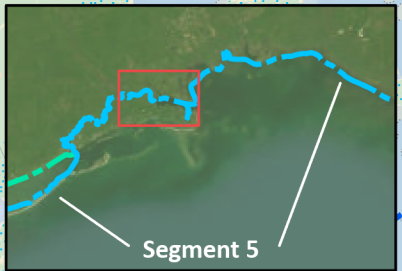
Womack Creek Campsite

(30.0023, -84.5403)
13 sites - good for large groups.
Hot showers.
Reservations (877) 879-3859



Levy Ditch Research Natural Area

Wakulla County Visitor Center (30.0346, -84.3889)
Harvey/Mowrey Parcel
Woolley Park
Gulf Specimen Marine Lab and Aquarium (30.0238, -84.3862)



Park Youth Camp

(30.0084, -84.4745)
Adult groups of six or more.
First-come, first-serve.
Reservations (850) 962-2771



Ochlockonee River State Park

Park Ramp (29.9993, -84.4806)

Cow Creek Ramp (29.9859, -84.4882)

McIntyre Rd Ramp (29.9816, -84.526)

St. Marks National Wildlife Refuge

Ochlockonee Bay Bridge Ramp (29.9612, -84.3849)

Bald Point Kayak Launch (29.9477, -84.3416)

Tate's Hell State Forest

Loop Road Campsite (PC#28)

(29.9899, -84.5355)
Hunting campsite.
Reservations (877) 879-3859



Holiday Campground

(29.9779, -84.3847)
Bathhouse, laundromat, pool, and recreation room.
Restaurants and stores nearby.
Reservations (850) 984-5757



Chaires Creek Campsite

(29.9410, -84.3544)
Headquarters
(850) 349-9146 or
(850) 962-2771



Park Kayak Launch (29.9248, -84.3625)

Kayak Launch (29.9121, -84.3676)

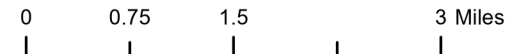


Florida Circumnavigational Saltwater Paddling Trail

Segment 5: Crooked River/St. Marks Refuge (Map 3 of 6)

Begin: Gap Point Campsite/St. George Island State Park
End: Econfina River State Park

Distance: 94 miles
Duration: 8-9 days



Disclaimer: This guide is intended as an aid to navigation only. A Global Positioning System (GPS) unit is required and persons are encouraged to supplement these maps with NOAA charts or other maps.
Updated: 12/13/2023



Emergency Contact Info:

911
Franklin County Sheriff: (850) 670-8500
Wakulla County Sheriff: (850) 745-7100
FWC 24-hour wildlife emergency/BUI hotline:
1-888-404-3922

Byrd Hammock Research Natural Area

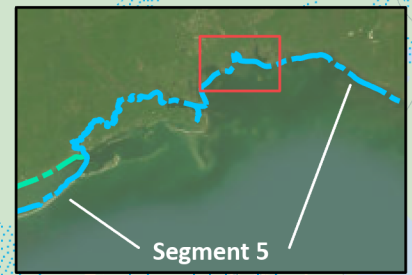
St. Marks National Wildlife Refuge

Coggins Branch Research Natural Area

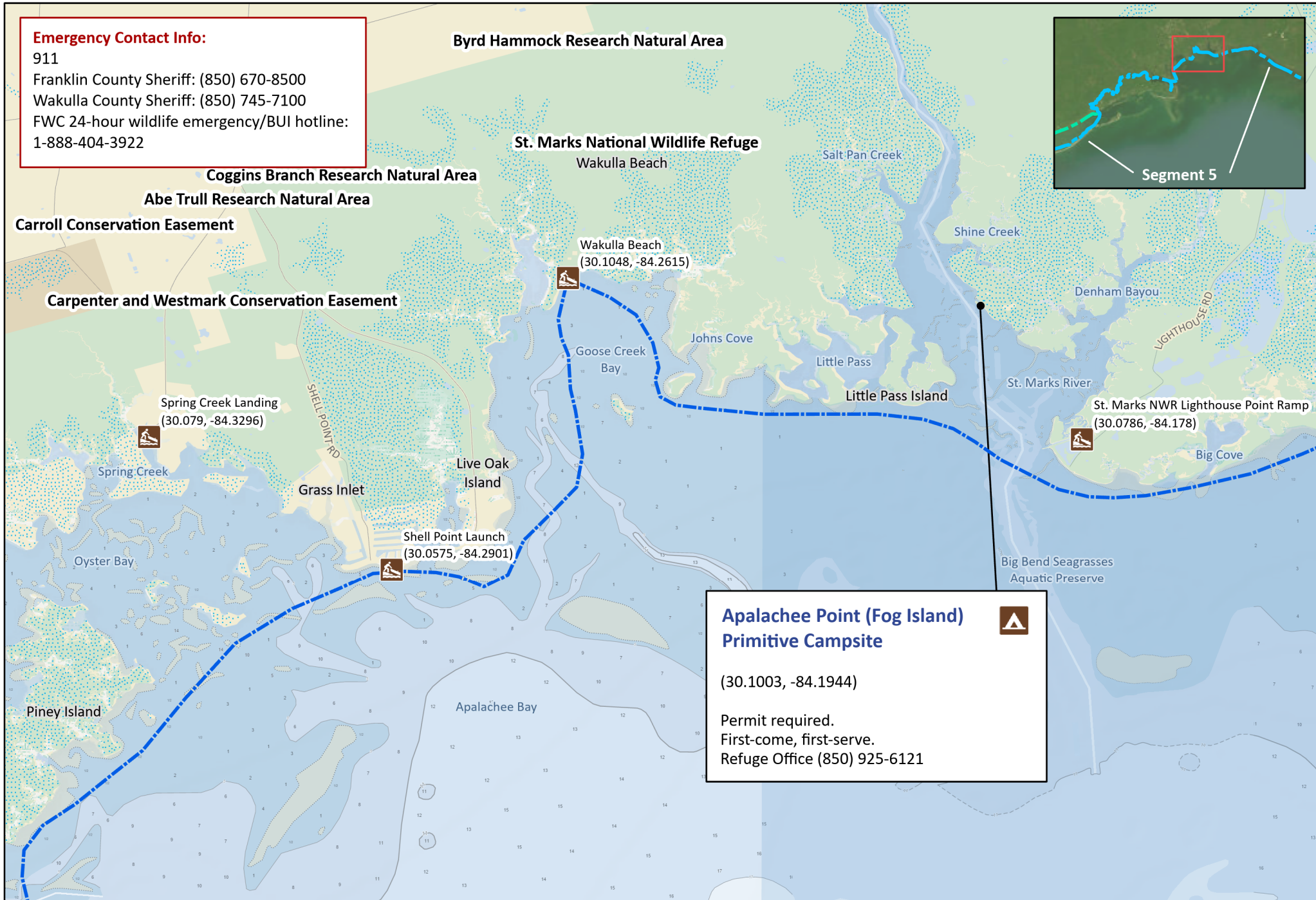
Abe Trull Research Natural Area

Carroll Conservation Easement

Carpenter and Westmark Conservation Easement



Segment 5



Apalachee Point (Fog Island) Primitive Campsite 

(30.1003, -84.1944)

Permit required.
First-come, first-serve.
Refuge Office (850) 925-6121

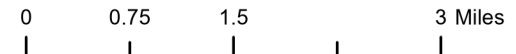


Florida Circumnavigational Saltwater Paddling Trail

Segment 5: Crooked River/St. Marks Refuge (Map 4 of 6)

Begin: Gap Point Campsite/St. George Island State Park
End: Econfina River State Park

Distance: 94 miles
Duration: 8-9 days

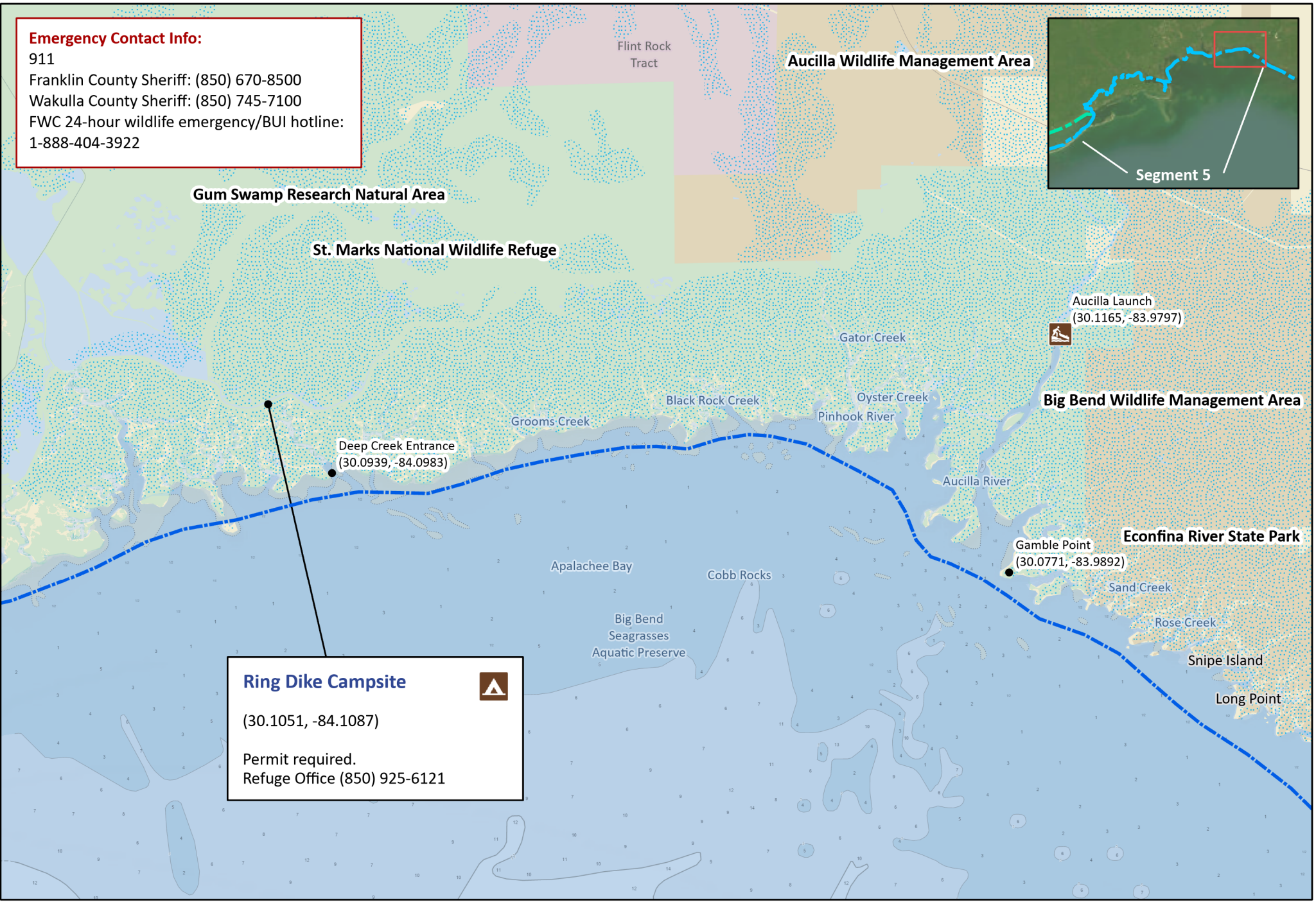
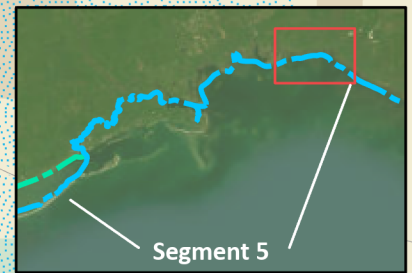


Disclaimer: This guide is intended as an aid to navigation only. A Global Positioning System (GPS) unit is required and persons are encouraged to supplement these maps with NOAA charts or other maps.
Updated: 12/13/2023



Emergency Contact Info:

911
Franklin County Sheriff: (850) 670-8500
Wakulla County Sheriff: (850) 745-7100
FWC 24-hour wildlife emergency/BUI hotline:
1-888-404-3922



Ring Dike Campsite 
(30.1051, -84.1087)
Permit required.
Refuge Office (850) 925-6121

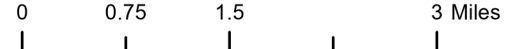


Florida Circumnavigational Saltwater Paddling Trail

Segment 5: Crooked River/St. Marks Refuge (Map 5 of 6)

Begin: Gap Point Campsite/St. George Island State Park
End: Econfinia River State Park

Distance: 94 miles
Duration: 8-9 days

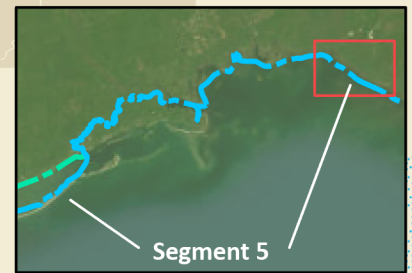


Disclaimer: This guide is intended as an aid to navigation only. A Global Positioning System (GPS) unit is required and persons are encouraged to supplement these maps with NOAA charts or other maps.
Updated: 12/13/2023



Emergency Contact Info:

911
Franklin County Sheriff: (850) 670-8500
Wakulla County Sheriff: (850) 745-7100
FWC 24-hour wildlife emergency/BUI hotline:
1-888-404-3922



Econfina Launch
(30.0586, -83.9066)
Park (850) 922-6077

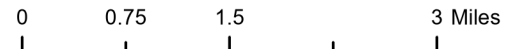
-
-
-
-



Florida Circumnavigational Saltwater Paddling Trail

Segment 5: Crooked River/St. Marks Refuge (Map 6 of 6)

Begin: Gap Point Campsite/St. George Island State Park
End: Econfina River State Park
Distance: 94 miles
Duration: 8-9 days



Disclaimer: This guide is intended as an aid to navigation only. A Global Positioning System (GPS) unit is required and persons are encouraged to supplement these maps with NOAA charts or other maps.
Updated: 12/13/2023

