

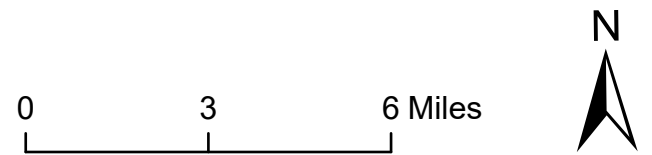
- Proposals
- Trailheads
- Florida National Scenic Trail
- Florida State Parks

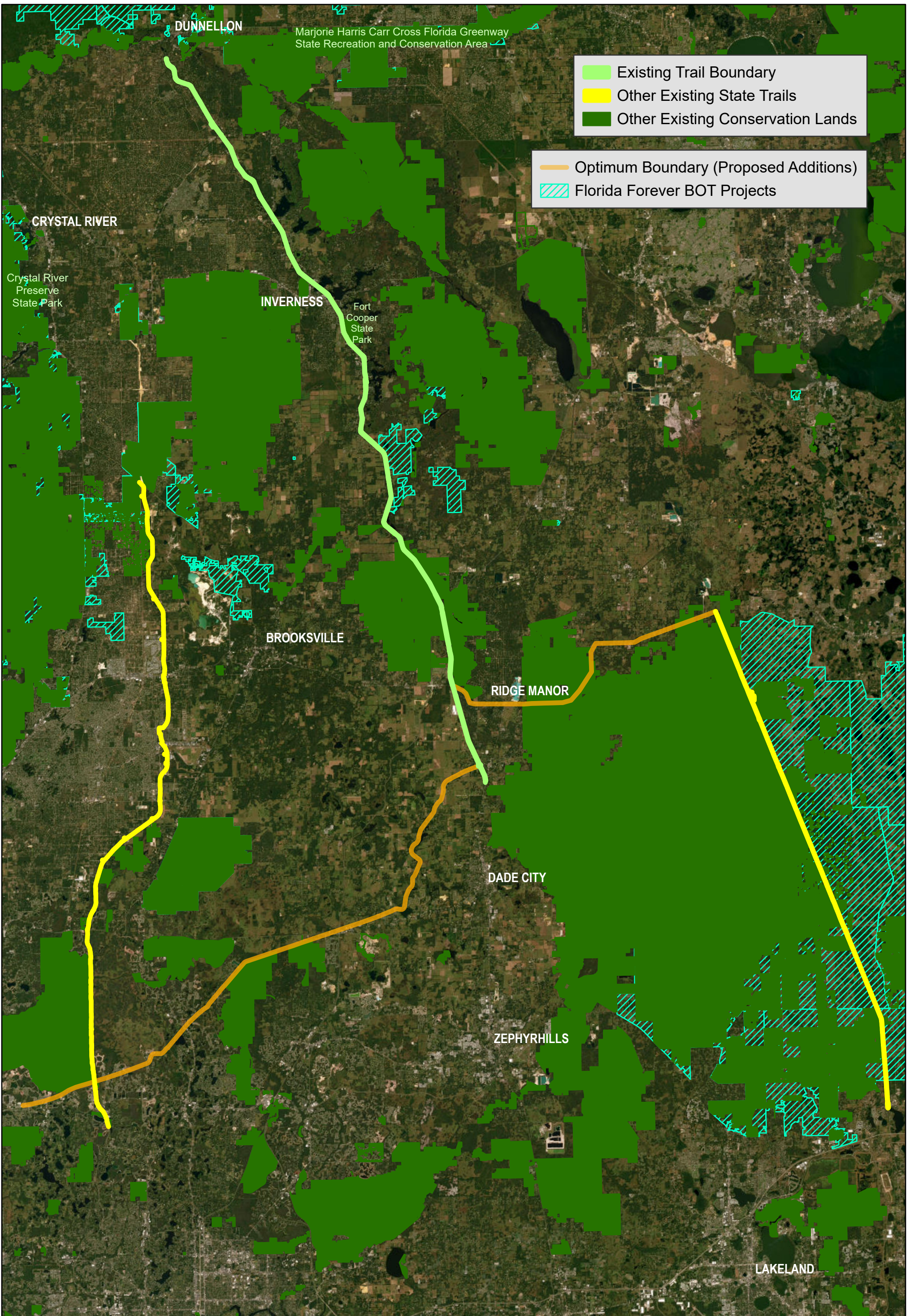
- 1** Gulf Junction Trailhead - Remove sidewalk and install a ramp compliant with the Americans with Disabilities Act (ADA). Restore inaccessible parking area.
- 2** South Citrus Trailhead - Relocate and permeably pave parking spaces. Install picnic pavilion and tables to replace parking spaces.
- 3** Inverness Trailhead - Construct a CSO visitor center and install a security gate to overflow parking area. Remove restroom and pave parking area. Replace shed and carports.
- 4** Trail-wide - Resurface the trail. Comply with the Manual on Uniform Traffic Control Devices. Install a 9-1-1 emergency system and implement a birdwatching tour. Provide sewer connections and more interpretation at all trailheads. Prevent unauthorized entry points along the trail.
- 5** Road Crossings - Consult with the Florida Department of Transportation and install pedestrian hybrid beacons.
- 6** Ridge Manor - Pave and organize parking area. Relocate restroom and install an ADA-compliant ramp. Consider replacing wooden fencing along bridge.
- 7** Trilby Trailhead - Remove and discontinue trailhead use. Revegetate road loop, secure from public access, install a permanent fence, and remove from informational resources.
- 8** Owensboro Junction Trailhead - Install a picnic pavilion. Permeably pave and organize parking spaces.



Withlacoochee State Trail

Conceptual Land Use Plan





Existing Trail Boundary
 Other Existing State Trails
 Other Existing Conservation Lands

Optimum Boundary (Proposed Additions)
 Florida Forever BOT Projects

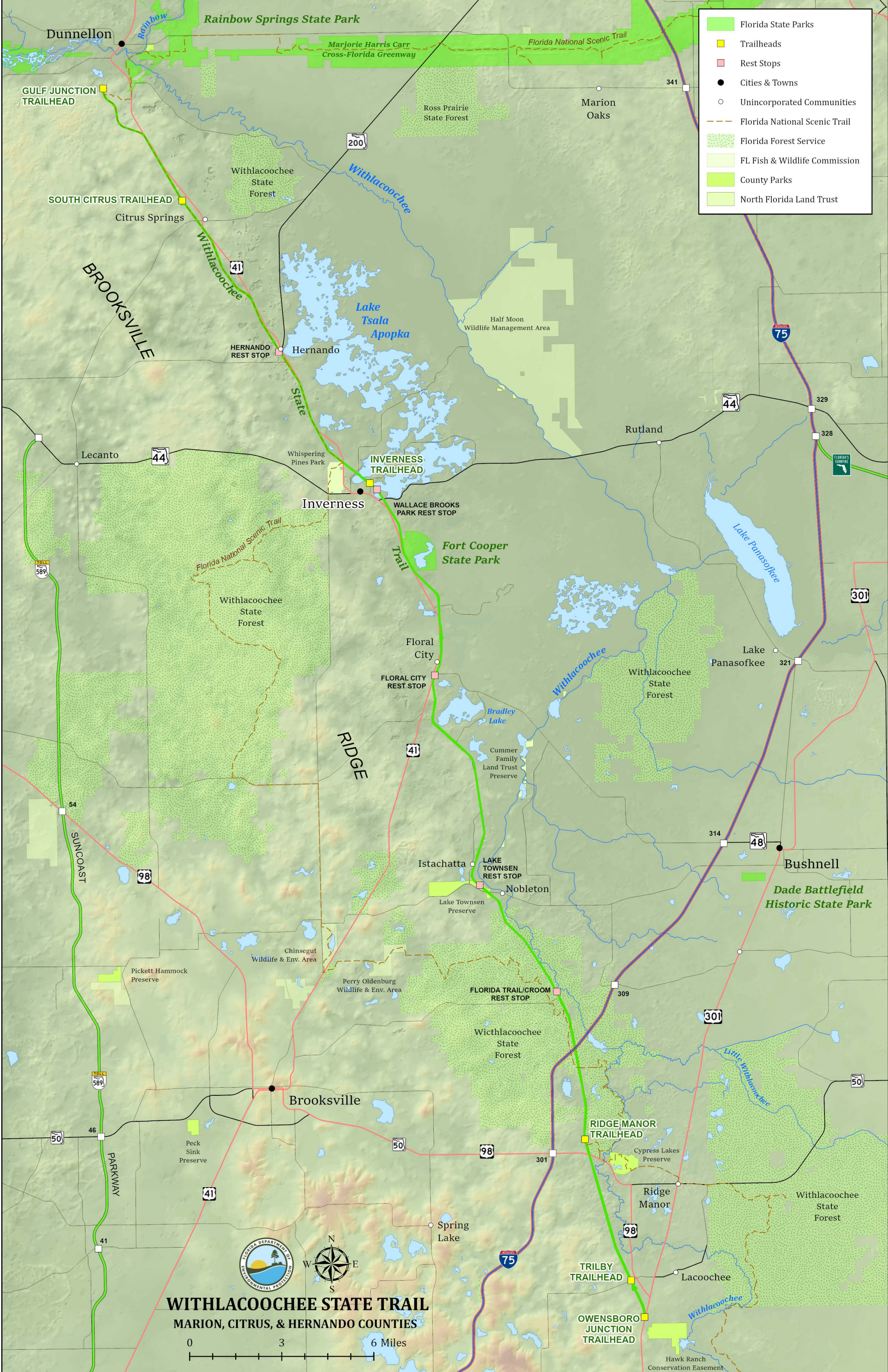


Withlacoochee State Trail

Optimum Boundary

0 3 6 Miles





- Florida State Parks
- Trailheads
- Rest Stops
- Cities & Towns
- Unincorporated Communities
- Florida National Scenic Trail
- Florida Forest Service
- FL Fish & Wildlife Commission
- County Parks
- North Florida Land Trust



WITHLACOOCHEE STATE TRAIL
MARION, CITRUS, & HERNANDO COUNTIES

0 3 6 Miles